

SILVA

DUBAI CREEK HARBOUR

APARTMENTS

FLOOR PLANS

EMAAR

SILVA

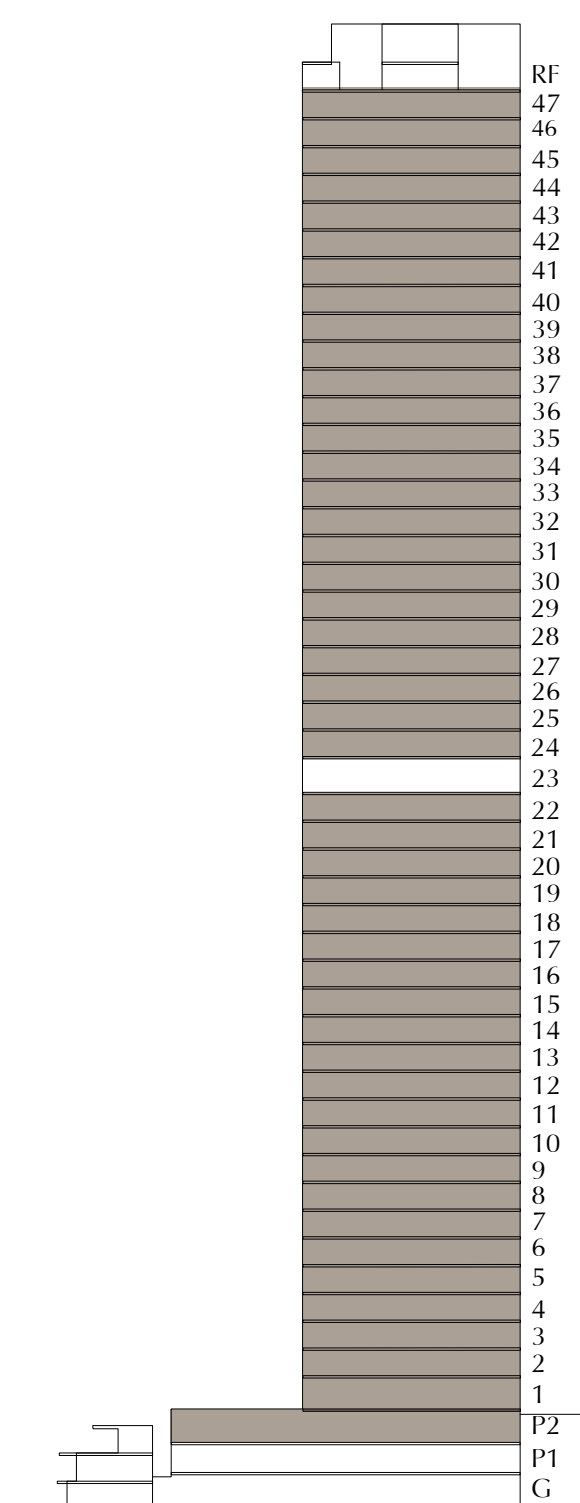
DUBAI CREEK HARBOUR

1 BEDROOM-TYPE 1A

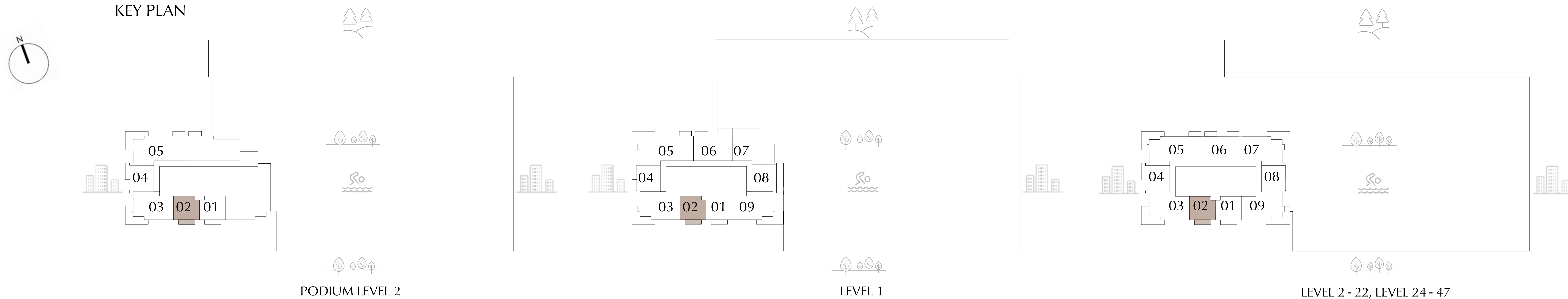
UNIT P202, 102, 202 - 2202, 2402 - 4702

SUITE AREA	655.74	SQ.FT.	60.92	SQ.M.
BALCONY AREA	87.83	SQ.FT.	8.16	SQ.M.
TOTAL AREA	743.57	SQ.FT.	69.08	SQ.M.

KEY SECTION



KEY PLAN



FLOOR PLAN 1. All dimensions are in imperial and metric, and measured from finish to finish excluding construction tolerances. 2. All materials, dimensions, and drawings are approximate only. 3. Information is subject to change without notice, at developer's absolute discretion. 4. Actual area may vary from the stated area. 5. Drawings not to scale. 6. All images used are for illustrative purposes only and do not represent the actual size, features, specifications, fittings, and furnishings. 7. The developer reserves the right to make revisions / alterations, at it's absolute discretion, without any liability whatsoever.

SILVA

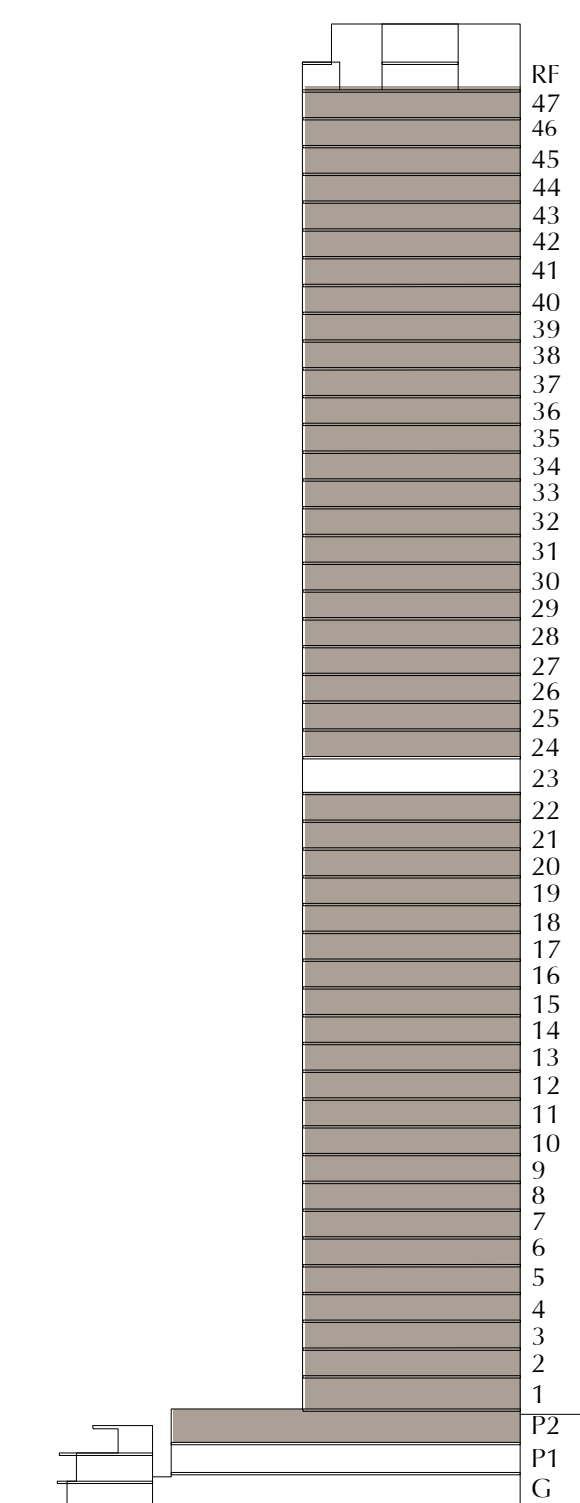
DUBAI CREEK HARBOUR

1 BEDROOM-TYPE 1B

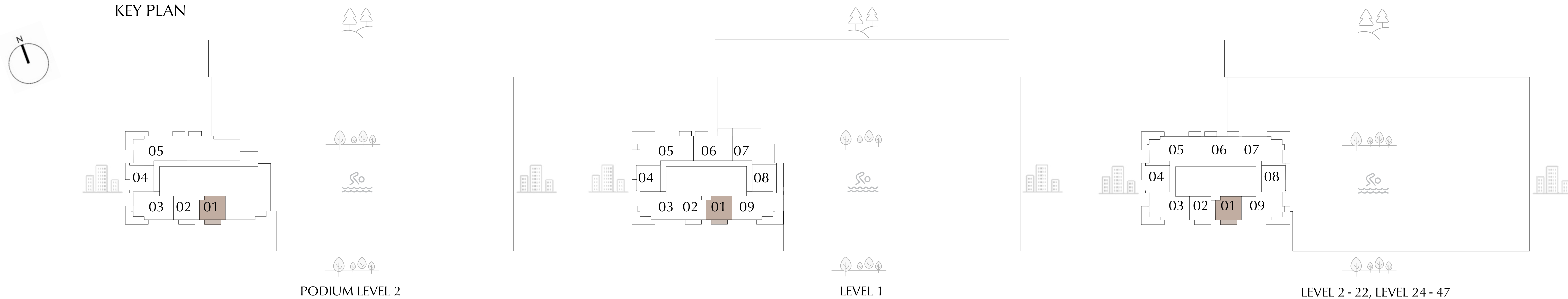
UNIT P201, 101, 201 - 2201, 2401 - 4701

SUITE AREA	655.74	SQ.FT.	60.92	SQ.M.
BALCONY AREA	87.83	SQ.FT.	8.16	SQ.M.
TOTAL AREA	743.57	SQ.FT.	69.08	SQ.M.

KEY SECTION



KEY PLAN



FLOOR PLAN 1. All dimensions are in imperial and metric, and measured from finish to finish excluding construction tolerances. 2. All materials, dimensions, and drawings are approximate only. 3. Information is subject to change without notice, at developer's absolute discretion. 4. Actual area may vary from the stated area. 5. Drawings not to scale. 6. All images used are for illustrative purposes only and do not represent the actual size, features, specifications, fittings, and furnishings. 7. The developer reserves the right to make revisions / alterations, at it's absolute discretion, without any liability whatsoever.

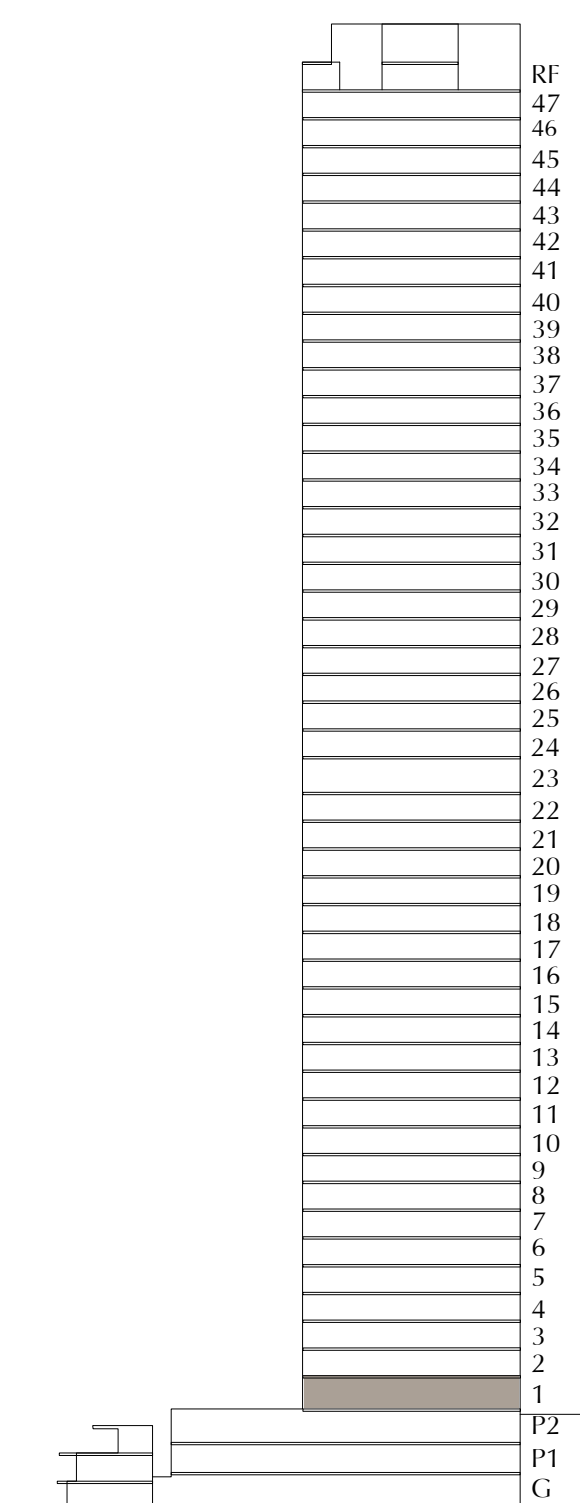
SILVA

DUBAI CREEK HARBOUR

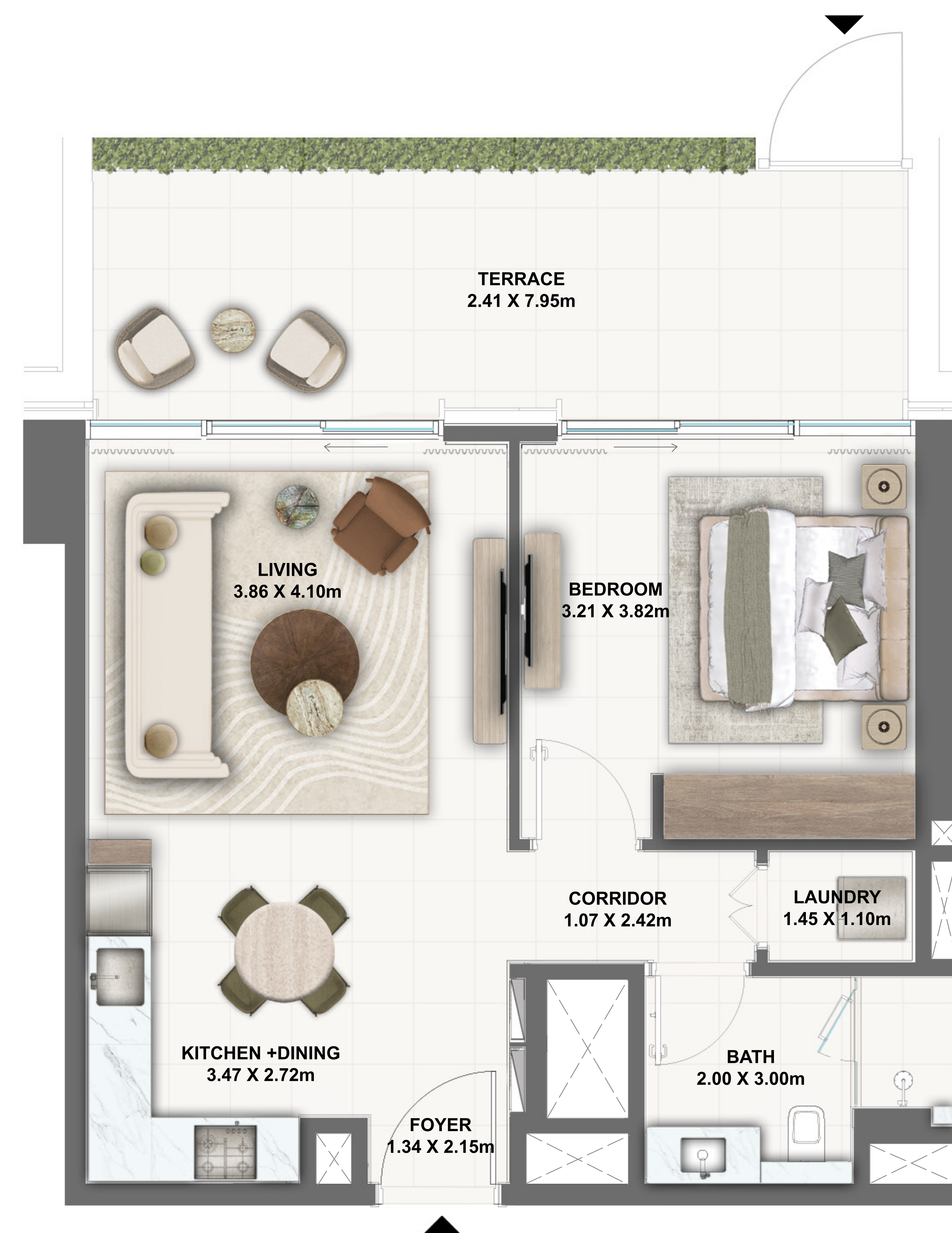
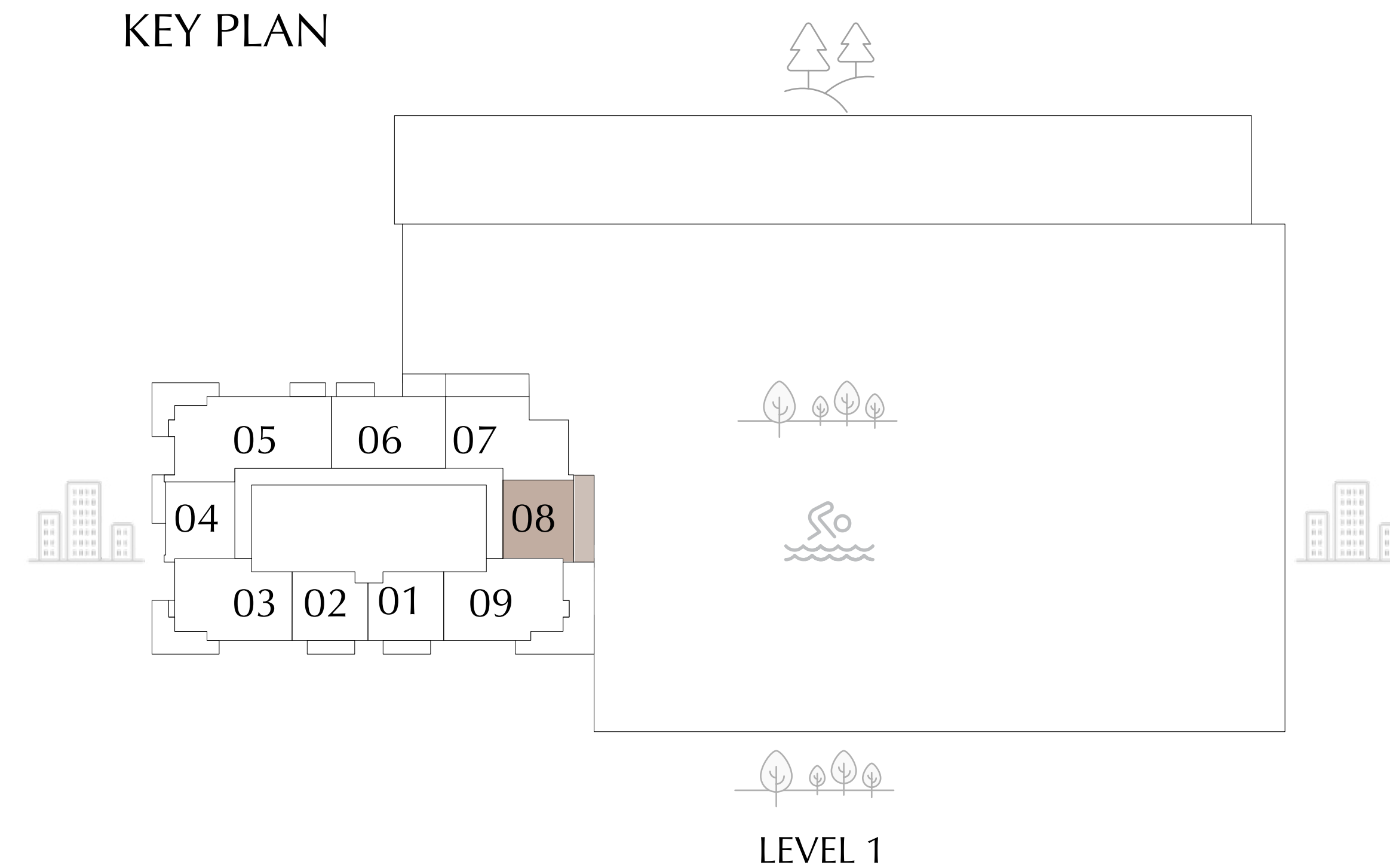
1 BEDROOM-TYPE 2A UNIT 108

SUITE AREA	664.56 SQ.FT.	61.74 SQ.M.
TERRACE AREA	212.80 SQ.FT.	19.77 SQ.M.
TOTAL AREA	877.36 SQ.FT.	81.51 SQ.M.

KEY SECTION



KEY PLAN



FLOOR PLAN 1. All dimensions are in imperial and metric, and measured from finish to finish excluding construction tolerances. 2. All materials, dimensions, and drawings are approximate only. 3. Information is subject to change without notice, at developer's absolute discretion. 4. Actual area may vary from the stated area. 5. Drawings not to scale. 6. All images used are for illustrative purposes only and do not represent the actual size, features, specifications, fittings, and furnishings. 7. The developer reserves the right to make revisions / alterations, at it's absolute discretion, without any liability whatsoever.

SILVA

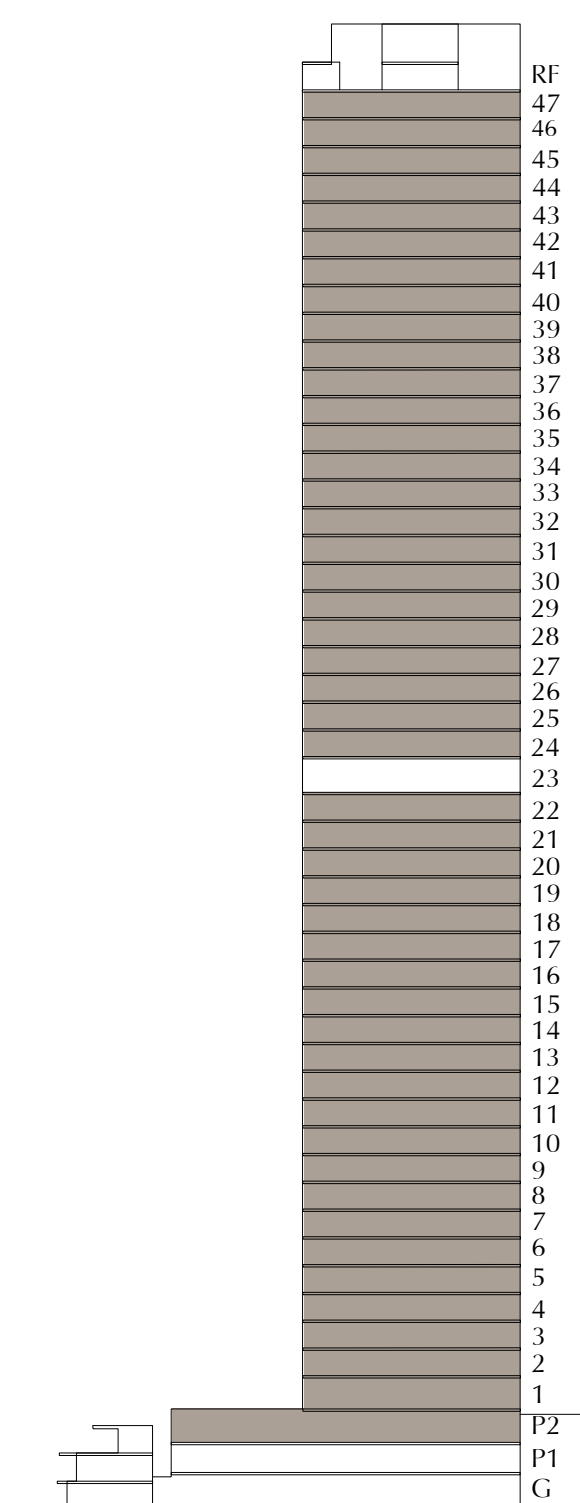
DUBAI CREEK HARBOUR

1 BEDROOM-TYPE 2B

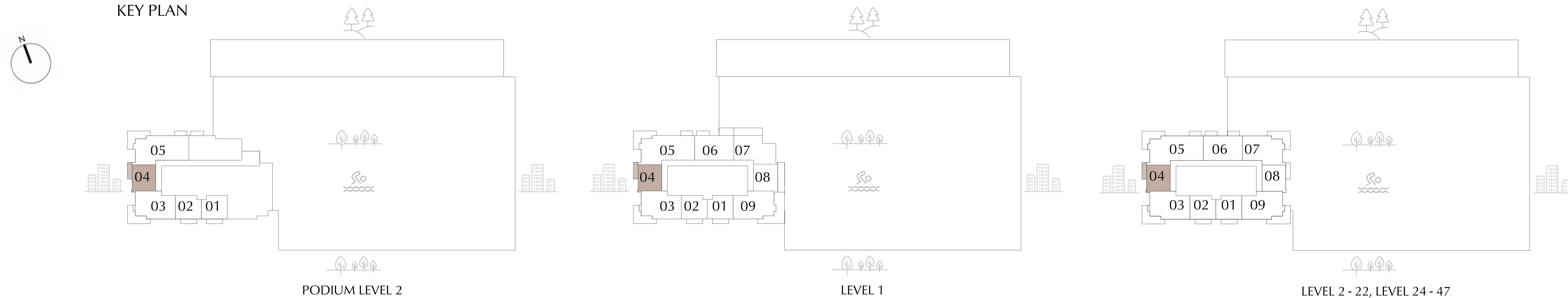
UNIT P204, 104, 204 - 2204, 2404 - 4704

SUITE AREA	664.24	SQ.FT.	61.71	SQ.M.
BALCONY AREA	91.06	SQ.FT.	8.46	SQ.M.
TOTAL AREA	755.30	SQ.FT.	70.17	SQ.M.

KEY SECTION



KEY PLAN



FLOOR PLAN 1. All dimensions are in imperial and metric, and measured from finish to finish excluding construction tolerances. 2. All materials, dimensions, and drawings are approximate only. 3. Information is subject to change without notice, at developer's absolute discretion. 4. Actual area may vary from the stated area. 5. Drawings not to scale. 6. All images used are for illustrative purposes only and do not represent the actual size, features, specifications, fittings, and furnishings. 7. The developer reserves the right to make revisions / alterations, at it's absolute discretion, without any liability whatsoever.

SILVA

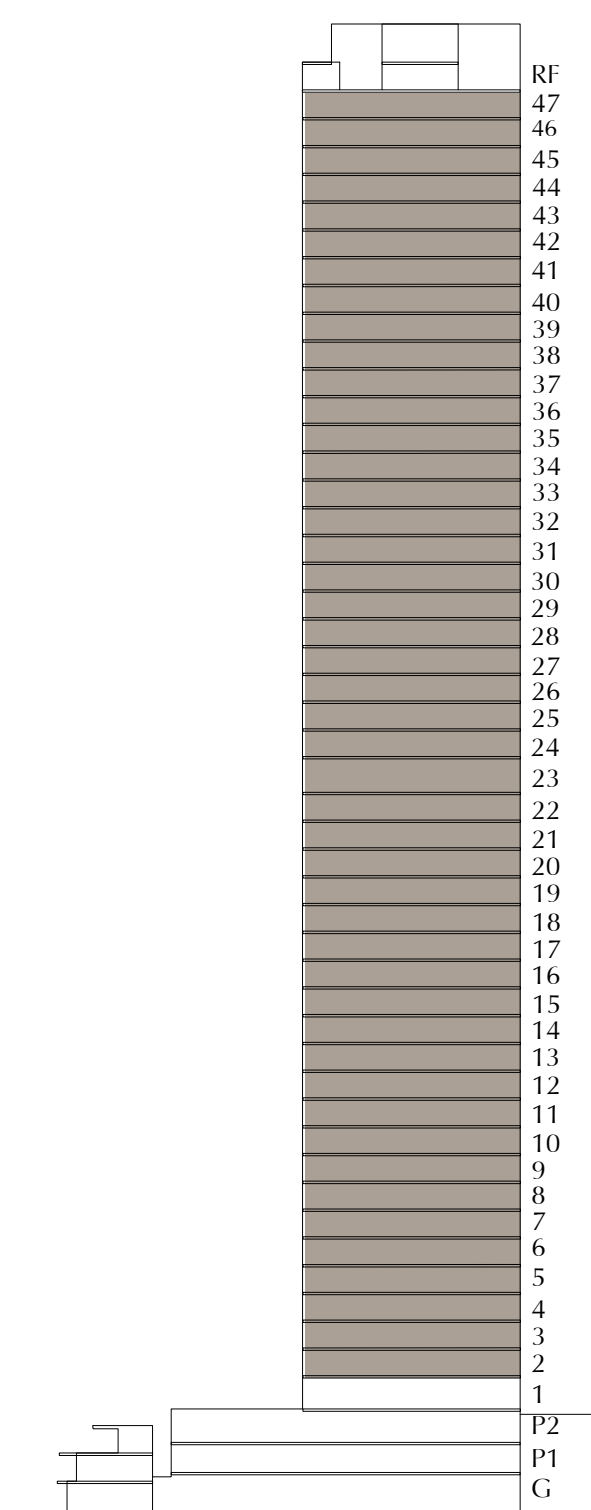
DUBAI CREEK HARBOUR

1 BEDROOM-TYPE 2C

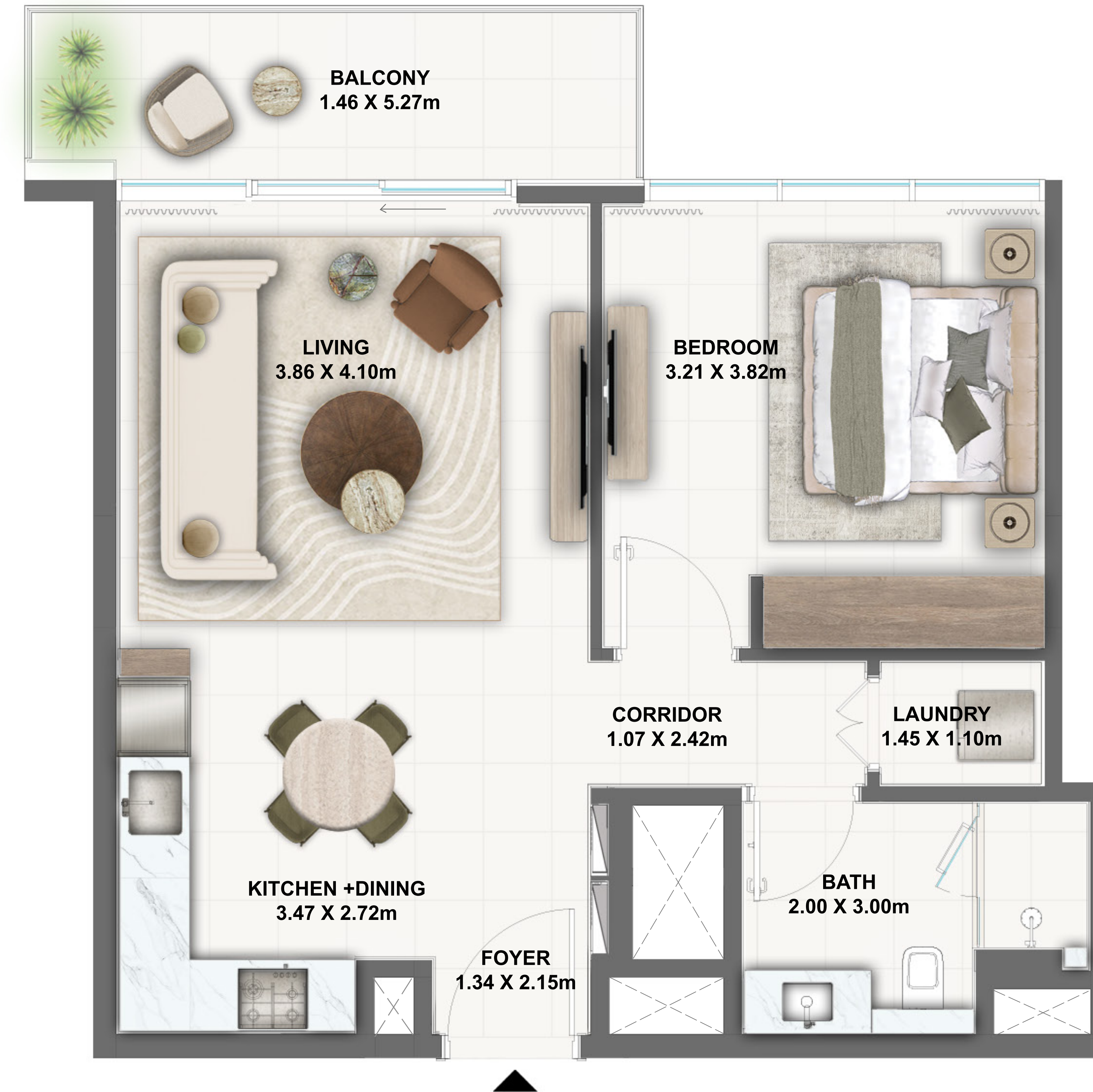
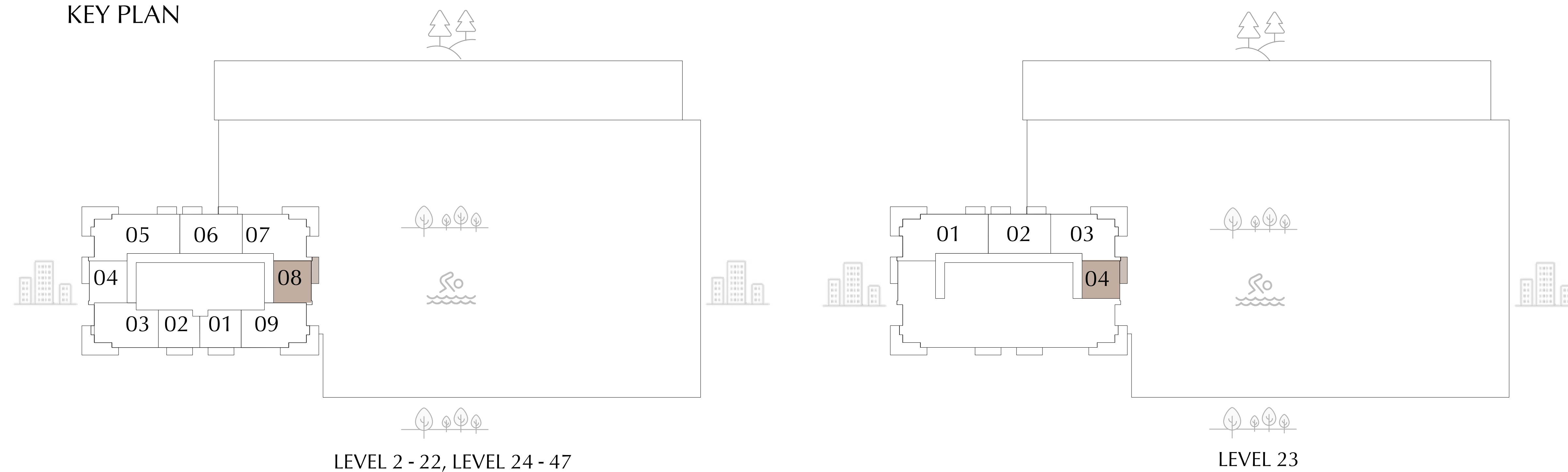
UNIT 208 - 2208, 2304, 2408 - 4708

SUITE AREA	664.24	SQ.FT.	61.71	SQ.M.
BALCONY AREA	82.24	SQ.FT.	7.64	SQ.M.
TOTAL AREA	746.48	SQ.FT.	69.35	SQ.M.

KEY SECTION



KEY PLAN



FLOOR PLAN 1. All dimensions are in imperial and metric, and measured from finish to finish excluding construction tolerances. 2. All materials, dimensions, and drawings are approximate only. 3. Information is subject to change without notice, at developer's absolute discretion. 4. Actual area may vary from the stated area. 5. Drawings not to scale. 6. All images used are for illustrative purposes only and do not represent the actual size, features, specifications, fittings, and furnishings. 7. The developer reserves the right to make revisions / alterations, at it's absolute discretion, without any liability whatsoever.

SILVA

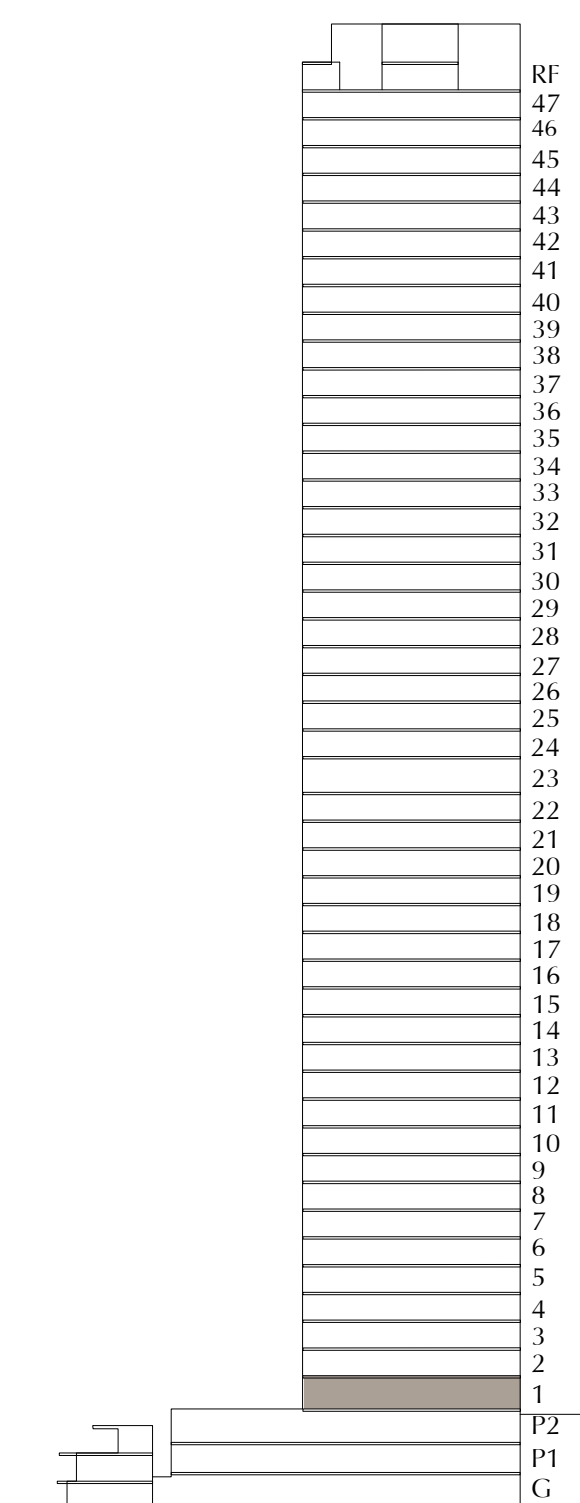
DUBAI CREEK HARBOUR

1 BEDROOM-TYPE 3

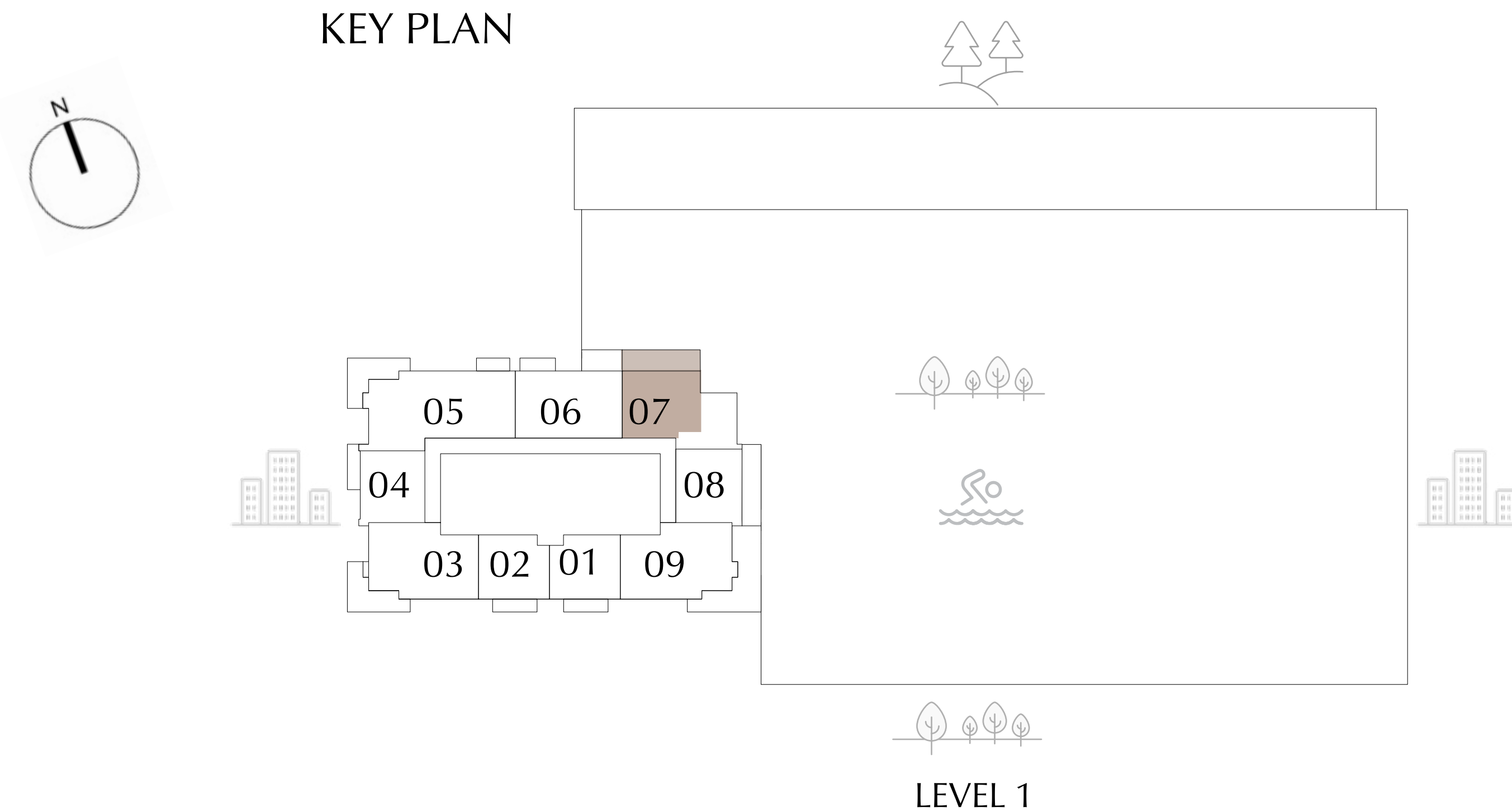
UNIT 107

SUITE AREA	715.15	SQ.FT.	66.44	SQ.M.
TERRACE AREA	256.50	SQ.FT.	23.83	SQ.M.
TOTAL AREA	971.65	SQ.FT.	90.27	SQ.M.

KEY SECTION



KEY PLAN



FLOOR PLAN 1. All dimensions are in imperial and metric, and measured from finish to finish excluding construction tolerances. 2. All materials, dimensions, and drawings are approximate only. 3. Information is subject to change without notice, at developer's absolute discretion. 4. Actual area may vary from the stated area. 5. Drawings not to scale. 6. All images used are for illustrative purposes only and do not represent the actual size, features, specifications, fittings, and furnishings. 7. The developer reserves the right to make revisions / alterations, at it's absolute discretion, without any liability whatsoever.

EMAAR

SILVA

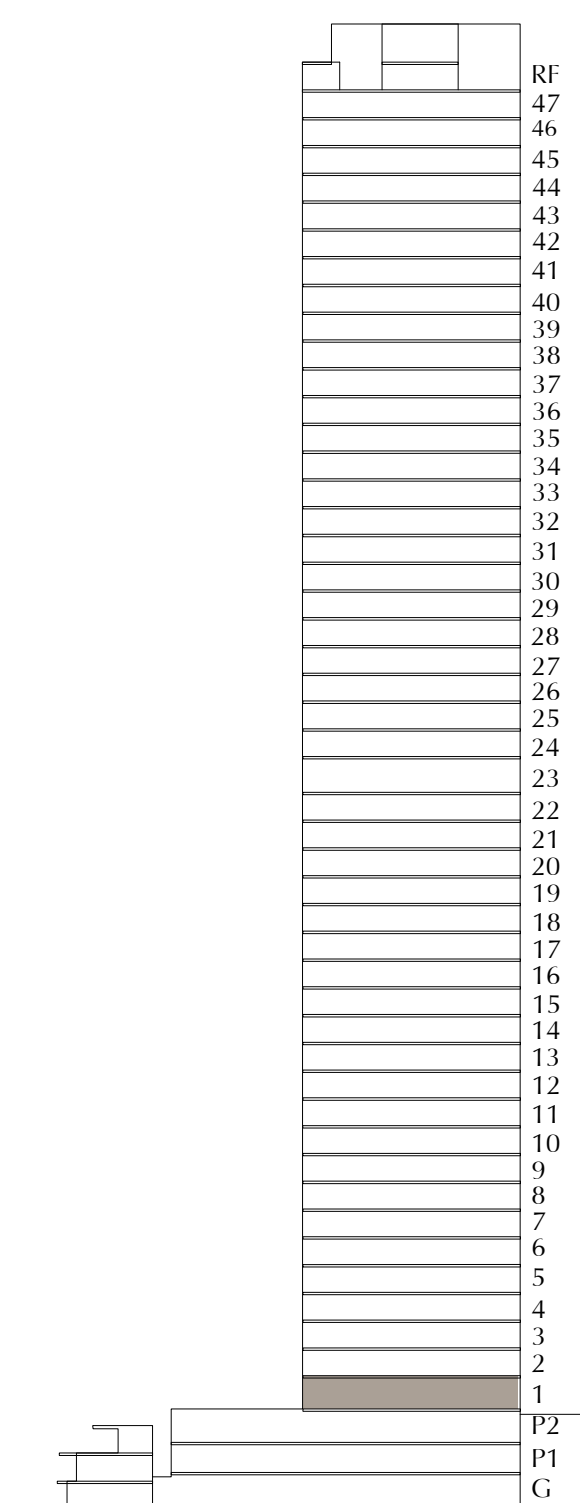
DUBAI CREEK HARBOUR

2 BEDROOM-TYPE 1A

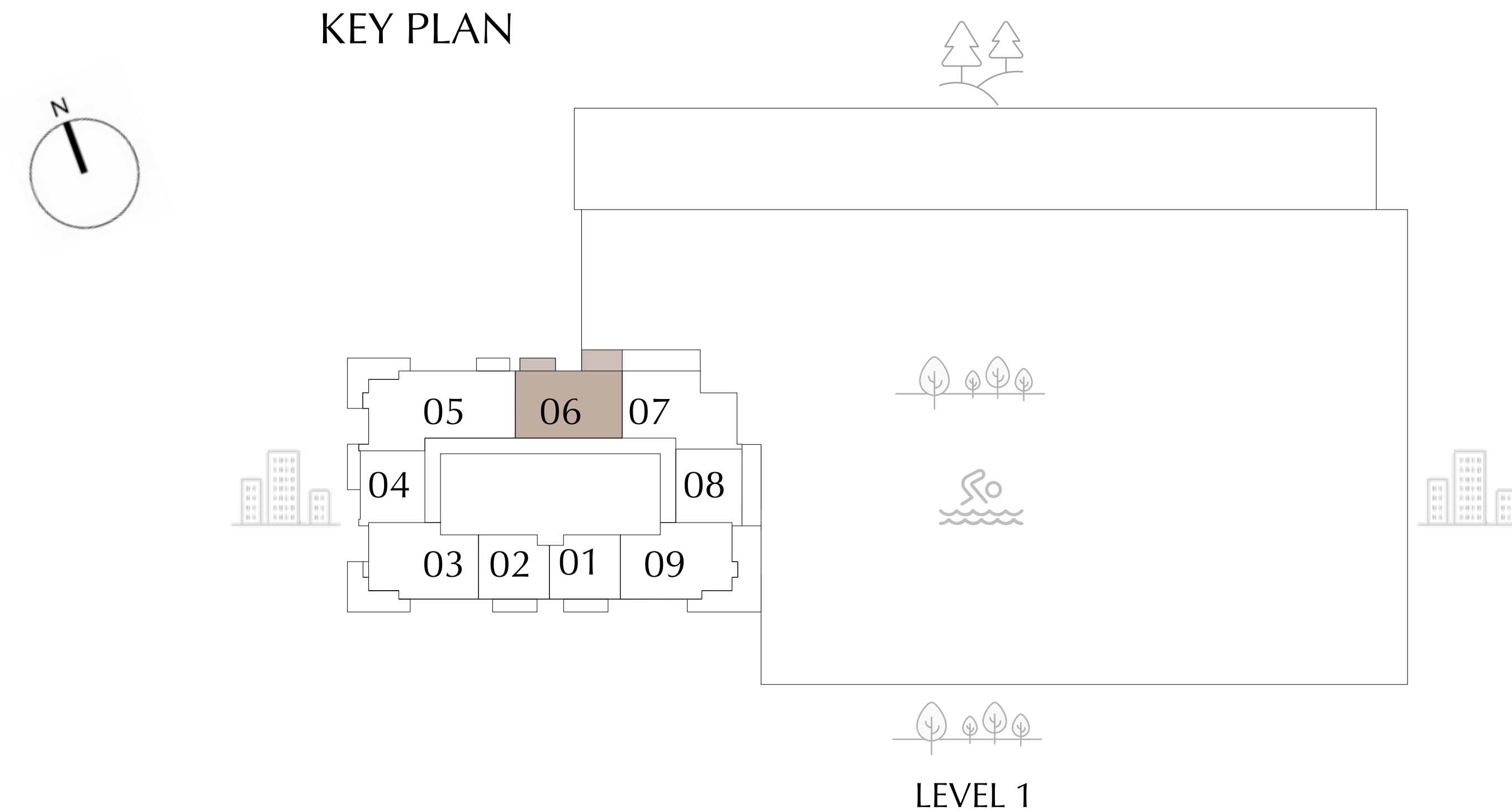
UNIT 106

SUITE AREA	1014.71	SQ.FT.	94.27	SQ.M.
TERRACE/BALCONY AREA	184.71	SQ.FT.	17.16	SQ.M.
TOTAL AREA	1199.42	SQ.FT.	111.43	SQ.M.

KEY SECTION



KEY PLAN



FLOOR PLAN 1. All dimensions are in imperial and metric, and measured from finish to finish excluding construction tolerances. 2. All materials, dimensions, and drawings are approximate only. 3. Information is subject to change without notice, at developer's absolute discretion. 4. Actual area may vary from the stated area. 5. Drawings not to scale. 6. All images used are for illustrative purposes only and do not represent the actual size, features, specifications, fittings, and furnishings. 7. The developer reserves the right to make revisions / alterations, at it's absolute discretion, without any liability whatsoever.

SILVA

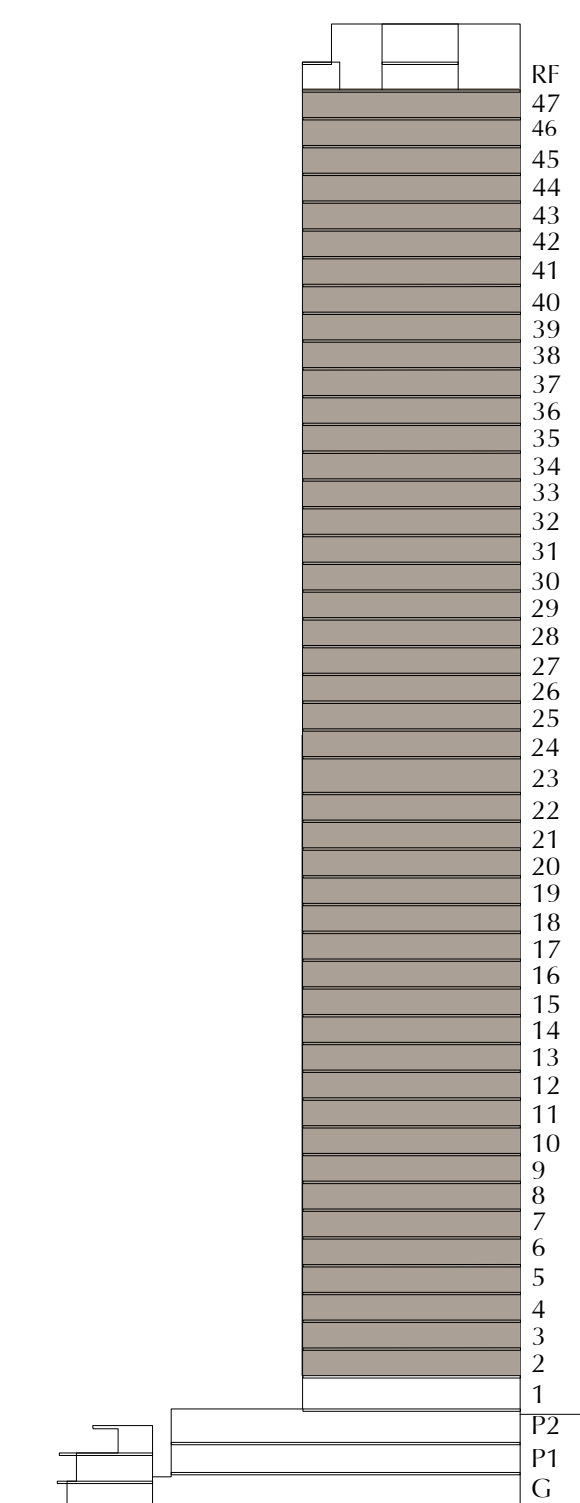
DUBAI CREEK HARBOUR

2 BEDROOM-TYPE 1B

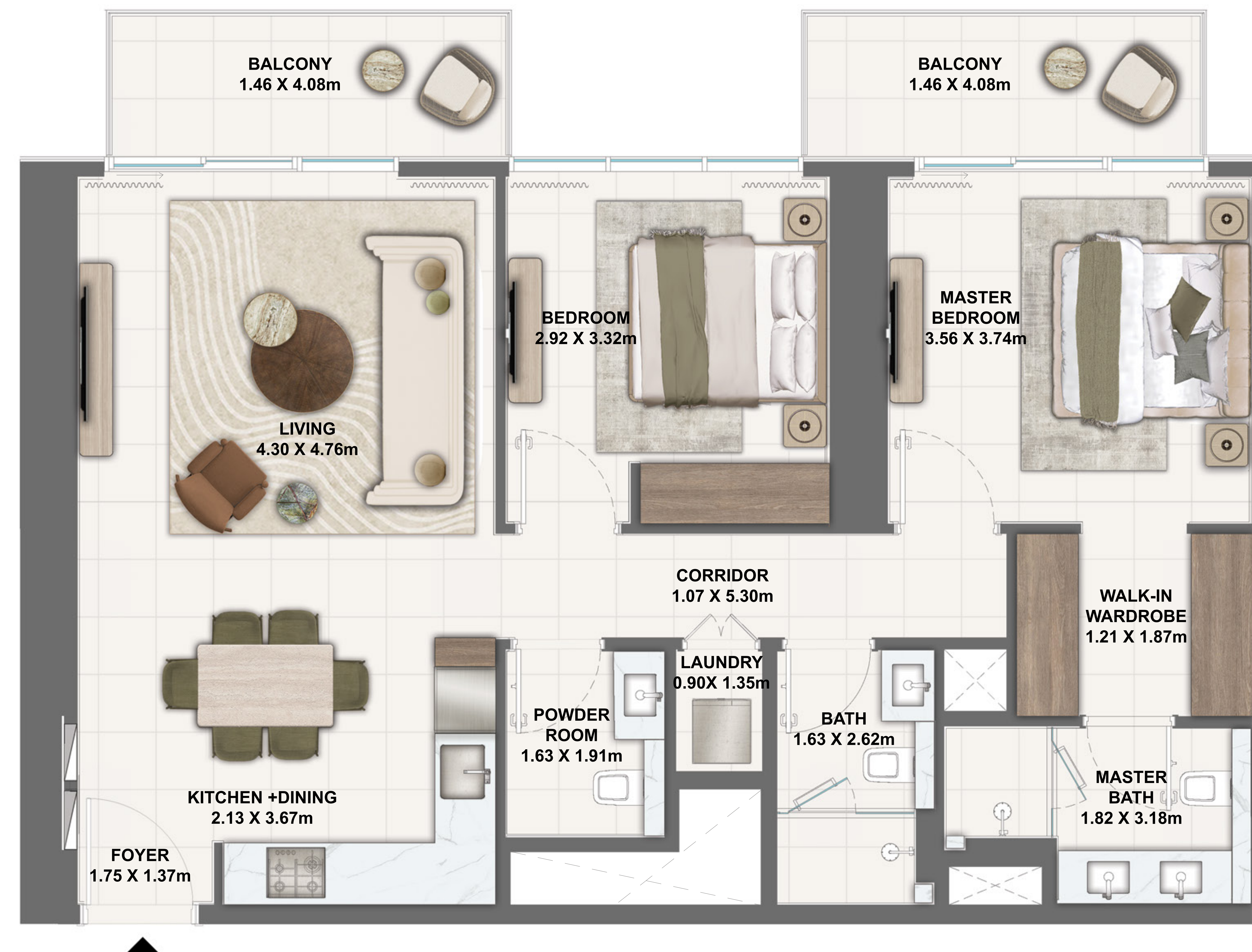
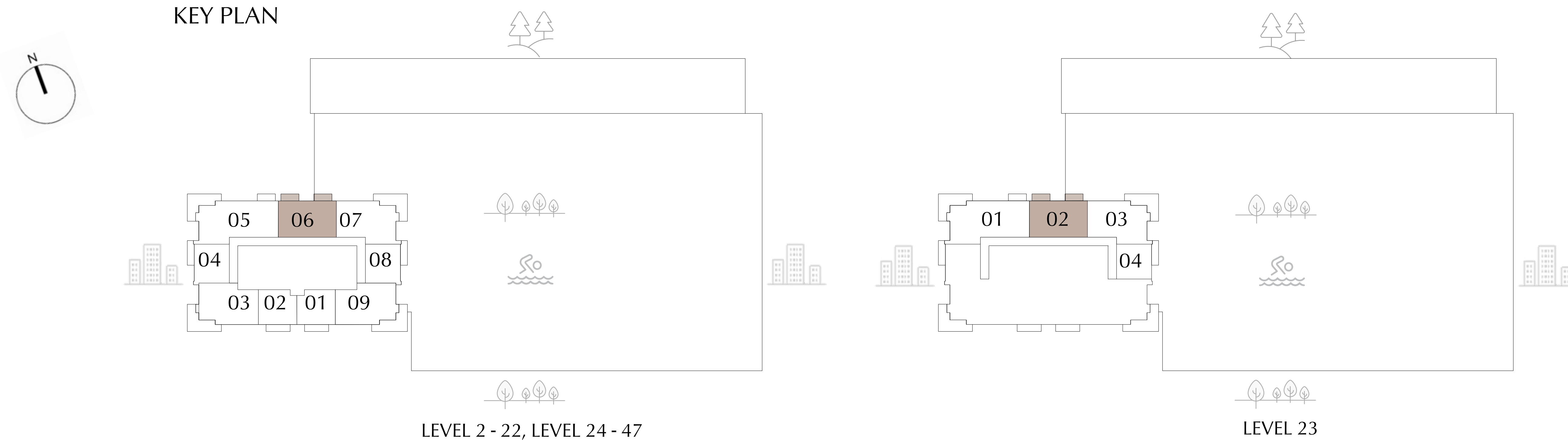
UNIT 206 - 2206, 2302, 2406 - 4706

SUITE AREA	1013.21	SQ.FT.	94.13	SQ.M.
BALCONY AREA	141.22	SQ.FT.	13.12	SQ.M.
TOTAL AREA	1154.43	SQ.FT.	107.25	SQ.M.

KEY SECTION



KEY PLAN



FLOOR PLAN 1. All dimensions are in imperial and metric, and measured from finish to finish excluding construction tolerances. 2. All materials, dimensions, and drawings are approximate only. 3. Information is subject to change without notice, at developer's absolute discretion. 4. Actual area may vary from the stated area. 5. Drawings not to scale. 6. All images used are for illustrative purposes only and do not represent the actual size, features, specifications, fittings, and furnishings. 7. The developer reserves the right to make revisions / alterations, at it's absolute discretion, without any liability whatsoever.

SILVA

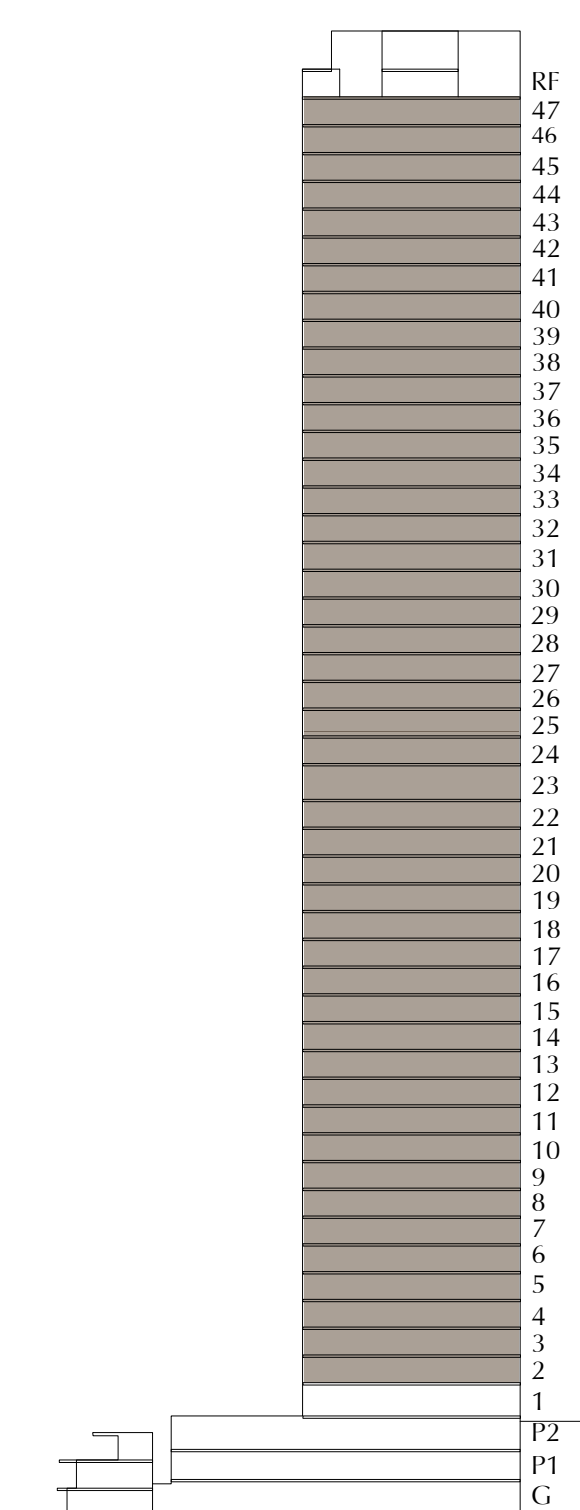
DUBAI CREEK HARBOUR

2 BEDROOM-TYPE 2

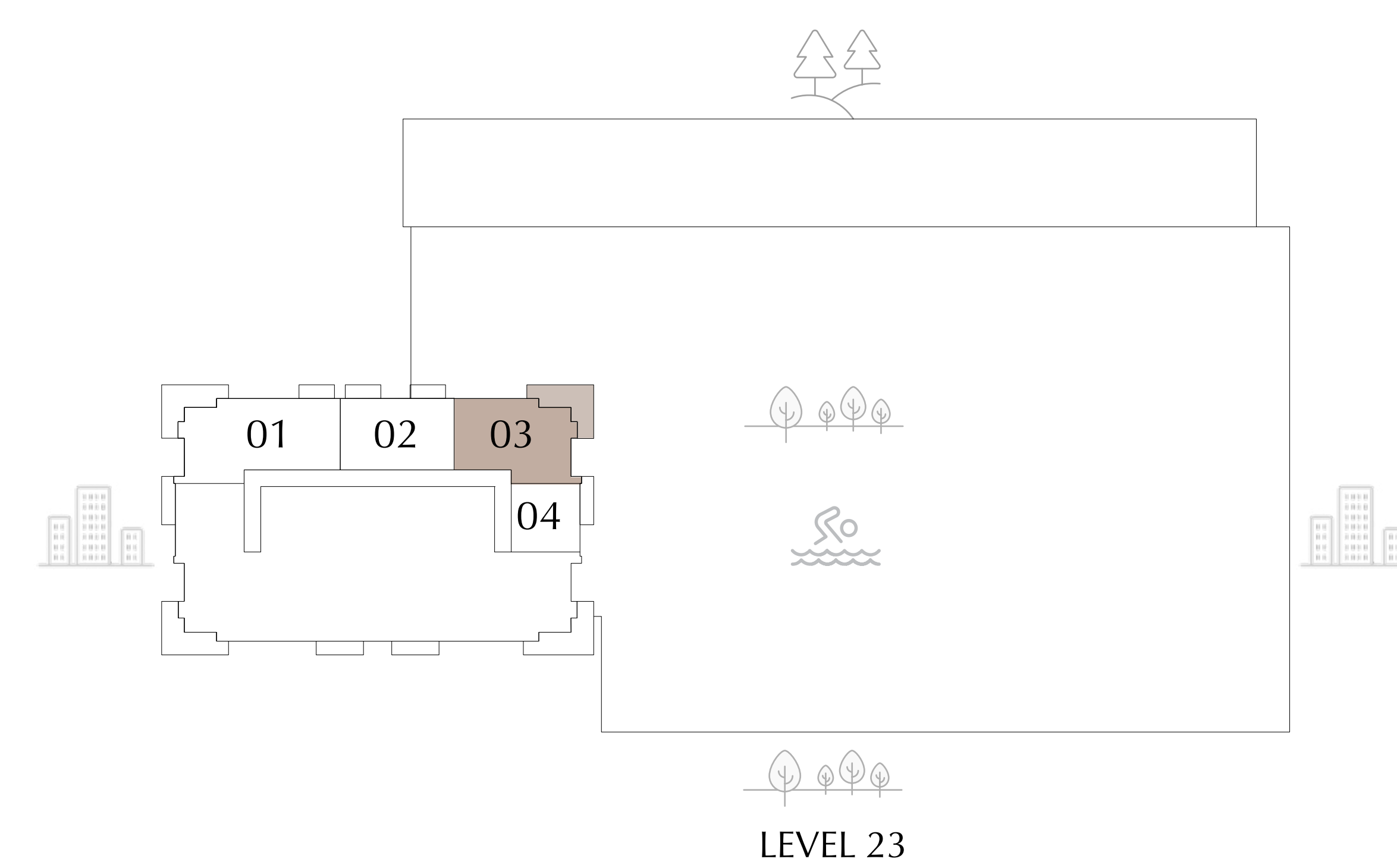
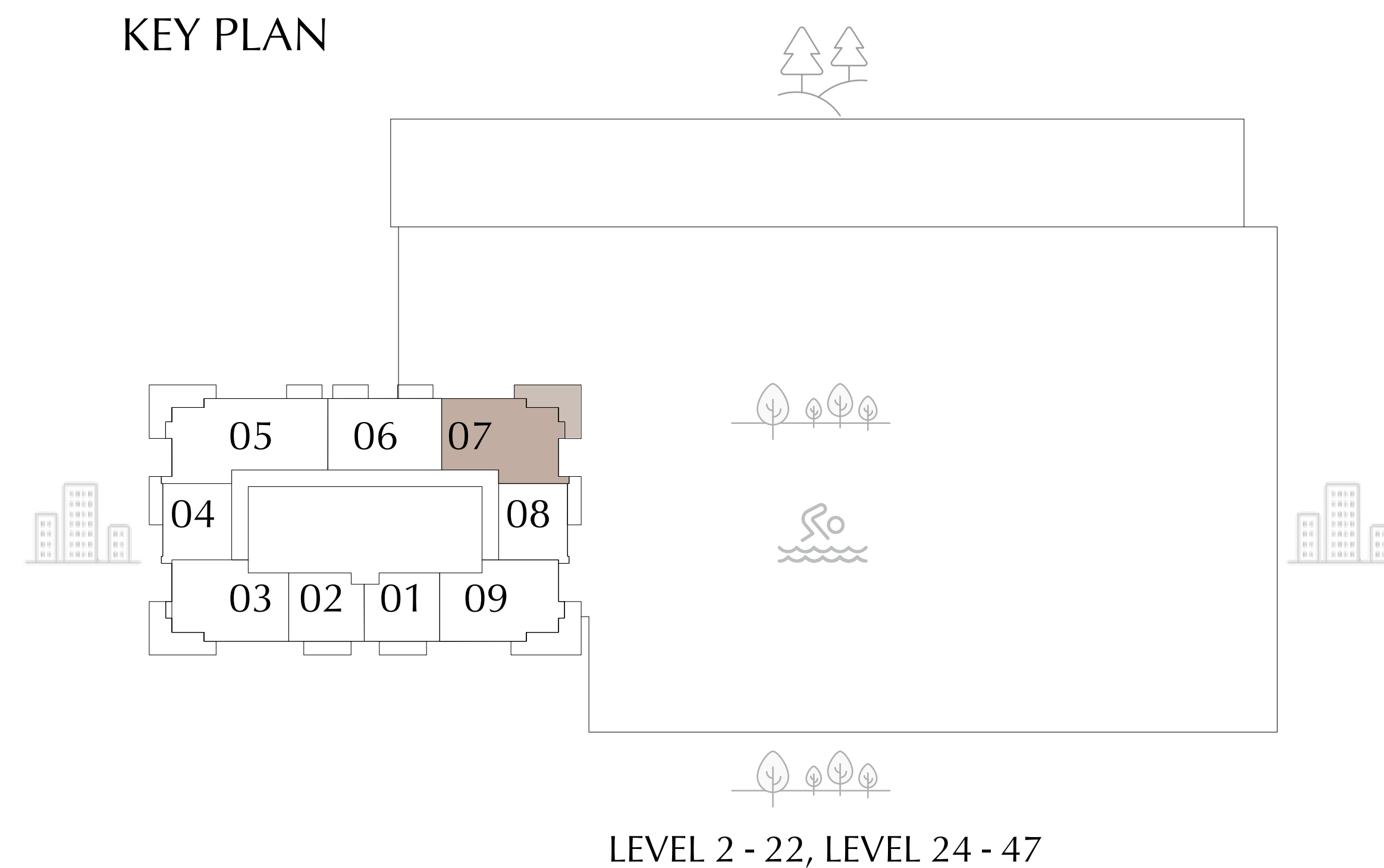
UNIT 207 - 2207, 2303, 2407 - 4707

SUITE AREA	1115.25 SQ.FT.	103.61 SQ.M.
BALCONY AREA	287.72 SQ.FT.	26.73 SQ.M.
TOTAL AREA	1402.97 SQ.FT.	130.34 SQ.M.

KEY SECTION



KEY PLAN



FLOOR PLAN 1. All dimensions are in imperial and metric, and measured from finish to finish excluding construction tolerances. 2. All materials, dimensions, and drawings are approximate only. 3. Information is subject to change without notice, at developer's absolute discretion. 4. Actual area may vary from the stated area. 5. Drawings not to scale. 6. All images used are for illustrative purposes only and do not represent the actual size, features, specifications, fittings, and furnishings. 7. The developer reserves the right to make revisions / alterations, at it's absolute discretion, without any liability whatsoever.

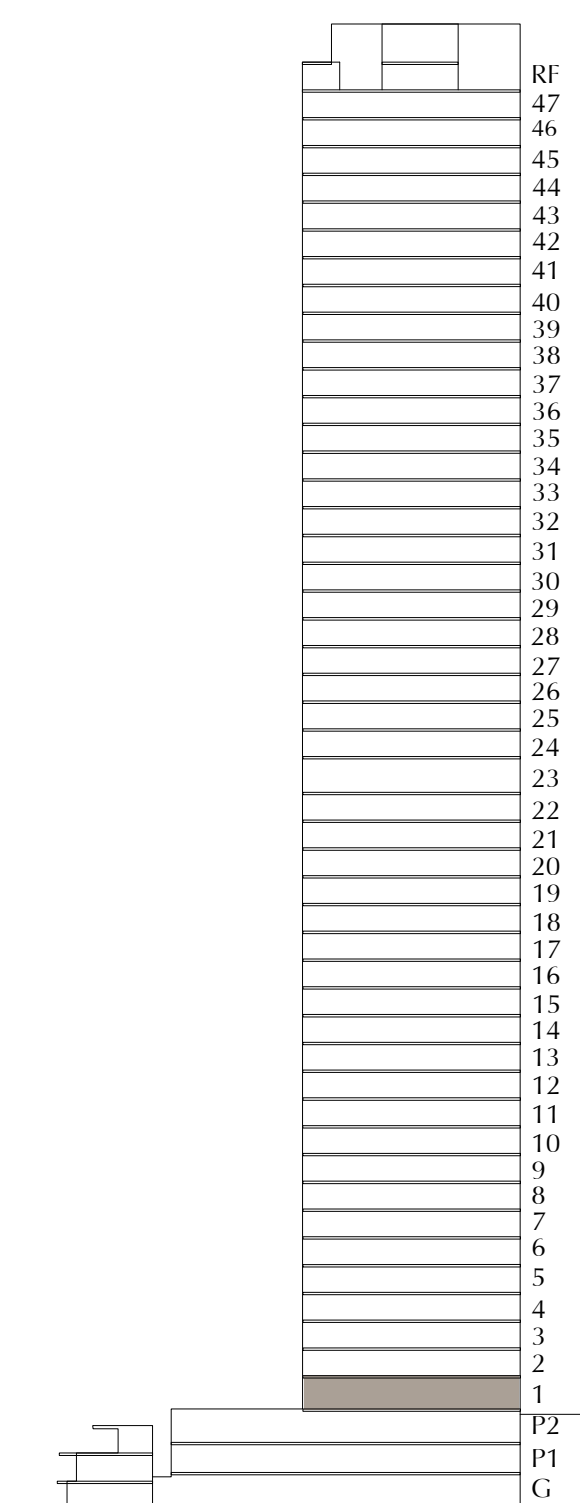
SILVA

DUBAI CREEK HARBOUR

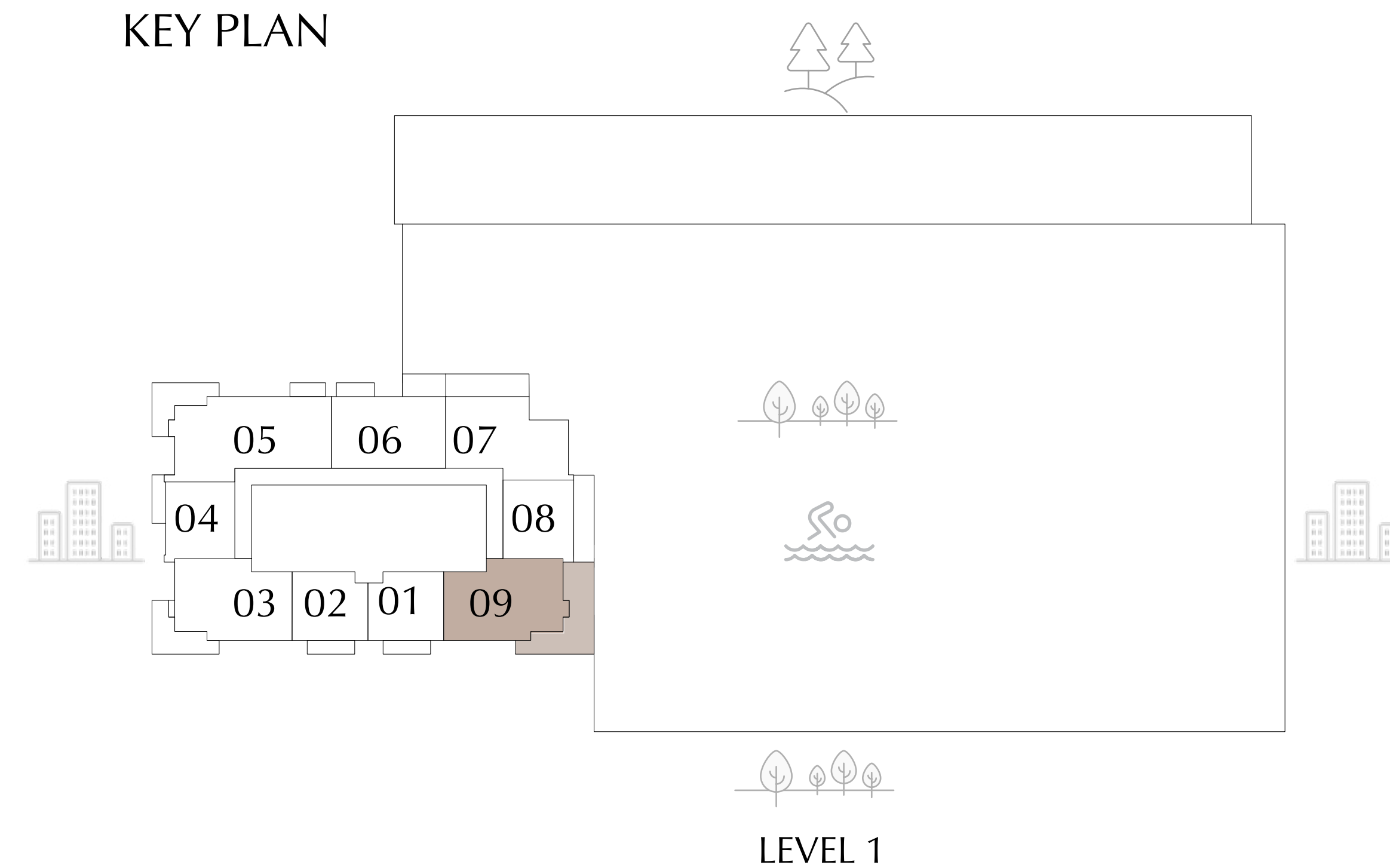
2 BEDROOM-TYPE 3A UNIT 109

SUITE AREA	1137.10 SQ.FT.	105.64 SQ.M.
TERRACE AREA	513.12 SQ.FT.	47.67 SQ.M.
TOTAL AREA	1650.22 SQ.FT.	153.31 SQ.M.

KEY SECTION



KEY PLAN



FLOOR PLAN 1. All dimensions are in imperial and metric, and measured from finish to finish excluding construction tolerances. 2. All materials, dimensions, and drawings are approximate only. 3. Information is subject to change without notice, at developer's absolute discretion. 4. Actual area may vary from the stated area. 5. Drawings not to scale. 6. All images used are for illustrative purposes only and do not represent the actual size, features, specifications, fittings, and furnishings. 7. The developer reserves the right to make revisions / alterations, at it's absolute discretion, without any liability whatsoever.

EMAAR

SILVA

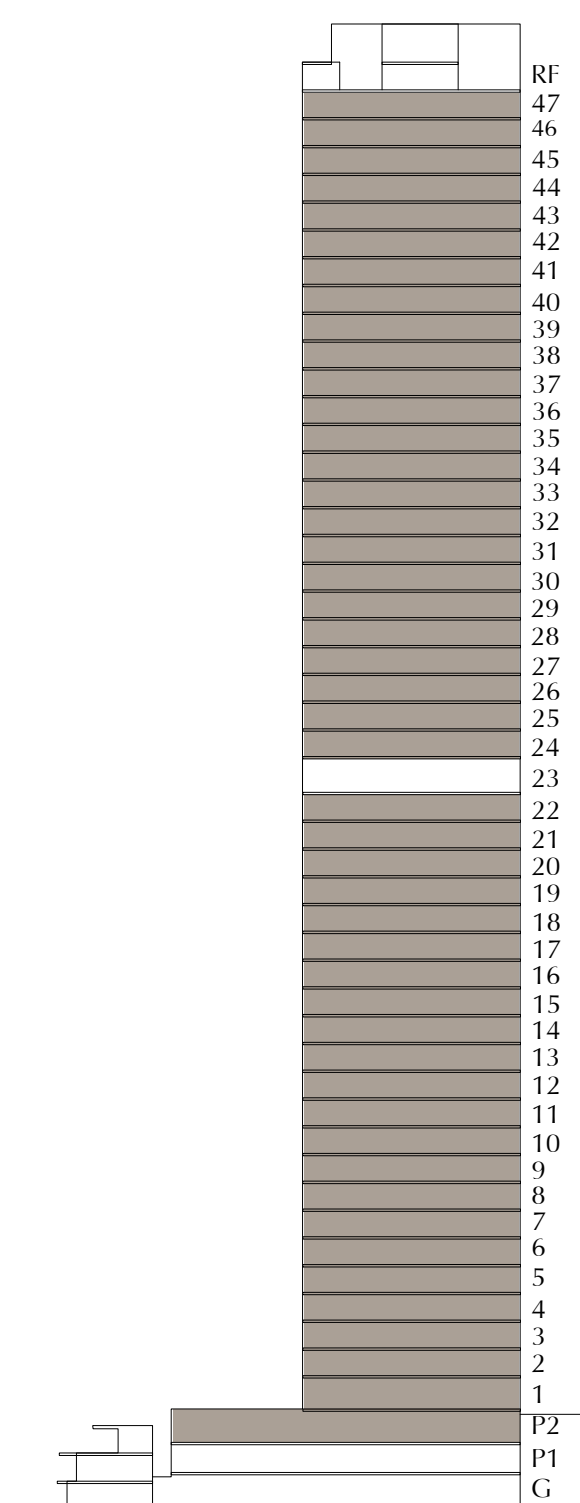
DUBAI CREEK HARBOUR

2 BEDROOM-TYPE 3B

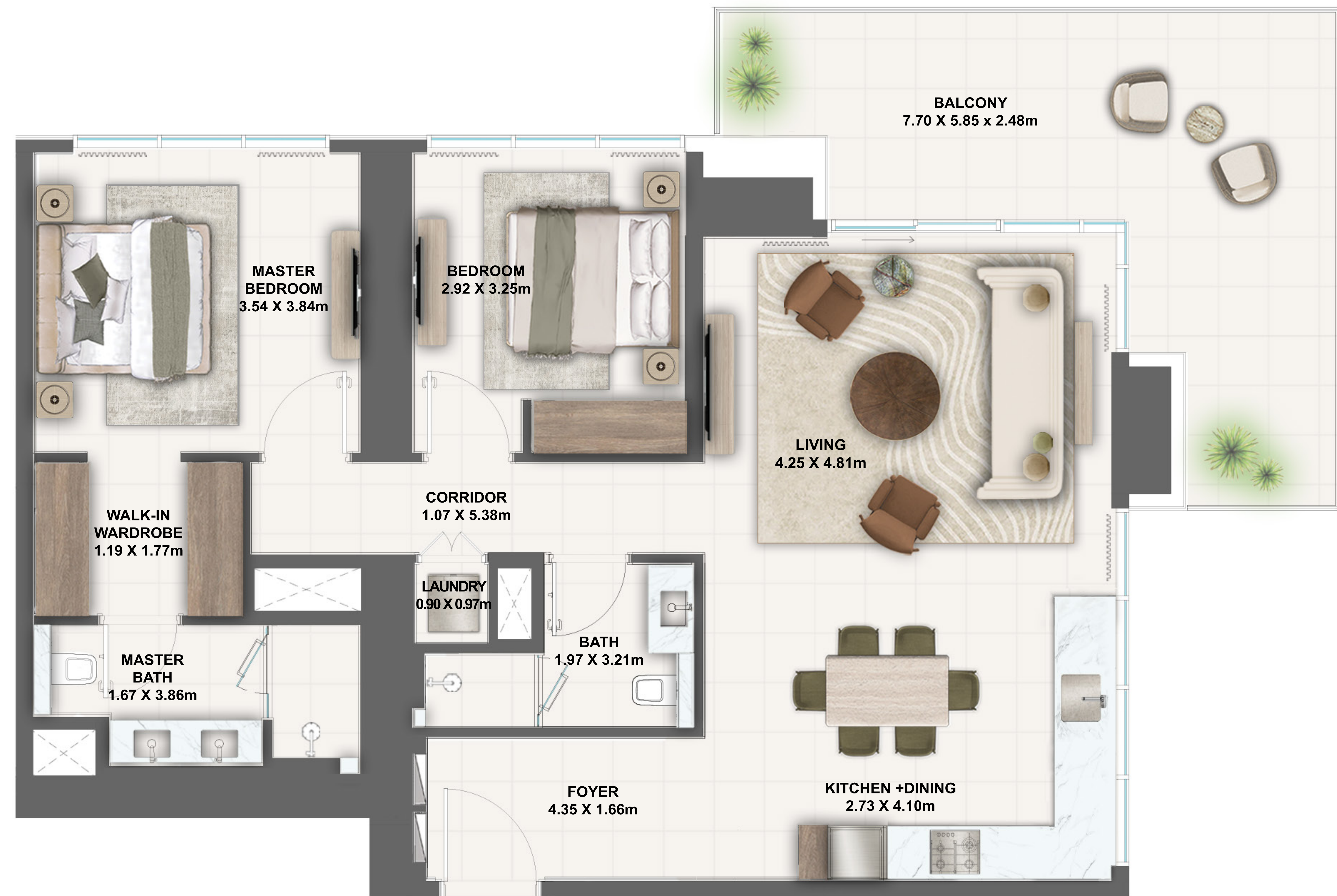
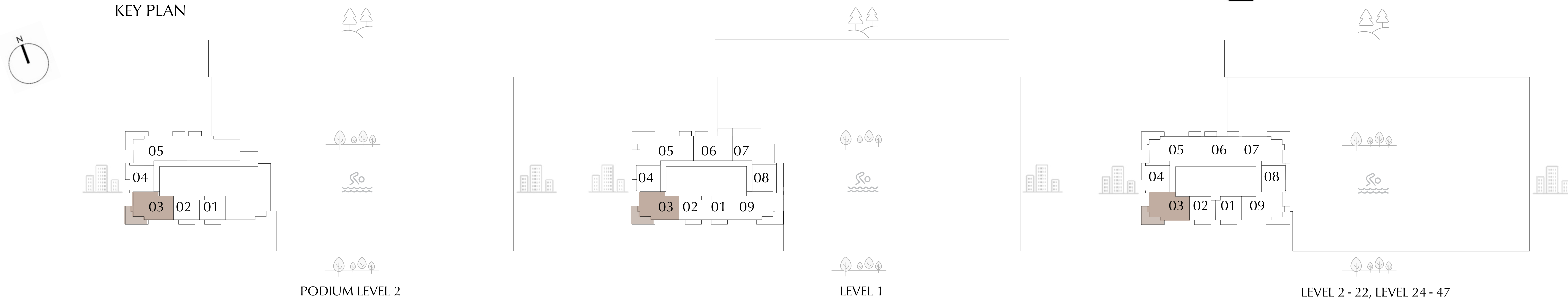
UNIT P203, 103, 203 - 2203, 2403 - 4703

SUITE AREA	1137.96	SQ.FT.	105.72	SQ.M.
BALCONY AREA	287.72	SQ.FT.	26.73	SQ.M.
TOTAL AREA	1425.68	SQ.FT.	132.45	SQ.M.

KEY SECTION



KEY PLAN



FLOOR PLAN 1. All dimensions are in imperial and metric, and measured from finish to finish excluding construction tolerances. 2. All materials, dimensions, and drawings are approximate only. 3. Information is subject to change without notice, at developer's absolute discretion. 4. Actual area may vary from the stated area. 5. Drawings not to scale. 6. All images used are for illustrative purposes only and do not represent the actual size, features, specifications, fittings, and furnishings. 7. The developer reserves the right to make revisions / alterations, at it's absolute discretion, without any liability whatsoever.

SILVA

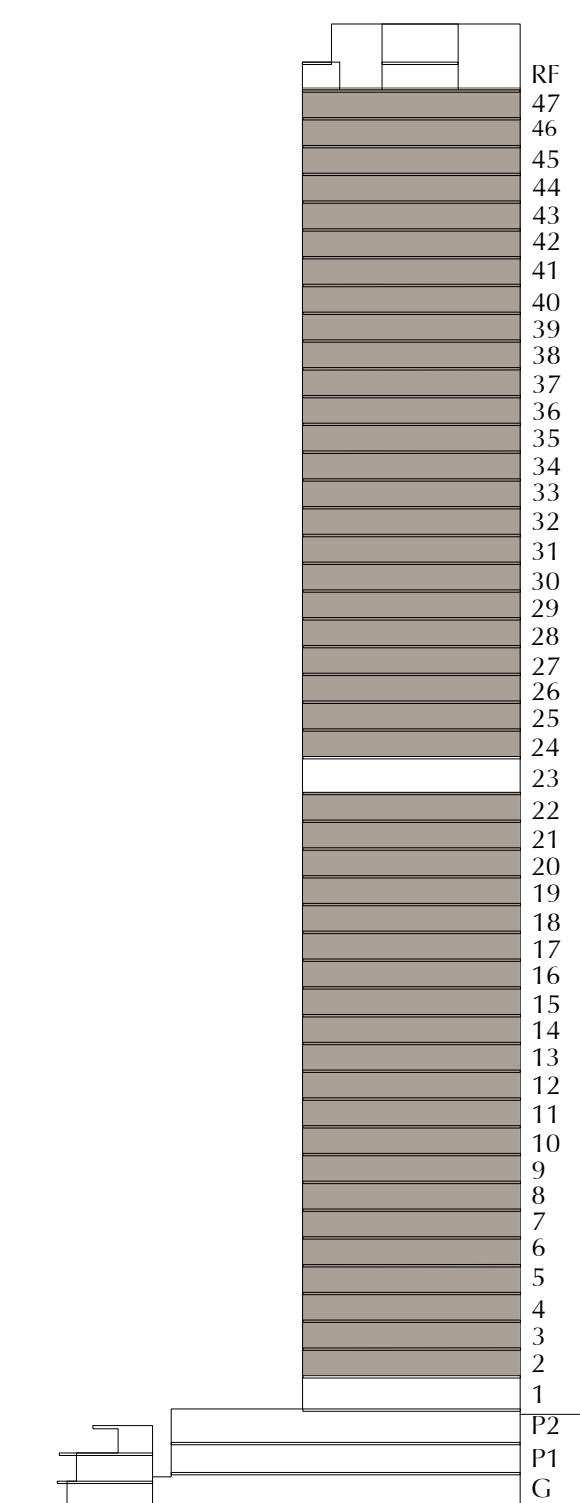
DUBAI CREEK HARBOUR

2 BEDROOM-TYPE 3C

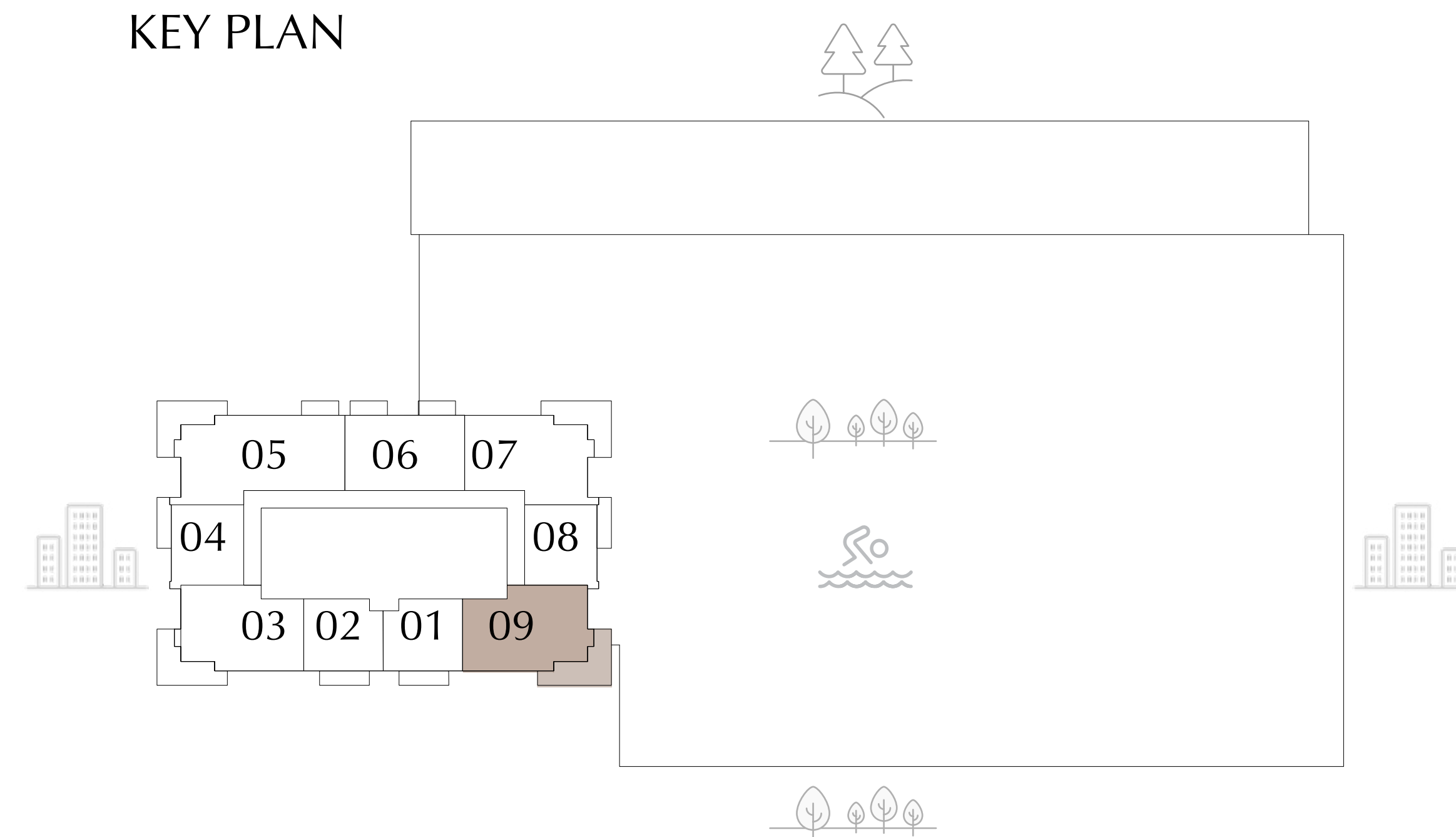
UNIT 209 - 2209, 2409 - 4709

SUITE AREA	1137.21	SQ.FT.	105.65	SQ.M.
BALCONY AREA	302.79	SQ.FT.	28.13	SQ.M.
TOTAL AREA	1440.00	SQ.FT.	133.78	SQ.M.

KEY SECTION



KEY PLAN



LEVEL 2 - 22, LEVEL 24 - 47



FLOOR PLAN 1. All dimensions are in imperial and metric, and measured from finish to finish excluding construction tolerances. 2. All materials, dimensions, and drawings are approximate only. 3. Information is subject to change without notice, at developer's absolute discretion. 4. Actual area may vary from the stated area. 5. Drawings not to scale. 6. All images used are for illustrative purposes only and do not represent the actual size, features, specifications, fittings, and furnishings. 7. The developer reserves the right to make revisions / alterations, at it's absolute discretion, without any liability whatsoever.

EMAAR

SILVA

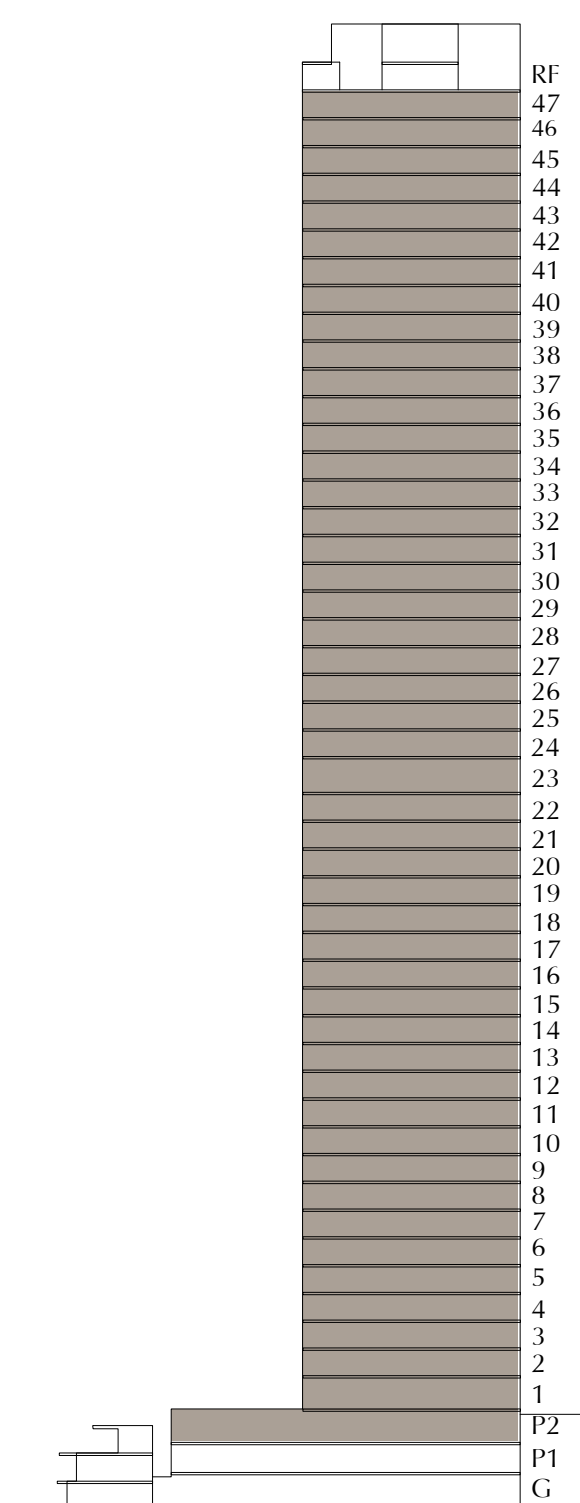
DUBAI CREEK HARBOUR

3 BEDROOM-TYPE 1

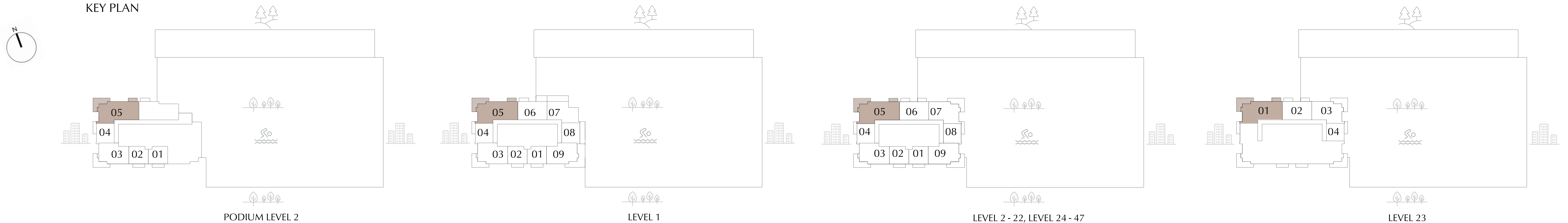
UNIT P205, 105, 205 - 2205, 2301, 2405 - 4705

SUITE AREA	1470.24	SQ.FT.	136.59	SQ.M.
BALCONY AREA	363.71	SQ.FT.	33.79	SQ.M.
TOTAL AREA	1833.95	SQ.FT.	170.38	SQ.M.

KEY SECTION



KEY PLAN



FLOOR PLAN 1. All dimensions are in imperial and metric, and measured from finish to finish excluding construction tolerances. 2. All materials, dimensions, and drawings are approximate only. 3. Information is subject to change without notice, at developer's absolute discretion. 4. Actual area may vary from the stated area. 5. Drawings not to scale. 6. All images used are for illustrative purposes only and do not represent the actual size, features, specifications, fittings, and furnishings. 7. The developer reserves the right to make revisions / alterations, at it's absolute discretion, without any liability whatsoever.

EMAAR

SILVA

DUBAI CREEK HARBOUR

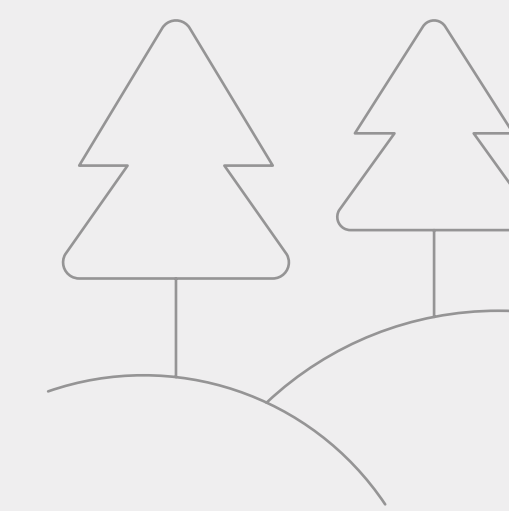
TOWNHOUSES

FLOOR PLANS

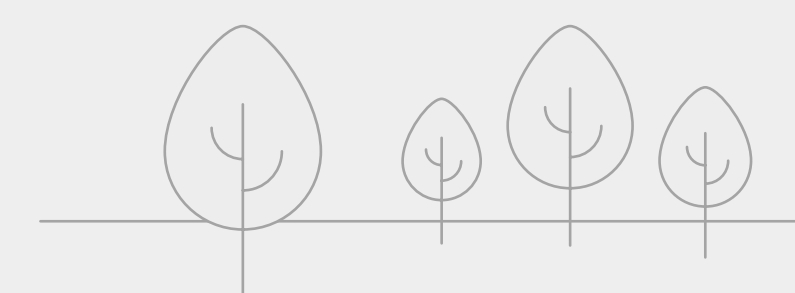
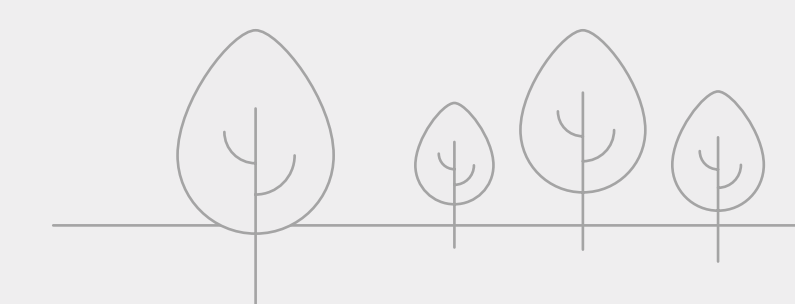
EMAAR

SILVā

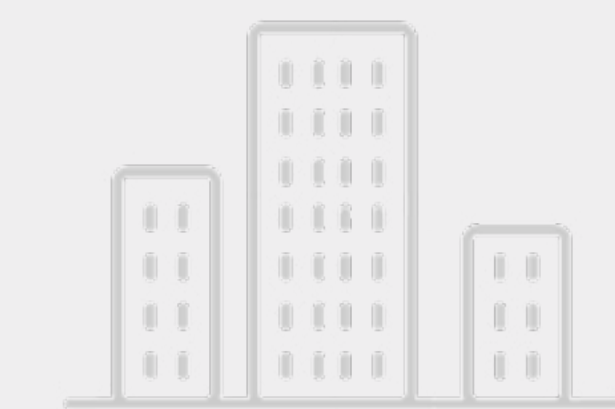
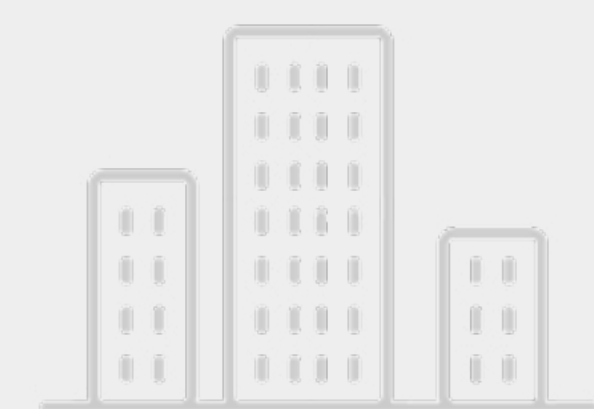
DUBAI CREEK HARBOUR



TOWNHOUSES



TOWER
47 FLOORS
B + G + 2P + 47



SILVA

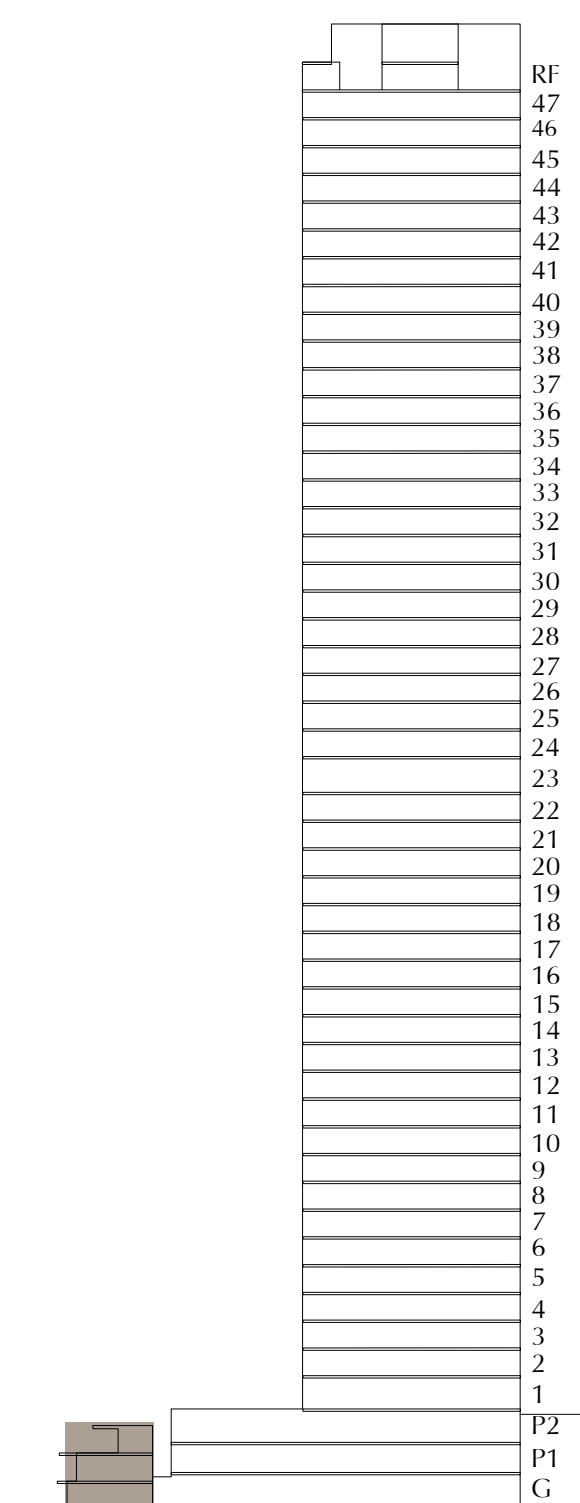
DUBAI CREEK HARBOUR

TOWNHOUSE

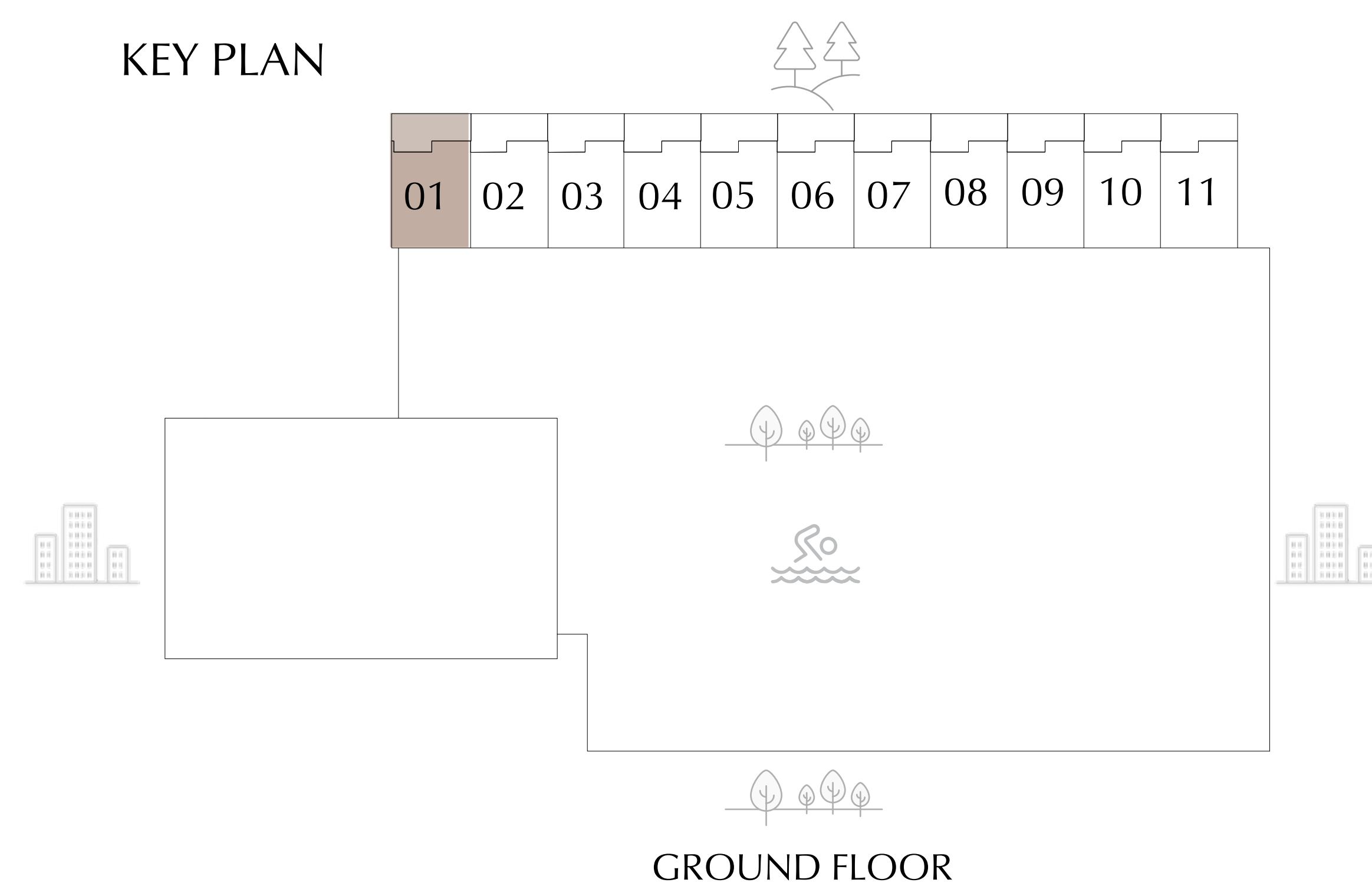
UNIT TH-1

SUITE AREA	2328.23	SQ.FT.	216.30	SQ.M.
TERRACE/BALCONY AREA	937.11	SQ.FT.	87.06	SQ.M.
TOTAL AREA	3265.34	SQ.FT.	303.36	SQ.M.

KEY SECTION



KEY PLAN



GROUND FLOOR LEVEL



PODIUM LEVEL 1



PODIUM LEVEL 2

FLOOR PLAN 1. All dimensions are in imperial and metric, and measured from finish to finish excluding construction tolerances. 2. All materials, dimensions, and drawings are approximate only. 3. Information is subject to change without notice, at developer's absolute discretion. 4. Actual area may vary from the stated area. 5. Drawings not to scale. 6. All images used are for illustrative purposes only and do not represent the actual size, features, specifications, fittings, and furnishings. 7. The developer reserves the right to make revisions / alterations, at it's absolute discretion, without any liability whatsoever.

EMAAR

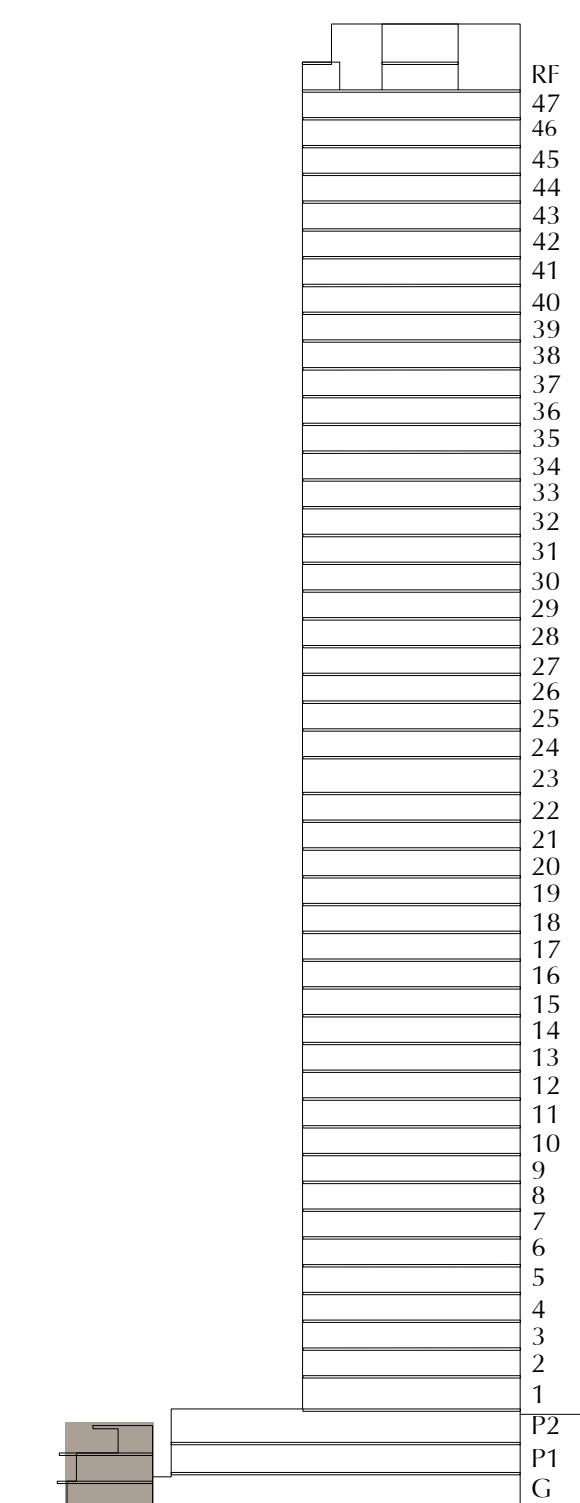
SILVA

DUBAI CREEK HARBOUR

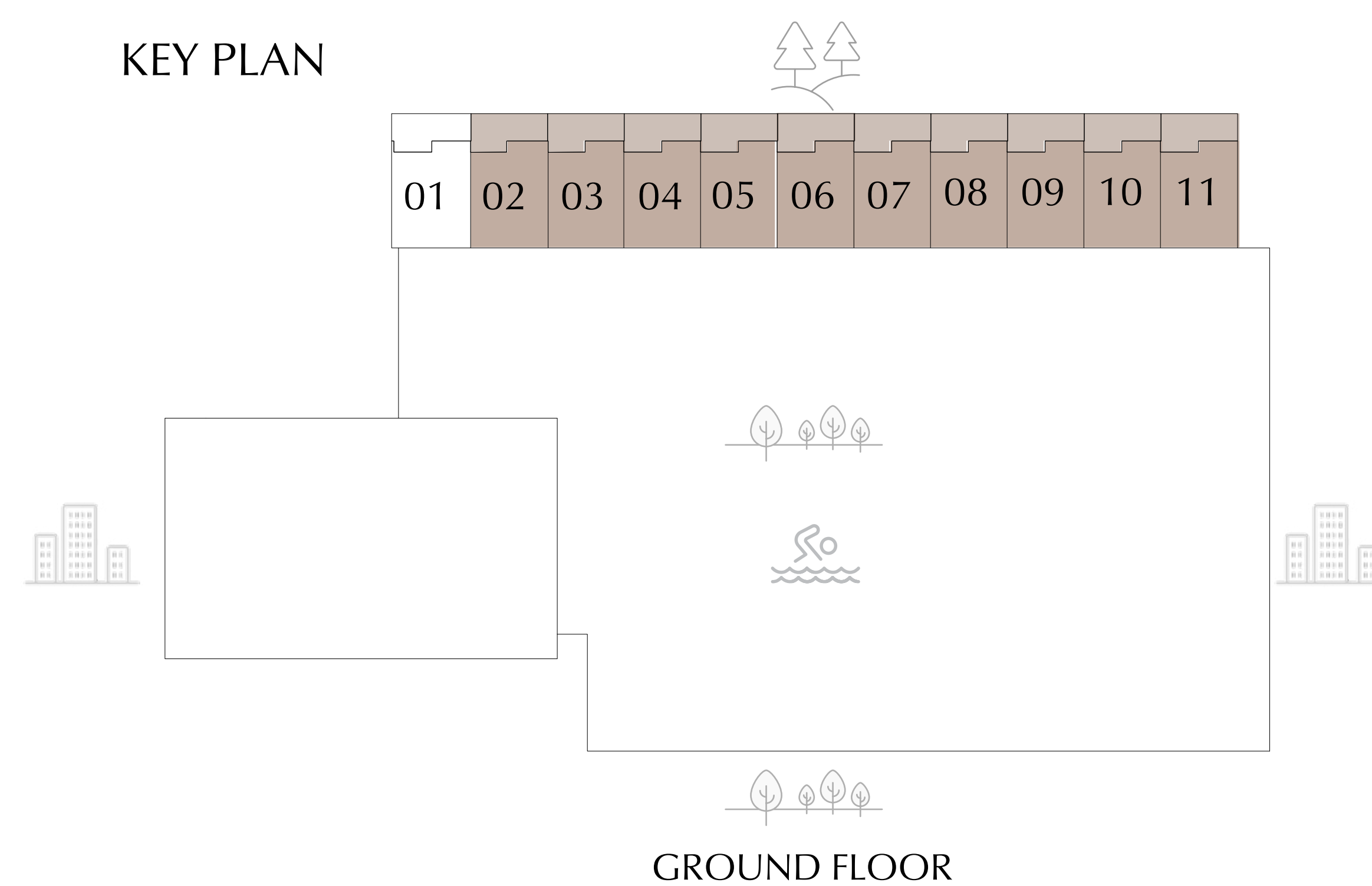
TOWNHOUSE UNIT TH-2 - TH-11

SUITE AREA	2328.23	SQ.FT.	216.30	SQ.M.
TERRACE/BALCONY AREA	925.05	SQ.FT.	85.94	SQ.M.
TOTAL AREA	3253.28	SQ.FT.	302.24	SQ.M.

KEY SECTION



KEY PLAN



GROUND FLOOR LEVEL



PODIUM LEVEL 1



PODIUM LEVEL 2

FLOOR PLAN 1. All dimensions are in imperial and metric, and measured from finish to finish excluding construction tolerances. 2. All materials, dimensions, and drawings are approximate only. 3. Information is subject to change without notice, at developer's absolute discretion. 4. Actual area may vary from the stated area. 5. Drawings not to scale. 6. All images used are for illustrative purposes only and do not represent the actual size, features, specifications, fittings, and furnishings. 7. The developer reserves the right to make revisions / alterations, at it's absolute discretion, without any liability whatsoever.

EMAAR