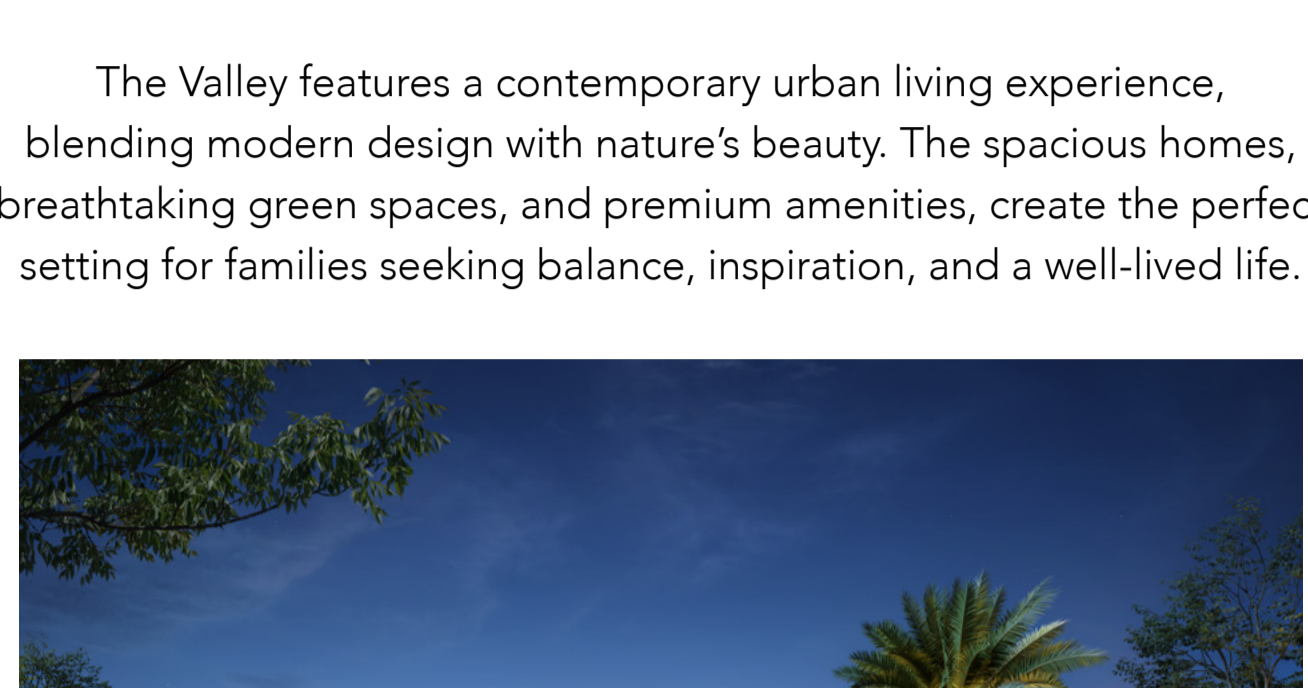




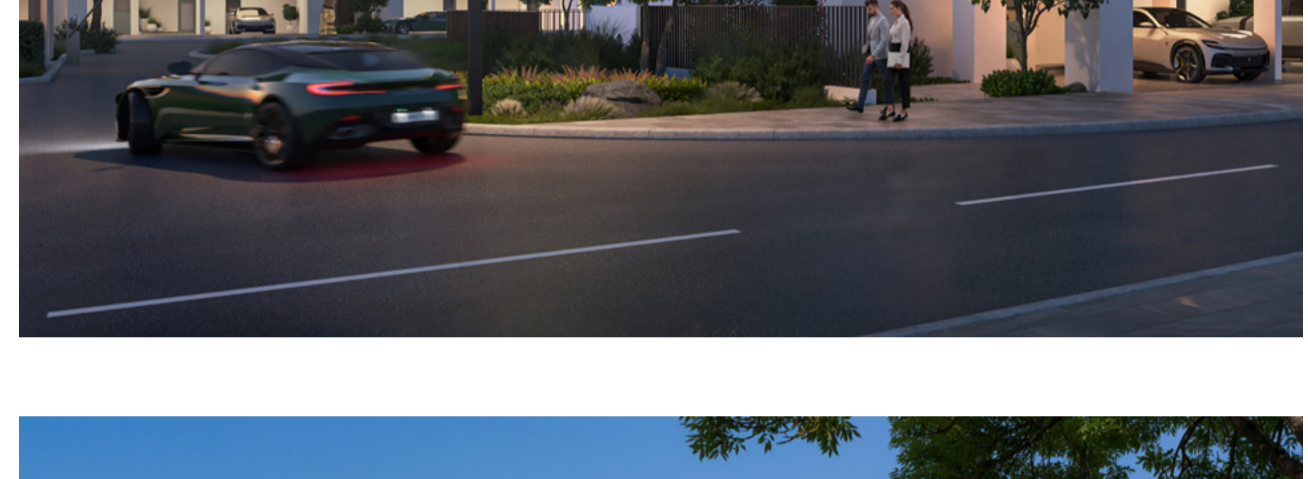
THE VALLEY

The Valley is a picturesque community where contemporary neighborhoods blend with lush valleys and vibrant green spaces. A place to call home, it offers a well-rounded lifestyle, from top schools to leisure activities. Every need is met in a tranquil, natural setting.



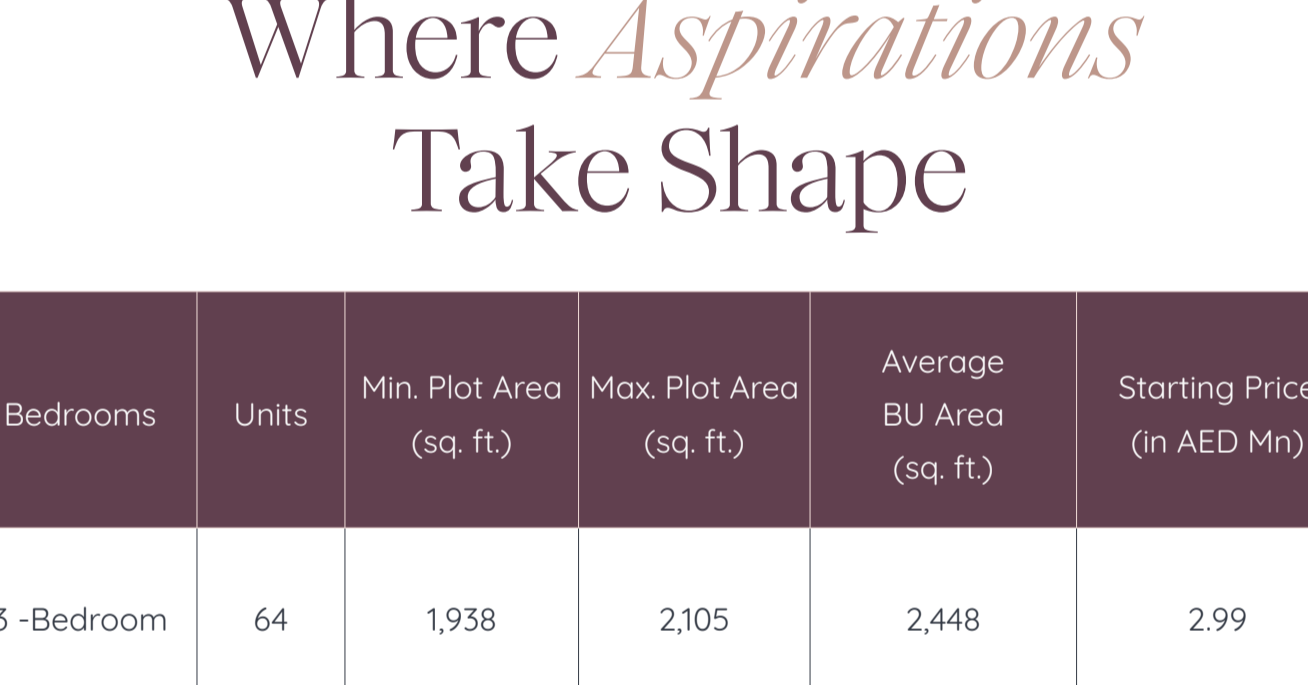
Live Green,
Live Better

The Valley features a contemporary urban living experience, blending modern design with nature's beauty. The spacious homes, breathtaking green spaces, and premium amenities, create the perfect setting for families seeking balance, inspiration, and a well-lived life.



Residential Units

Stunning 3 or 4 bedroom homes with 2 different façade options. The interiors feature a neutral palette for adaptability, inviting residents to personalize their space

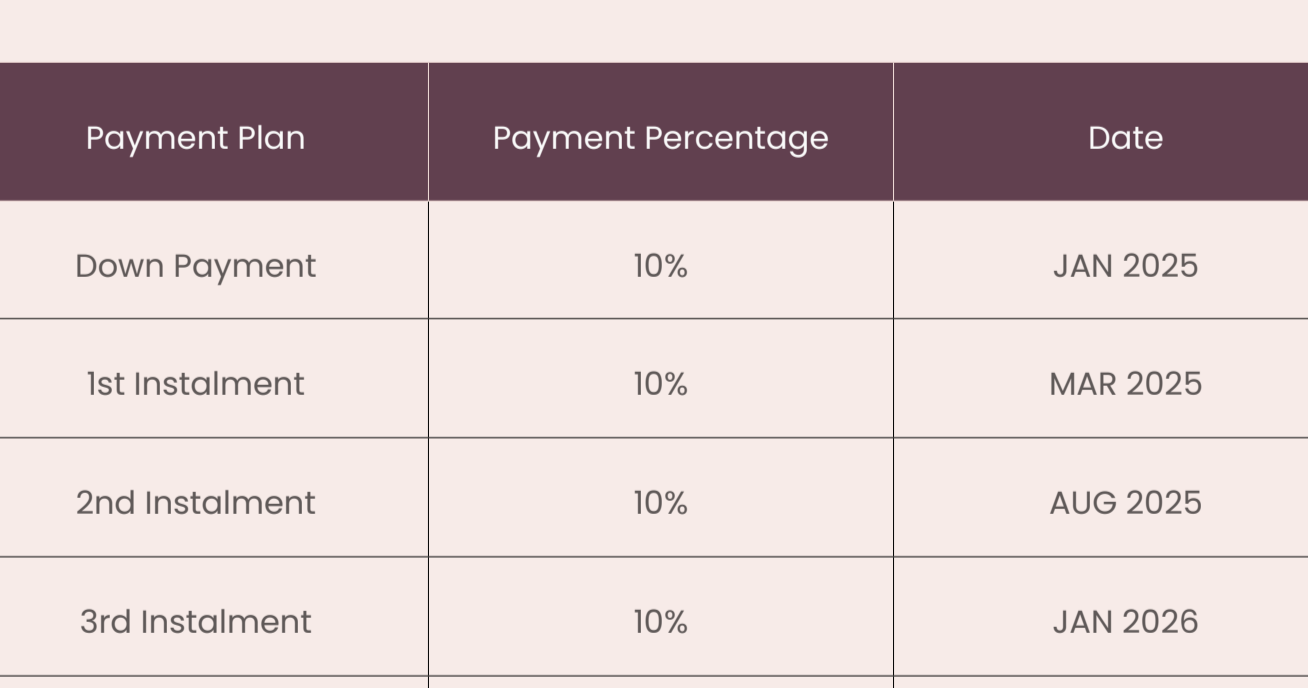
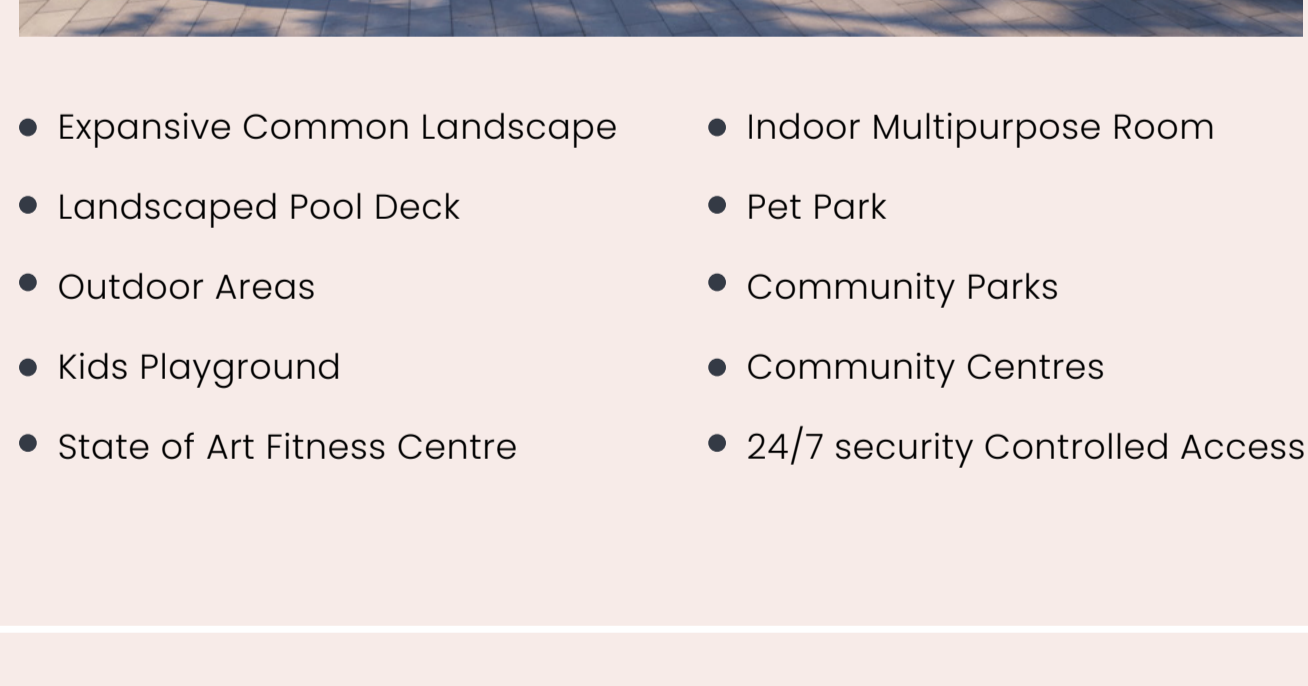


Where Aspirations
Take Shape

Bedrooms	Units	Min. Plot Area (sq. ft.)	Max. Plot Area (sq. ft.)	Average BU Area (sq. ft.)	Starting Price (in AED Mn)
3-Bedroom	64	1,938	2,105	2,448	2.99
4-Bedroom	64	2,969	4,565	2,759	3.45

Convenient Living at
Your Doorstep

A neighbourhood within a natural, country setting, complete with world-class resort-like amenities.



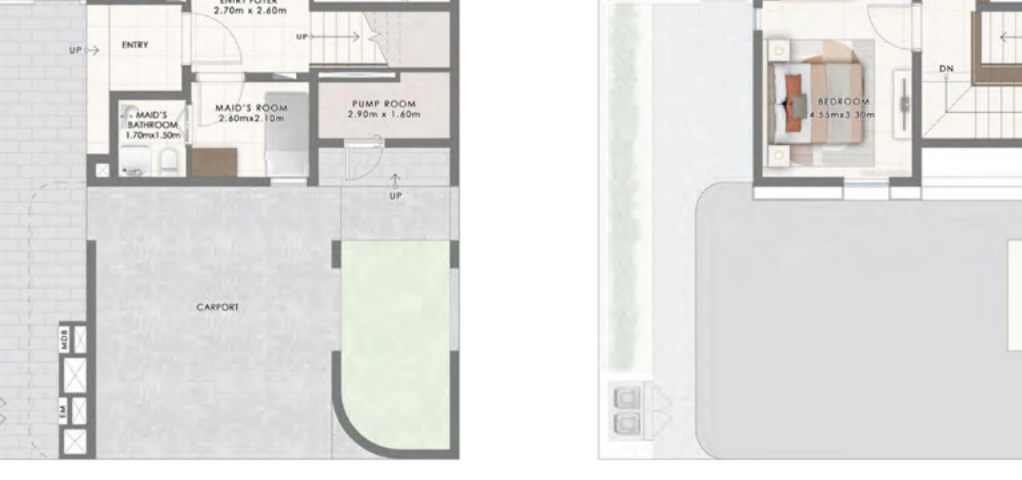
- Expansive Common Landscape
- Landscaped Pool Deck
- Outdoor Areas
- Kids Playground
- State of Art Fitness Centre
- Indoor Multipurpose Room
- Pet Park
- Community Parks
- Community Centres
- 24/7 security Controlled Access

Payment Plan

Payment Plan	Payment Percentage	Date
Down Payment	10%	JAN 2025
1st Instalment	10%	MAR 2025
2nd Instalment	10%	AUG 2025
3rd Instalment	10%	JAN 2026
4th Instalment 30% Construction Completion	10%	JUN 2026
5th Instalment 50% Construction Completion	10%	NOV 2026
6th Instalment 70% Construction Completion	10%	APR 2027
7th Instalment 90% Construction Completion	10%	SEP 2027
8th Instalment 100% Construction Completion	20%	JUN 2028

Floor Plan

Typical 3 Bedroom Floorplan



GROUND FLOOR

FIRST FLOOR

Typical 4 Bedroom Floorplan

GROUND FLOOR

FIRST FLOOR