

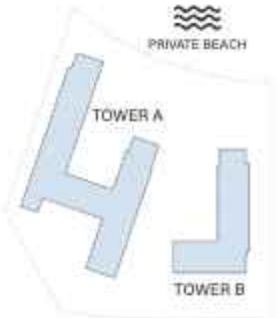


ELLINGTON
PROPERTIES



ELLINGTON COVE I

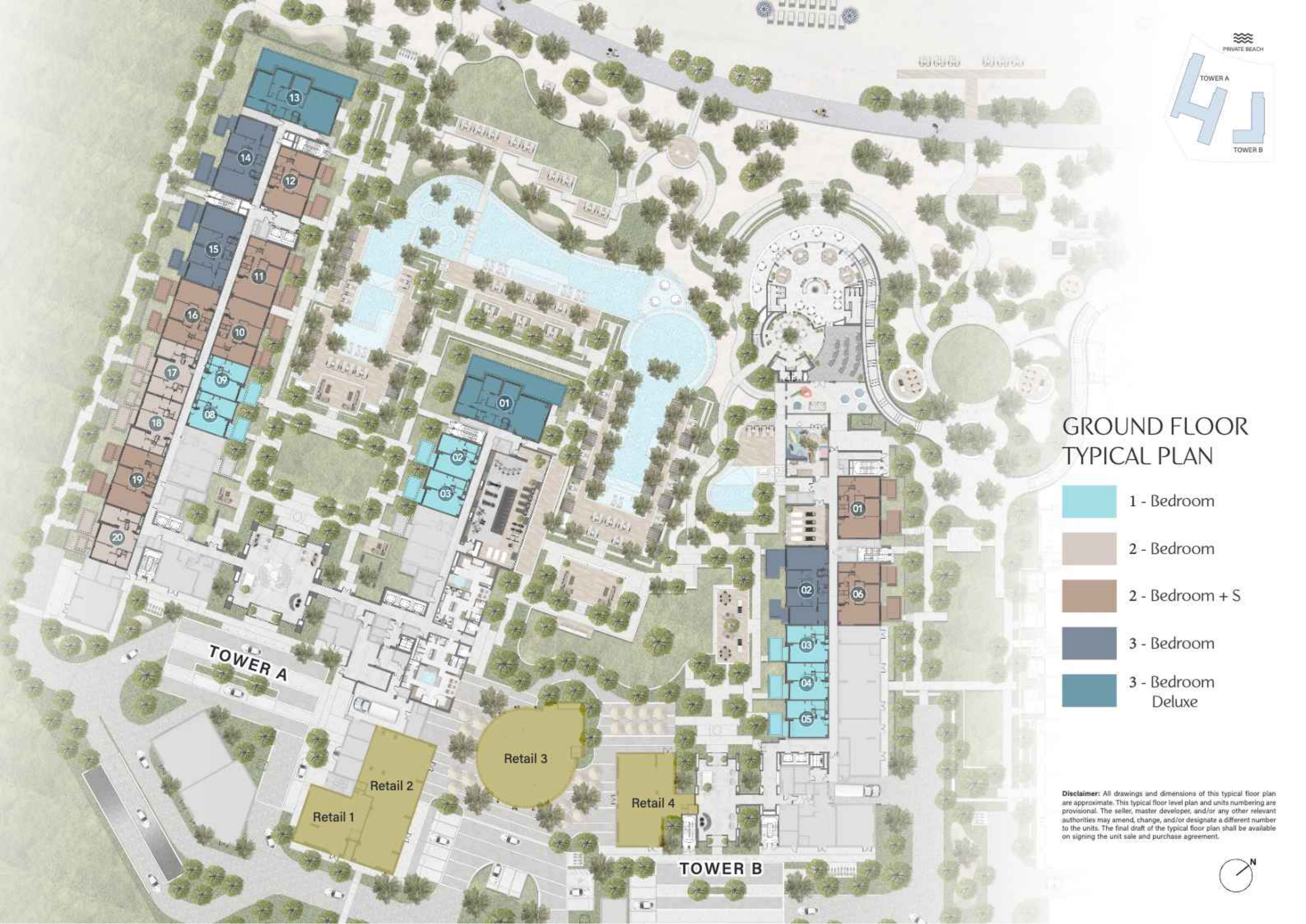
FLOOR PLAN

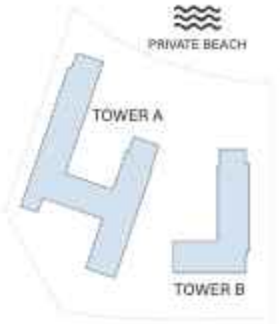


GROUND FLOOR TYPICAL PLAN

- 1 - Bedroom
- 2 - Bedroom
- 2 - Bedroom + S
- 3 - Bedroom
- 3 - Bedroom Deluxe

Disclaimer: All drawings and dimensions of this typical floor plan are approximate. This typical floor level plan and units numbering are provisional. The seller, master developer, and/or any other relevant authorities may amend, change, and/or designate a different number to the units. The final draft of the typical floor plan shall be available on signing the unit sale and purchase agreement.

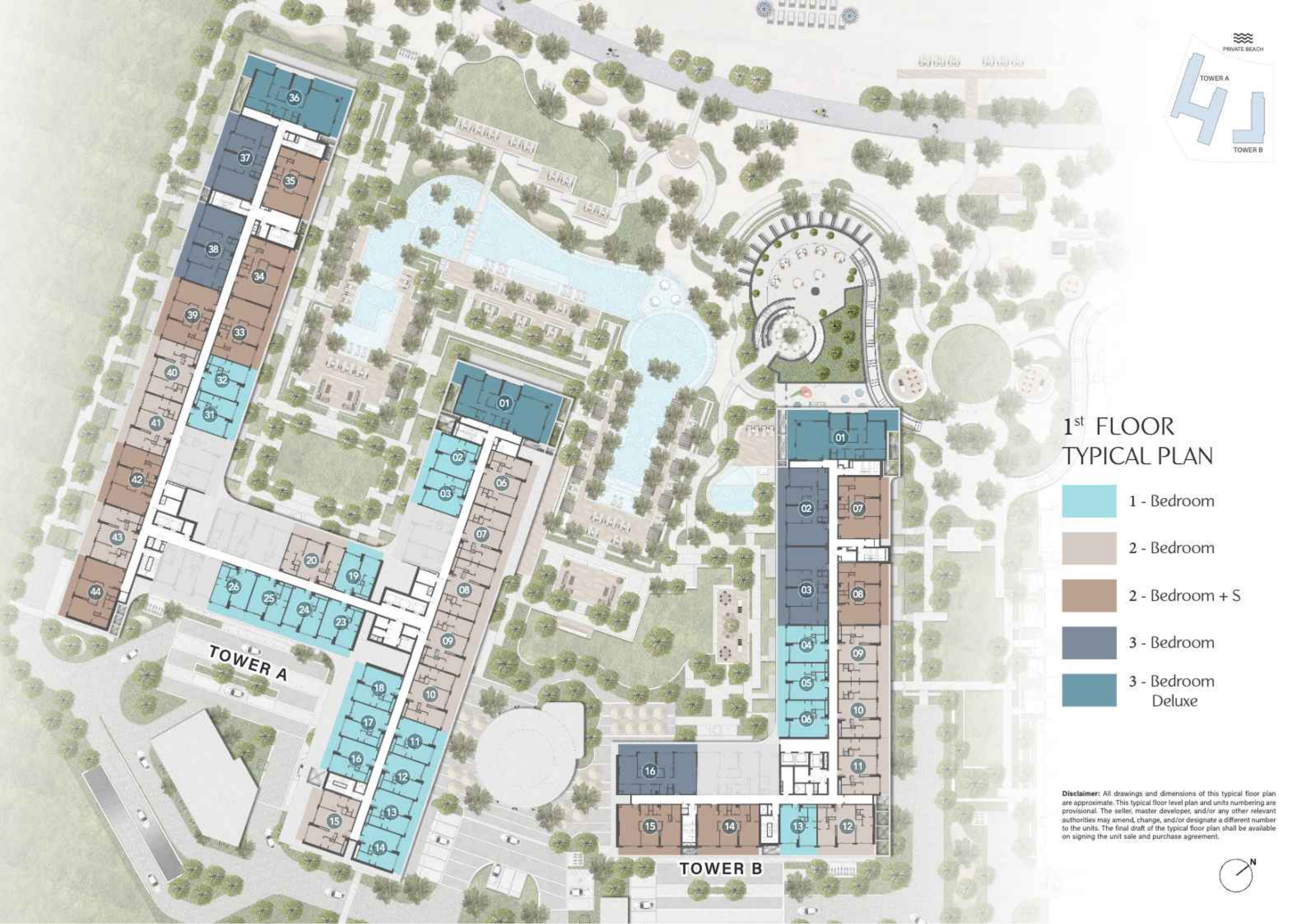


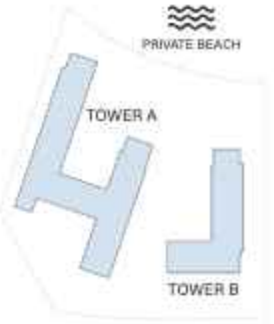


1st FLOOR TYPICAL PLAN

- 1 - Bedroom
- 2 - Bedroom
- 2 - Bedroom + S
- 3 - Bedroom
- 3 - Bedroom Deluxe

Disclaimer: All drawings and dimensions of this typical floor plan are approximate. This typical floor level plan and units numbering are provisional. The seller, master developer, and/or any other relevant authorities may amend, change, and/or designate a different number to the units. The final draft of the typical floor plan shall be available on signing the unit sale and purchase agreement.

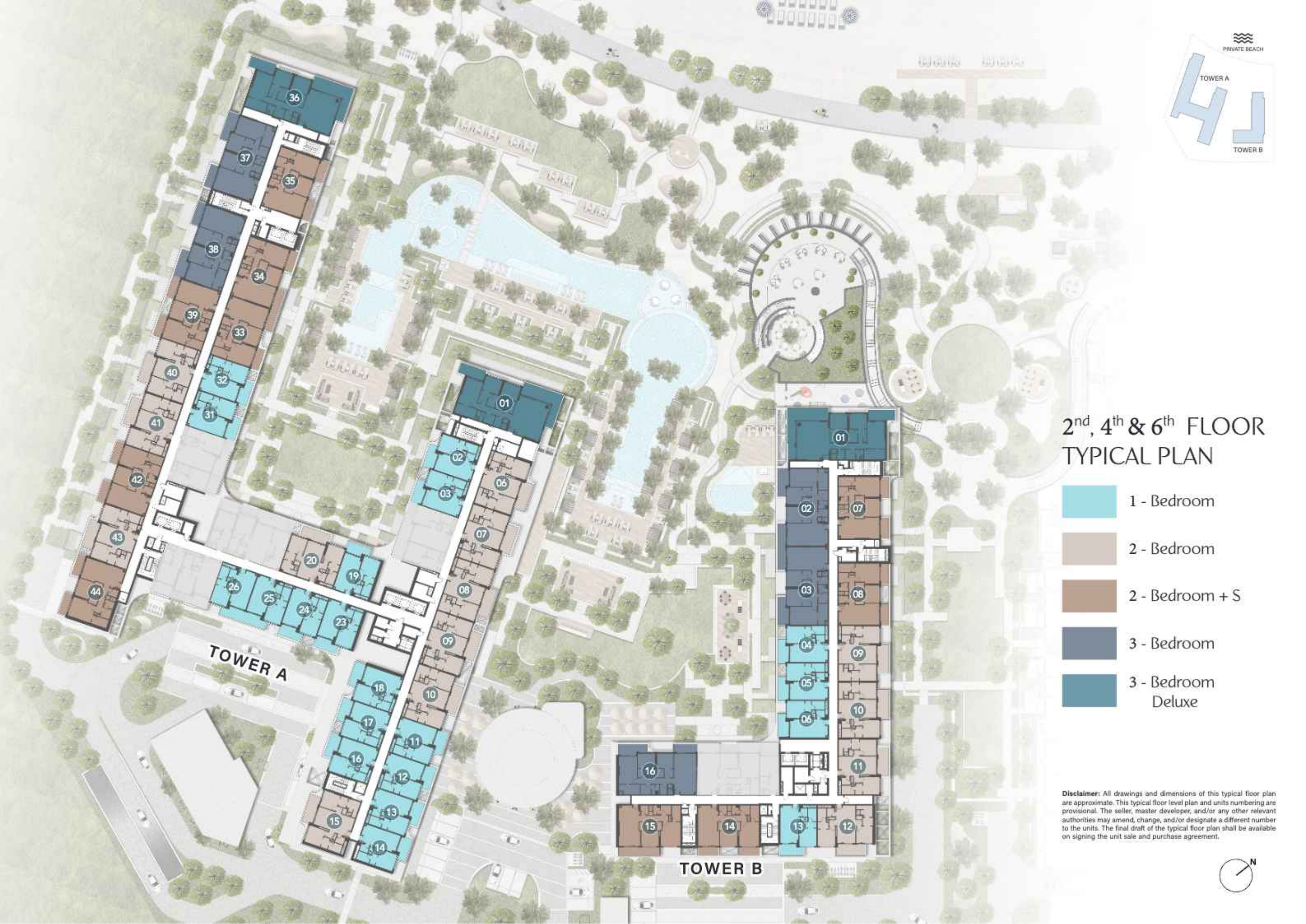
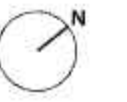


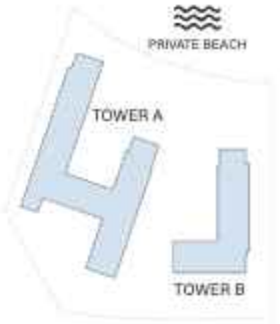


2nd, 4th & 6th FLOOR TYPICAL PLAN

- 1 - Bedroom
- 2 - Bedroom
- 2 - Bedroom + S
- 3 - Bedroom
- 3 - Bedroom
Deluxe

Disclaimer: All drawings and dimensions of this typical floor plan are approximate. This typical floor level plan and units numbering are provisional. The seller, master developer, and/or any other relevant authorities may amend, change, and/or designate a different number to the units. The final draft of the typical floor plan shall be available on signing the unit sale and purchase agreement.

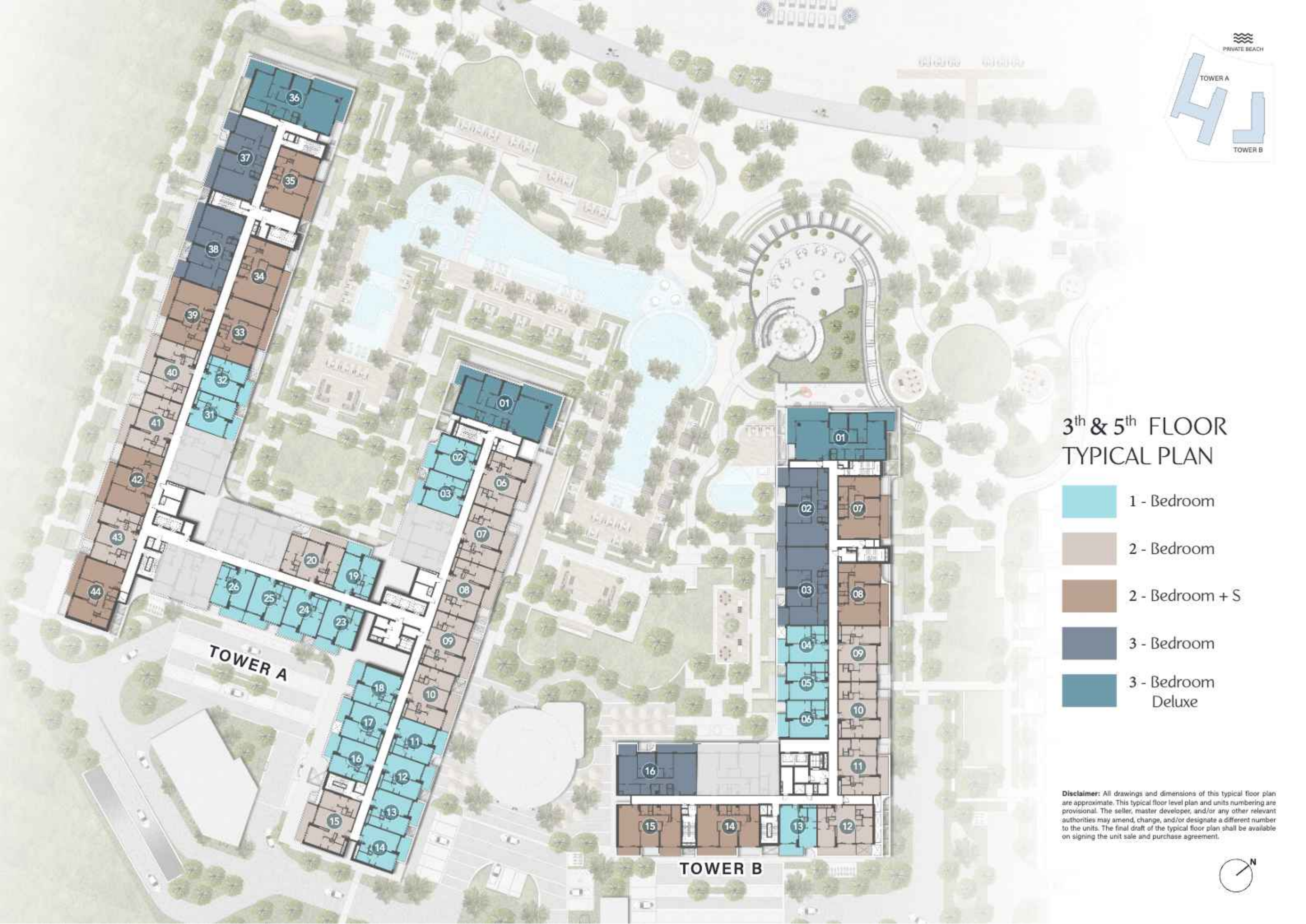


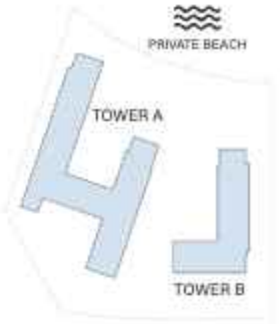


3th & 5th FLOOR TYPICAL PLAN

- 1 - Bedroom
- 2 - Bedroom
- 2 - Bedroom + S
- 3 - Bedroom
- 3 - Bedroom Deluxe

Disclaimer: All drawings and dimensions of this typical floor plan are approximate. This typical floor level plan and units numbering are provisional. The seller, master developer, and/or any other relevant authorities may amend, change, and/or designate a different number to the units. The final draft of the typical floor plan shall be available on signing the unit sale and purchase agreement.

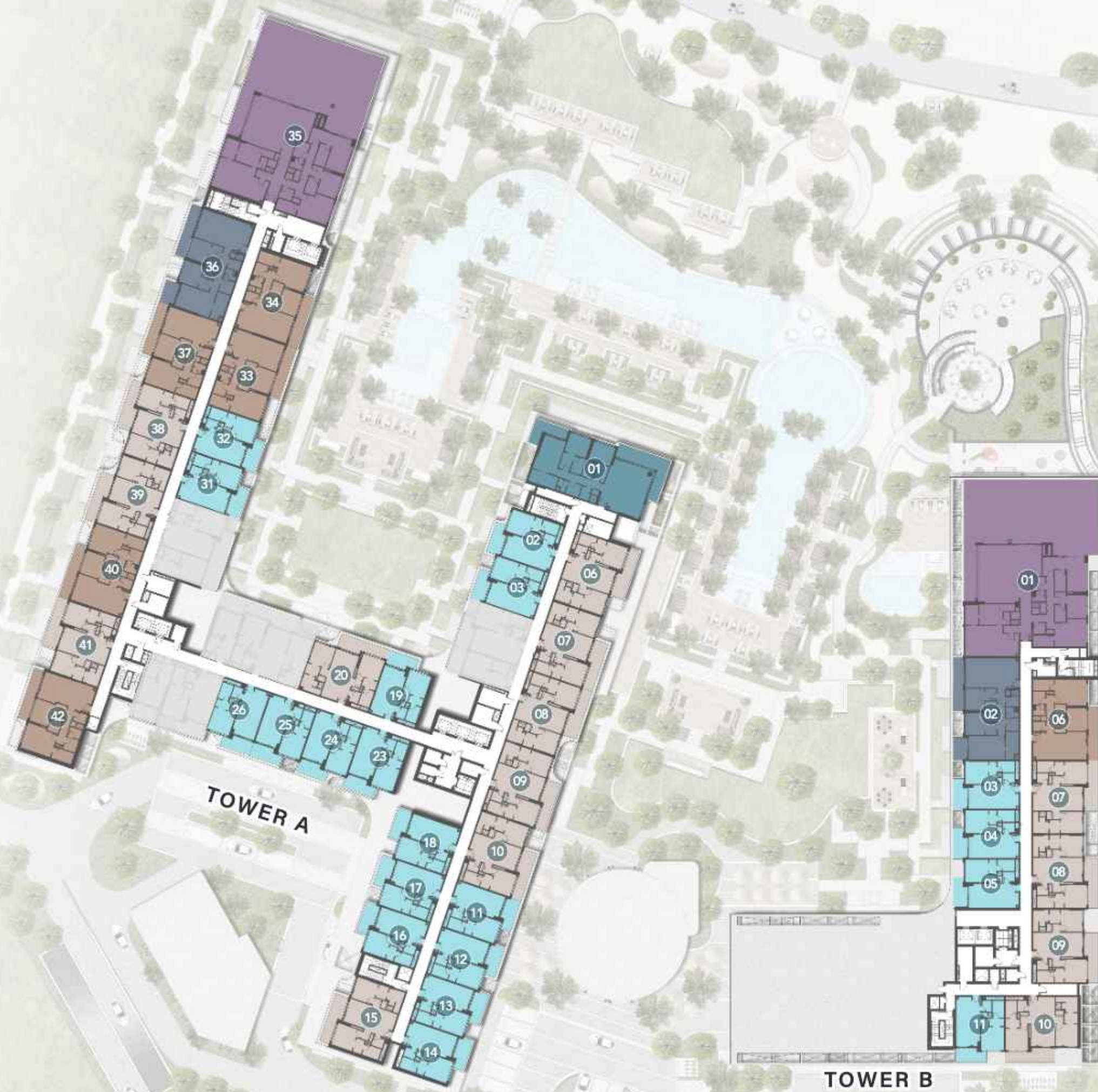




7th FLOOR TYPICAL PLAN

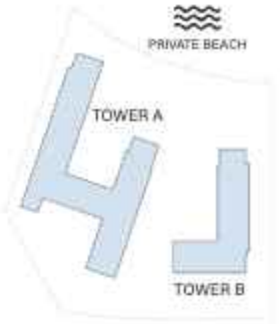
- 1 - Bedroom
- 2 - Bedroom
- 2 - Bedroom + S
- 3 - Bedroom
- 3 - Bedroom Deluxe
- 4 - Bedroom Penthouse

Disclaimer: All drawings and dimensions of this typical floor plan are approximate. This typical floor level plan and units numbering are provisional. The seller, master developer, and/or any other relevant authorities may amend, change, and/or designate a different number to the units. The final draft of the typical floor plan shall be available on signing the unit sale and purchase agreement.



TOWER A

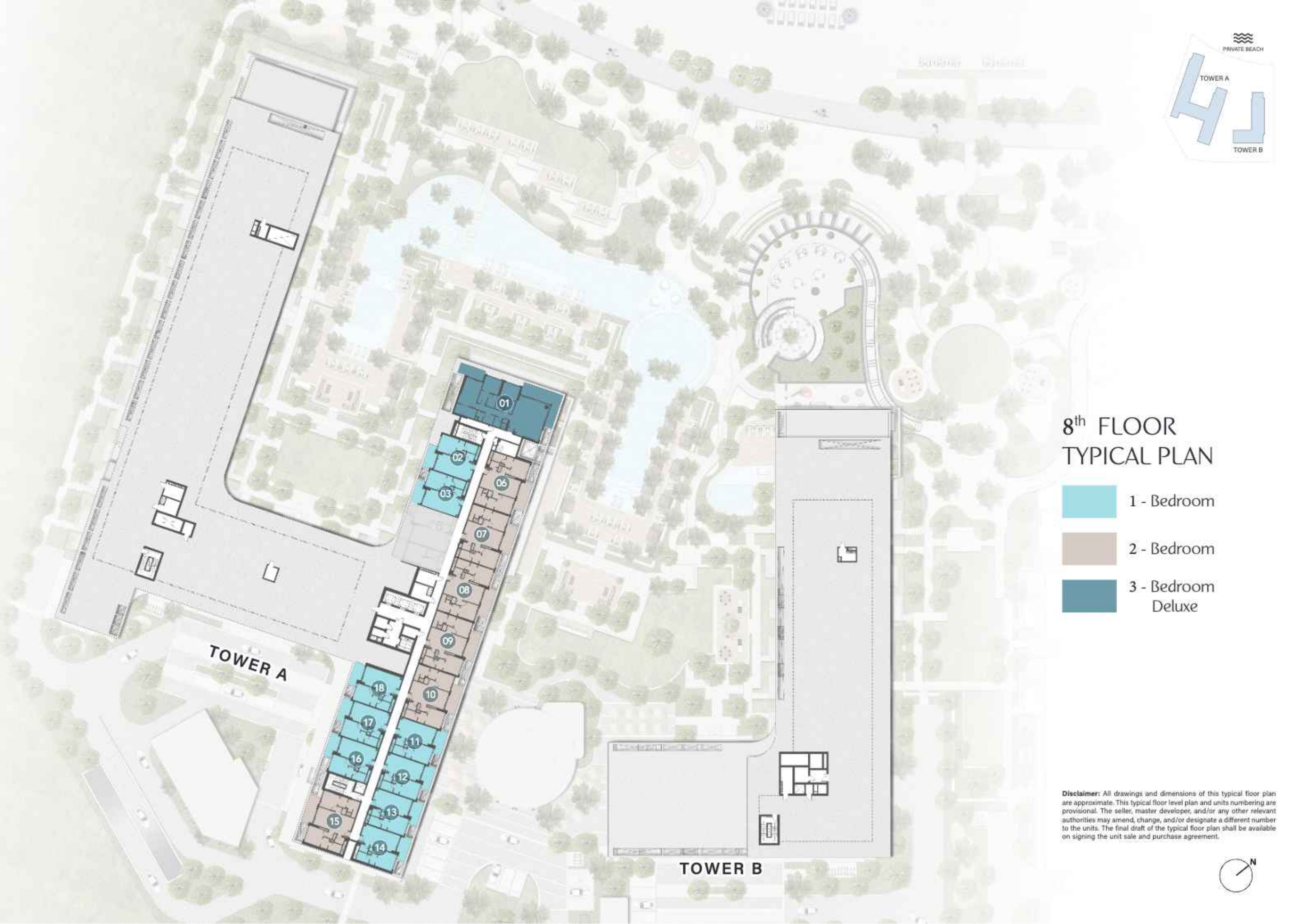
TOWER B

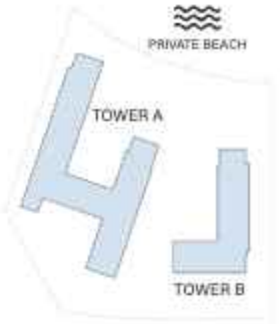


8th FLOOR TYPICAL PLAN

-  1 - Bedroom
-  2 - Bedroom
-  3 - Bedroom
Deluxe

Disclaimer: All drawings and dimensions of this typical floor plan are approximate. This typical floor level plan and units numbering are provisional. The seller, master developer, and/or any other relevant authorities may amend, change, and/or designate a different number to the units. The final draft of the typical floor plan shall be available on signing the unit sale and purchase agreement.

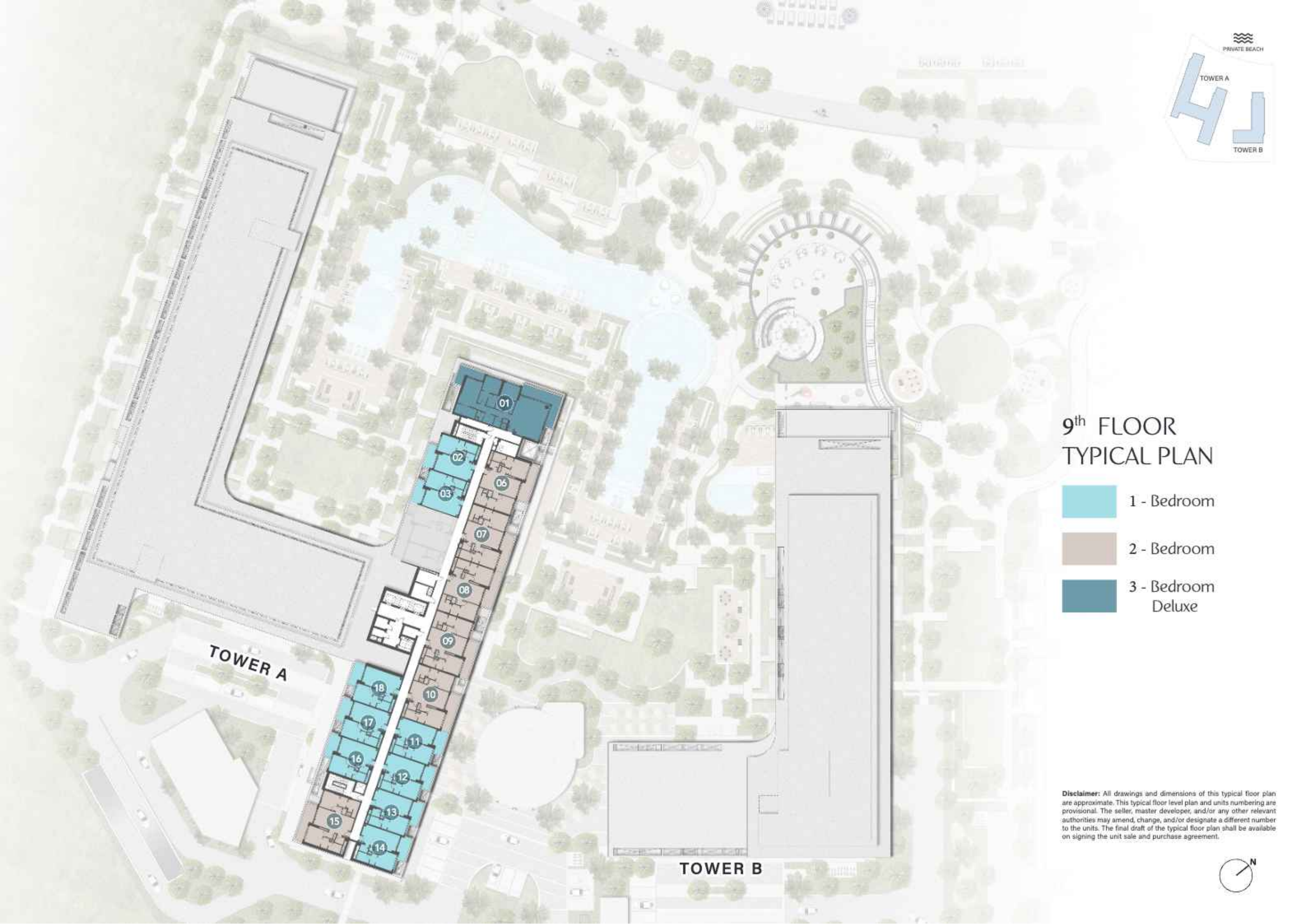




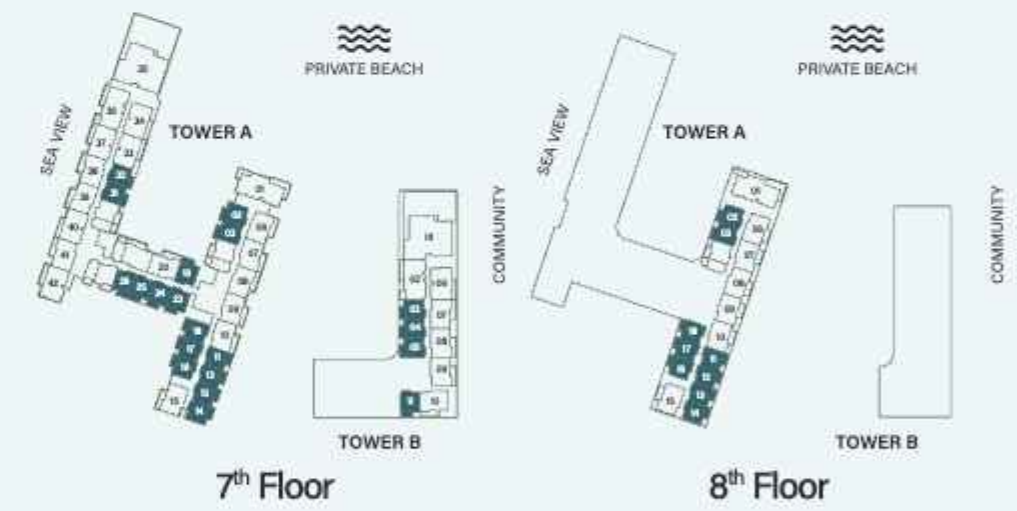
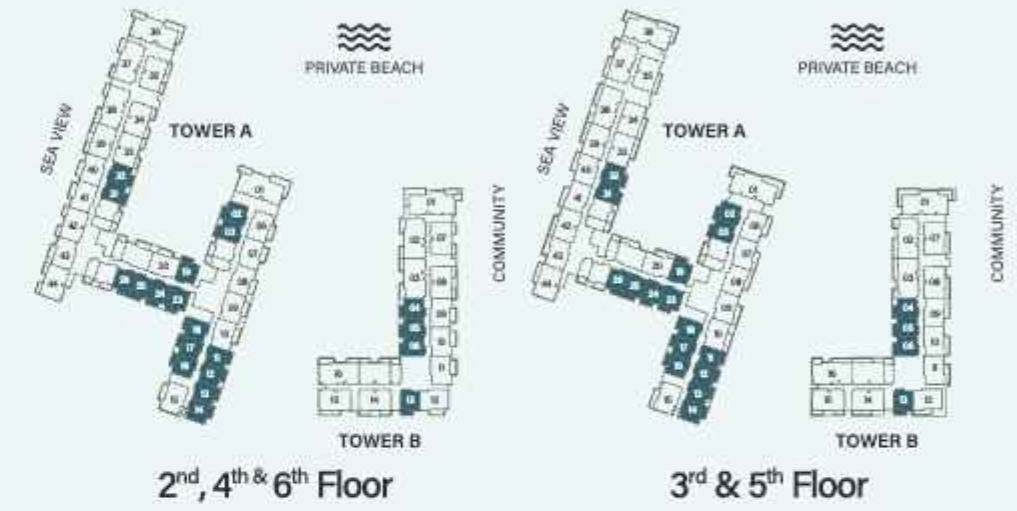
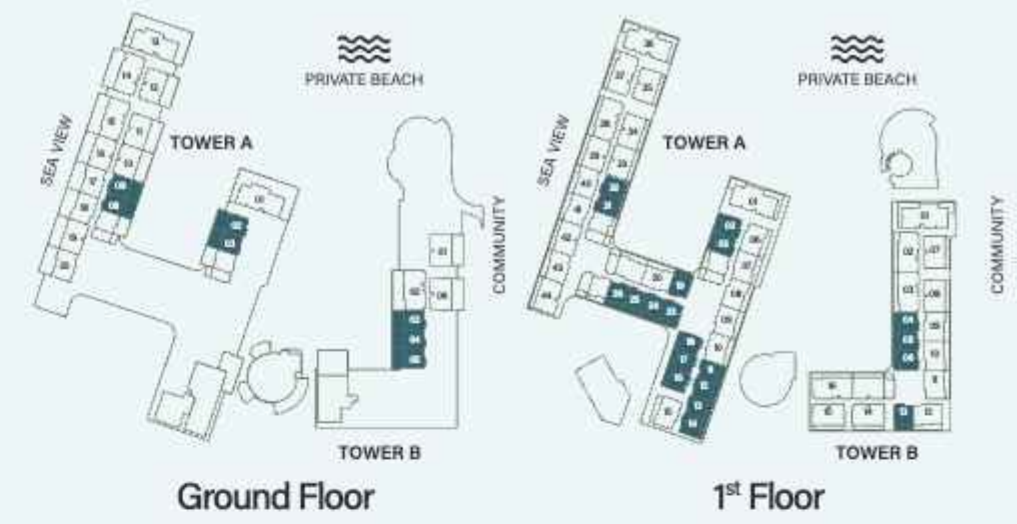
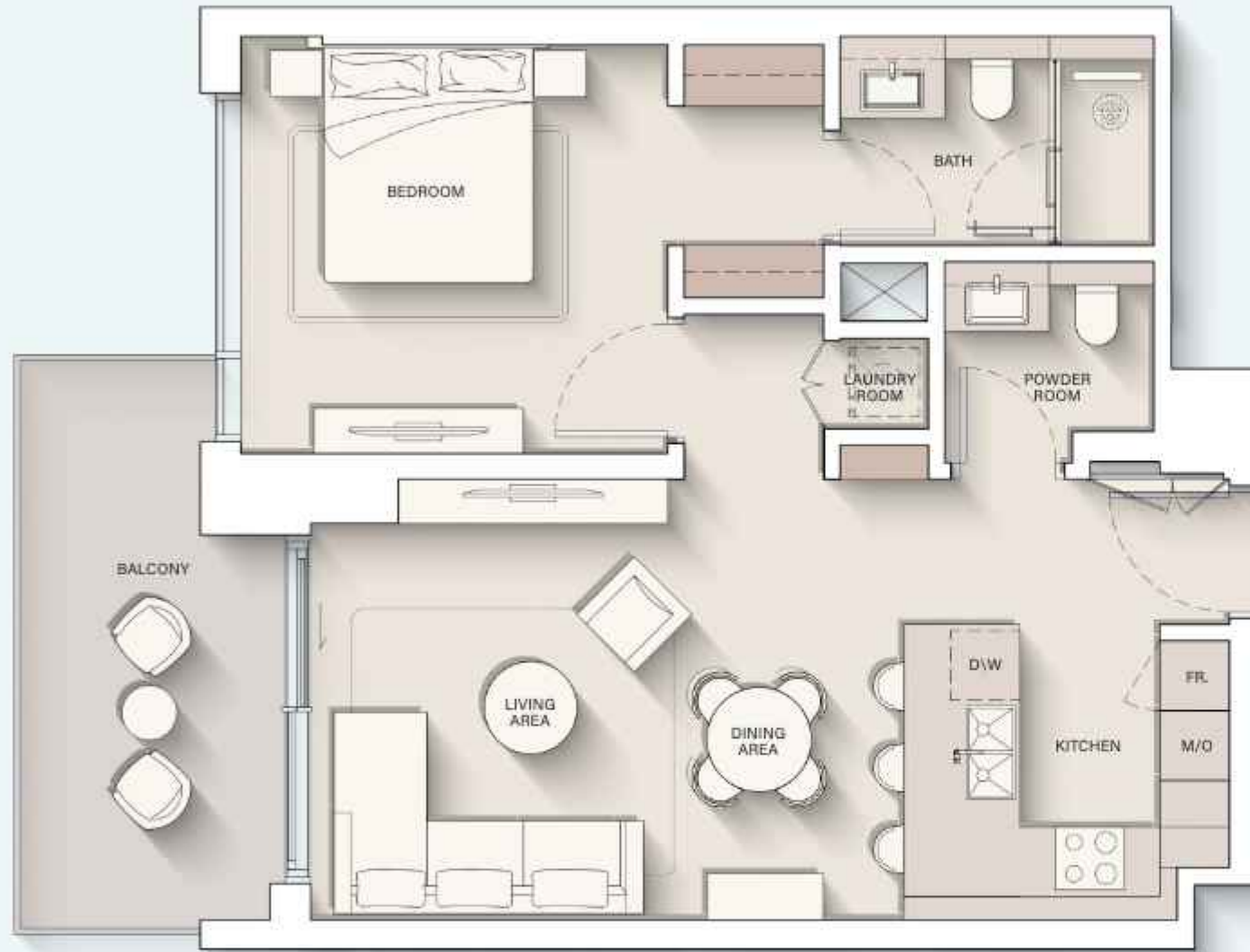
9th FLOOR TYPICAL PLAN

-  1 - Bedroom
-  2 - Bedroom
-  3 - Bedroom
Deluxe

Disclaimer: All drawings and dimensions of this typical floor plan are approximate. This typical floor level plan and units numbering are provisional. The seller, master developer, and/or any other relevant authorities may amend, change, and/or designate a different number to the units. The final draft of the typical floor plan shall be available on signing the unit sale and purchase agreement.



1 - BEDROOM

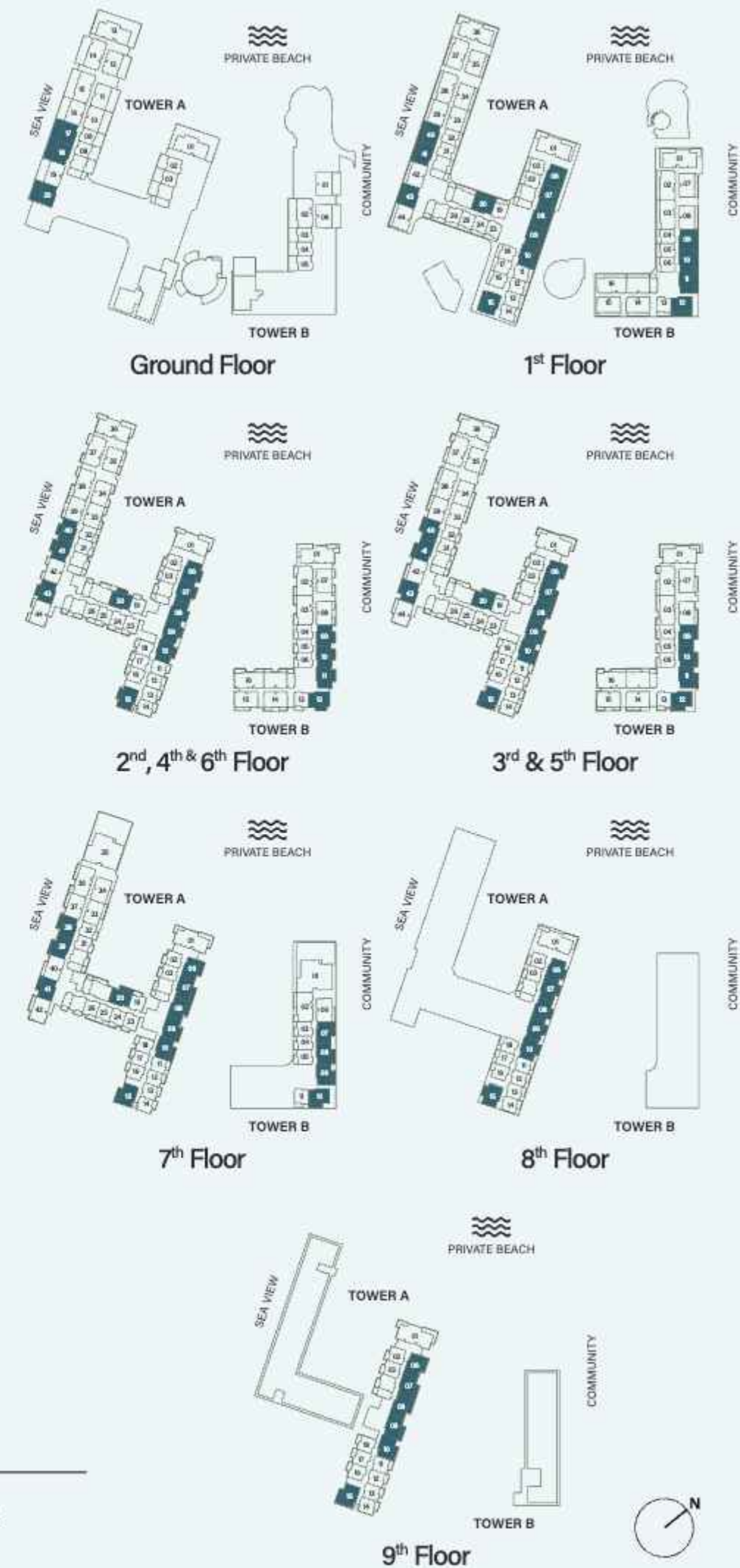
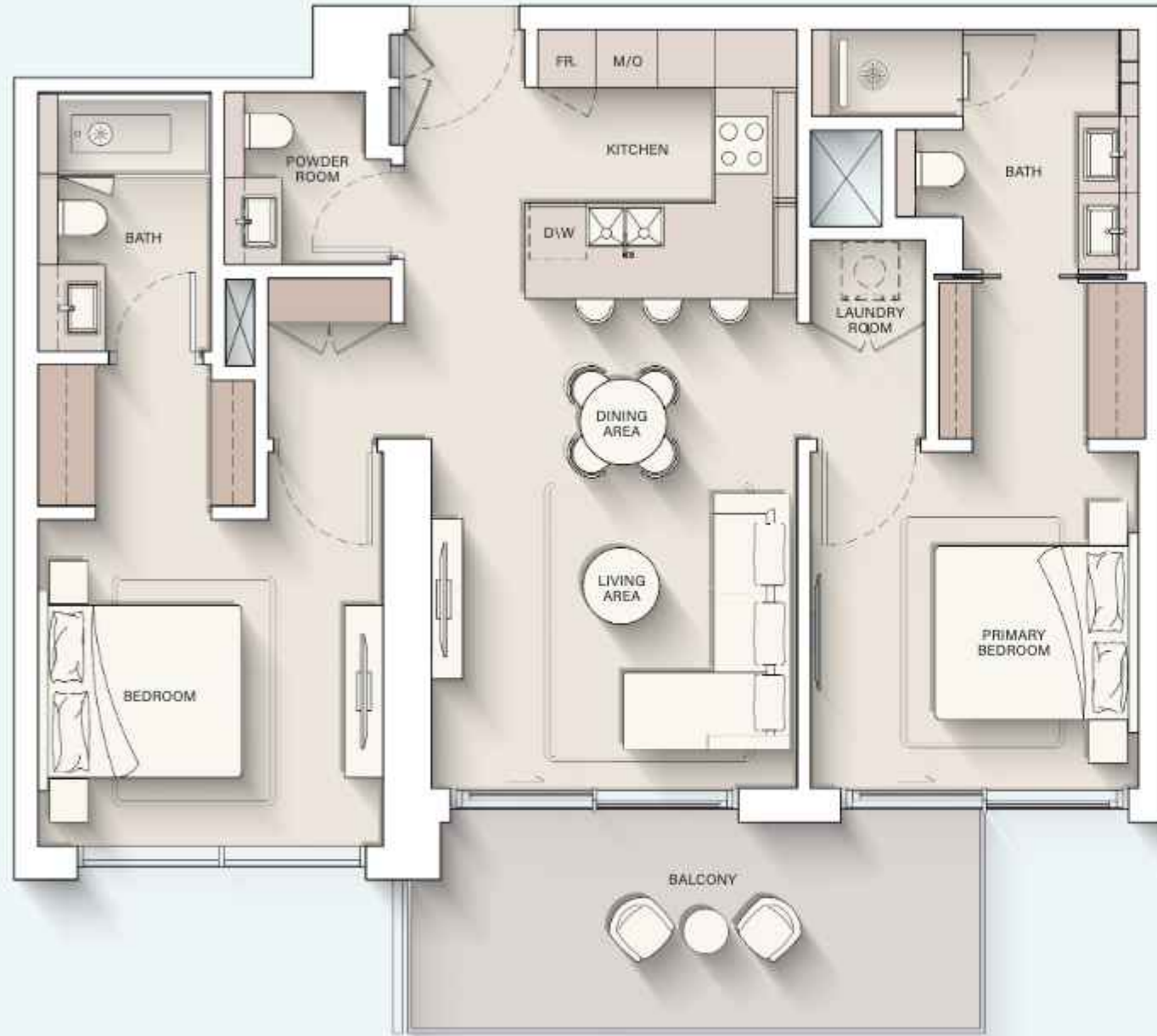


Internal Living Area : **692.44 sq. ft**

Outdoor Living Area : **123.68 sq. ft**

Total Living Area : **816.12 sq. ft**

2 - BEDROOM

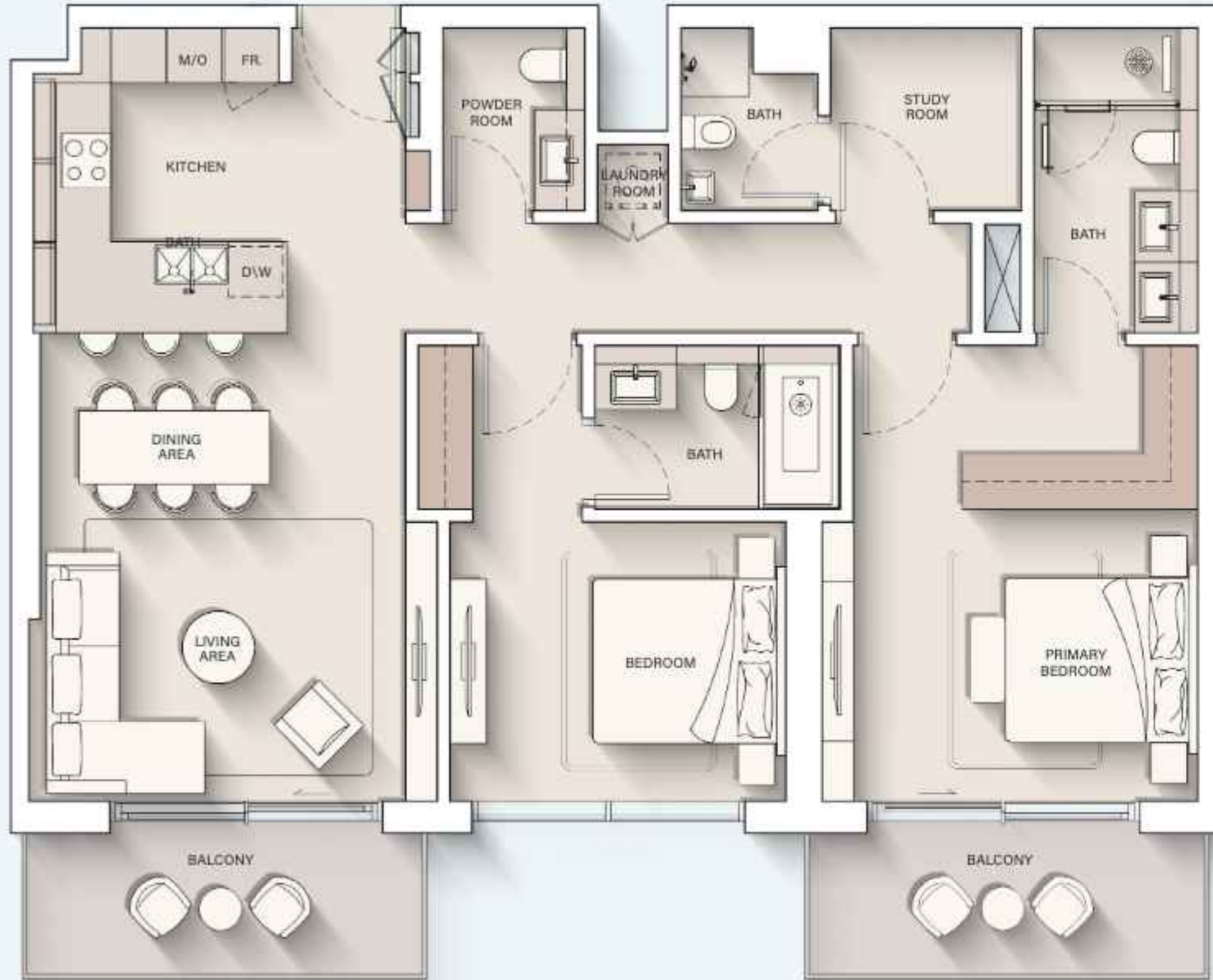


Internal Living Area : 1017.94 sq. ft

Outdoor Living Area : 154.35 sq. ft

Total Living Area : 1172.30 sq. ft

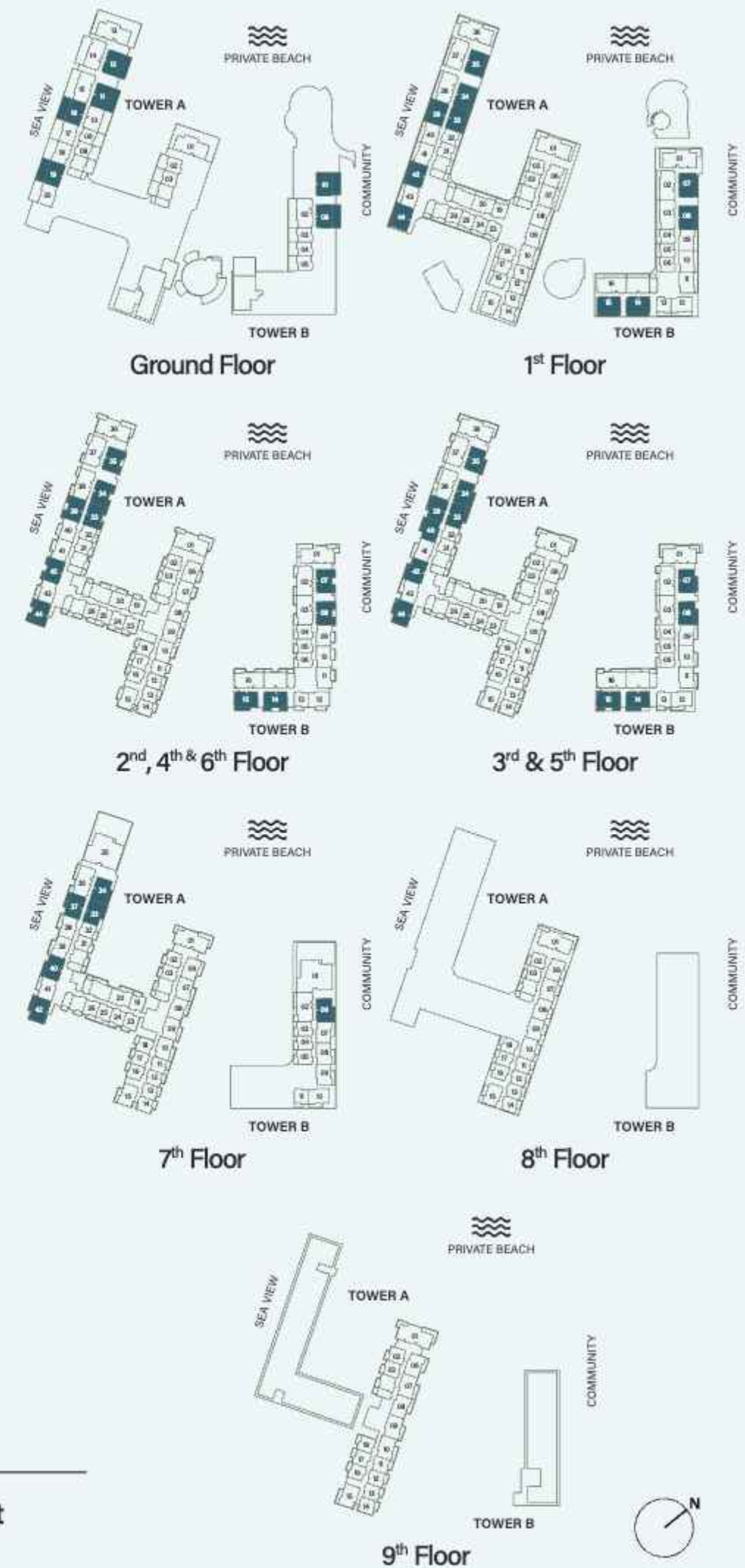
2 - BEDROOM + S



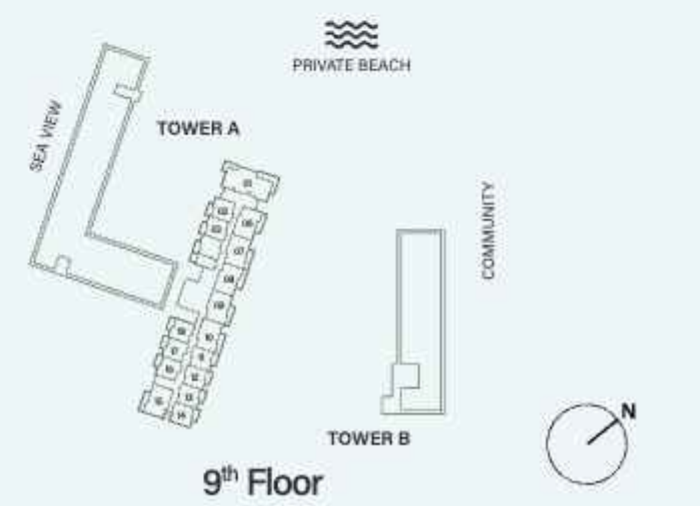
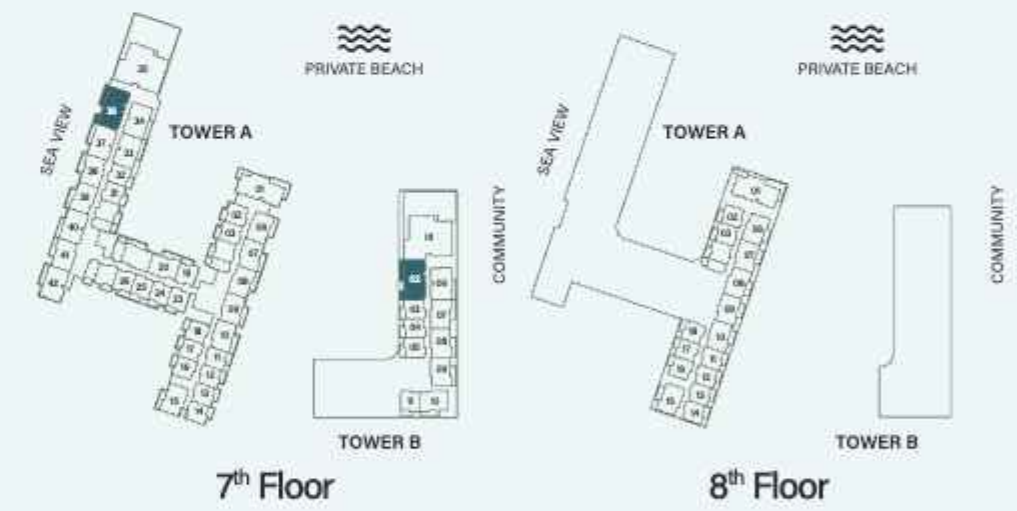
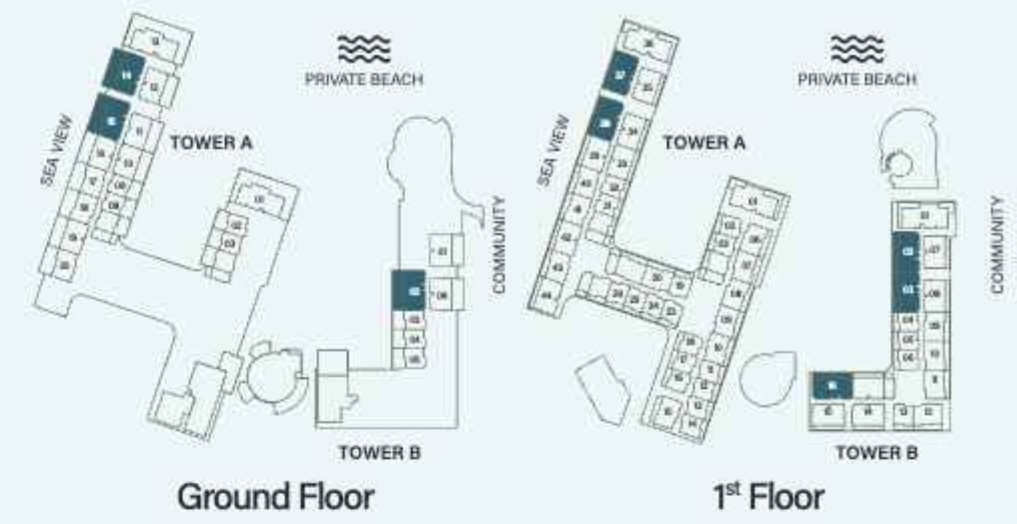
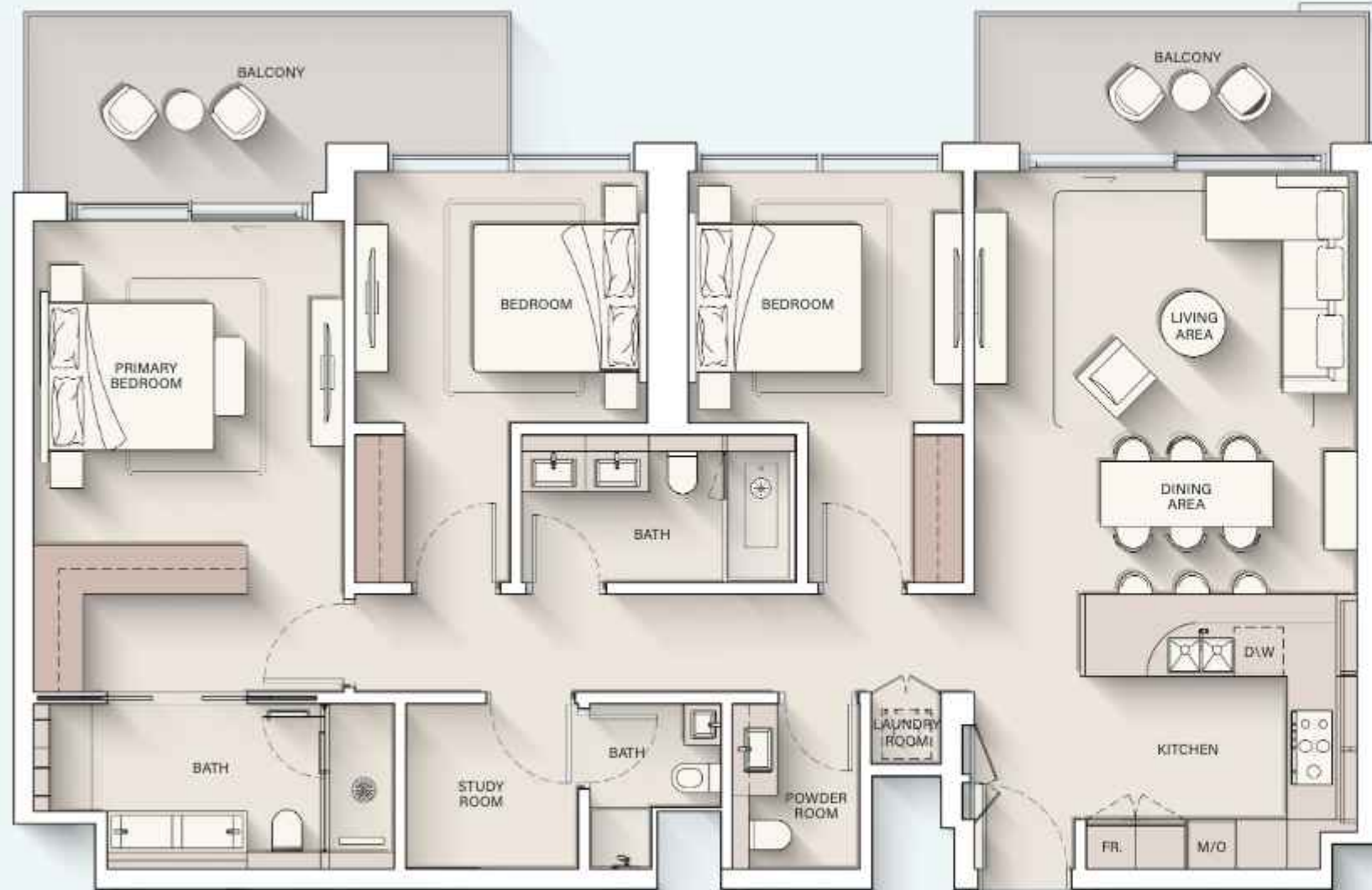
Internal Living Area : 1231.07 sq. ft

Outdoor Living Area : 168.13 sq. ft

Total Living Area : 1399.20 sq. ft



3 - BEDROOM

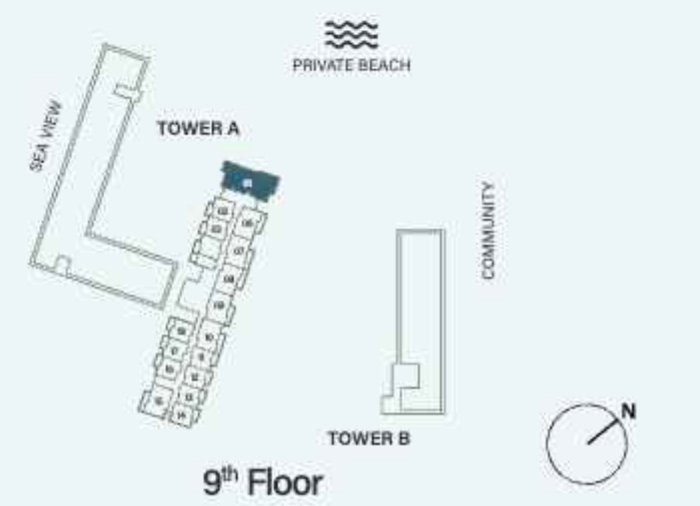
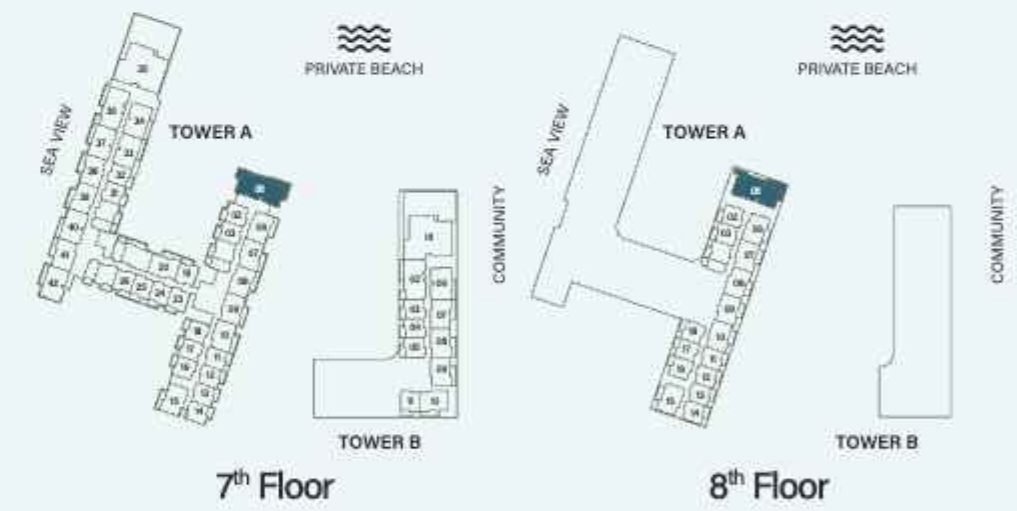
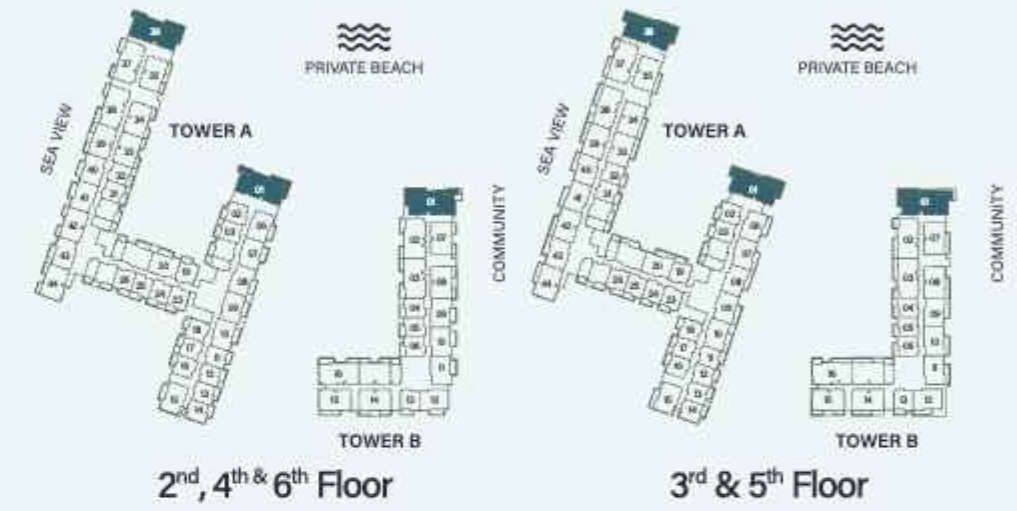
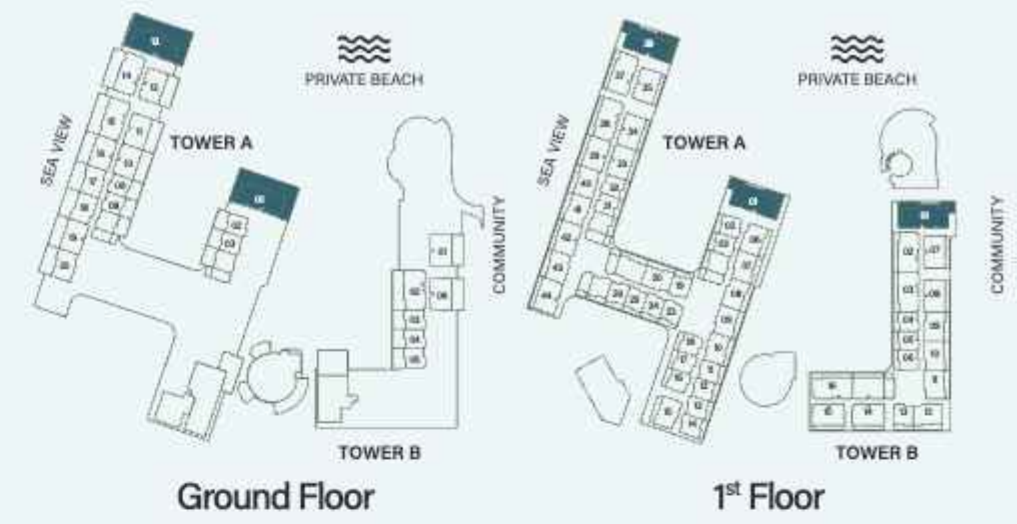
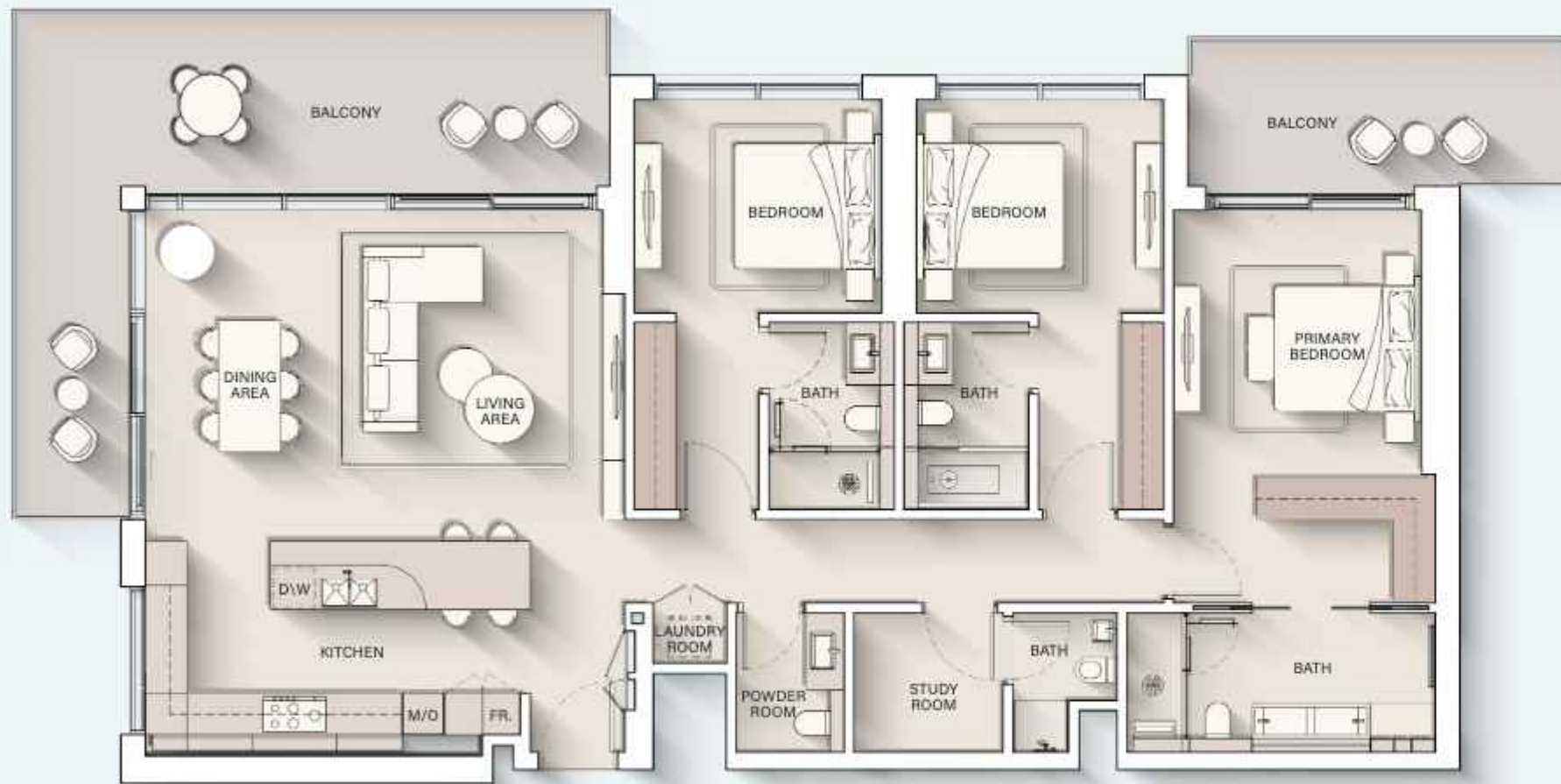


Internal Living Area : 1500.17 sq. ft

Outdoor Living Area : 230.46 sq. ft

Total Living Area : 1730.62 sq. ft

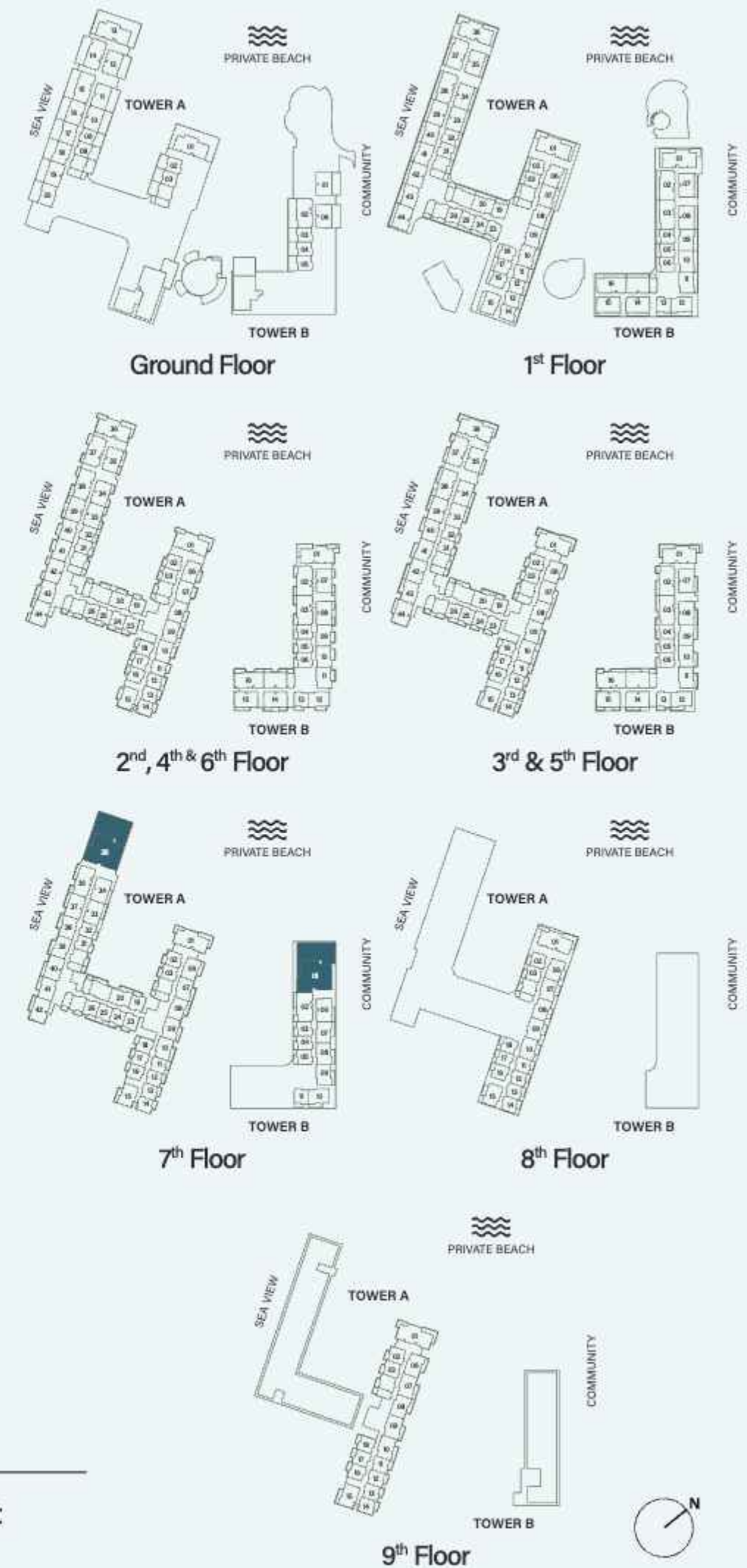
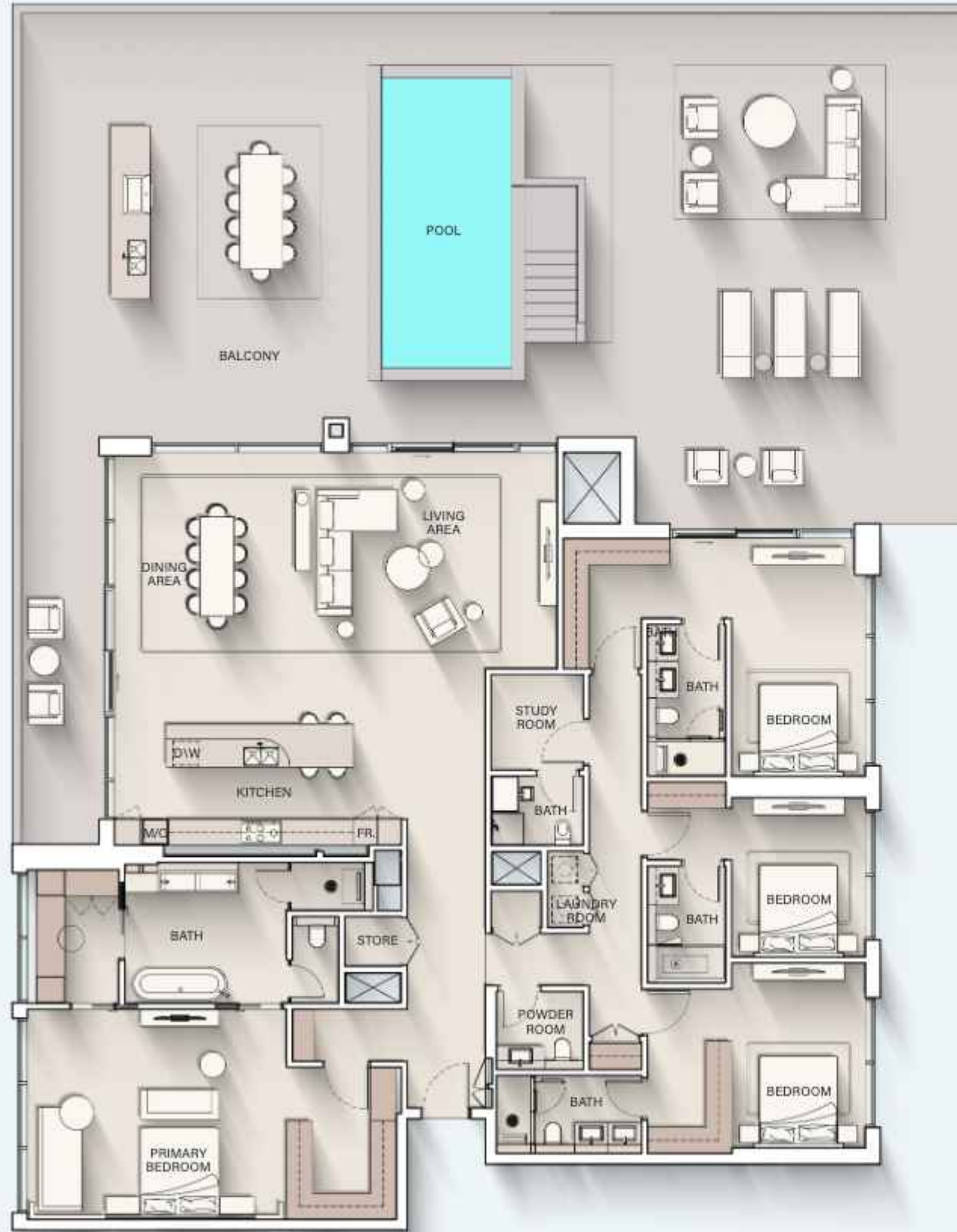
3 - BEDROOM DELUXE



Internal Living Area : 1771.85 sq. ft Outdoor Living Area : 477.06 sq. ft Total Living Area : 2248.90 sq. ft



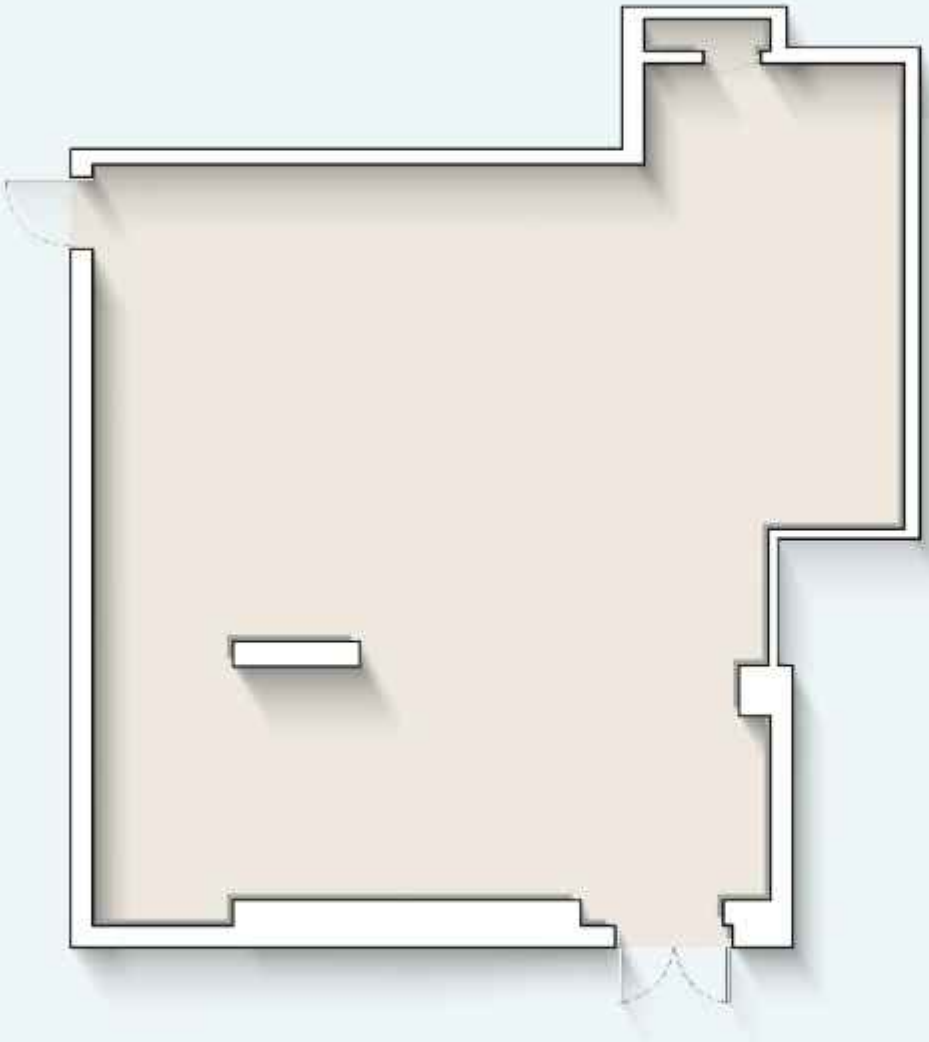
4 - BEDROOM PENTHOUSE



Internal Living Area : 3222.50 sq. ft Outdoor Living Area : 2663.64 sq. ft Total Living Area : 5886.14 sq. ft



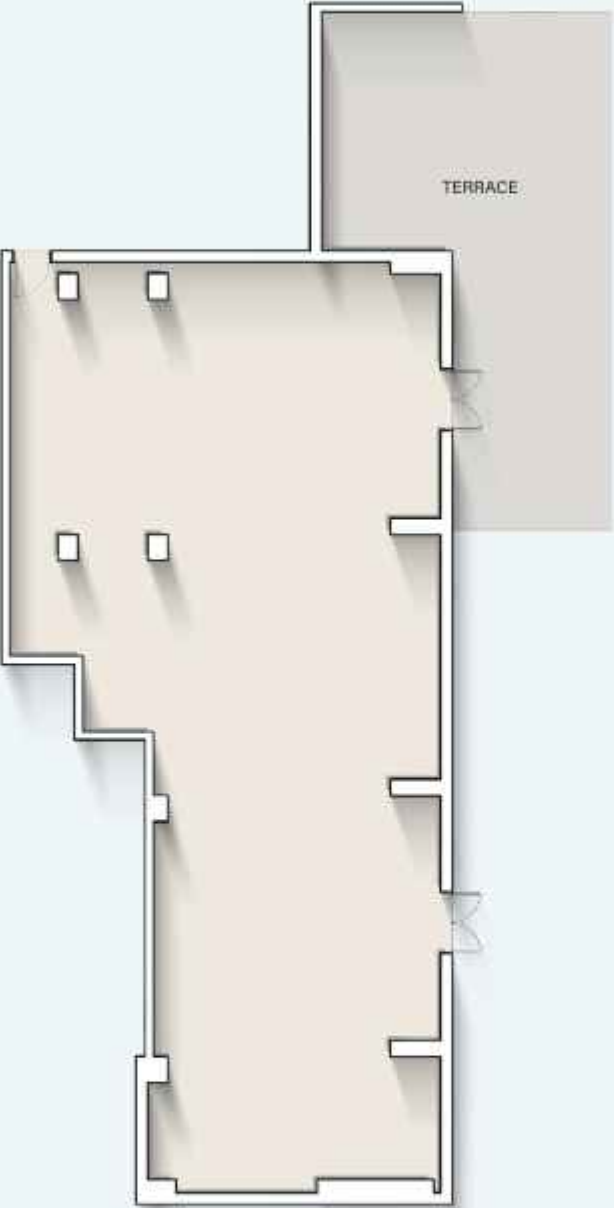
RETAIL - 1



Internal Living Area : 1695.85 sq. ft



RETAIL - 2



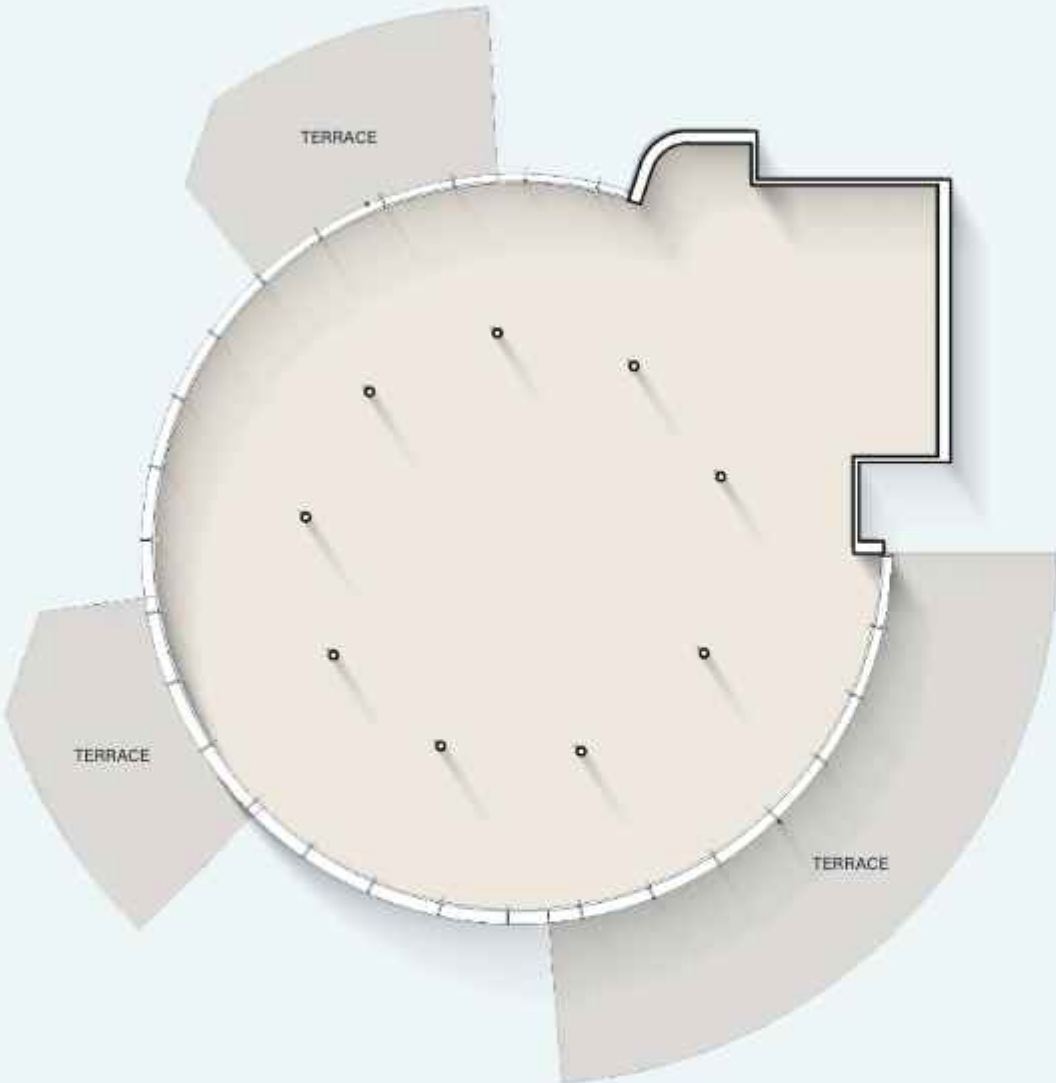
Internal Living Area : **3346.93 sq. ft**

Outdoor Living Area : **1151.42 sq. ft**

Total Living Area : **4498.35 sq. ft**



RETAIL - 3



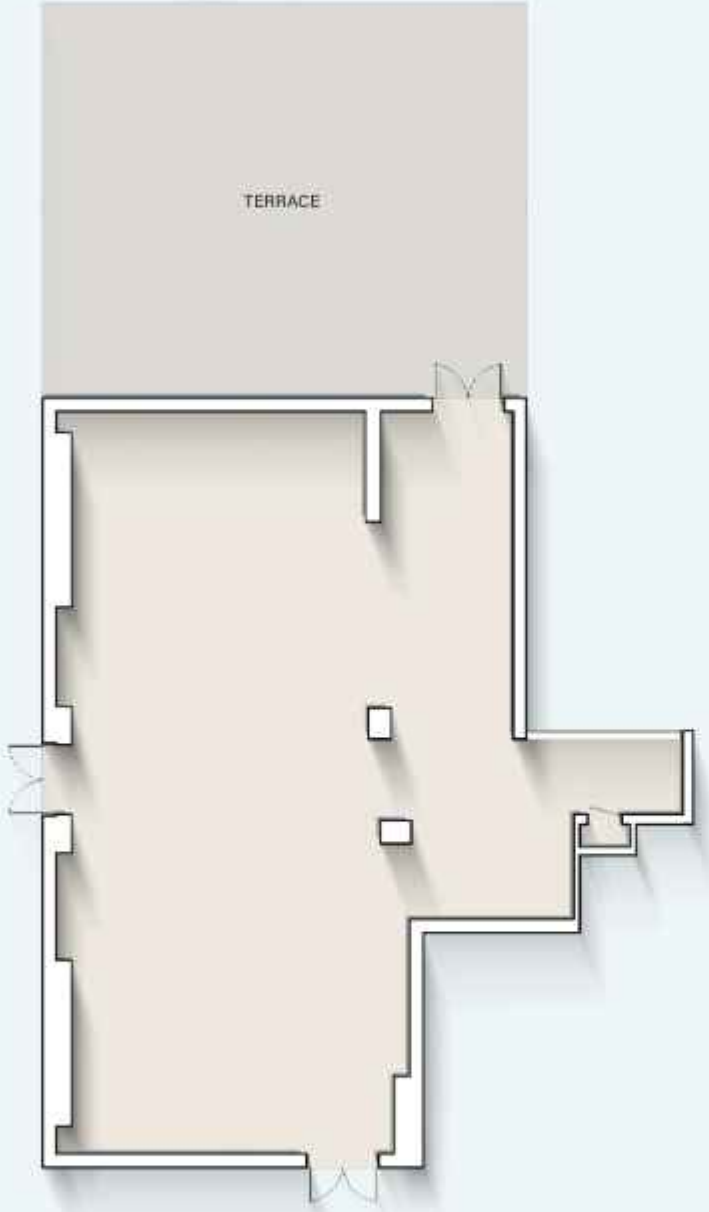
Internal Living Area : **3913.11 sq. ft**

Outdoor Living Area : **1845.90 sq. ft**

Total Living Area : **5759.01 sq. ft**



RETAIL - 4



Internal Living Area : **2535.12 sq. ft**

Outdoor Living Area : **1393.71 sq. ft**

Total Living Area : **3928.83 sq. ft**

