



ONE
PARK
SQUARE
BY IMAN



Inspired By Desert Sand,
Perfected By Nature



Building Legacies since 2016

- | | | | | | | | | |
|----|------|---------------------|----|------|-------------------|----|------|--|
| 01 | 2016 | OXFORD VILLAS | 06 | 2022 | OXFORD TERRACES | 11 | 2023 | GARDENS 2 |
| 02 | 2017 | OXFORD RESIDENCES | 07 | 2022 | OXFORD TERRACES 2 | 12 | 2024 | ONE PARK CENTRAL |
| 03 | 2019 | OXFORD RESIDENCES 2 | 08 | 2022 | THE GROVE | 13 | 2024 | ONE SKY PARK
FEATURED BY VERSACE CERAMICS |
| 04 | 2021 | OXFORD BOULEVARD | 09 | 2023 | OXFORD GARDENS | | | |
| 05 | 2022 | OXFORD 212 | 10 | 2023 | 10 OXFORD | | | |

One Sky Park

One Park Central

The Grove

10 Oxford

Oxford 212





Dubai, The Heartbeat of Modern Living

A marvel of modern ambition and timeless allure, Dubai shines as a sanctuary for those seeking a refined lifestyle paired with peace of mind. With world-class infrastructure, unrivaled urban planning, and a focus on safety, this city promises an experience where comfort and security blend seamlessly. Strategically positioned at the confluence of Europe, Asia, and Africa, Dubai is a magnet for global culture, offering an enriching, cosmopolitan lifestyle amidst breathtaking architecture and vibrant communities. In Dubai, you'll find not just a home, but a dynamic, ever-evolving lifestyle designed to inspire and elevate.



JVC: The Urban Epicenter

Jumeirah Village Circle (JVC) offers a harmonious blend of community living and modern convenience, making it one of Dubai's most sought-after neighborhoods. Surrounded by parks, reputable schools, and top-tier medical facilities, JVC provides everything needed for a balanced lifestyle. Its close proximity to key motorways ensures seamless connectivity across the city.

An up-and-coming destination, JVC combines contemporary infrastructure with a welcoming, family-oriented atmosphere. For prospective homebuyers, this thriving community represents an ideal choice, promising both a sense of belonging and a sound investment in Dubai's dynamic real estate landscape.

17min

Bluewaters
Island

18min

Expo
City

20min

Palm
Jumeirah

20min

Mall of the
Emirates

25min

Dubai
Mall

30min

Al Maktoum
Intl Airport

30min

Dubai Intl
Airport
(DXB)

36min

Palm
Jebel Ali





ONE
PARK
SQUARE
BY IMAN

Inspired By Desert Sand, Perfected By Nature





Design Strategy

One Park Square draws its essence from the serene flow of nature, capturing the gentle movement of water and the timeless beauty of the desert. The architecture flows gracefully, with sleek lines and refined finishes that echo the elegance of natural landscapes. Infused with organic elements, the amenities within One Park Square create an immersive experience, where every corner invites residents to feel connected to both luxury and nature's tranquil rhythms.

24th Floor

Penthouse

16th Floor

Duplex Apartment

12th Floor

Duplex Apartment

11th Floor

Indoor Amenities Floor

8th Floor

Duplex Apartment

1st Floor

Amenities Floor

5 Podium Floors

Parking

Ground Floor

Expansive Entrance Lobby, Retail Shops, Lift Lobby



Building Configuration

Exclusive amenities are combined in two zones and celebrated in a protruding structural expression. The building facade for duplexes has been designed to include a pool, while the 24th floor features exquisitely designed penthouses.

Featured Amenities



40M LEISURE POOL



KIDS POOL



CLUBHOUSE



SAUNA STEAM ROOM



JUNGLE GYM



JOGGING TRACK



KIDS SPLASH PAD



POOL BAR



SKATE PARK



FITNESS CENTER



BBQ LOUNGE



INDOOR KIDS PLAY AREA





THE EXPANSIVE LOBBY



THE EXPANSIVE LOBBY



THE LIVING ROOM



THE KITCHEN



THE BEDROOM



THE BATHROOM



DUPLEX APARTMENT

Nature's Touch In Every Amenity

One Park Square's amenities cater to every desire,
creating a setting where lifestyle flows into quiet elegance, offering only the finest in comfort and experience.



AMENITIES FLOOR



40M LEISURE POOL



FITNESS CENTER



JUNGLE GYM



INDOOR KIDS PLAY AREA



OUTDOOR KIDS PLAY AREA



CLUBHOUSE



YOGA ZONE



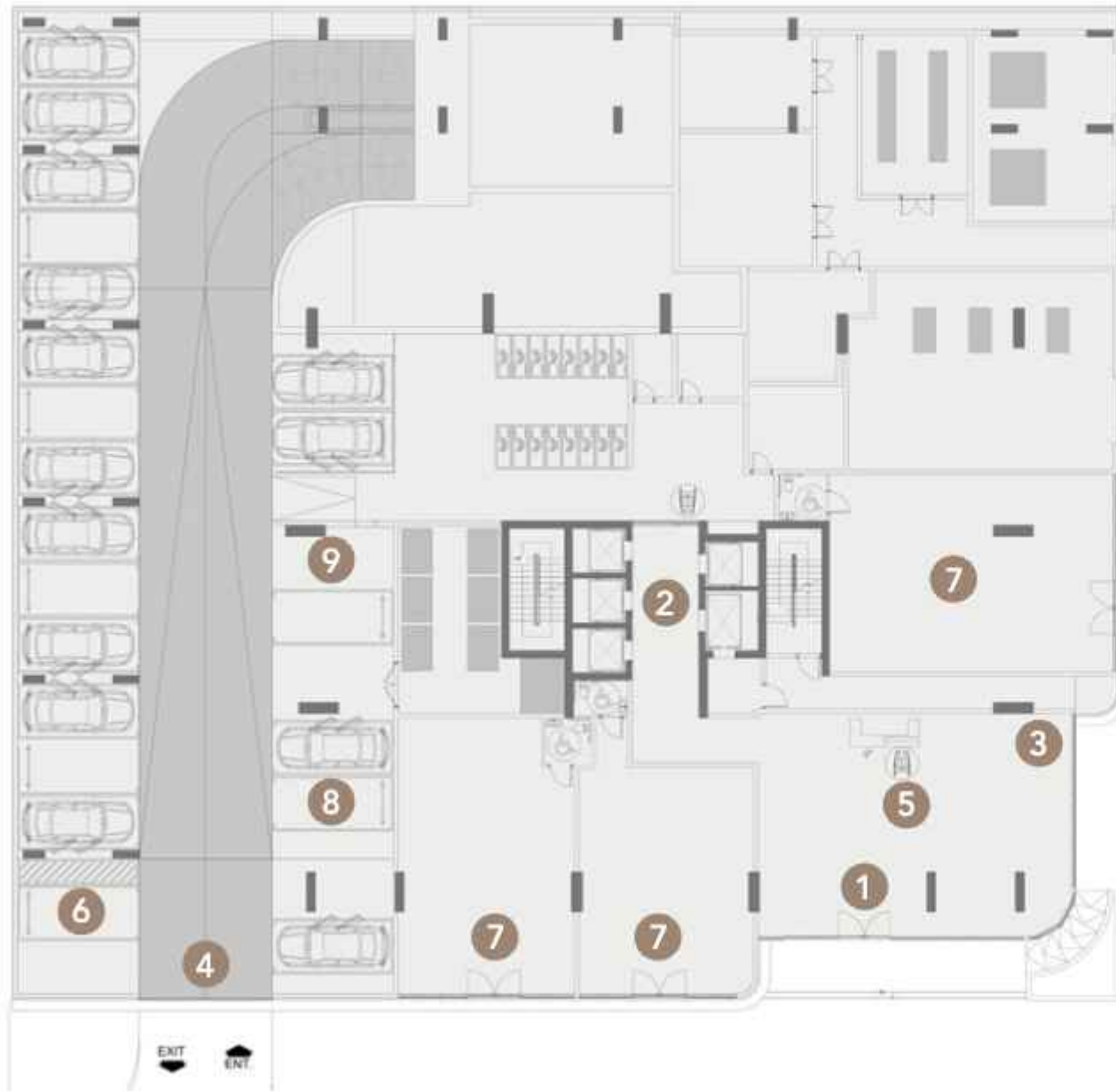
KIDS POOL & SPLASH PAD



BARBEQUE AREA



PET ZONE



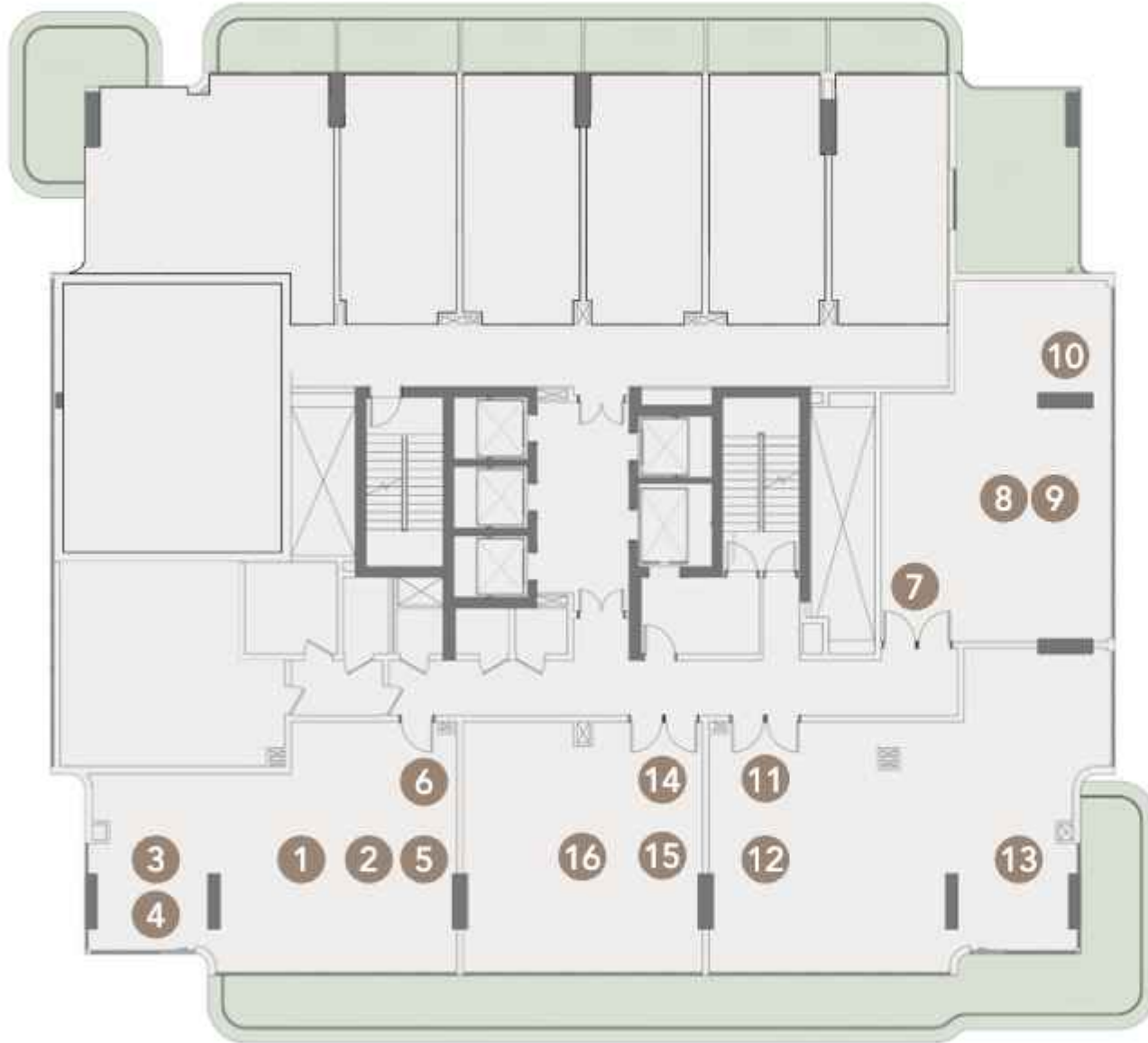
Ground Floor

- 1 Expansive Lobby
- 2 Lift Lobby
- 3 Lobby Lounge
- 4 Parking Entrance & Exit
- 5 Lobby Reception
- 6 People Of Determination Parking
- 7 Retail Units
- 8 Retail Parking
- 9 EV Charging Station



First Floor

- 1 Jungle Gym
- 2 Skate Park
- 3 Yoga Zone
- 4 Kids Splash Pad
- 5 Barbeque Area
- 6 Leisure Lounge
- 7 40M Leisure Pool
- 8 Sun Loungers
- 9 Pool Bar
- 10 Zen Garden
- 11 Kids Playground
- 12 Kids Pool
- 13 Sunken Seating
- 14 Outdoor Shower
- 15 Pet Zone
- 16 Jogging Track
- 17 Baja Shelf



11th Floor

- 1 Clubhouse
- 2 Pool Table
- 3 Arcade Zone
- 4 Table Tennis
- 5 Club Lounge
- 6 Coffee Bar & Kitchen
- 7 Sauna & Steam Room
- 8 Male Changing Room
- 9 Female Changing Room
- 10 Ice Therapy Room
- 11 Fitness Center
- 12 Cardio Zone
- 13 Strength Zone
- 14 Indoor Kids Play Area
- 15 Kid's Rock Climbing Wall
- 16 Kid's Ball Pool Slide

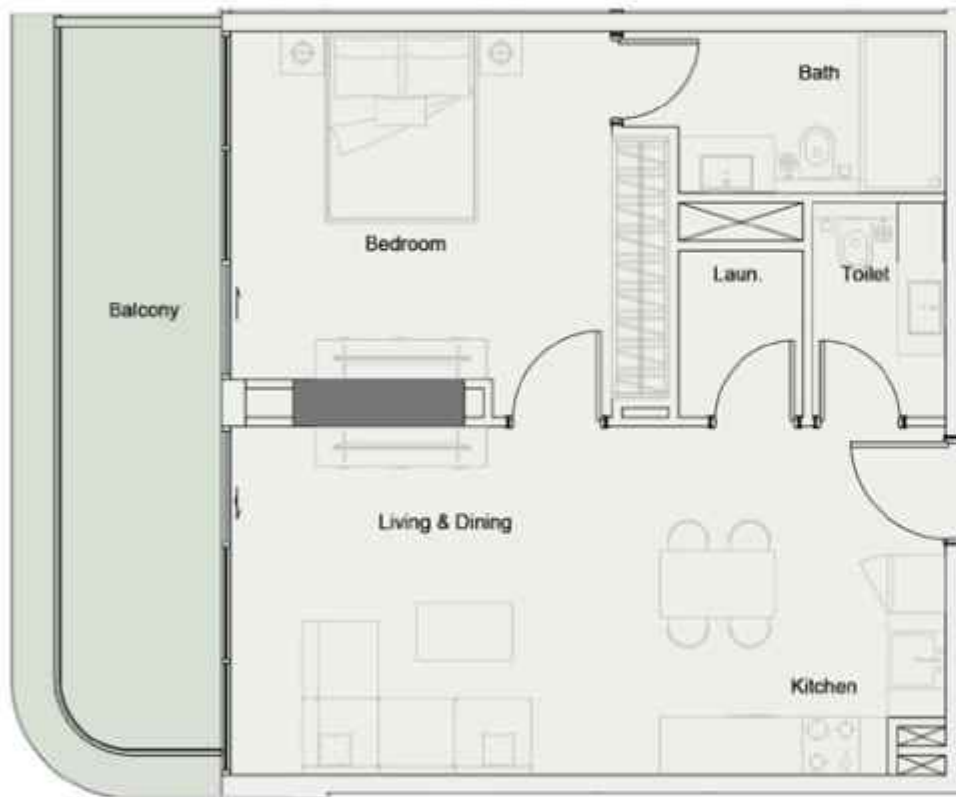


Studio

424 - 442 Sq.ft

Residential Starting Prices

From AED 725k onwards



1 Bedroom

744 - 813 Sq.ft

Residential Starting Prices

From AED 1.05M onwards

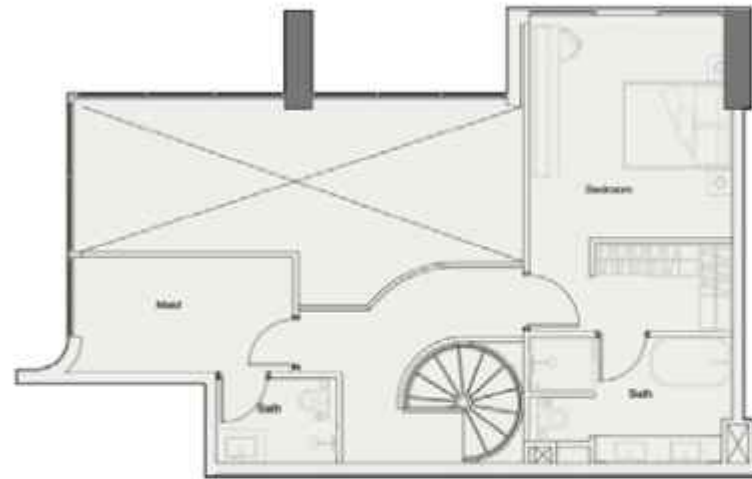


2 Bedroom

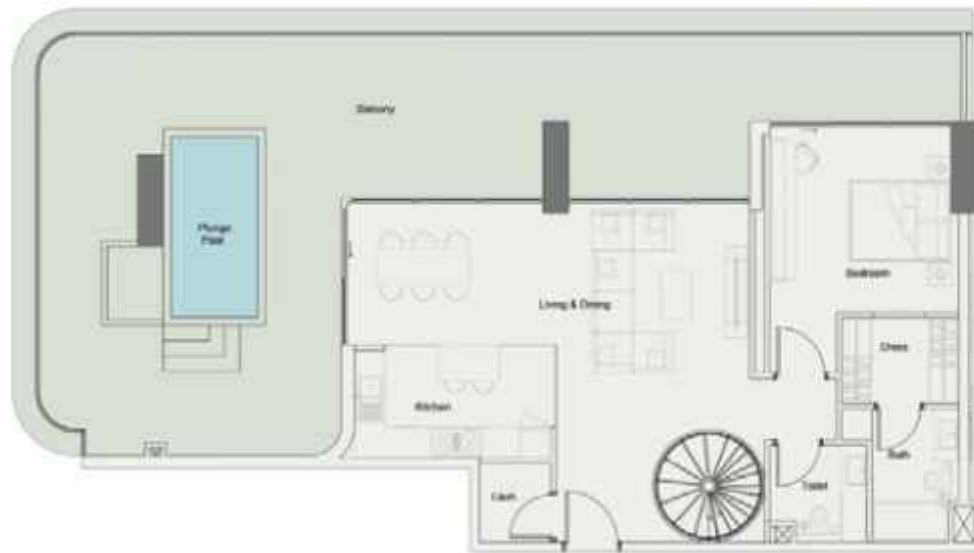
1085 - 1236 Sq.ft

Residential Starting Prices

From AED 1.58M onwards



2 Bedroom Duplex
2208 - 2440 Sq.ft



Residential Starting Prices
From AED 2.37M onwards



3 Bedroom Penthouse

3351 - 3544 Sq.ft

Residential Starting Prices

From AED 2.95M onwards

Payment Plan

20% on Booking

10% in 90 Days

10% on 20% Construction Completion

10% on 40% Construction Completion

10% on 60% Construction Completion

40% on Project Completion

Completion Date: **Q2 2028**

DLD Project NO: **3366**

Number Of Floors

G+5P+24 Floors

Units Breakdown

266

Residential
Apartments

03

Retail

Studios	107
1 Bedroom	115
2 Bedroom	34
2 Bedroom Duplex	6
3 Bedroom Penthouse	4



BY INAMI DEVELOPERS



ONE
PARK
SQUARE
BY IMAN