


BEACH
WALK
Grand

IMTIAZ

An aerial photograph of ocean waves, captured from a high angle. The water is a deep, dark blue, and the white foam of the waves is visible as they break. The text is centered in the upper half of the image, in a light, serif font. The overall mood is serene and elegant.

LIFE, ENRICHED BY
BEACH SIDE LIVING

A LIFE EMBRACED BY THE SEA



Tied to nature and inspired by luxury. Where all that you need is within arm's reach, at home. Live the dream with nothing held back. Welcome to a life where elegance, comfort, and community coexist. The good life begins here, and it's yours to embrace every day.

BEACH WALK *Grand*

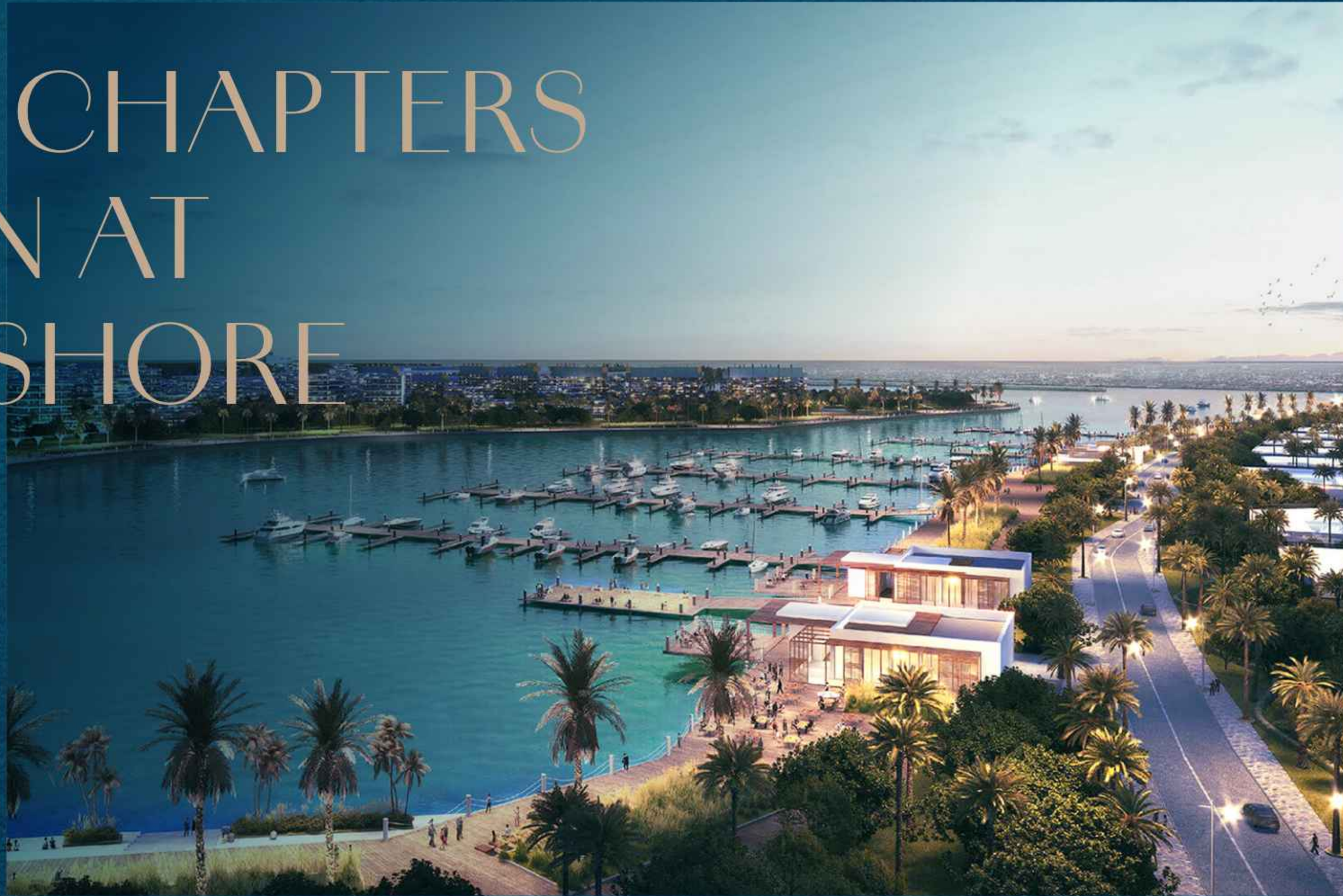




EXPERIENCE DUBAI ISLANDS

Five exquisite islands offer the pinnacle of luxury living. With 50 kilometers of pristine coastline, more than 30,000 exclusive residences, and world-class resorts, these vibrant islands blend coastal tranquility with urban convenience and connectivity. Every moment here invites you to embrace life, indulge in leisure, and bask in breathtaking natural beauty.

NEW CHAPTERS BEGIN AT THE SHORE



Breathtaking
Sunset Views



9 Marinas



21 km
Beachfront



86 Resorts &
Hotels



2 Golf Courses

Step into a bold new era of waterfront living, where every day brings a fresh start. With upscale retail, leisure, wellness, and cultural experiences, these islands invite you to embrace new possibilities and craft your next chapter by the water.

BEACH WALK *Grand*





COASTAL DREAMS UNFOLD



Aligned with Dubai's 2040 Vision, Dubai Islands offers a unique waterfront lifestyle that reflects the city's ambition to be the world's best place to live. This destination provides the best of both worlds—close to key landmarks yet distant enough to preserve its island charm.



LIFE AT THE WATER'S EDGE



Living by the water has long been a symbol of wealth, privilege, and exclusivity. Waterfront properties represent more than just prime real estate—they embody a connection to nature that few can access. Beach Walk projects by Imtiaz Developments offer a rare opportunity to experience this unparalleled lifestyle.



LUXURIOUSLY DESIGNED, FULLY FURNISHED



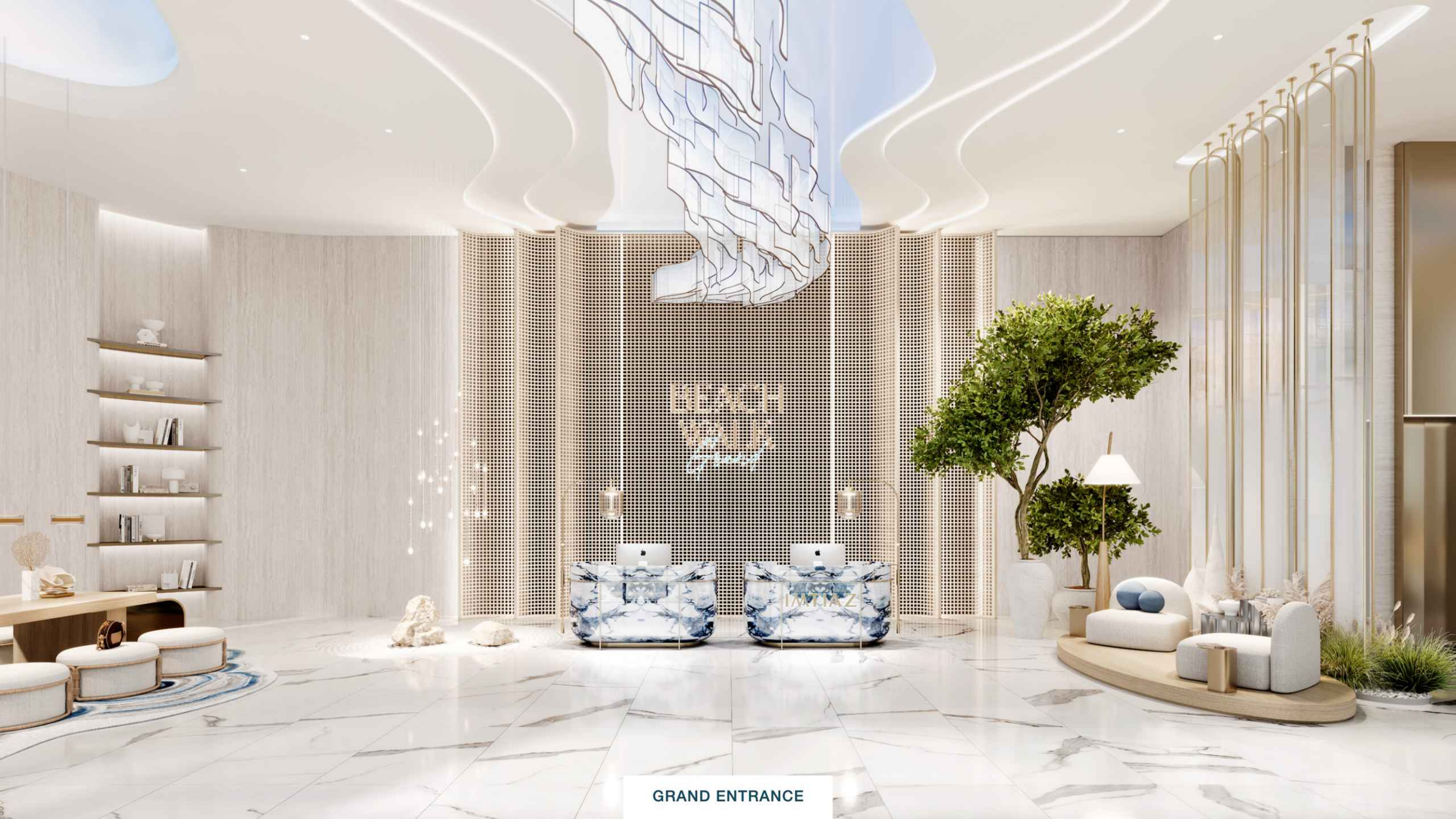
Every residence at Beach Walk Grand comes fully furnished with custom-designed furniture. The lifestyle-focused design extends to the heart of the home, with a fully fitted kitchen featuring top European brands, combining functionality with sophistication. Enhanced by smart home systems, each apartment offers effortless control over your living space, ensuring convenience and comfort at your fingertips.

Miele

GISSI


Villeroy & Boch
1748

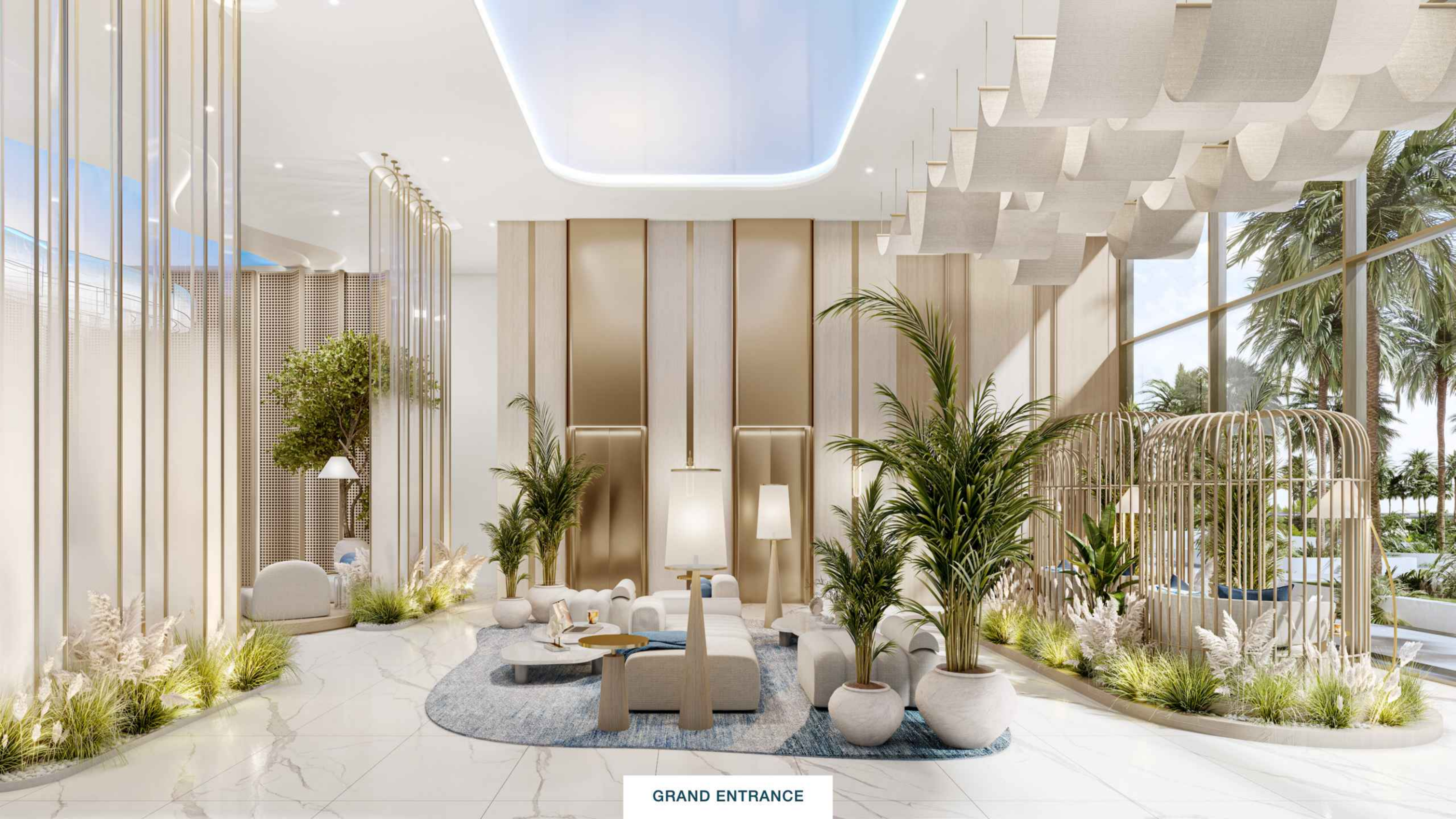
alexa



GRAND ENTRANCE



GRAND ENTRANCE

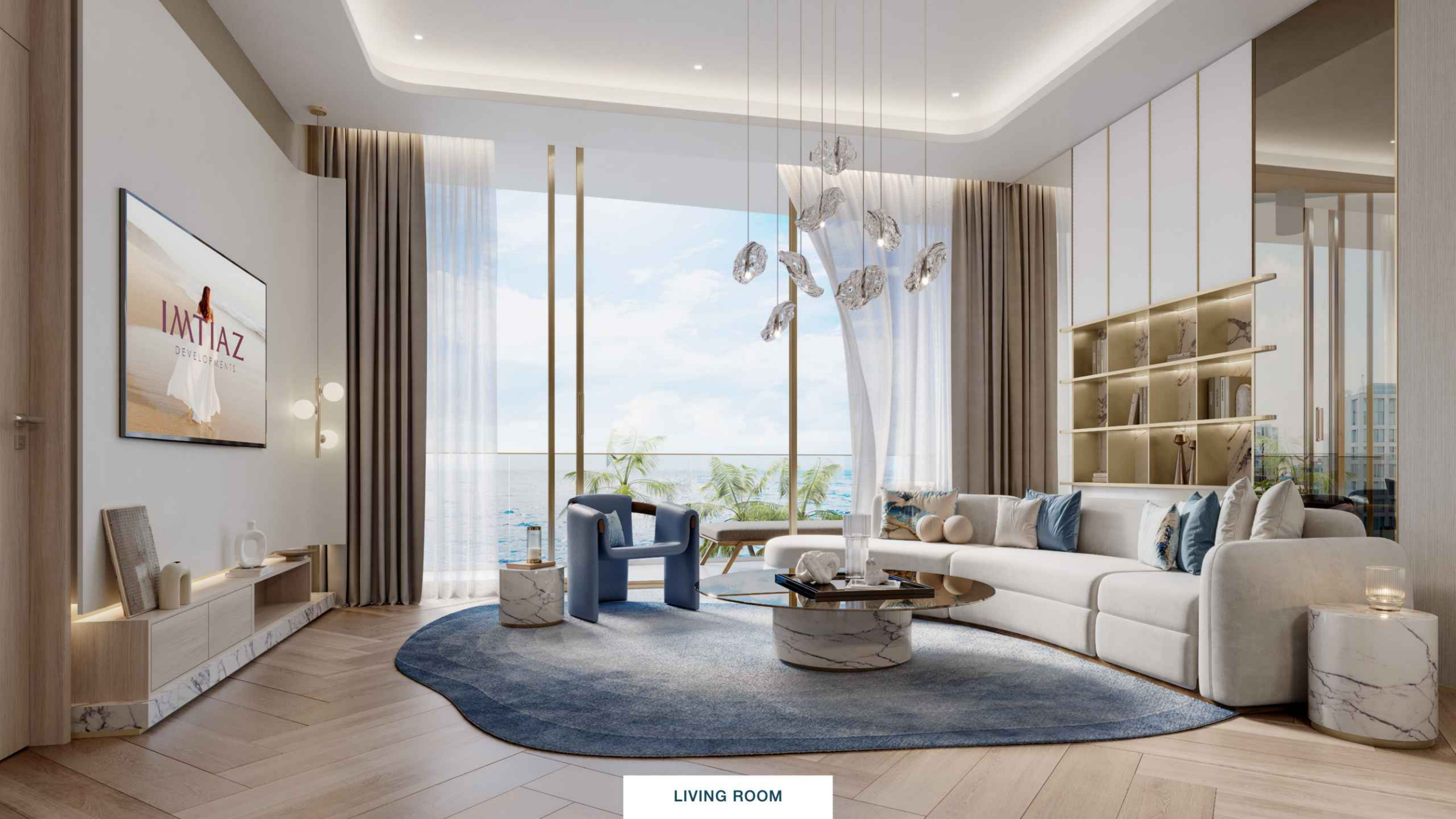


GRAND ENTRANCE

A WORLD OF WONDER AT YOUR DOORSTEP



Discover a lifestyle where every day unfolds with awe. At your doorstep lies a world of beauty, luxury, and endless possibilities—designed to inspire and captivate. From tranquil moments to thrilling experiences, this is where wonder becomes a part of everyday living.



LIVING ROOM



LIVING ROOM



BEDROOM



BEDROOM CLOSET:

Ample storage with sleek finishes, organised shelving, and built-in lighting, combining functionality and style effortlessly.



WELLNESS RETREAT:

Elegant fixtures, ambient lighting, and soothing tones, providing a serene space for relaxation and rejuvenation every day.



STUDY ROOM

LUXURIOUS PENTHOUSE



The penthouses offer a private retreat for those who value peace, space, and exclusivity. Positioned above the coastline, these residences feature open layouts, private terraces, high ceilings, and generous balconies that create a bright, airy ambiance with uninterrupted ocean views.



PENTHOUSE - LIVING ROOM



PENTHOUSE - LIVING ROOM



PENTHOUSE - KITCHEN AREA



PENTHOUSE - KITCHEN AREA



PENTHOUSE - MASTER BEDROOM



PENTHOUSE - MASTER BEDROOM

FAMILY FRIENDLY AMENITIES

LUXURY POOL:

A stunning swimming pool with infinity edges, mosaic tiles, and soft ambient lighting, providing a serene space for relaxation and leisure.

INDOOR GYM:

Outfitted with state-of-the-art equipment and sleek interiors, the gym offers an inspiring environment for high-performance workouts and tailored fitness routines.

CLUB HOUSE:

Featuring modern design, premium amenities, and cosy lounges, the clubhouse is perfect for socialising, unwinding, or hosting private events.

PEACFUL PERCH:

Take in breathtaking views with stylish seating and gentle ambient lighting, offering the ideal setting for relaxation or elegant gatherings under the sky.



ROOFTOP AMENITIES

INFINITY POOL:

Immerse yourself in the tranquillity of the rooftop infinity pool, featuring sleek mosaic tiles and ambient lighting. This serene oasis offers the perfect escape for relaxation, high above the bustle of the city.

ROOFTOP LOUNGE:

Unwind at the stylish rooftop lounge with panoramic views and a vibrant atmosphere. Whether for social gatherings, quiet relaxation, or enjoying cocktails at sunset, this space is designed to elevate every moment.



UNWIND, CONNECT, BELONG



A welcoming space designed for relaxation and social interaction. With dedicated social areas, recreational facilities, and organised events, it fosters meaningful connections and a sense of community. Whether gathering with neighbours, enjoying games, or hosting private events, the clubhouse becomes a central hub for enhancing everyday living.



CLUBHOUSE




CLUBHOUSE

STRENGTH BECOMES A LIFESTYLE



A dynamic environment for fitness enthusiasts, featuring state-of-the-art equipment, personal training options, and a supportive community.



FITNESS
IS NOT A DESTINATION
IT IS A WAY OF LIFE

INDOOR GYM



INDOOR GYM

UNIT TYPES AND SIZES



APARTMENTS

- 1 Bedroom - 54 Units
- 2 Bedrooms - 54 Units
- 3 Bedroom Penthouse - 4 Units

SIZE RANGE

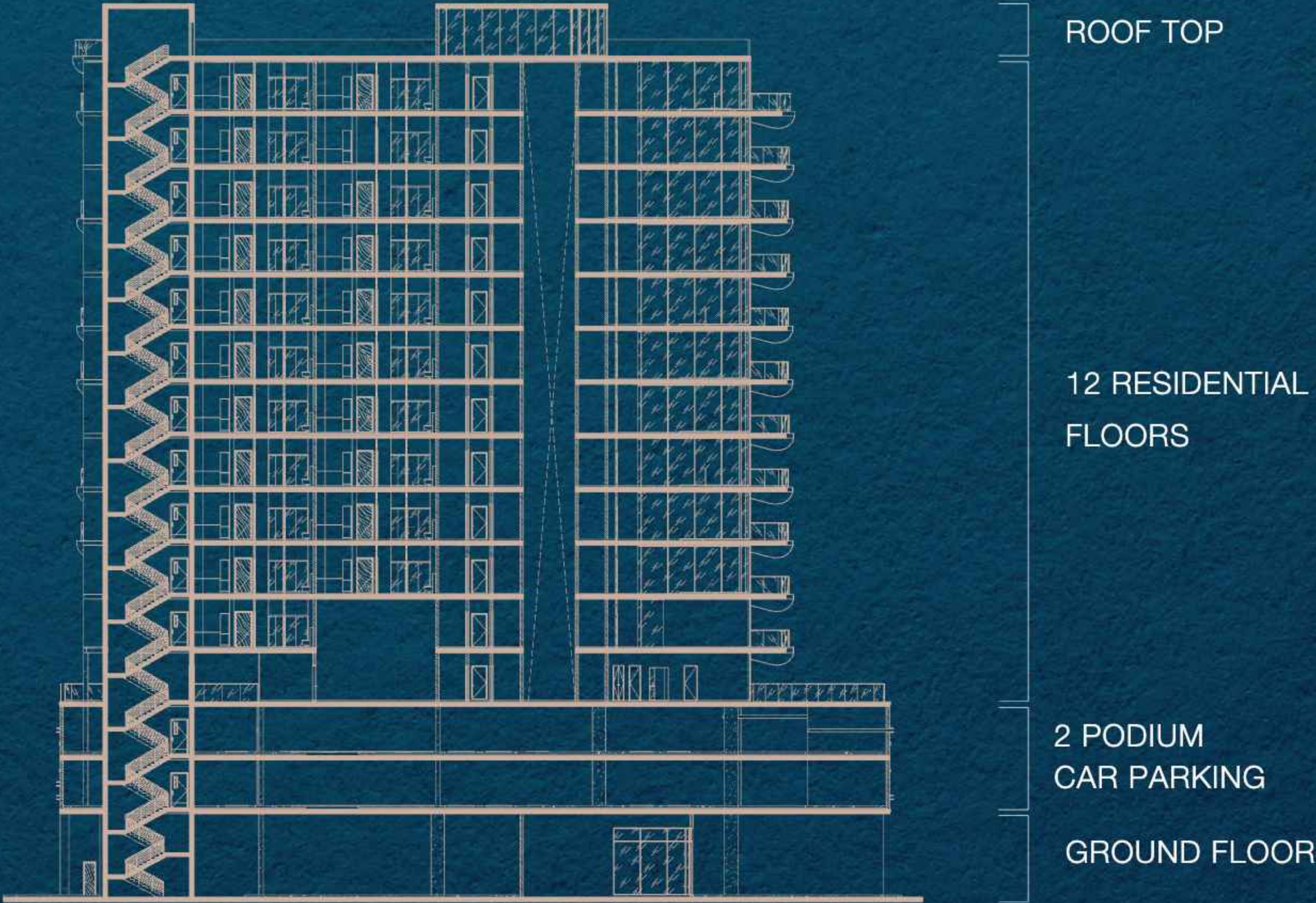
- From 850 sq. ft to 1,252 sq. ft
- From 1,000 sq. ft to 1,588 sq. ft
- From 3,600 sq. ft to 3,900 sq. ft

LOCATION OVERVIEW

Infinity Bridge	5 min
Waterfront Market	5 min
Nearest Metro Station	8 min
Al Mamzar Beach	8 min
Dubai International Airport	12 min
The Elite English School	12 min
Cruise Terminal	15 min
La Mer Beach	15 min
Jumeirah Public Beach	20 min
Dubai Frame	20 min
Downtown Dubai	24 min
Dubai Mall	24 min



CONFIGURATION



G + 2 PODIUM CAR PARKING + 12 RESIDENTIAL FLOORS + RF RESIDENTIAL

IMTIAZ

A JOURNEY TO PERFECTION

imtiaz.ae | info@imtiaz.ae

800 IMTIAZ (468429)