

FLOOR PLANS

# MARINA PLACE 2

RASHID YACHTS & MARINA

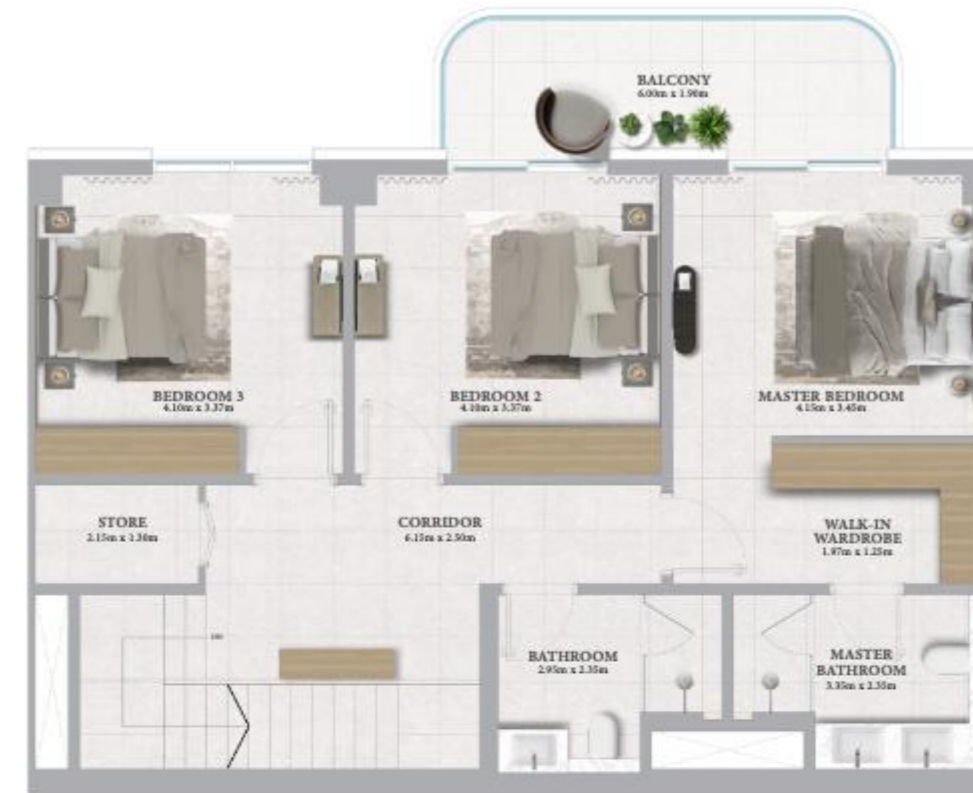
EMAAR

# MARINA PLACE 2

RASHID YACHTS & MARINA

## 3 BEDROOM TOWNHOUSE

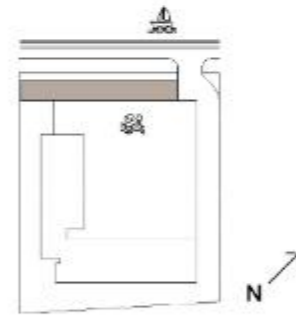
UNITS	01,02		UNITS		03
<b>GROUND LEVEL</b>			<b>GROUND LEVEL</b>		
SUITE AREA	100.05 SQ.M.	1076.93 SQ.FT.	SUITE AREA	100.21 SQ.M.	1078.65 SQ.FT.
TERRACE AREA	24.51 SQ.M.	263.82 SQ.FT.	TERRACE AREA	25.49 SQ.M.	274.37 SQ.FT.
<b>PODIUM LEVEL</b>			<b>PODIUM LEVEL</b>		
SUITE AREA	100.54 SQ.M.	1082.20 SQ.FT.	SUITE AREA	100.70 SQ.M.	1083.93 SQ.FT.
BALCONY AREA	11.16 SQ.M.	120.13 SQ.FT.	BALCONY AREA	11.16 SQ.M.	120.13 SQ.FT.
<b>TOTAL</b>			<b>TOTAL</b>		
SUITE AREA	200.59 SQ.M.	2159.13 SQ.FT.	SUITE AREA	200.91 SQ.M.	2162.58 SQ.FT.
BALCONY AREA	35.67 SQ.M.	383.95 SQ.FT.	BALCONY AREA	36.65 SQ.M.	394.50 SQ.FT.
<b>TOTAL AREA</b>	<b>236.26 SQ.M.</b>	<b>2543.08SQ.FT.</b>	<b>TOTAL AREA</b>	<b>237.56 SQ.M.</b>	<b>2557.08 SQ.FT.</b>



### KEY SECTION



### KEY LAYOUT



### KEY PLAN



GROUND LEVEL



PODIUM LEVEL



FLOOR PLAN 1. All dimensions are in imperial and metric, and measured from finish to finish excluding construction tolerances. 2. All materials, dimensions, and drawings are approximate only. 3. Information is subject to change without notice, at developer's absolute discretion. 4. Actual area may vary from the stated area. 5. Drawings not to scale. 6. All images used are for illustrative purposes only and do not represent the actual size, features, specifications, fittings, and furnishings. 7. The developer reserves the right to make revisions / alterations, at its absolute discretion, without any liability whatsoever.

# MARINA PLACE 2

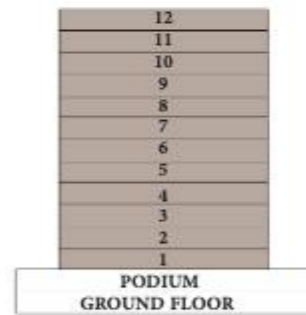
RASHID YACHTS & MARINA

## 1 BEDROOM - 1A

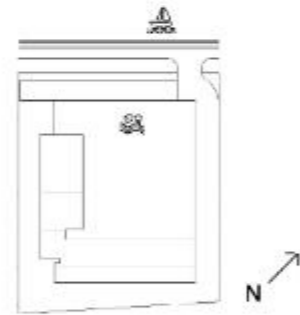
UNITS	107, 108, 207, 208, 216, 307, 308, 316, 407, 408, 416, 507, 508, 516, 607, 608, 616, 707, 708, 716, 807, 808, 816, 907, 908, 916, 1007, 1008, 1016, 1107, 1108, 1207, 1208	
SUITE AREA	66.47 SQ.M.	715.48 SQ.FT.
BALCONY AREA	7.96 SQ.M.	85.68 SQ.FT.
TOTAL AREA	74.43 SQ.M.	801.16 SQ.FT.

UNITS	105, 112, 205, 212, 305, 312, 405, 412, 505, 512, 605, 612, 705, 712, 805, 812, 905, 912, 1005, 1012, 1105, 1205	
SUITE AREA	68.06 SQ.M.	732.59 SQ.FT.
BALCONY AREA	7.96 SQ.M.	85.68 SQ.FT.
TOTAL AREA	76.02 SQ.M.	818.27 SQ.FT.

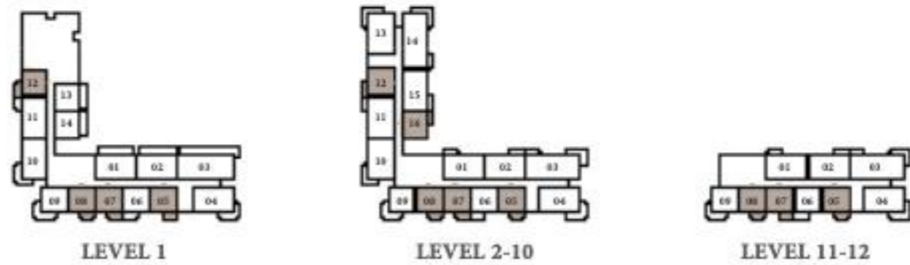
### KEY SECTION



### KEY LAYOUT



### KEY PLAN



FLOOR PLAN 1. All dimensions are in imperial and metric, and measured from finish to finish excluding construction tolerances. 2. All materials, dimensions, and drawings are approximate only. 3. Information is subject to change without notice, at developer's absolute discretion. 4. Actual area may vary from the stated area. 5. Drawings not to scale. 6. All images used are for illustrative purposes only and do not represent the actual size, features, specifications, fittings, and furnishings. 7. The developer reserves the right to make revisions / alterations, at it's absolute discretion, without any liability whatsoever.

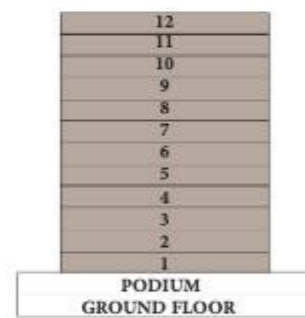
# MARINA PLACE 2

RASHID YACHTS & MARINA

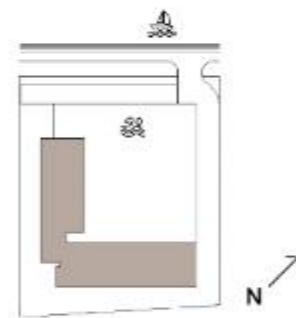
## 1 BEDROOM - 1B

UNITS	106, 206, 306, 406, 506, 606, 706, 806, 906, 1006, 1106, 1206	
SUITE AREA	66.47 SQ.M.	715.48 SQ.FT.
BALCONY AREA	7.96 SQ.M.	85.68 SQ.FT.
TOTAL AREA	74.43 SQ.M.	801.16 SQ.FT.

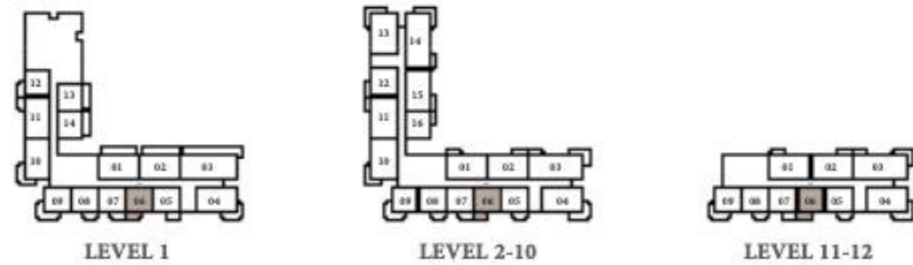
### KEY SECTION



### KEY LAYOUT



### KEY PLAN



FLOOR PLAN 1. All dimensions are in imperial and metric, and measured from finish to finish excluding construction tolerances. 2. All materials, dimensions, and drawings are approximate only. 3. Information is subject to change without notice, at developer's absolute discretion. 4. Actual area may vary from the stated area. 5. Drawings not to scale. 6. All images used are for illustrative purposes only and do not represent the actual size, features, specifications, fittings, and furnishings. 7. The developer reserves the right to make revisions / alterations, at its absolute discretion, without any liability whatsoever.

EMAAR

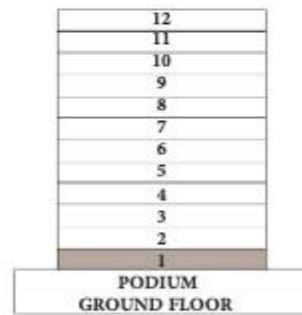
# MARINA PLACE 2

RASHID YACHTS & MARINA

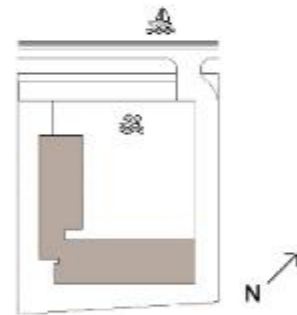
## 1 BEDROOM - 1C

UNITS	114	
SUITE AREA	66.47 SQ.M.	715.48 SQ.FT.
TERRACE AREA	18.16 SQ.M.	195.47 SQ.FT.
<b>TOTAL AREA</b>	<b>84.63 SQ.M.</b>	<b>910.95 SQ.FT.</b>

### KEY SECTION



### KEY LAYOUT



### KEY PLAN



FLOOR PLAN 1. All dimensions are in imperial and metric, and measured from finish to finish excluding construction tolerances. 2. All materials, dimensions, and drawings are approximate only. 3. Information is subject to change without notice, at developer's absolute discretion. 4. Actual area may vary from the stated area. 5. Drawings not to scale. 6. All images used are for illustrative purposes only and do not represent the actual size, features, specifications, fittings, and furnishings. 7. The developer reserves the right to make revisions / alterations, at it's absolute discretion, without any liability whatsoever.

EMAAR

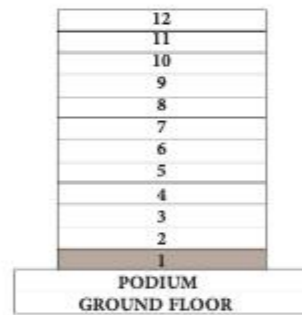
# MARINA PLACE 2

RASHID YACHTS & MARINA

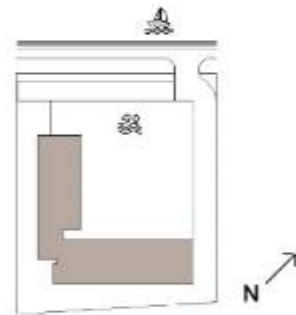
## 1 BEDROOM - 1D

UNITS	113	
SUITE AREA	66.47 SQ.M.	715.48 SQ.FT.
TERRACE AREA	18.16 SQ.M.	195.47 SQ.FT.
<b>TOTAL AREA</b>	<b>84.63 SQ.M.</b>	<b>910.95 SQ.FT.</b>

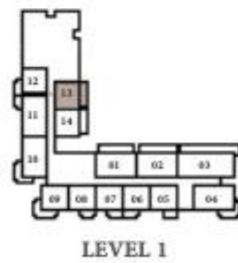
### KEY SECTION



### KEY LAYOUT



### KEY PLAN



FLOOR PLAN 1. All dimensions are in imperial and metric, and measured from finish to finish excluding construction tolerances. 2. All materials, dimensions, and drawings are approximate only. 3. Information is subject to change without notice, at developer's absolute discretion. 4. Actual area may vary from the stated area. 5. Drawings not to scale. 6. All images used are for illustrative purposes only and do not represent the actual size, features, specifications, fittings, and furnishings. 7. The developer reserves the right to make revisions / alterations, at its absolute discretion, without any liability whatsoever.

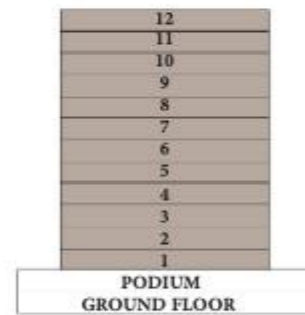
# MARINA PLACE 2

RASHID YACHTS & MARINA

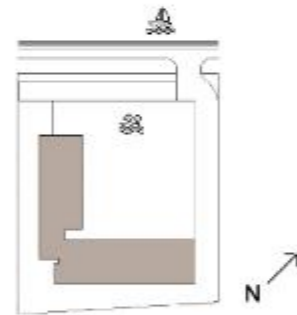
## 1 BEDROOM - TYPE 2

UNITS	109, 209, 309, 409, 509, 609, 709, 809, 909, 1009, 1109, 1209	
SUITE AREA	66.61 SQ.M.	716.98 SQ.FT.
BALCONY AREA	16.82 SQ.M.	181.05 SQ.FT.
TOTAL AREA	83.43 SQ.M.	898.03 SQ.FT.

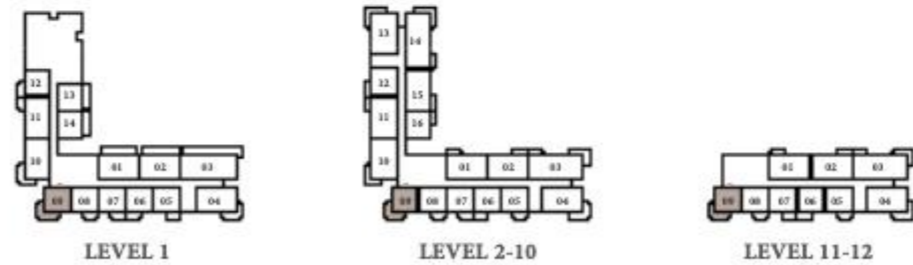
### KEY SECTION



### KEY LAYOUT



### KEY PLAN



FLOOR PLAN 1. All dimensions are in imperial and metric, and measured from finish to finish excluding construction tolerances. 2. All materials, dimensions, and drawings are approximate only. 3. Information is subject to change without notice, at developer's absolute discretion. 4. Actual area may vary from the stated area. 5. Drawings not to scale. 6. All images used are for illustrative purposes only and do not represent the actual size, features, specifications, fittings, and furnishings. 7. The developer reserves the right to make revisions / alterations, at its absolute discretion, without any liability whatsoever.

EMAAR

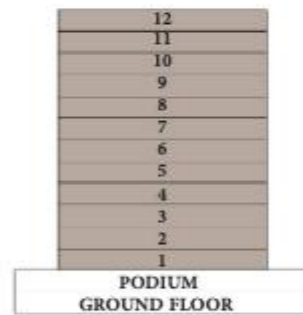
# MARINA PLACE 2

RASHID YACHTS & MARINA

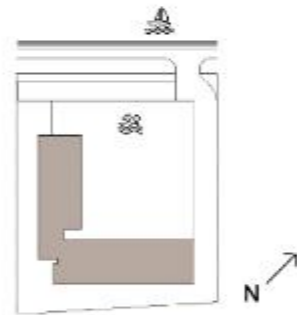
## 2 BEDROOM - 1A

UNITS	111, 202, 211, 215, 302, 311, 315, 402, 411, 415, 502, 511, 515, 602, 611, 615, 702, 711, 715, 802, 811, 815, 902, 911, 915, 1002, 1011, 1015, 1102, 1202	
SUITE AREA	100.15 SQ.M.	1078.01 SQ.FT.
BALCONY AREA	7.96 SQ.M.	85.68 SQ.FT.
TOTAL AREA	108.11 SQ.M.	1163.69 SQ.FT.

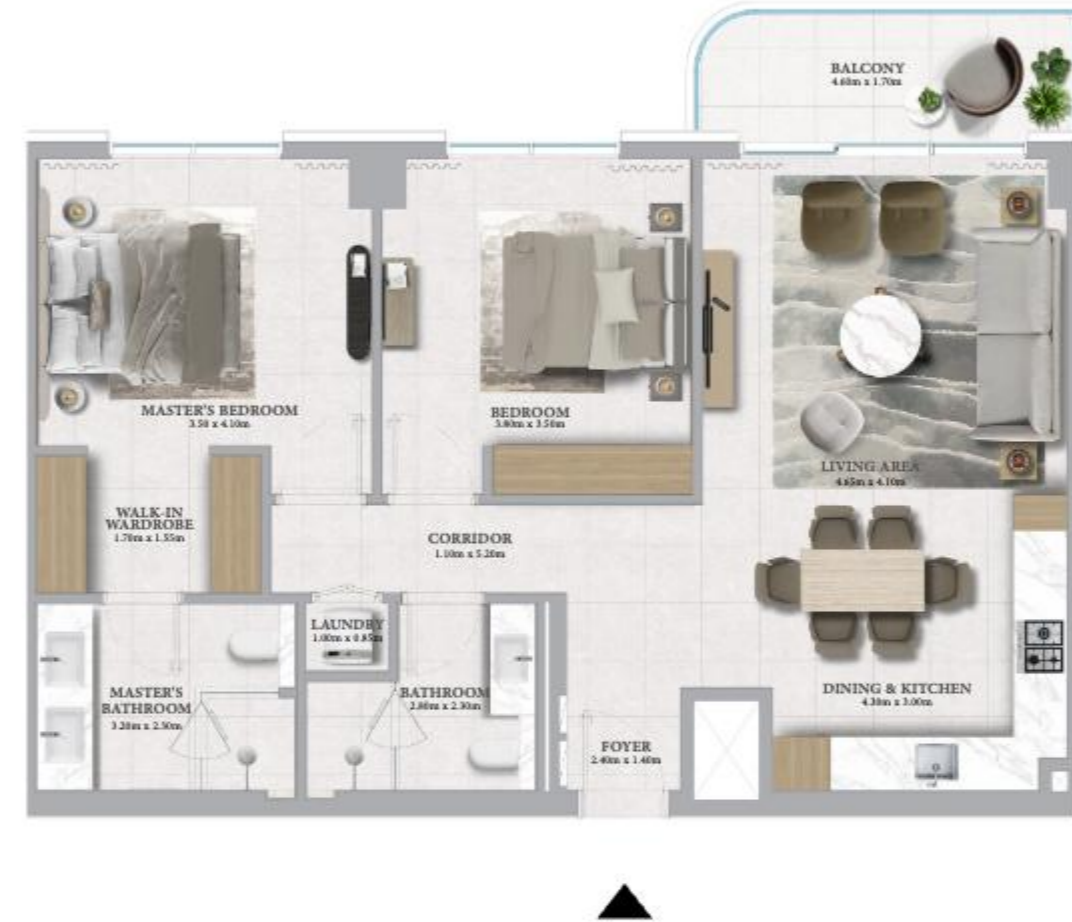
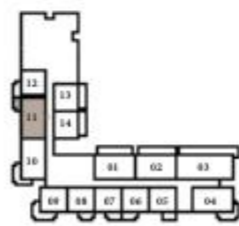
### KEY SECTION



### KEY LAYOUT



### KEY PLAN



FLOOR PLAN 1. All dimensions are in imperial and metric, and measured from finish to finish excluding construction tolerances. 2. All materials, dimensions, and drawings are approximate only. 3. Information is subject to change without notice, at developer's absolute discretion. 4. Actual area may vary from the stated area. 5. Drawings not to scale. 6. All images used are for illustrative purposes only and do not represent the actual size, features, specifications, fittings, and furnishings. 7. The developer reserves the right to make revisions / alterations, at its absolute discretion, without any liability whatsoever.



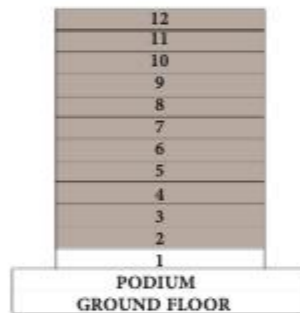
# MARINA PLACE 2

RASHID YACHTS & MARINA

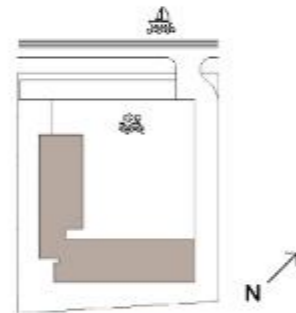
## 2 BEDROOM - 1B

UNITS	201, 301, 401, 501, 601, 701, 801, 901, 1001, 1101, 1201	
SUITE AREA	101.64 SQ.M.	1094.04 SQ.FT.
BALCONY AREA	7.80 SQ.M.	83.96 SQ.FT.
TOTAL AREA	109.44 SQ.M.	1178.00 SQ.FT.

### KEY SECTION



### KEY LAYOUT



### KEY PLAN



FLOOR PLAN 1. All dimensions are in imperial and metric, and measured from finish to finish excluding construction tolerances. 2. All materials, dimensions, and drawings are approximate only. 3. Information is subject to change without notice, at developer's absolute discretion. 4. Actual area may vary from the stated area. 5. Drawings not to scale. 6. All images used are for illustrative purposes only and do not represent the actual size, features, specifications, fittings, and furnishings. 7. The developer reserves the right to make revisions / alterations, at its absolute discretion, without any liability whatsoever.

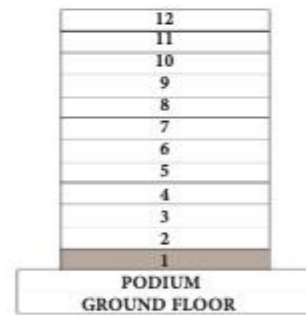
# MARINA PLACE 2

RASHID YACHTS & MARINA

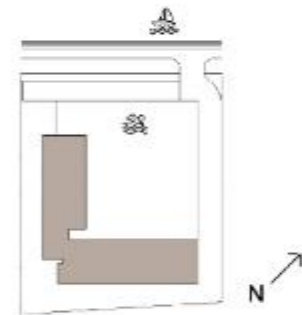
## 2 BEDROOM - 1C

UNITS	102	
SUITE AREA	100.15 SQ.M.	1078.01 SQ.FT.
TERRACE AREA	28.67 SQ.M.	308.60 SQ.FT.
TOTAL AREA	128.82 SQ.M.	1386.61 SQ.FT.

### KEY SECTION



### KEY LAYOUT



### KEY PLAN



FLOOR PLAN 1. All dimensions are in imperial and metric, and measured from finish to finish excluding construction tolerances. 2. All materials, dimensions, and drawings are approximate only. 3. Information is subject to change without notice, at developer's absolute discretion. 4. Actual area may vary from the stated area. 5. Drawings not to scale. 6. All images used are for illustrative purposes only and do not represent the actual size, features, specifications, fittings, and furnishings. 7. The developer reserves the right to make revisions / alterations, at it's absolute discretion, without any liability whatsoever.

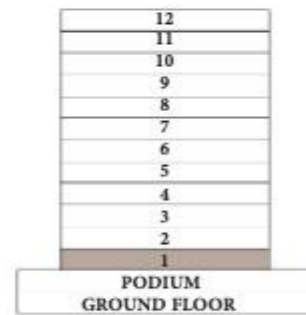
# MARINA PLACE 2

RASHID YACHTS & MARINA

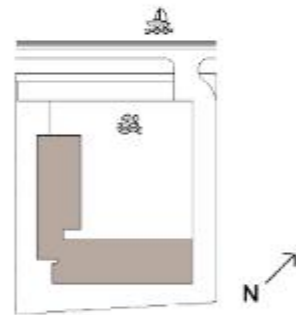
## 2 BEDROOM - 1D

UNITS	101	
SUITE AREA	101.64 SQ.M.	1094.04 SQ.FT.
TERRACE AREA	28.67 SQ.M.	308.60 SQ.FT.
TOTAL AREA	130.31 SQ.M.	1402.64 SQ.FT.

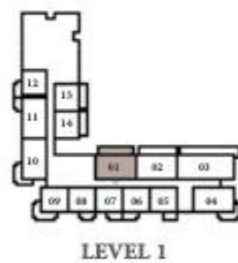
### KEY SECTION



### KEY LAYOUT



### KEY PLAN



FLOOR PLAN 1. All dimensions are in imperial and metric, and measured from finish to finish excluding construction tolerances. 2. All materials, dimensions, and drawings are approximate only. 3. Information is subject to change without notice, at developer's absolute discretion. 4. Actual area may vary from the stated area. 5. Drawings not to scale. 6. All images used are for illustrative purposes only and do not represent the actual size, features, specifications, fittings, and furnishings. 7. The developer reserves the right to make revisions / alterations, at it's absolute discretion, without any liability whatsoever.

EMAAR

# MARINA PLACE 2

RASHID YACHTS & MARINA

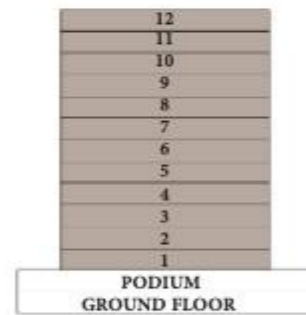
## 2 BEDROOM - TYPE 2

UNITS	110, 210, 310, 410, 510, 610, 710, 810, 910, 1010	
SUITE AREA	101.88 SQ.M.	1096.63 SQ.FT.
BALCONY AREA	16.82 SQ.M.	181.05 SQ.FT.
TOTAL AREA	118.70 SQ.M.	1277.68 SQ.FT.

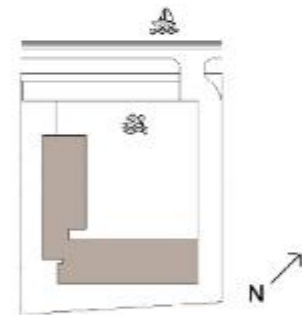
  

UNITS	104, 204, 304, 404, 504, 604, 704, 804, 904, 1004, 1104, 1204	
SUITE AREA	103.47 SQ.M.	1113.74 SQ.FT.
BALCONY AREA	16.82 SQ.M.	181.05 SQ.FT.
TOTAL AREA	120.29 SQ.M.	1294.79 SQ.FT.

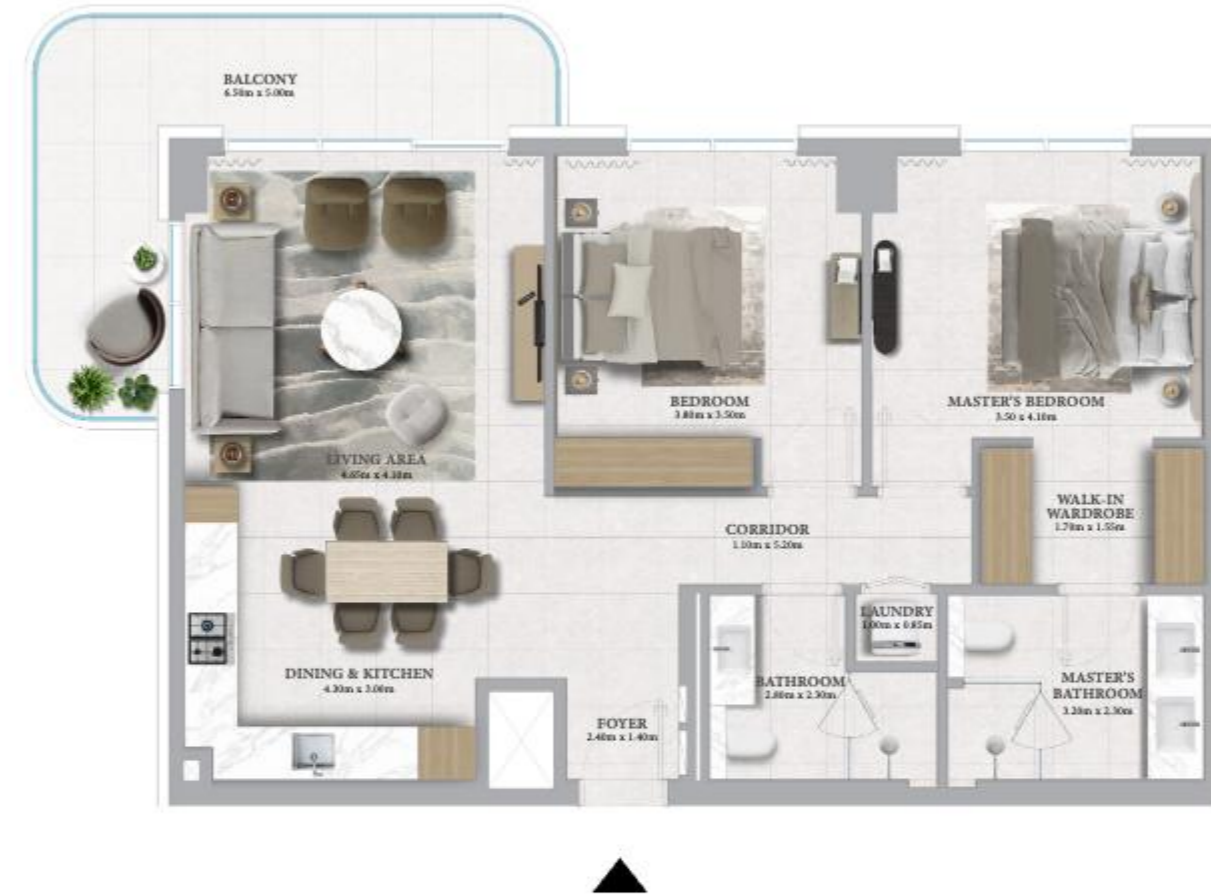
### KEY SECTION



### KEY LAYOUT



### KEY PLAN



FLOOR PLAN 1. All dimensions are in imperial and metric, and measured from finish to finish excluding construction tolerances. 2. All materials, dimensions, and drawings are approximate only. 3. Information is subject to change without notice, at developer's absolute discretion. 4. Actual area may vary from the stated area. 5. Drawings not to scale. 6. All images used are for illustrative purposes only and do not represent the actual size, features, specifications, fittings, and furnishings. 7. The developer reserves the right to make revisions / alterations, at its absolute discretion, without any liability whatsoever.

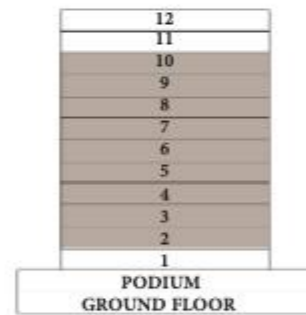
# MARINA PLACE 2

RASHID YACHTS & MARINA

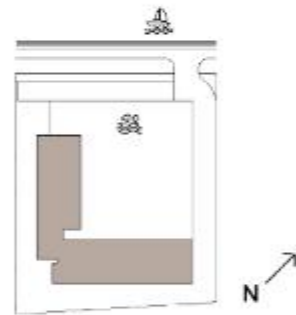
## 2 BEDROOM - TYPE 3

UNITS	213, 313, 413, 513, 613, 713, 813, 913, 1013	
SUITE AREA	103.54 SQ.M.	1114.50 SQ.FT.
BALCONY AREA	19.41 SQ.M.	208.93 SQ.FT.
TOTAL AREA	122.95 SQ.M.	1323.43 SQ.FT.

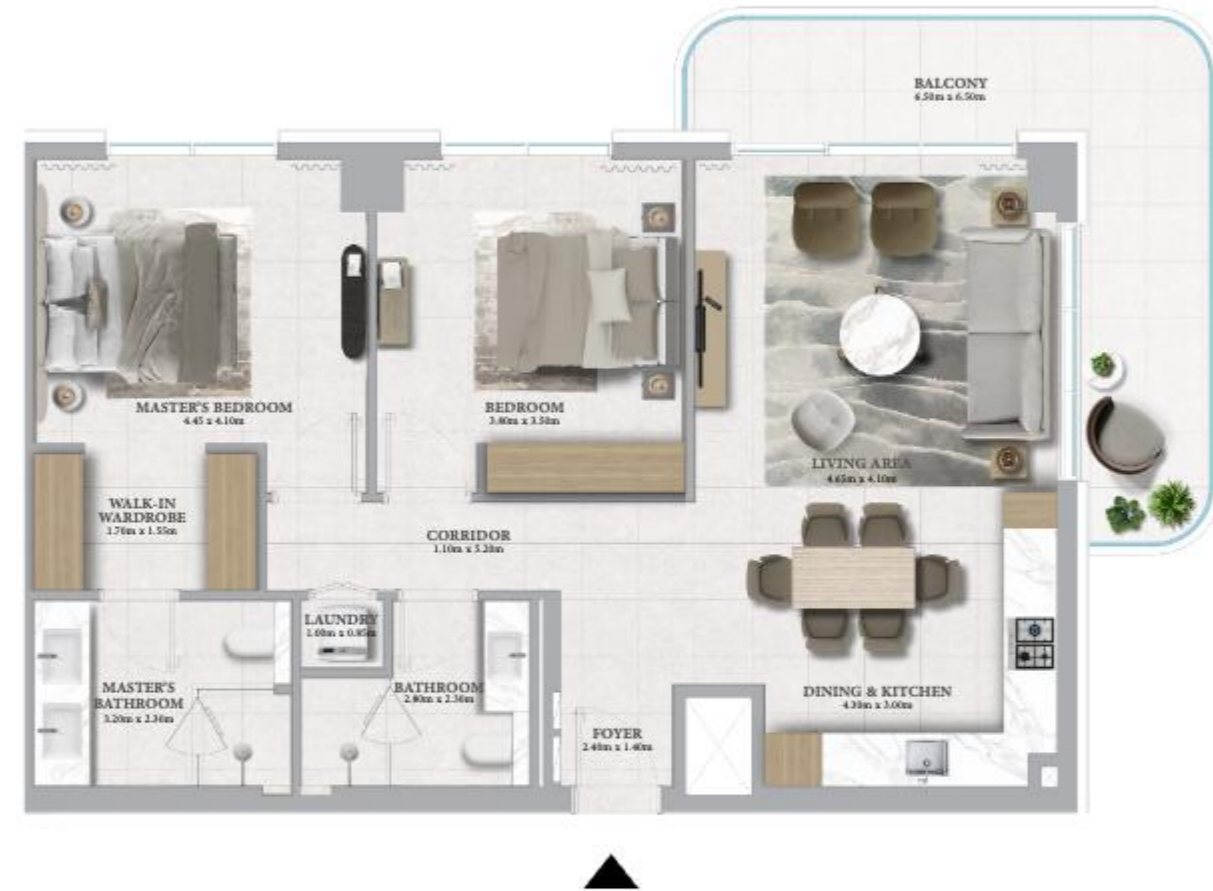
### KEY SECTION



### KEY LAYOUT



### KEY PLAN



FLOOR PLAN 1. All dimensions are in imperial and metric, and measured from finish to finish excluding construction tolerances. 2. All materials, dimensions, and drawings are approximate only. 3. Information is subject to change without notice, at developer's absolute discretion. 4. Actual area may vary from the stated area. 5. Drawings not to scale. 6. All images used are for illustrative purposes only and do not represent the actual size, features, specifications, fittings, and furnishings. 7. The developer reserves the right to make revisions / alterations, at it's absolute discretion, without any liability whatsoever.

EMAAR

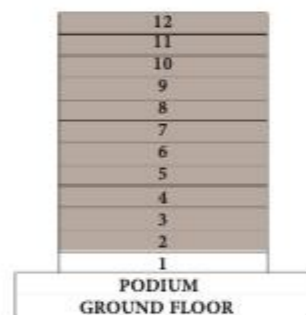
# MARINA PLACE 2

RASHID YACHTS & MARINA

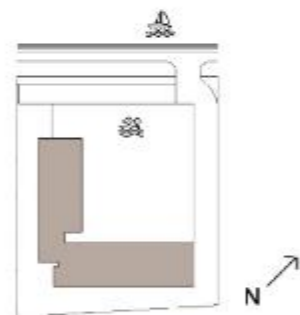
## 3 BEDROOM - 1A

UNITS	203, 303, 403, 503, 603, 703, 803, 903, 1003, 1103, 1203	
SUITE AREA	134.76 SQ.M.	1450.54 SQ.FT.
BALCONY AREA	24.87 SQ.M.	267.70 SQ.FT.
TOTAL AREA	159.63 SQ.M.	1718.24 SQ.FT.

### KEY SECTION



### KEY LAYOUT



### KEY PLAN



LEVEL 2-10



LEVEL 11-12



FLOOR PLAN 1. All dimensions are in imperial and metric, and measured from finish to finish excluding construction tolerances. 2. All materials, dimensions, and drawings are approximate only. 3. Information is subject to change without notice, at developer's absolute discretion. 4. Actual area may vary from the stated area. 5. Drawings not to scale. 6. All images used are for illustrative purposes only and do not represent the actual size, features, specifications, fittings, and furnishings. 7. The developer reserves the right to make revisions / alterations, at its absolute discretion, without any liability whatsoever.

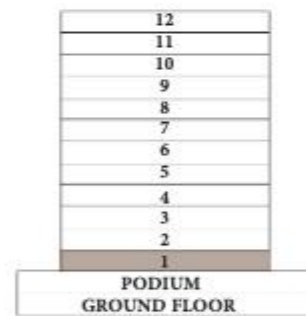
# MARINA PLACE 2

RASHID YACHTS & MARINA

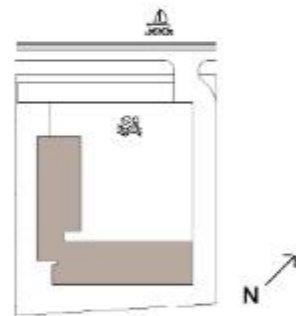
## 3 BEDROOM - 1B

UNITS	103	
SUITE AREA	134.76 SQ.M.	1450.54 SQ.FT.
TERRACE AREA	46.85 SQ.M.	504.29 SQ.FT.
TOTAL AREA	181.61 SQ.M.	1954.83 SQ.FT.

### KEY SECTION



### KEY LAYOUT



### KEY PLAN



FLOOR PLAN 1. All dimensions are in imperial and metric, and measured from finish to finish excluding construction tolerances. 2. All materials, dimensions, and drawings are approximate only. 3. Information is subject to change without notice, at developer's absolute discretion. 4. Actual area may vary from the stated area. 5. Drawings not to scale. 6. All images used are for illustrative purposes only and do not represent the actual size, features, specifications, fittings, and furnishings. 7. The developer reserves the right to make revisions / alterations, at its absolute discretion, without any liability whatsoever.

EMAAR

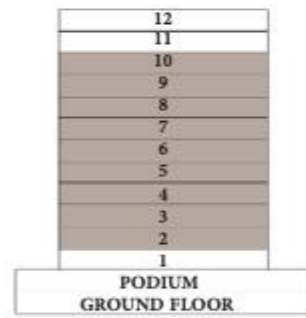
# MARINA PLACE 2

RASHID YACHTS & MARINA

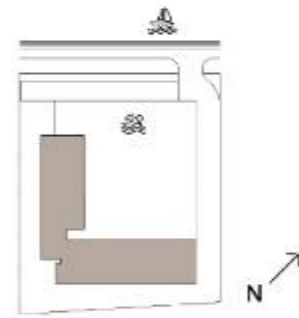
## 3 BEDROOM - TYPE 2

UNITS	214, 314, 414, 514, 614, 714, 814, 914, 1014	
SUITE AREA	134.83 SQ.M.	1451.30 SQ.FT.
BALCONY AREA	27.21 SQ.M.	292.89 SQ.FT.
TOTAL AREA	162.04 SQ.M.	1744.19 SQ.FT.

### KEY SECTION



### KEY LAYOUT



### KEY PLAN



FLOOR PLAN 1. All dimensions are in imperial and metric, and measured from finish to finish excluding construction tolerances. 2. All materials, dimensions, and drawings are approximate only. 3. Information is subject to change without notice, at developer's absolute discretion. 4. Actual area may vary from the stated area. 5. Drawings not to scale. 6. All images used are for illustrative purposes only and do not represent the actual size, features, specifications, fittings, and furnishings. 7. The developer reserves the right to make revisions / alterations, at its absolute discretion, without any liability whatsoever.