

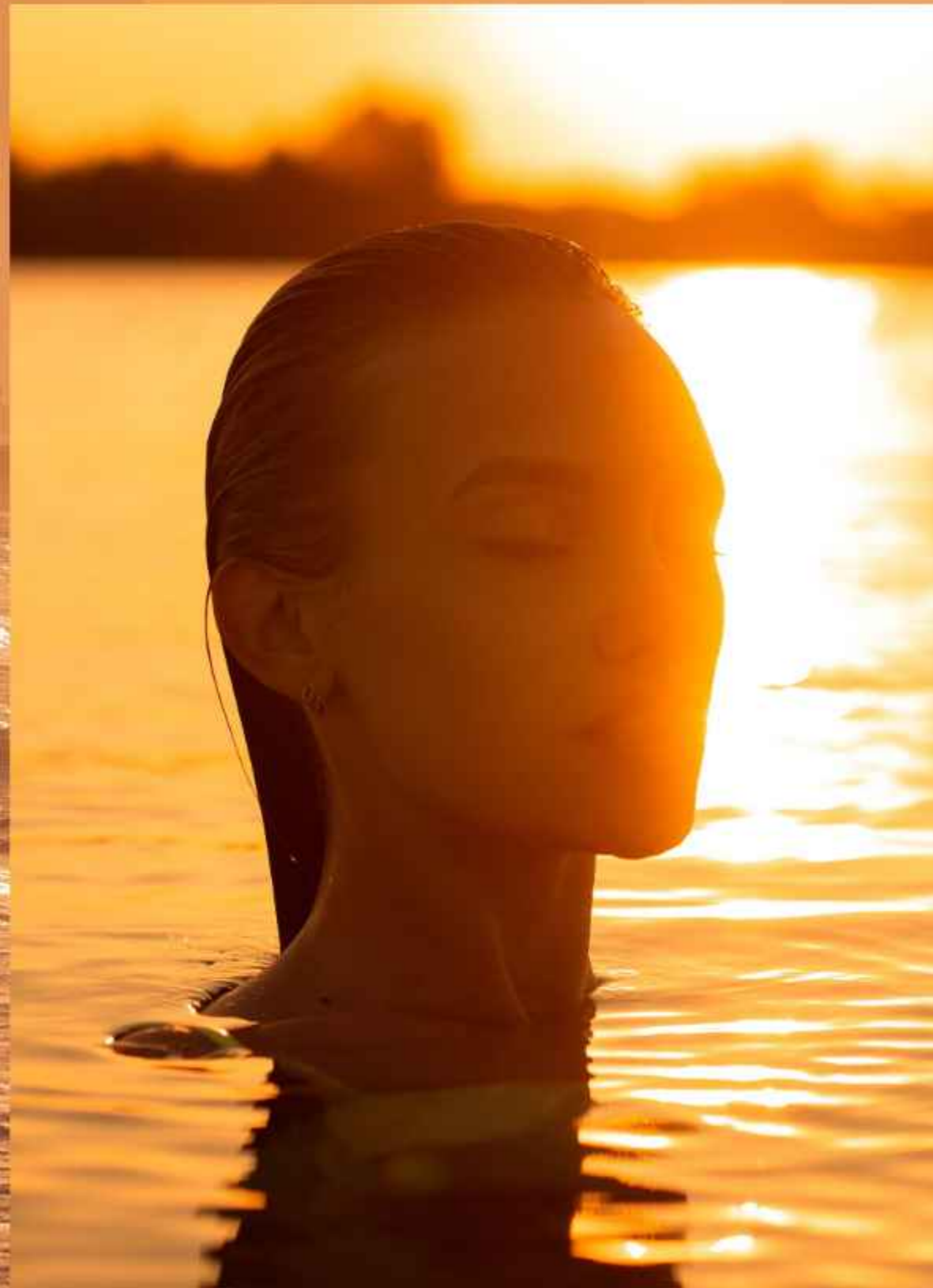
بن غاطي إيليت  
BINGHATTI ELITE



ON THE EDGES OF  
THE CITY'S FRAME

WHERE THE ELECTRIC HUM  
OF CREATIVITY PULSATES

BINGHATTI ELITE  
COMES INTO VIEW



AN UNASHAMEDLY BOLD STATEMENT,  
UNAPOLOGETICALLY LUXURIOUS.

FRONT AND CENTER IN DUBAI'S HEART.  
WHERE DARING INNOVATION CONVERGES,

AND BRIGHT LIGHTS FILL THE SKY.

A METEORIC HIGH-RISE,  
SCULPTED IN GLASS AND STEEL,  
WITH BRUTALLY CLEAN LINES.

A PLACE FOR THOSE  
WHO DEMAND ATTENTION.  
WHO DARE TO LIVE  
OUTRAGEOUSLY WELL.

INSIDE, DECADENT SPACES UNFOLD.  
SOARING WINDOWS CAPTURE  
THE CITYSCAPE, A MOMENTOUS  
BACKDROP FOR A LIFE LESS ORDINARY.





---

EMBRACE THE ENERGY.

EMBRACE THE ELITE.

WHERE AMBITION

FINDS ITS ADDRESS

A NEW STANDARD OF LIVING,

**IGNITED**

---





## A NEW BENCHMARK

IN THE ELECTRIC HEART OF DUBAI PRODUCTION CITY, WHERE CREATIVITY AND INNOVATION COLLIDE, BINGHATTI ELITE RISES – A DECLARATION OF DESIGN-FORWARD LIVING. THIS IS A PLACE FOR THOSE WHO REFUSE TO BLEND IN, WHO COMMAND ATTENTION, WHO WRITE THEIR OWN RULES.







AN ICON IN NO  
UNCERTAIN TERMS

BINGHATTI ELITE IS ARCHITECTURE AS  
EXPRESSION. CLEAN LINES CUT THROUGH  
THE SKY. GLASS AND STEEL GLEAM WITH  
AN UNTAMED ENERGY. THIS IS A BUILDING  
THAT REFUSES TO APOLOGISE FOR ITS  
BOLDNESS, ITS UNAPOLOGETIC LUXURY.

BINGHATTI  
Elite

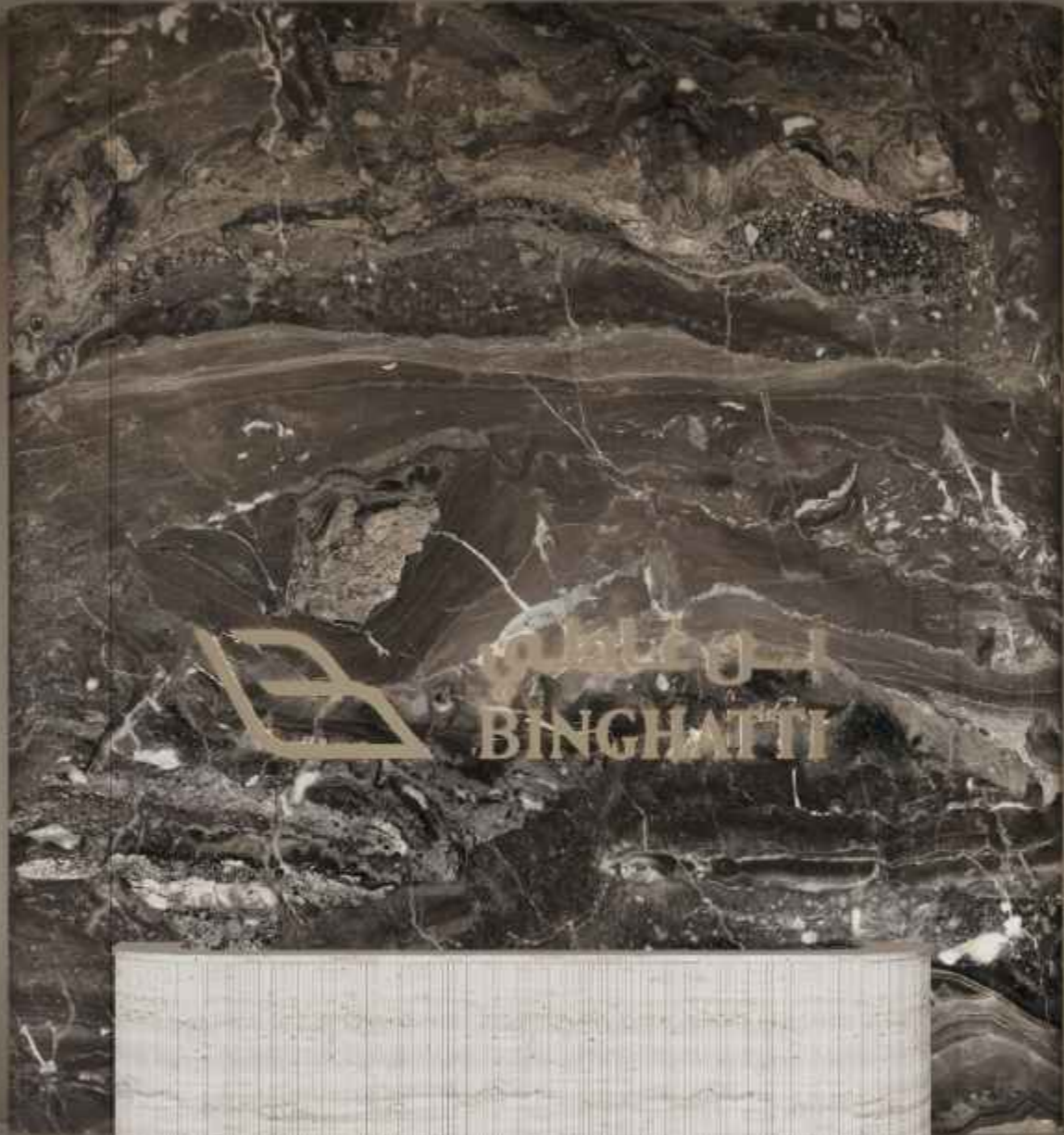
ABOUT  
BINGHATTI ELITE

STRUCTURAL ELEMENTS, EACH ECHOING THE BOLDNESS OF AMBITION, CREATE SPACES OF UNDENIABLE POWER AND REFINED BEAUTY. BINGHATTI ELITE'S FACADE, A NOD TO MODERN ELEGANCE, FAULTLESSLY BLENDS CUTTING-EDGE DESIGN WITH A TIMELESS APPEAL.











## SHINE IN PRODUCTION CITY

BINGHATTI ELITE IS ROOTED IN DUBAI PRODUCTION CITY, A KINETIC HUB OF EXPRESSION. IT PLACES YOU AT THE CROSSROADS OF THE CITY'S UNTAMED ENERGY AND LIMITLESS POTENTIAL. CONNECTED TO SIGHTS, YET OFFERING SUFFICIENT SPACE TO COME INTO YOUR OWN. IMAGINE SOARING VIEWS OF TOWERS, A CONSTANT HUM OF DRIVE, WHILE BEING HELD IN A WORLD OF UNIQUE LUXURY.

BINGHATTI  
Elite

  
CITY CENTRE  
ME'AISEM  
WALKING  
DISTANCE

  
DUBAI  
HILLS  
MALL  
8 MINS

  
PALM JUMEIRAH  
10 MINS

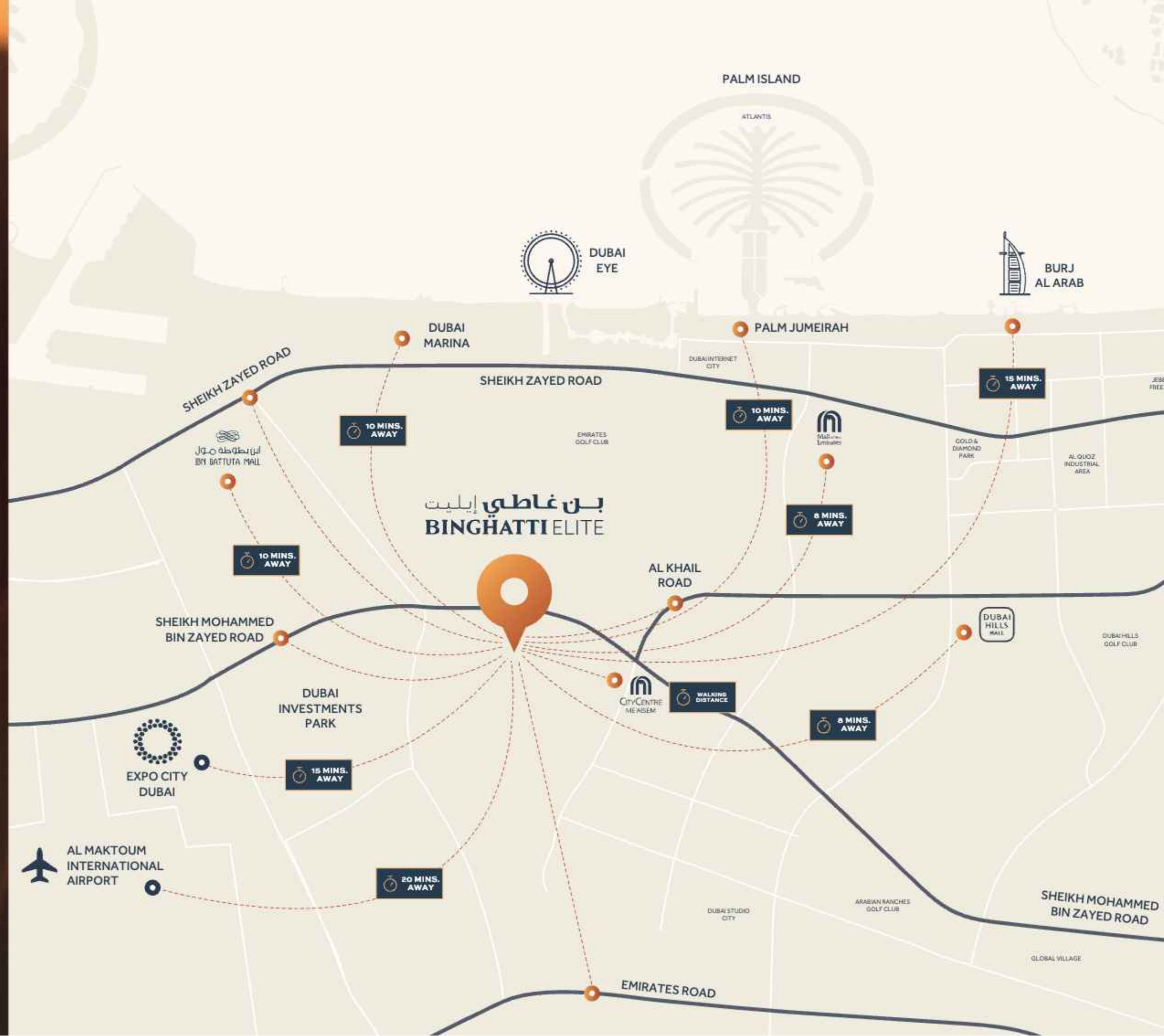
  
Mall of the  
Emirates  
8 MINS

  
DUBAI MARINA  
10 MINS

  
ابن بطوطة مول  
IBN BATTUTA MALL  
10 MINS

  
EXPO CITY  
DUBAI  
15 MINS

  
BURJ AL ARAB  
15 MINS





BINGHATTI  
Elite

## PROJECT FACTS

### PROPERTY TYPE

RESIDENTIAL

### PLOT AREA

10244.36 SQ.M / 110269.37 SQFT

### DESCRIPTION

4B + G + 2P + 23 RESIDENTIAL FLOORS +  
ROOF

### NUMBER OF UNITS

STUDIO APARTMENT : 1587

1 BEDROOM APARTMENT : 158

### TOTAL UNITS

RESIDENTIAL UNITS : 1745







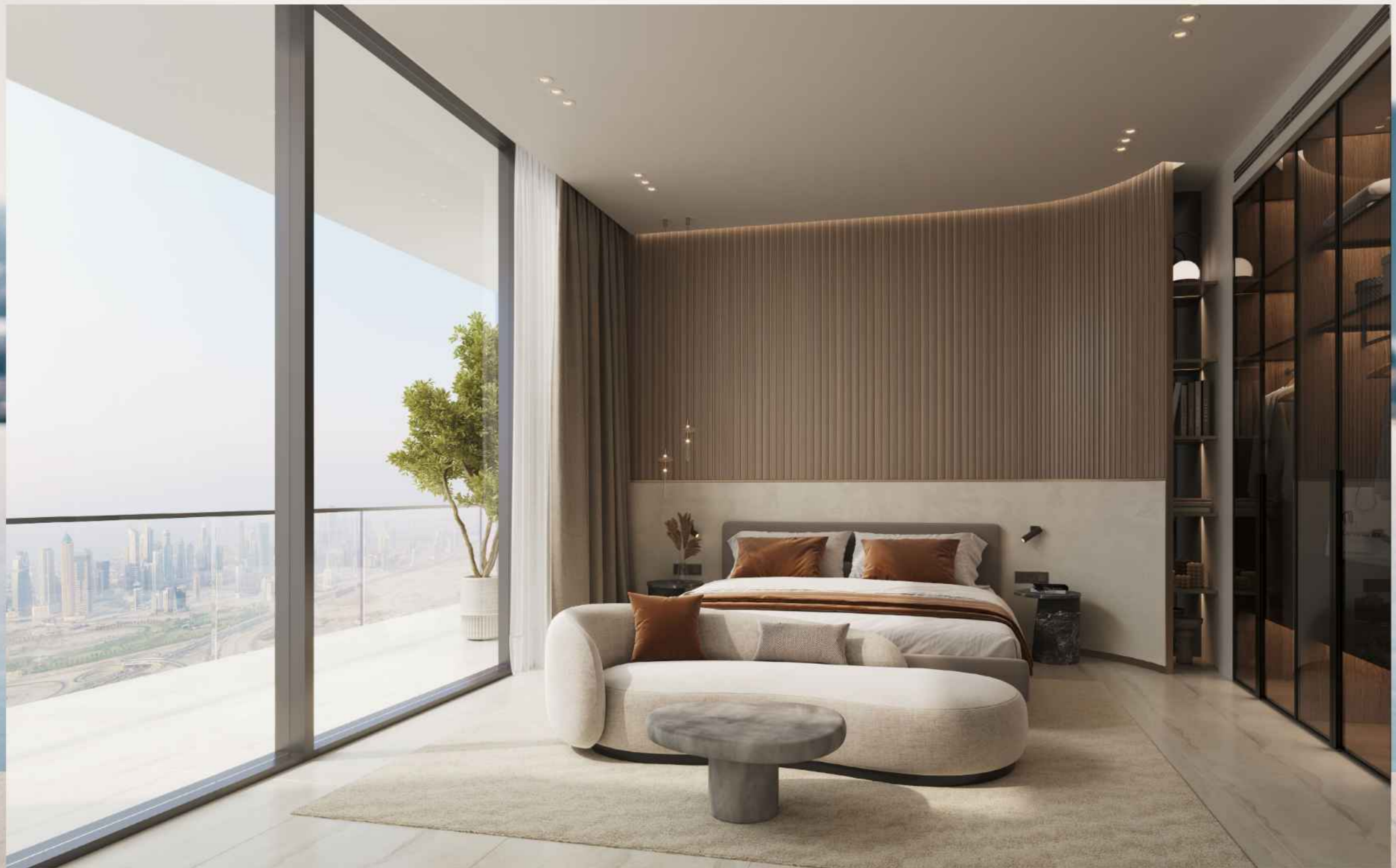
## UNCOMPROMISINGLY LUXURIOUS

BINGHATTI ELITE CHALLENGES THE VERY IDEA OF REFINED LIVING, WITH PAINSTAKINGLY DESIGNED RESIDENCES CRAFTED FOR THOSE WHO DEMAND MORE. EXPANSIVE WINDOWS LET THE WORLD IN, FRAMING THE MESMERISING CITYSCAPE. IT'S A SPACE OF ELEGANCE AND COMFORT. A SEAT IN THE SKY FOR THOSE WHO REFUSE TO SETTLE FOR ANYTHING LESS THAN EXTRAORDINARY.



No Entry (منع الدخول)

Parking Entrance / مدخل للسيارات



## TRIUMPH OF TEXTURES

BINGHATTI ELITE EMBODIES THE VERY NOTION OF LUXURY. SLEEK METAL ACCENTS INTERTWINE WITH RICHLY WOVEN TEXTURES, CREATING A LIVED EXPERIENCE FOR THE SENSES VISIONARY DESIGN DISSOLVES THE BOUNDARIES BETWEEN INSIDE AND OUT, LEAVING YOU SUSPENDED IN PANORAMAS. A BOLD PALETTE, INSPIRED BY THE CITY'S ENERGY, PROVIDES A BACKDROP FOR A LIFE LIVED BEYOND LIMITS.





# APARTMENT MATERIALS



An aerial photograph of a modern skyscraper at dusk. The building features a distinctive facade with vertical white slats and a grid of windows that are illuminated from within, creating a warm glow. The building is surrounded by landscaped grounds with palm trees and a parking area. In the background, other buildings and a road with traffic are visible under a twilight sky. A dark, semi-transparent text box is overlaid on the left side of the image.

## TOWERING WITH INDULGENT AMENITIES

AT BINGHATTI ELITE, THE REWARD IS EVER SO SWEET. PLUNGE INTO SHIMMERING POOLS. UNWIND IN THE JACUZZI AS THE CITY LIGHTS GLISTEN BELOW. THIS IS YOUR DOMAIN. SCULPT YOUR PHYSIQUE IN THE STATE-OF-THE-ART FITNESS CENTRE. OR CHALLENGE YOUR RIVALS ON THE COURT. IT'S ALL RIGHT HERE.



## AMENITIES



KIDS POOL • JOGGING TRACK  
OUTDOOR SEATING AREA  
ADULT POOL • JACUZZI • WET DECK  
POOL DECK • BASKETBALL COURT  
KIDS PLAY AREA

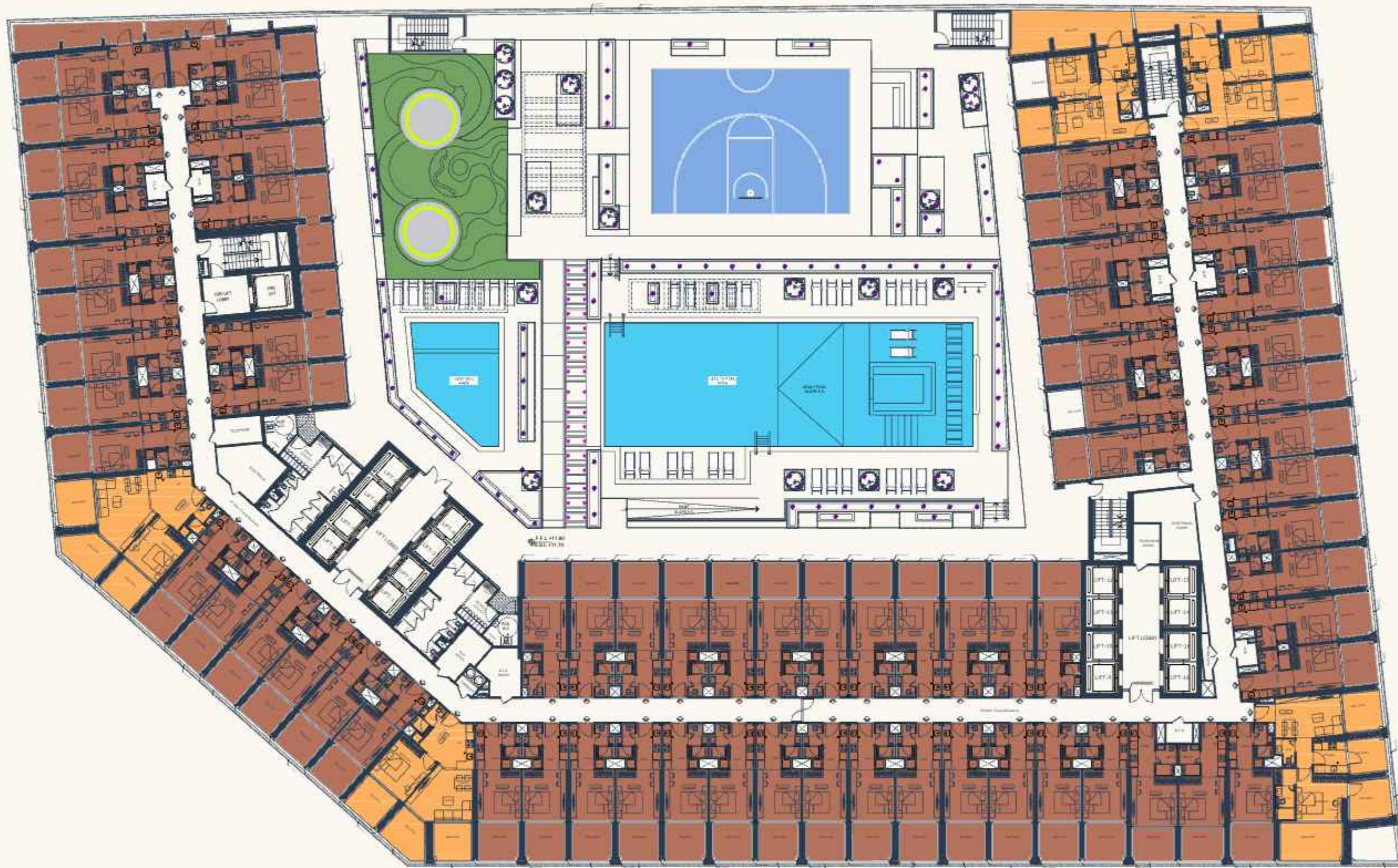












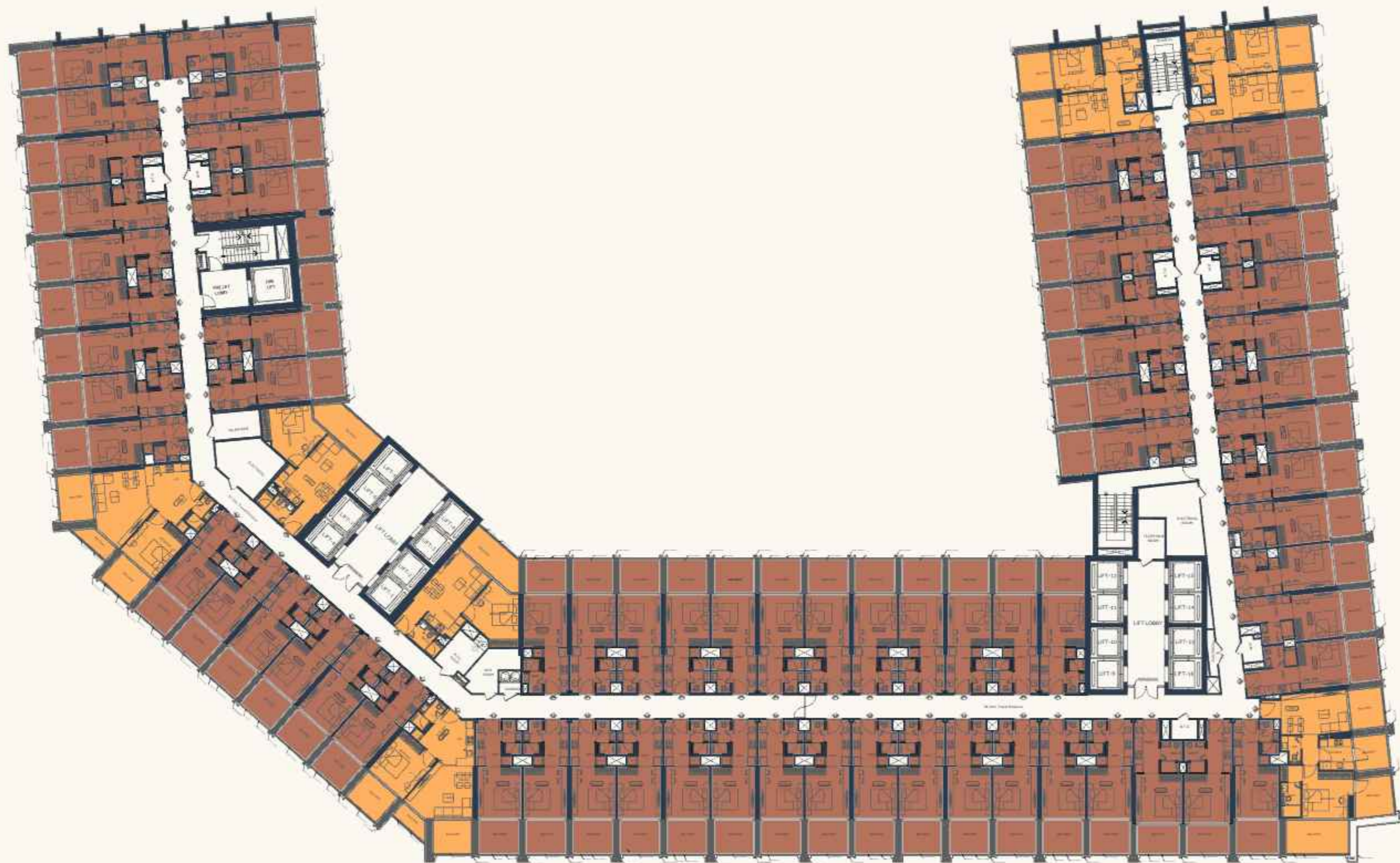
# Floor Plan

FIRST

Disclaimer: 1. All core drawings are measured to structural elements and exclude wall finishes and construction tolerances. 2. All dimensions have been provided by our contracted architect. 3. All materials, dimensions and drawings are approximate. Information is subject to change without notice. 4. Actual suite area may vary from the stated area. Drawings not to scale. The developer reserves the right to make revisions. 5. Calculation of suite area is measured as the area bounded by the centre line of demising or partition walls separating one unit from another unit, the exterior face of all exterior walls, and the exterior face of the corridor wall enclosing the adjoining unit. 6. Calculation of balcony area is measured as the area bounded by the centre line of demising or partition walls separating one unit from another unit, the exterior face of the enclosing guard and the exterior face of the adjoining balcony. 7. The units are measured at typical floor in the building. Suite area may vary in size depending on the floor level. 8. For each unit type, unit sizes and details might be slightly different. Please refer to the sales and purchase agreement for the actual size of each specific unit.

البيان: 1. جميع الرسومات هي مقاسة إلى العناصر الهيكلية وتتجاهل تفاصيل التشطيبات والاختلافات الإنشائية. 2. جميع الأبعاد قد تم توفيرها من قبل معمارنا المتعاقد. 3. جميع المواد والأبعاد والرسومات هي تقريبية. المعلومات هي عرضة للتغيير دون إشعار مسبق. 4. المساحة الفعلية للوحدات قد تختلف عن المساحة المعلن عنها. الرسومات ليست على مقياس. يحتفظ المطور بالحق في إجراء تعديلات. 5. طريقة حساب مساحة الوحدة هي المساحة المحيطة بالخط الوسطي للجدران الفاصلة بين الوحدات، والواجهة الخارجية لجميع الجدران الخارجية، والواجهة الخارجية للجدران المحيطة بالوحدات المجاورة. 6. طريقة حساب مساحة الشرفة هي المساحة المحيطة بالخط الوسطي للجدران الفاصلة بين الوحدات، والواجهة الخارجية للحواجز المحيطة بالشرفة والواجهة الخارجية للشرفة المجاورة. 7. الوحدات هي مقاسة على الطابق النموذجي في المبنى. قد تختلف مساحة الوحدات في الطابق النموذجي عن المساحة المعلن عنها. 8. لكل نوع وحدة، قد تختلف الأحجام والتفاصيل قليلاً. يرجى الرجوع إلى اتفاقية البيع والشراء للحصول على الحجم الفعلي لكل وحدة.





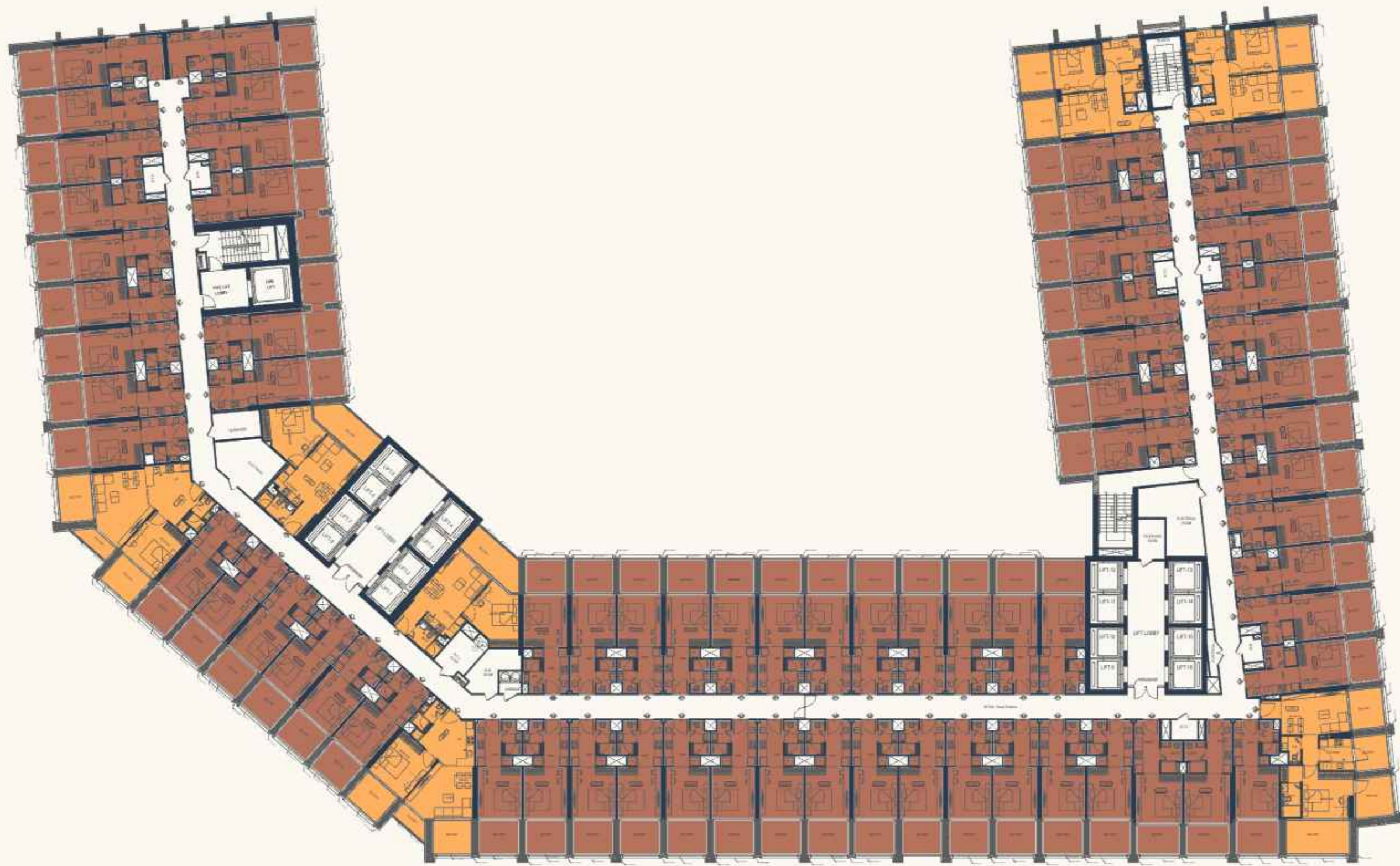
# Floor Plan

2<sup>ND</sup>-4<sup>TH</sup>, 6<sup>TH</sup>-8<sup>TH</sup>, 10<sup>TH</sup>-12<sup>TH</sup>, 14<sup>TH</sup>-16<sup>TH</sup>, 18<sup>TH</sup>-20<sup>TH</sup> & 22<sup>ND</sup>



Disclaimer: 1. All room drawings are measured to structural elements and exclude wall finishes and construction tolerances. 2. All dimensions have been provided by our contracted architect. 3. All materials, dimensions and drawings are approximate. Information is subject to change without notice. 4. Actual built area may vary from the stated area. Drawings not to scale. The developer reserves the right to make revisions. 5. Calculation of sale area is measured as the area bounded by the centre line of demising or partition walls separating one unit from another unit, the exterior face of all exterior walls, and the exterior face of the corridor wall enclosing the adjoining unit. 6. Calculation of balcony area is measured as the area bounded by the centre line of demising or partition walls separating one unit from another unit, the exterior face of the enclosing guard and the exterior face of the adjoining balcony. 7. The units are measured at typical floor in the building. Columns may vary in size depending on the floor level. 8. For each unit type, unit sizes and details might be slightly different. Please refer to the sales and purchase agreement for the actual size of each specific unit.

إقرار: 1. جميع الرسومات هي مقاسة إلى العناصر الهيكلية وتتجاهل طلاء الجدران والبناء والتسامح. 2. جميع الأبعاد قد تم توفيرها من قبل معمارنا المتعاقد. 3. جميع المواد والأبعاد والرسومات هي تقريبية. المعلومات هي عرضة للتغيير دون إشعار مسبق. 4. المساحة الفعلية قد تختلف عن المساحة المعلن عنها. الرسومات ليست على مقياس. يحتفظ المطور بالحق في إجراء التعديلات. 5. حساب مساحة البيع هو المقاس على الخط الأوسط للجدران الفاصلة بين الوحدات، وجوانب جميع الجدران الخارجية، وجوانب الجدران المحيطة بالمرحلة التي تحدها الوحدة المجاورة. 6. حساب مساحة الشرفة هو المقاس على الخط الأوسط للجدران الفاصلة بين الوحدات، وجوانب الجدران المحيطة بالمرحلة التي تحدها الوحدة المجاورة، وجوانب الجدران المحيطة بالمرحلة التي تحدها الوحدة المجاورة. 7. الوحدات هي مقاسة على الطابق النموذجي في المبنى. الأعمدة قد تختلف في الحجم اعتماداً على مستوى الطابق. 8. لكل نوع وحدة، قد تختلف الأحجام والتفاصيل قليلاً. يرجى الرجوع إلى اتفاقية البيع والشراء للحصول على الحجم الفعلي لكل وحدة محددة.



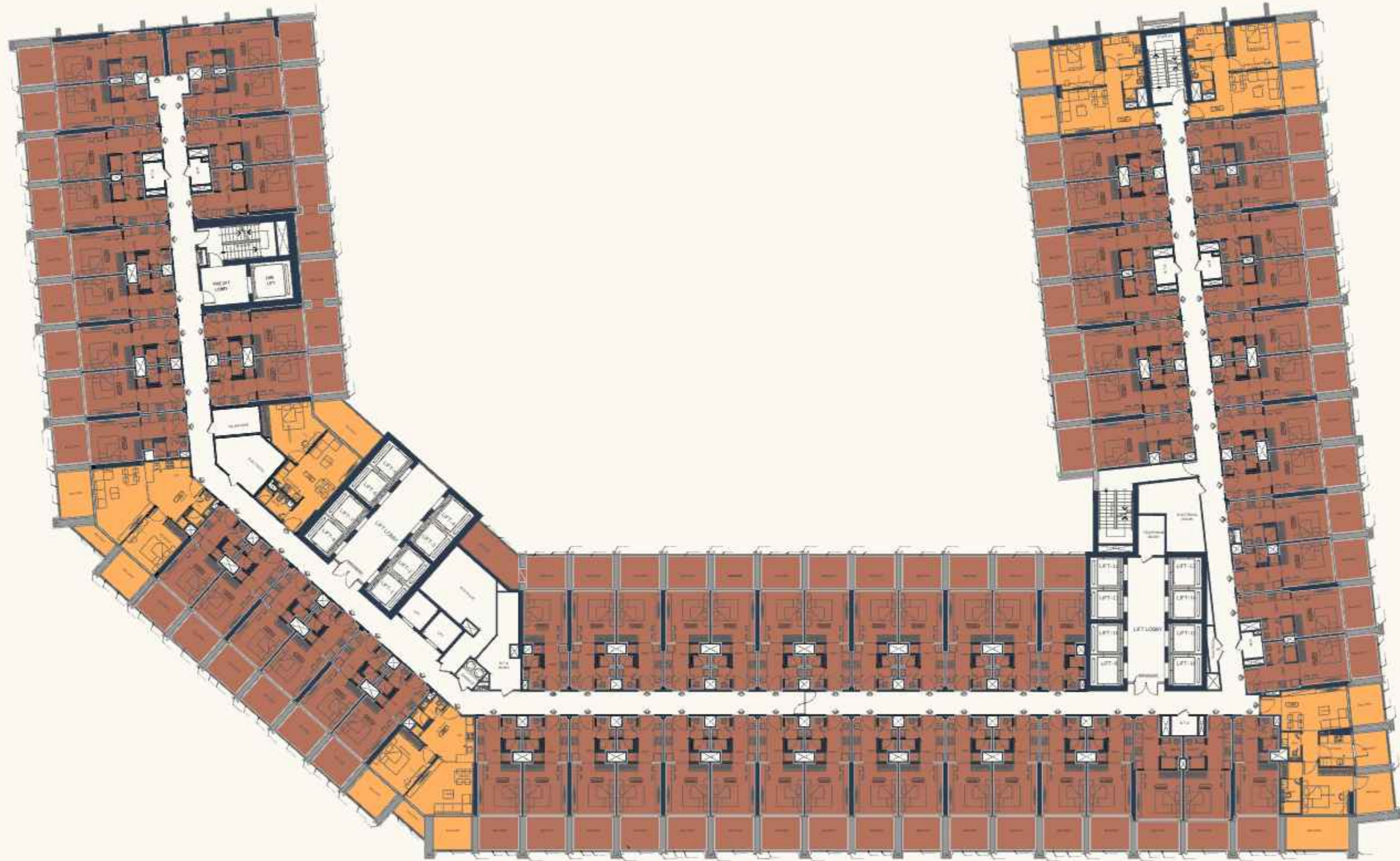
# Floor Plan

5<sup>th</sup>, 9<sup>th</sup>, 13<sup>th</sup>, 17<sup>th</sup> & 21<sup>st</sup>



Disclaimer: 1. All room drawings are measured to structural elements and exclude wall finishes and construction tolerances. 2. All dimensions have been provided by our contracted architect. 3. All materials, dimensions and drawings are approximate. Information is subject to change without notice. 4. Actual built area may vary from the stated area. Drawings not to scale. The developer reserves the right to make revisions. 5. Calculation of built area is measured as the area bounded by the centre line of demising or partition walls separating one unit from another unit, the exterior face of all exterior walls, and the exterior face of the corridor wall enclosing the adjoining unit. 6. Calculation of balcony area is measured as the area bounded by the centre line of demising or partition walls separating one level from another unit, the exterior face of the enclosing guard and the exterior face of the adjoining balcony. 7. The units are measured at typical floor in the building. Columns may vary in size depending on the floor level. 8. For each unit type, unit sizes and details might be slightly different. Please refer to the sales and purchase agreement for the actual size of each specific unit.

التوضيح: 1. جميع الرسومات المقدمه هي مقاسها الى العناصر الهيكليه وتتجاهل اتمامات الجدران والبناء والتسامح. 2. جميع المقاسات قد تم توفيرها من قبل المهندس المعماري. 3. جميع المواد، المقاسات والرسومات هي تقريبيه. المعلومات هي عرضة للتغيير دون اخطار. 4. المساحة الفعلية قد تختلف عن المساحة المذكورة. الرسومات ليست بالقياس. 5. حساب المساحة المقامه هي المساحة المحيطة بالخط الوسطي للجدران الفاصلة بين الوحدات من الوحدات الاخرى، الوجه الخارجى لجميع الجدران الخارجيه، والوجه الخارجى لواجهه الممر المحيطة بالوحده المجاورة. 6. حساب المساحة المقامه هي المساحة المحيطة بالخط الوسطي للجدران الفاصلة بين الوحدات من الوحدات الاخرى، الوجه الخارجى لواجهه الحارس المحيطة بالوحده المجاورة، والوجه الخارجى لواجهه الشرفة المجاورة. 7. الوحدات هي مقاسها على الطابق النموذجي في المبنى. 8. قد يختلف حجم الاعمده اعتمادا على الطابق. 9. لكل نوع من الوحدات، المقاسات والتفاصيل قد تختلف قليلا. يرجى الرجوع الى اتفاقية البيع والشراء للحصول على المقاس الفعلي لكل وحدة.



# Floor Plan

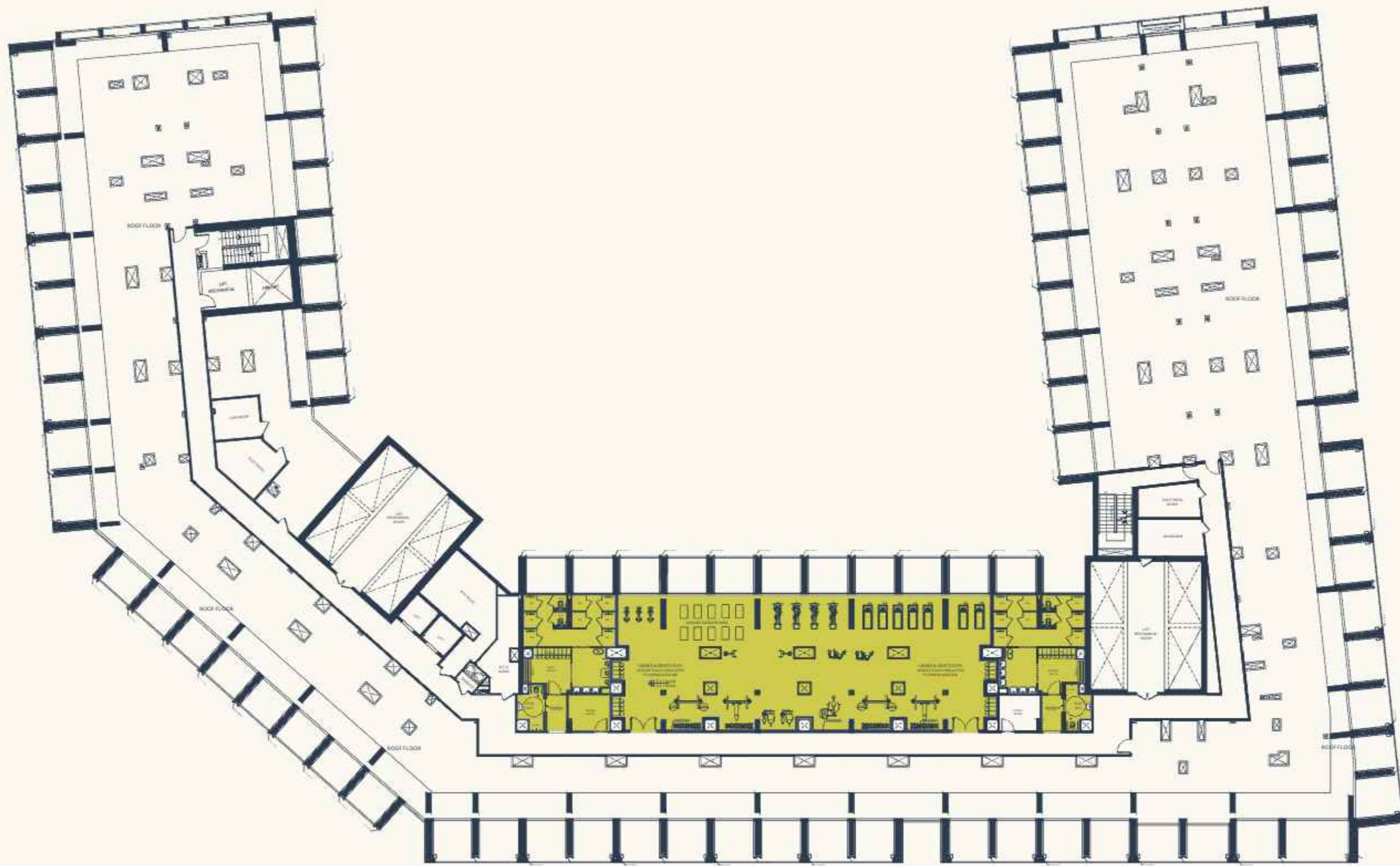
23<sup>rd</sup>



Disclaimer: 1. All room drawings are measured to structural elements and exclude wall finishes and construction tolerances. 2. All dimensions have been provided by our contracted architect. 3. All materials, dimensions and drawings are approximate. Information is subject to change without notice. 4. Actual built area may vary from the stated area. Drawings not to scale. The developer reserves the right to make revisions. 5. Calculation of sale area is measured as the area bounded by the centre line of demising or partition walls separating one unit from another unit, the exterior face of all exterior walls, and the exterior face of the corridor wall enclosing the adjoining unit. 6. Calculation of balcony area is measured as the area bounded by the centre line of demising or partition walls separating one unit from another unit, the exterior face of the enclosing guard and the exterior face of the adjoining balcony. 7. The units are measured at typical floor in the building. Columns may vary in size depending on the floor level. 8. For each unit type, unit sizes and details might be slightly different. Please refer to the sales and purchase agreement for the actual size of each specific unit.

التوضيح: 1. جميع الرسومات هي مقاسة إلى العناصر الهيكلية وتتجاهل ديكورات الجدران والبناء والتسامح. 2. جميع الأبعاد قد تم توفيرها من قبل المهندس المعماري. 3. جميع المواد والأبعاد والرسومات هي تقريبية. المعلومات عرضة للتغيير دون إشعار مسبق. 4. المساحة الفعلية قد تختلف عن المساحة المعلنة. الرسومات غير مقاسة. يحتفظ المطور بالحق في إجراء التعديلات. 5. حساب مساحة البيع يتم قياسه على المساحة المحيطة بخط الوسط للجدران الفاصلة بين الوحدات، وجوانب جميع الجدران الخارجية، وجوانب الجدران المحيطة بالممرات التي تحيط بالوحدات المجاورة. 6. حساب مساحة الشرفة يتم قياسه على المساحة المحيطة بخط الوسط للجدران الفاصلة بين الوحدات، وجوانب الجدران المحيطة بالحواجز الخارجية وجوانب الشرفة المجاورة. 7. يتم قياس الوحدات على الطابق النموذجي في المبنى. قد تختلف أعمدة المقام في الحجم اعتماداً على مستوى الطابق. 8. لكل نوع وحدة، قد تختلف الأحجام والتفاصيل قليلاً. يرجى الرجوع إلى اتفاقية البيع والشراء للحصول على الحجم الفعلي لكل وحدة.





# Floor Plan

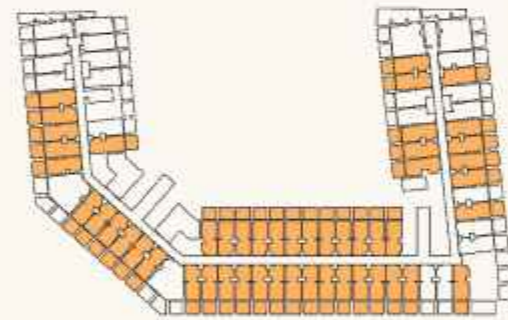
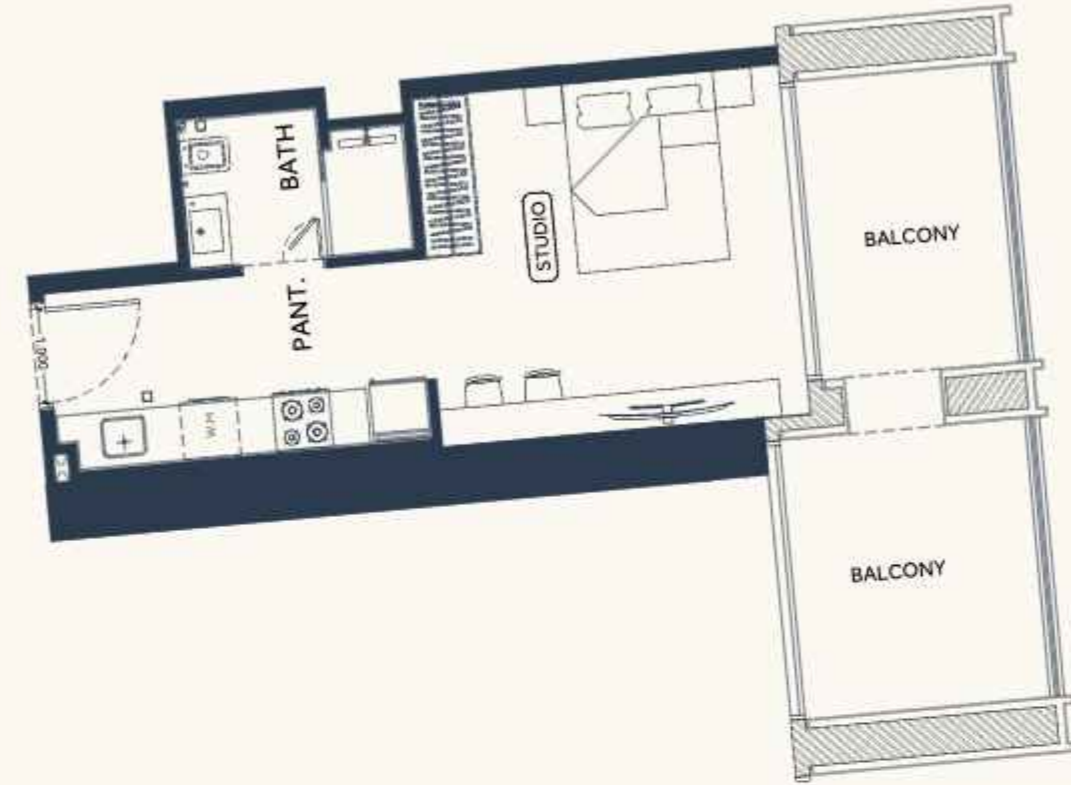
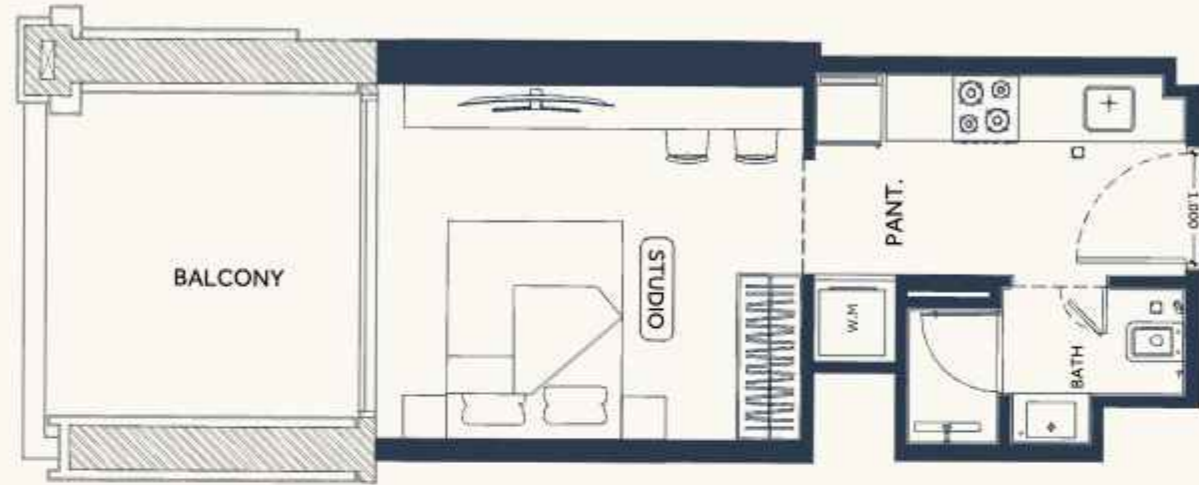
ROOF

Disclaimer: 1. All room drawings are measured to structural elements and exclude wall finishes and construction tolerances. 2. All dimensions have been provided by our contracted architect. 3. All materials, dimensions and drawings are approximate. Information is subject to change without notice. 4. Actual built area may vary from the stated area. Drawings not to scale. The developer reserves the right to make revisions. 5. Calculation of sale area is measured as the area bounded by the centre line of demising or partition walls separating one unit from another unit, the exterior face of all exterior walls, and the exterior face of the corridor wall enclosing the adjoining unit. 6. Calculation of balcony area is measured as the area bounded by the centre line of demising or partition walls separating one level from another unit, the exterior face of the enclosing board and the exterior face of the adjoining balcony. 7. The units are measured at typical floor in the building. Columns may vary in size depending on the floor level. 8. For each unit type, unit sizes and details might be slightly different. Please refer to the sales and purchase agreement for the actual size of each specific unit.

إقرار: 1. جميع الرسومات هي مقاسة إلى العناصر الهيكلية وتتجاهل التشطيبات والاختلافات الإنشائية. 2. جميع الأبعاد قد تم توفيرها من قبل المهندس المعماري. 3. جميع المواد والأبعاد والرسومات تقريبية. المعلومات عرضة للتغيير دون إشعار مسبق. 4. المساحة الفعلية قد تختلف عن المساحة المعلنة. الرسومات غير مقاسة. يحتفظ المطور بالحق في إجراء تعديلات. 5. طريقة حساب مساحة البيع هي المساحة المحيطة بخط الوسط للجدران الفاصلة بين الوحدات، والواجهة الخارجية لجميع الجدران الخارجية، والواجهة الخارجية لجدران الممرات المحيطة بالوحدات المجاورة. 6. طريقة حساب مساحة الشرفة هي المساحة المحيطة بخط الوسط للجدران الفاصلة بين المستويات، والواجهة الخارجية للعتبات والواجهة الخارجية للشرفة المجاورة. 7. الوحدات المقاسة على الطابق النموذجي في المبنى. أعمدة الأعمدة قد تختلف في الحجم اعتماداً على مستوى الطابق. 8. لكل نوع وحدة، قد تختلف الأحجام والتفاصيل قليلاً. يرجى الرجوع إلى اتفاقية البيع والشراء للحصول على الحجم الفعلي لكل وحدة.







# STUDIO Type 01

AREA	SQ.M	SQ.FT
SUITE AREA	25.99 m <sup>2</sup>	279.75 ft <sup>2</sup>
BALCONY AREA	9.69 m <sup>2</sup>	104.30 ft <sup>2</sup>
TOTAL UNIT AREA	35.68 m <sup>2</sup>	384.05 ft <sup>2</sup>

### FLAT DESIGN COMPONENTS

BATH	3 m <sup>2</sup>
STUDIO	13 m <sup>2</sup>
KITCHEN	7 m <sup>2</sup>
LAUNDRY	1 m <sup>2</sup>

# STUDIO Type 02

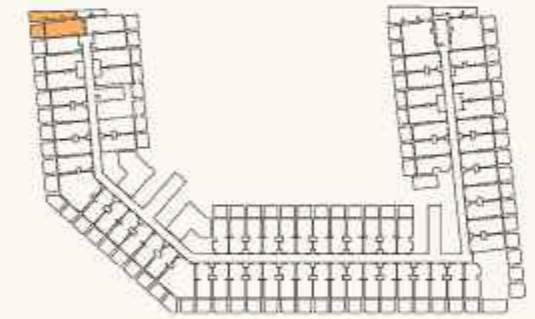
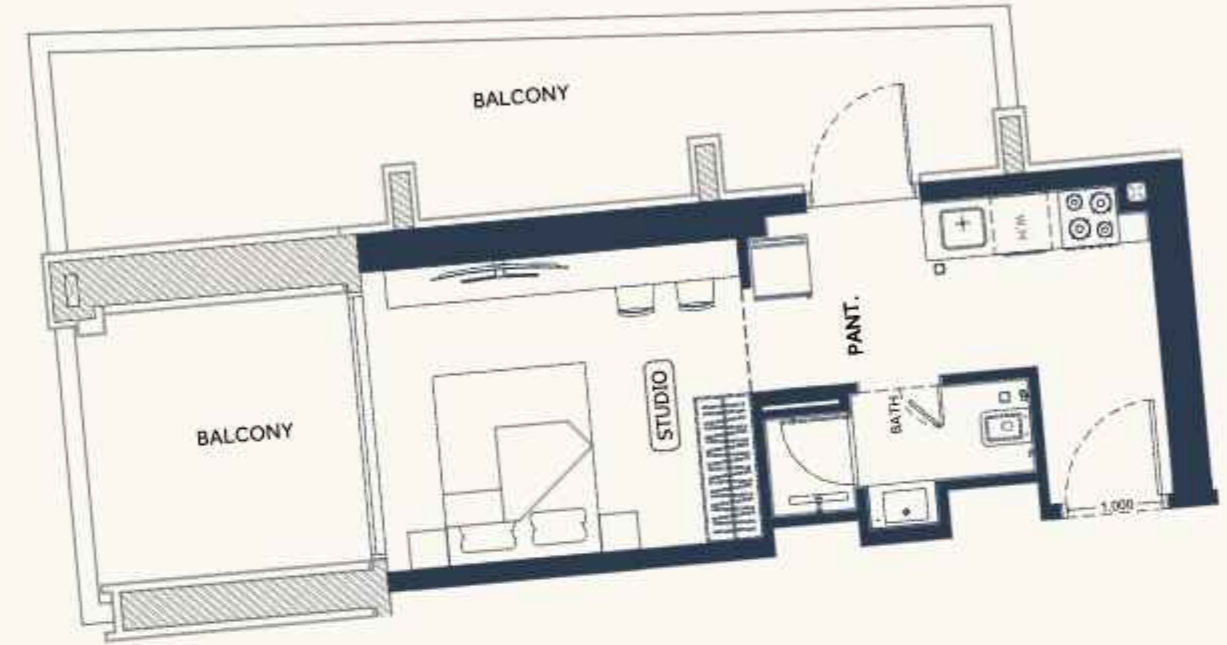
AREA	SQ. M	SQ. FT
SUITE AREA	28.74 m <sup>2</sup>	309.35 ft <sup>2</sup>
BALCONY AREA	20.73 m <sup>2</sup>	223.13 ft <sup>2</sup>
TOTAL UNIT AREA	49.47 m <sup>2</sup>	532.49 ft <sup>2</sup>

### FLAT DESIGN COMPONENTS

BATH	4 m <sup>2</sup>
STUDIO	14 m <sup>2</sup>
KITCHEN	8 m <sup>2</sup>

Disclaimer: 1. All room dimensions are measured by structural elements and exclude wall finishes and construction tolerances. 2. All dimensions have been provided by our structural architect. 3. All materials, dimensions and drawings are approximate. Information is subject to change without notice. 4. Actual suite area may vary from the stated area. Drawings not to scale. The Developer reserves the right to make revisions. 5. Calculation of suite area is measured as the area bounded by the centre line of demising or partition walls separating one unit from another unit, the exterior face of all exterior walls, and the exterior face of the corridor wall enclosing the adjoining unit. 6. Calculation of balcony area is measured as the area bounded by the centre line of demising or partition walls separating one unit from another unit, the exterior face of the enclosing guard and the exterior face of the adjoining balcony. 7. The units are measured at typical floor in the building. Balcony area may vary in size depending on the floor level. 8. For each unit type, unit sizes and areas might be slightly different. Please refer to the sales and purchase agreement for the actual size of each specific unit.

إشعار: 1. جميع أبعاد الغرف هي مقاسة بواسطة العناصر الهيكلية وتتجاهل دعامات الجدران والسمك الإنشائي. 2. جميع الأبعاد قد تم توفيرها من قبل المهندس المعماري الهيكلي. 3. جميع المواد والأبعاد والرسومات هي تقريبية. المعلومات هي عرضة للتغيير دون إشعار مسبق. 4. المساحة الفعلية للغرفة قد تختلف عن المساحة المعلنة. الرسومات ليست بالقياس. 5. حساب مساحة الغرفة يتم قياسه على خط الوسط للجدران الفاصلة بين الوحدات، الوجه الخارجي لجميع الجدران الخارجية، والوجه الخارجي للجدران المحيطة بالوحدات المجاورة. 6. حساب مساحة الشرفة يتم قياسه على خط الوسط للجدران الفاصلة بين الوحدات، الوجه الخارجي للجدران المحيطة بالشرفة، والوجه الخارجي للجدران المجاورة للشرفة. 7. يتم قياس الوحدات على الطابق النموذجي في المبنى. قد تختلف مساحة الشرفة في الحجم اعتماداً على مستوى الطابق. 8. لكل نوع وحدة، قد تختلف الأحجام والمساحات قليلاً. يرجى الرجوع إلى اتفاقية البيع والشراء للحصول على الحجم الفعلي لكل وحدة محددة.



# STUDIO Type 03

AREA	SQ. M	SQ. FT
SUITE AREA	25.40 m <sup>2</sup>	273.40 ft <sup>2</sup>
BALCONY AREA	9.08 m <sup>2</sup>	97.73 ft <sup>2</sup>
TOTAL UNIT AREA	34.48 m <sup>2</sup>	371.13 ft <sup>2</sup>

### FLAT DESIGN COMPONENTS

BATH	3 m <sup>2</sup>
STUDIO	13 m <sup>2</sup>
KITCHEN	6 m <sup>2</sup>

# STUDIO Type 04

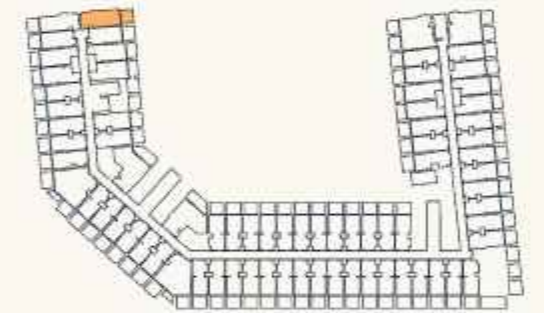
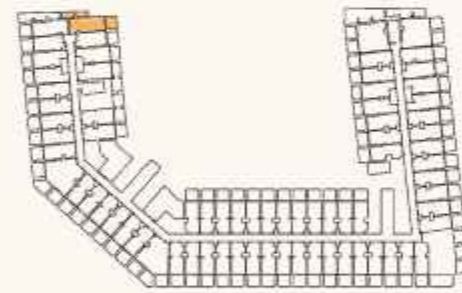
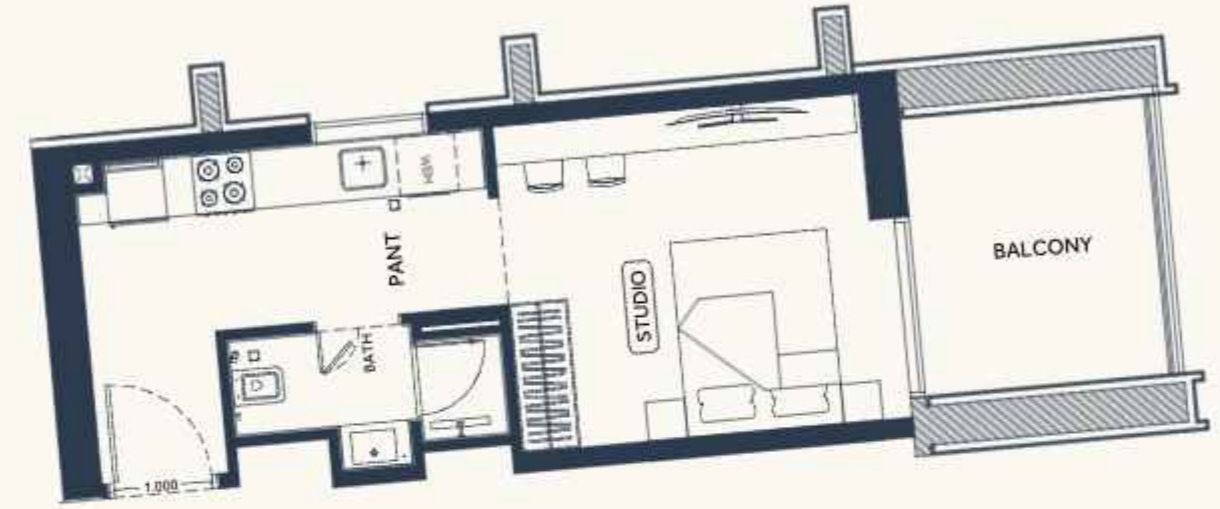
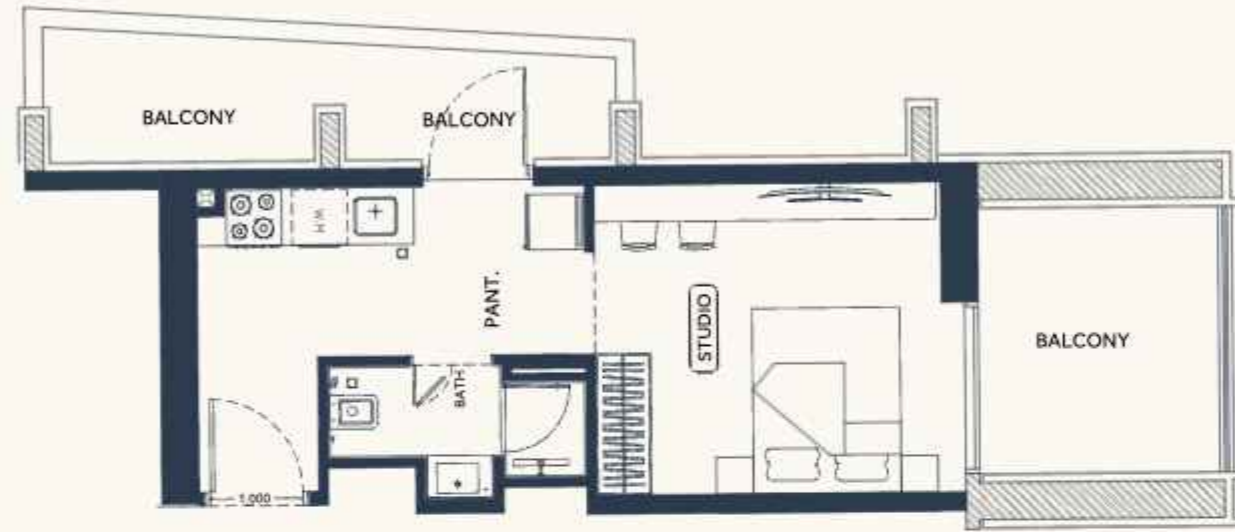
AREA	SQ. M	SQ. FT
SUITE AREA	29.44 m <sup>2</sup>	316.88 ft <sup>2</sup>
BALCONY AREA	32.96 m <sup>2</sup>	354.77 ft <sup>2</sup>
TOTAL UNIT AREA	62.40 m <sup>2</sup>	671.66 ft <sup>2</sup>

### FLAT DESIGN COMPONENTS

BATH	3 m <sup>2</sup>
STUDIO	12 m <sup>2</sup>
KITCHEN	8 m <sup>2</sup>
CORRIDOR	2 m <sup>2</sup>

Disclaimer: 1. All room dimensions are measured by structural elements and exclude wall finishes and construction tolerances. 2. All dimensions have been provided by our structural architect. 3. All materials, dimensions and drawings are approximate. Information is subject to change without notice. 4. Actual built area may vary from the stated area. Drawings not to scale. The Developer reserves the right to make revisions. 5. Calculation of suite area is measured as the area bounded by the centre line of demising or partition walls separating one unit from another unit, the exterior face of all exterior walls, and the exterior face of the corridor wall enclosing the adjoining unit. 6. Calculation of balcony area is measured as the area bounded by the centre line of demising or partition walls separating one unit from another unit, the exterior face of the enclosing guard and the exterior face of the adjoining balcony. 7. The units are measured at typical floor in the building. Balcony area may vary in size depending on the floor level. 8. For each unit type, unit sizes and areas might be slightly different. Please refer to the sales and purchase agreement for the actual size of each specific unit.

إشعار: 1. جميع الأبعاد المقاسة هي المقاسة بين العناصر الإنشائية وتتجاهل طلاء الجدران والمواد الإنشائية. 2. جميع الأبعاد قد تم توفيرها من قبل المهندس المعماري الإنشائي. 3. جميع المواد والأبعاد والرسومات تقريبية. المعلومات عرضة للتغيير دون إشعار مسبق. 4. المساحة الفعلية المبنية قد تختلف عن المساحة المعلنة. الرسومات غير مبنية على مقياس. يحتفظ المطور بالحق في إجراء التعديلات. 5. حساب مساحة المسكن المقاس على المساحة المحيطة بالخطوط الوسطى للجدران الفاصلة بين الوحدات، الوجه الخارجي لجميع الجدران الخارجية، والوجه الخارجي للجدران المحيطة بالممرات المحيطة بالوحدات المجاورة. 6. حساب مساحة التراس المقاس على المساحة المحيطة بالخطوط الوسطى للجدران الفاصلة بين الوحدات، الوجه الخارجي للجدران المحيطة بالحواجز والوجه الخارجي للجدران المحيطة بالتراس المجاور. 7. يتم قياس الوحدات على الطابق النموذجي في المبنى. قد يختلف حجم التراس باختلاف الطابق. 8. لكل نوع وحدة، قد تختلف أحجام ومساحات الوحدات قليلاً. يرجى الرجوع إلى اتفاقية البيع والشراء للحصول على الحجم الفعلي لكل وحدة محددة.



# STUDIO Type 05

AREA	SQ. M	SQ. FT
SUITE AREA	29.82 m <sup>2</sup>	320.97 ft <sup>2</sup>
BALCONY AREA	27.79 m <sup>2</sup>	299.12 ft <sup>2</sup>
TOTAL UNIT AREA	57.61 m <sup>2</sup>	620.10 ft <sup>2</sup>

## FLAT DESIGN COMPONENTS

BATH	3 m <sup>2</sup>
STUDIO	13 m <sup>2</sup>
KITCHEN	8 m <sup>2</sup>
CORRIDOR	2 m <sup>2</sup>

# STUDIO Type 06

AREA	SQ. M	SQ. FT
SUITE AREA	29.91 m <sup>2</sup>	321.94 ft <sup>2</sup>
BALCONY AREA	9.04 m <sup>2</sup>	97.30 ft <sup>2</sup>
TOTAL UNIT AREA	38.95 m <sup>2</sup>	419.25 ft <sup>2</sup>

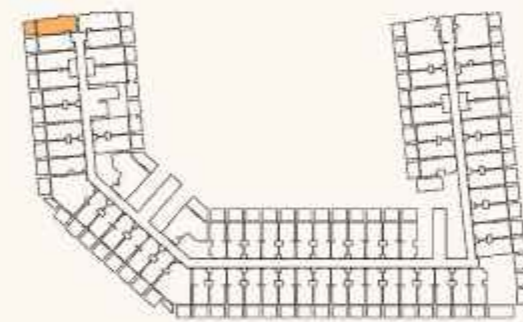
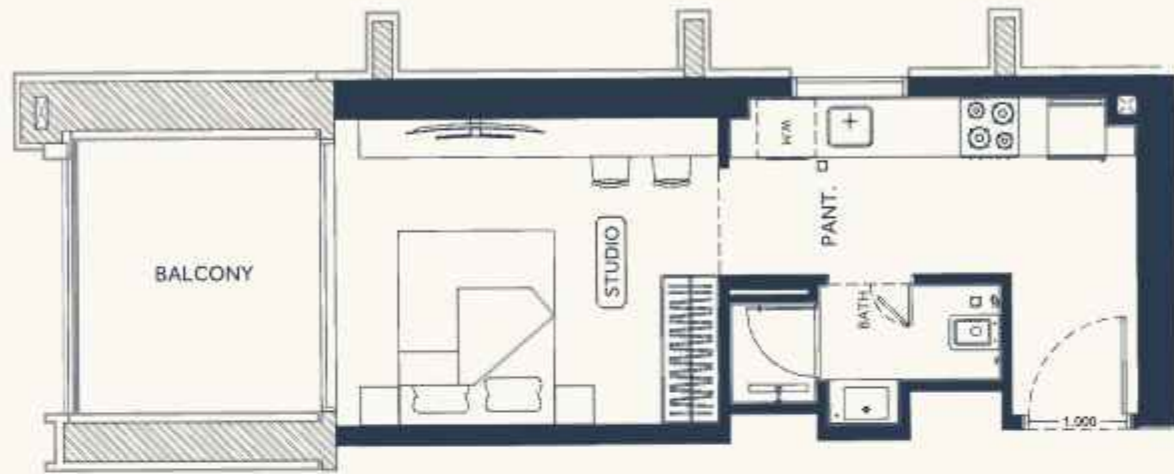
## FLAT DESIGN COMPONENTS

BATH	3 m <sup>2</sup>
STUDIO	13 m <sup>2</sup>
KITCHEN	8 m <sup>2</sup>
CORRIDOR	2 m <sup>2</sup>

Disclaimer: 1. All room dimensions are measured by structural elements and exclude wall finishes and construction tolerances. 2. All dimensions have been provided by our structural architect. 3. All materials, dimensions and drawings are approximate. Information is subject to change without notice. 4. Actual suite area may vary from the stated area. Drawings not to scale. The Developer reserves the right to make revisions. 5. Calculation of suite area is measured as the area bounded by the centre line of demising or partition walls separating one unit from another unit, the exterior face of all exterior walls, and the exterior face of the corridor wall enclosing the adjoining unit. 6. Calculation of balcony area is measured as the area bounded by the centre line of demising or partition walls separating one unit from another unit, the exterior face of the enclosing guard and the exterior face of the adjoining balcony. 7. The units are measured at typical floor in the building. Balcony area may vary in size depending on the floor level. 8. For each unit type, unit sizes and areas might be slightly different. Please refer to the sales and purchase agreement for the actual size of each specific unit.

إشعار: 1. جميع الأبعاد المقاسة هي المقاسة بين العناصر الإنشائية وتتجاهل طلاء الجدران والمواد الإنشائية. 2. جميع الأبعاد قد تم توفيرها من قبل المهندس المعماري الإنشائي. 3. جميع المواد والأبعاد والرسومات هي تقريبية. المعلومات عرضة للتغيير دون إشعار مسبق. 4. المساحة الفعلية للوحدات قد تختلف عن المساحة المعلنة. الرسومات ليست بالقياس. 5. يتم قياس مساحة الوحدة كالمساحة المحيطة بالخطوط الوسطى للجدران الفاصلة بين الوحدات، وجوانب الجدران الخارجية، وجوانب الجدران المحيطة بالمرور المحيطة بالوحدات المجاورة. 6. يتم قياس مساحة الشرفة كالمساحة المحيطة بالخطوط الوسطى للجدران الفاصلة بين الوحدات، وجوانب الجدران الخارجية، وجوانب الجدران المحيطة بالحماية المحيطة بالشرفة المجاورة. 7. يتم قياس الوحدات على الطابق النموذجي في المبنى. قد يختلف حجم الشرفة باختلاف الطابق. 8. لكل نوع وحدة، قد تختلف الأحجام والمساحات قليلاً. يرجى الرجوع إلى اتفاقية البيع والشراء للحصول على الحجم الفعلي لكل وحدة محددة.





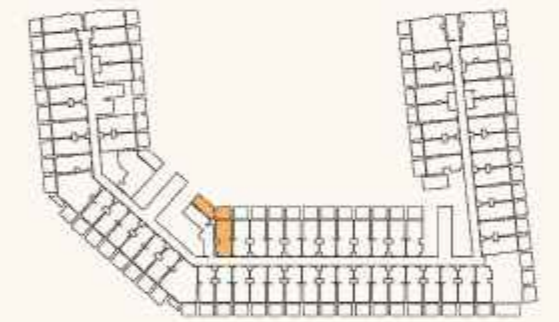
AREA	SQ.M	SQ.FT
SUITE AREA	29.53 m <sup>2</sup>	317.85 ft <sup>2</sup>
BALCONY AREA	8.96 m <sup>2</sup>	96.44 ft <sup>2</sup>
TOTAL UNIT AREA	38.49 m <sup>2</sup>	414.30 ft <sup>2</sup>

#### FLAT DESIGN COMPONENTS

BATH	3 m <sup>2</sup>
STUDIO	12 m <sup>2</sup>
KITCHEN	8 m <sup>2</sup>
CORRIDOR	2 m <sup>2</sup>

## STUDIO Type 07

Disclaimer: 1. All room dimensions are measured to structural elements and exclude wall finishes and construction tolerances. 2. All dimensions have been provided by our structural architect. 3. All materials, dimensions and drawings are approximate. Information is subject to change without notice. 4. Actual suite area may vary from the stated area. Drawings not to scale. The Developer reserves the right to make revisions. 5. Calculation of suite area is measured as the area bounded by the centre line of demising or partition walls separating one unit from another unit, the exterior face of all exterior walls, and the exterior face of the corridor wall enclosing the adjoining unit. 6. Calculation of balcony area is measured as the area bounded by the centre line of demising or partition walls separating one unit from another unit, the exterior face of the enclosing guard and the exterior face of the adjoining balcony. 7. The units are measured at typical floor in the building. Balcony area may vary in size depending on the floor level. 8. For each unit type, unit sizes and areas might be slightly different. Please refer to the sales and purchase agreement for the actual size of each specific unit.



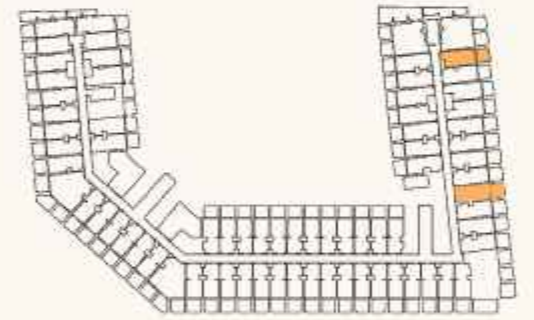
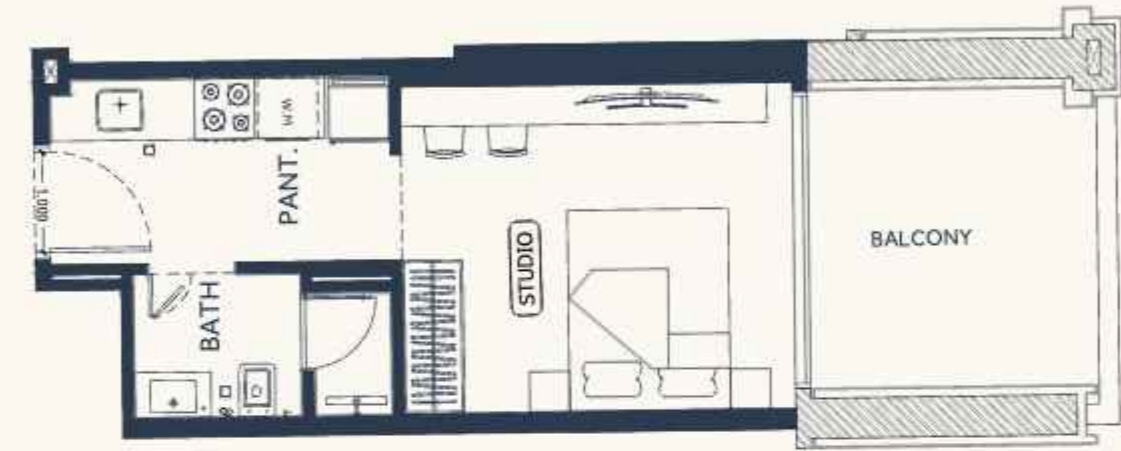
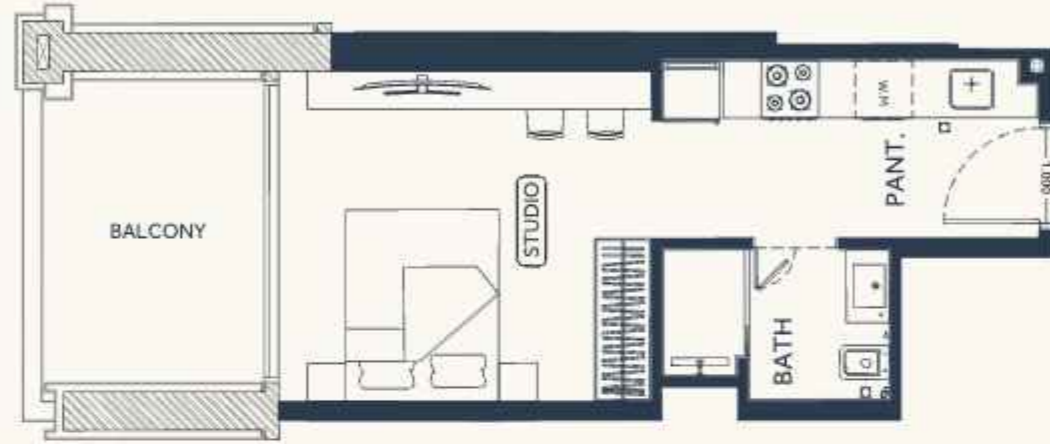
AREA	SQ.M	SQ.FT
SUITE AREA	26.97 m <sup>2</sup>	290.30 ft <sup>2</sup>
BALCONY AREA	21.60 m <sup>2</sup>	232.50 ft <sup>2</sup>
TOTAL UNIT AREA	48.57 m <sup>2</sup>	522.80 ft <sup>2</sup>

#### FLAT DESIGN COMPONENTS

BATH	3 m <sup>2</sup>
STUDIO	13 m <sup>2</sup>
KITCHEN	6 m <sup>2</sup>
LAUNDRY	1 m <sup>2</sup>

## STUDIO Type 08

Disclaimer: 1. All room dimensions are measured to structural elements and exclude wall finishes and construction tolerances. 2. All dimensions have been provided by our structural architect. 3. All materials, dimensions and drawings are approximate. Information is subject to change without notice. 4. Actual suite area may vary from the stated area. Drawings not to scale. The Developer reserves the right to make revisions. 5. Calculation of suite area is measured as the area bounded by the centre line of demising or partition walls separating one unit from another unit, the exterior face of all exterior walls, and the exterior face of the corridor wall enclosing the adjoining unit. 6. Calculation of balcony area is measured as the area bounded by the centre line of demising or partition walls separating one unit from another unit, the exterior face of the enclosing guard and the exterior face of the adjoining balcony. 7. The units are measured at typical floor in the building. Balcony area may vary in size depending on the floor level. 8. For each unit type, unit sizes and areas might be slightly different. Please refer to the sales and purchase agreement for the actual size of each specific unit.



# STUDIO Type 09

AREA	SQ.M	SQ.FT
SUITE AREA	25.90 m <sup>2</sup>	278.78 ft <sup>2</sup>
BALCONY AREA	9.08 m <sup>2</sup>	97.73 ft <sup>2</sup>
TOTAL UNIT AREA	34.98 m <sup>2</sup>	376.52 ft <sup>2</sup>

## FLAT DESIGN COMPONENTS

BATH	4 m <sup>2</sup>
STUDIO	13 m <sup>2</sup>
KITCHEN	8 m <sup>2</sup>

# STUDIO Type 10

AREA	SQ.M	SQ.FT
SUITE AREA	25.92 m <sup>2</sup>	279.00 ft <sup>2</sup>
BALCONY AREA	9.08 m <sup>2</sup>	97.73 ft <sup>2</sup>
TOTAL UNIT AREA	35.00 m <sup>2</sup>	376.73 ft <sup>2</sup>

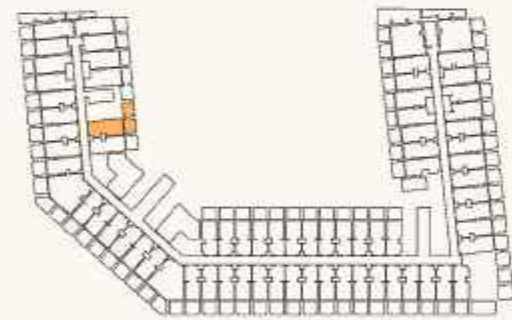
## FLAT DESIGN COMPONENTS

BATH	4 m <sup>2</sup>
STUDIO	13 m <sup>2</sup>
KITCHEN	7 m <sup>2</sup>

Disclaimer: 1. All room dimensions are measured by structural elements and exclude wall finishes and construction tolerances. 2. All dimensions have been provided by our structural architect. 3. All materials, dimensions and drawings are approximate. Information is subject to change without notice. 4. Actual suite area may vary from the stated area. Drawings not to scale. The Developer reserves the right to make revisions. 5. Calculation of suite area is measured as the area bounded by the centre line of demising or partition walls separating one unit from another unit, the exterior face of all exterior walls, and the exterior face of the corridor wall enclosing the adjoining unit. 6. Calculation of balcony area is measured as the area bounded by the centre line of demising or partition walls separating one unit from another unit, the exterior face of the enclosing guard and the exterior face of the adjoining balcony. 7. The units are measured at typical floor in the building. Balcony area may vary in size depending on the floor level. 8. For each unit type, unit sizes and areas might be slightly different. Please refer to the sales and purchase agreement for the actual size of each specific unit.

إشعار: 1. جميع أبعاد الغرف هي مقاسة بواسطة العناصر الهيكلية وتتجاهل دعامات الجدران والسمك الإنشائي. 2. جميع الأبعاد قد تم توفيرها من قبل المهندس المعماري الهيكلي. 3. جميع المواد والأبعاد والرسومات هي تقريبية. المعلومات هي عرضة للتغيير دون إشعار مسبق. 4. المساحة الفعلية للغرفة قد تختلف عن المساحة المذكورة. الرسومات ليست بالقياس. 5. حساب مساحة الغرفة يتم قياسها على خط الوسط للجدران الفاصلة بين الوحدات، الوجه الخارجي لجميع الجدران الخارجية، والوجه الخارجي للجدران المحيطة بالوحدات المجاورة. 6. حساب مساحة التراس يتم قياسها على خط الوسط للجدران الفاصلة بين الوحدات، الوجه الخارجي للجدران المحيطة بالتراس، والوجه الخارجي للجدران المحيطة بالتراس المجاور. 7. يتم قياس الوحدات على الطابق النموذجي في المبنى. قد يختلف مساحة التراس باختلاف الطابق. 8. لكل نوع وحدة، قد تختلف أحجام ومساحات الوحدات قليلاً. يرجى الرجوع إلى اتفاقية البيع والشراء للحصول على الحجم الفعلي لكل وحدة محددة.





# STUDIO Type 11

AREA	SQ.M	SQ.FT
SUITE AREA	28.37 m <sup>2</sup>	305.37 ft <sup>2</sup>
BALCONY AREA	19.53 m <sup>2</sup>	210.21 ft <sup>2</sup>
TOTAL UNIT AREA	47.90 m <sup>2</sup>	515.59 ft <sup>2</sup>

## FLAT DESIGN COMPONENTS

BATH	3 m <sup>2</sup>
STUDIO	13 m <sup>2</sup>
KITCHEN	7 m <sup>2</sup>
LAUNDRY	1 m <sup>2</sup>

Disclaimer: 1. All room dimensions are measured by structural elements and exclude wall finishes and construction tolerances. 2. All dimensions have been provided by our structural architect. 3. All materials, dimensions and drawings are approximate. Information is subject to change without notice. 4. Actual suite area may vary from the stated area. Drawings not to scale. The Developer reserves the right to make revisions. 5. Calculation of suite area is measured as the area bounded by the centre line of demising or partition walls separating one unit from another unit, the exterior face of all exterior walls, and the exterior face of the corridor wall enclosing the adjoining unit. 6. Calculation of balcony area is measured as the area bounded by the centre line of demising or partition walls separating one unit from another unit, the exterior face of the enclosing guard and the exterior face of the adjoining balcony. 7. The units are measured at typical floor in the building. Suite area may vary in size depending on the floor level. 8. For each unit type, unit sizes and areas might be slightly different. Please refer to the sales and purchase agreement for the actual size of each specific unit.

# STUDIO Isometric View

AREA	SQ.M	SQ.FT
SUITE AREA	28.37 m <sup>2</sup>	305.37 ft <sup>2</sup>
BALCONY AREA	19.53 m <sup>2</sup>	210.21 ft <sup>2</sup>
TOTAL UNIT AREA	47.90 m <sup>2</sup>	515.59 ft <sup>2</sup>

## FLAT DESIGN COMPONENTS

BATH	3 m <sup>2</sup>
STUDIO	13 m <sup>2</sup>
KITCHEN	7 m <sup>2</sup>
LAUNDRY	1 m <sup>2</sup>

Disclaimer: 1. All room dimensions are measured by structural elements and exclude wall finishes and construction tolerances. 2. All dimensions have been provided by our structural architect. 3. All materials, dimensions and drawings are approximate. Information is subject to change without notice. 4. Actual suite area may vary from the stated area. Drawings not to scale. The Developer reserves the right to make revisions. 5. Calculation of suite area is measured as the area bounded by the centre line of demising or partition walls separating one unit from another unit, the exterior face of all exterior walls, and the exterior face of the corridor wall enclosing the adjoining unit. 6. Calculation of balcony area is measured as the area bounded by the centre line of demising or partition walls separating one unit from another unit, the exterior face of the enclosing guard and the exterior face of the adjoining balcony. 7. The units are measured at typical floor in the building. Suite area may vary in size depending on the floor level. 8. For each unit type, unit sizes and areas might be slightly different. Please refer to the sales and purchase agreement for the actual size of each specific unit.





# 1 BEDROOM Type 01

AREA	SQ.M	SQ.FT
SUITE AREA	55.24 m <sup>2</sup>	594.59 ft <sup>2</sup>
BALCONY AREA	28.52 m <sup>2</sup>	306.98 ft <sup>2</sup>
TOTAL UNIT AREA	83.76 m <sup>2</sup>	901.58 ft <sup>2</sup>

### FLAT DESIGN COMPONENTS

BATH	3 m <sup>2</sup>
BEDROOM	13 m <sup>2</sup>
LIVING & DINING	19 m <sup>2</sup>
KITCHEN	8 m <sup>2</sup>
CORRIDOR	6 m <sup>2</sup>
LAUNDRY	1 m <sup>2</sup>

Disclaimer: 1. All room dimensions are measured by structural elements and exclude wall finishes and construction tolerances. 2. All dimensions have been provided by our structural architect. 3. All materials, dimensions and drawings are approximate. Information is subject to change without notice. 4. Actual built area may vary from the stated area. Drawings not to scale. The developer reserves the right to make revisions. 5. Calculation of suite area is measured as the area bounded by the centre line of demising or partition walls separating one unit from another unit, the exterior face of all exterior walls, and the exterior face of the corridor wall enclosing the adjoining unit. 6. Calculation of balcony area is measured as the area bounded by the centre line of demising or partition walls separating one unit from another unit, the exterior face of the enclosing guard and the exterior face of the adjoining balcony. 7. The units are measured at typical floor in the building. Balcony area may vary in size depending on the floor level. 8. For each unit type, unit sizes and areas might be slightly different. Please refer to the sales and purchase agreement for the actual size of each specific unit.



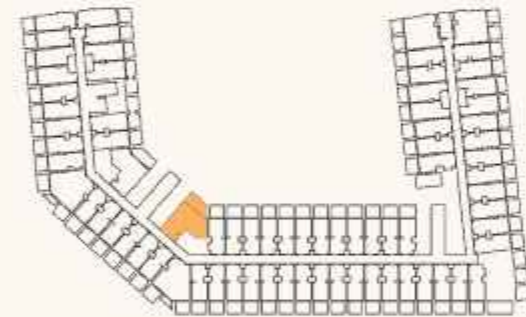
# 1 BEDROOM Type 02

AREA	SQ. M	SQ. FT
SUITE AREA	50.13 m <sup>2</sup>	539.59 ft <sup>2</sup>
BALCONY AREA	12.66 m <sup>2</sup>	136.27 ft <sup>2</sup>
TOTAL UNIT AREA	62.79 m <sup>2</sup>	675.86 ft <sup>2</sup>

### FLAT DESIGN COMPONENTS

BATH	4 m <sup>2</sup>
BEDROOM	15 m <sup>2</sup>
LIVING & DINING	15 m <sup>2</sup>
KITCHEN	5 m <sup>2</sup>
CORRIDOR	3 m <sup>2</sup>

Disclaimer: 1. All room dimensions are measured by structural elements and exclude wall finishes and construction tolerances. 2. All dimensions have been provided by our structural architect. 3. All materials, dimensions and drawings are approximate. Information is subject to change without notice. 4. Actual built area may vary from the stated area. Drawings not to scale. The developer reserves the right to make revisions. 5. Calculation of suite area is measured as the area bounded by the centre line of demising or partition walls separating one unit from another unit, the exterior face of all exterior walls, and the exterior face of the corridor wall enclosing the adjoining unit. 6. Calculation of balcony area is measured as the area bounded by the centre line of demising or partition walls separating one unit from another unit, the exterior face of the enclosing guard and the exterior face of the adjoining balcony. 7. The units are measured at typical floor in the building. Balcony area may vary in size depending on the floor level. 8. For each unit type, unit sizes and areas might be slightly different. Please refer to the sales and purchase agreement for the actual size of each specific unit.



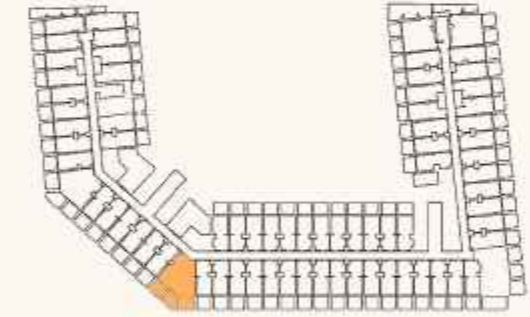
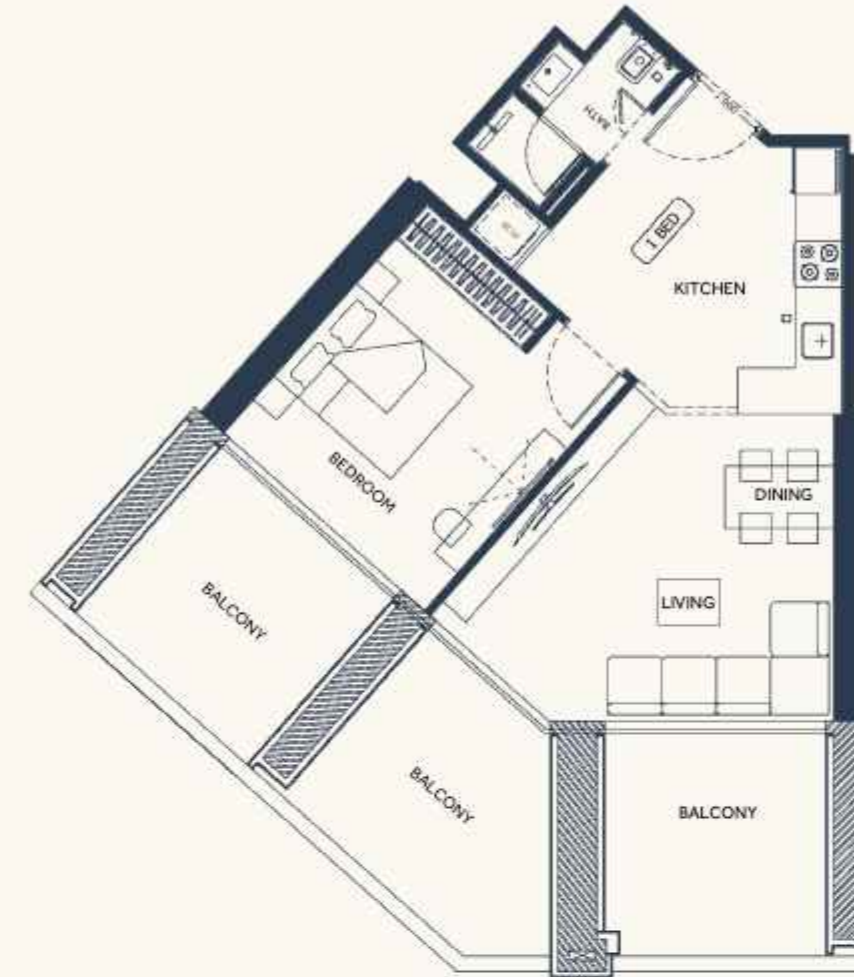
AREA	SQ.M	SQ.FT
SUITE AREA	48.30 m <sup>2</sup>	519.89 ft <sup>2</sup>
BALCONY AREA	12.52 m <sup>2</sup>	134.76 ft <sup>2</sup>
TOTAL UNIT AREA	60.82 m <sup>2</sup>	654.66 ft <sup>2</sup>

#### FLAT DESIGN COMPONENTS

BATH	4 m <sup>2</sup>
BEDROOM	14 m <sup>2</sup>
LIVING & DINING	15 m <sup>2</sup>
KITCHEN	5 m <sup>2</sup>
CORRIDOR	3 m <sup>2</sup>

## 1 BEDROOM Type 03

Disclaimer: 1. All room dimensions are measured by structural elements and exclude wall finishes and distribution services. 2. All dimensions have been provided by our structural architect. 3. All materials, dimensions and drawings are approximate. Information is subject to change without notice. 4. Actual suite area may vary from the stated area. Drawings not to scale. The developer reserves the right to make revisions. 5. Calculation of suite area is measured as the area bounded by the centre line of demising or partition walls separating one unit from another unit, the exterior face of all exterior walls, and the exterior face of the corridor wall enclosing the adjoining unit. 6. Calculation of balcony area is measured as the area bounded by the centre line of demising or partition walls separating one unit from another unit, the exterior face of the enclosing guard and the exterior face of the adjoining balcony. 7. The units are measured at typical floor in the building. Balcony area may vary in size depending on the floor level. 8. For each unit type, unit sizes and areas might be slightly different. Please refer to the sales and purchase agreement for the actual size of each specific unit.



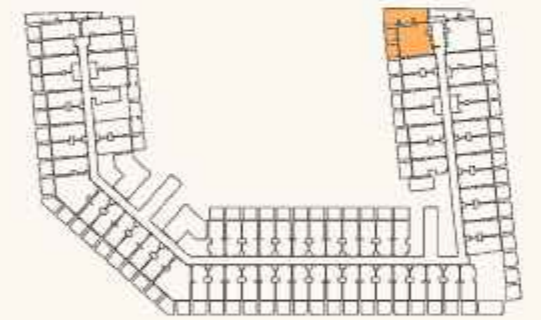
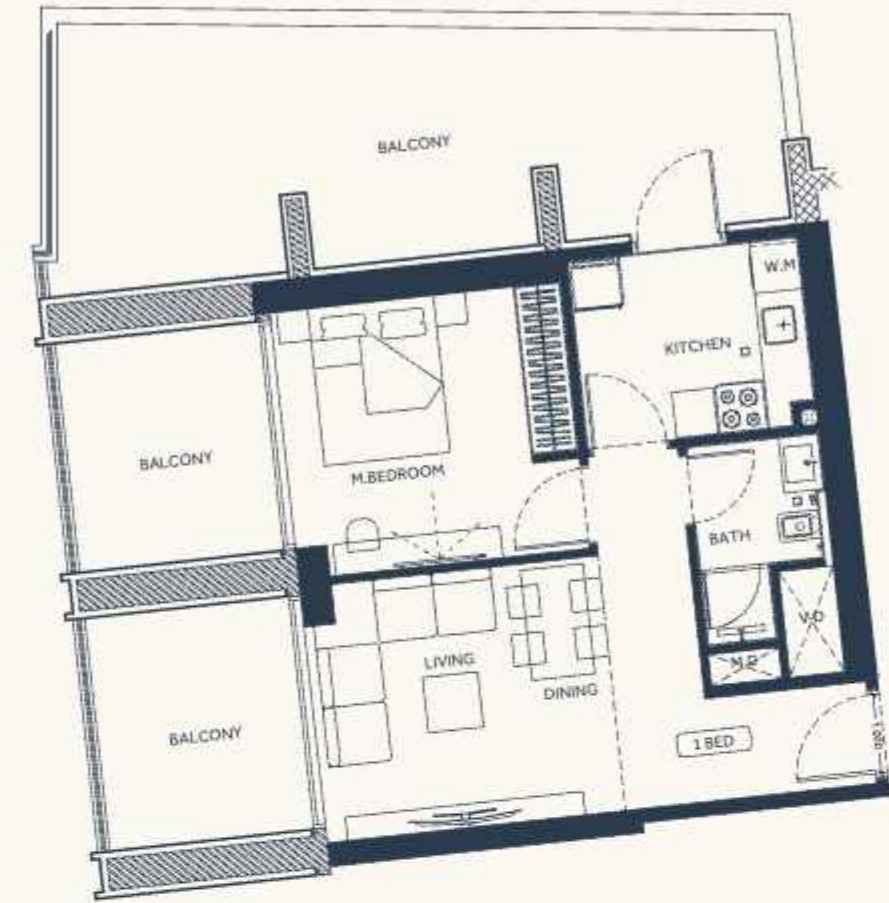
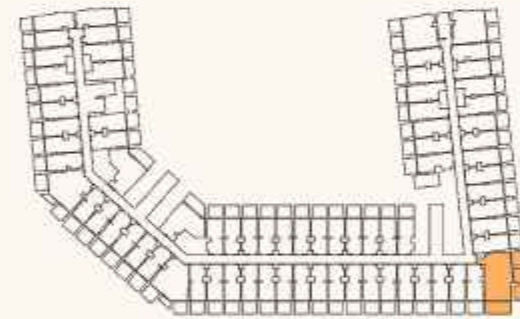
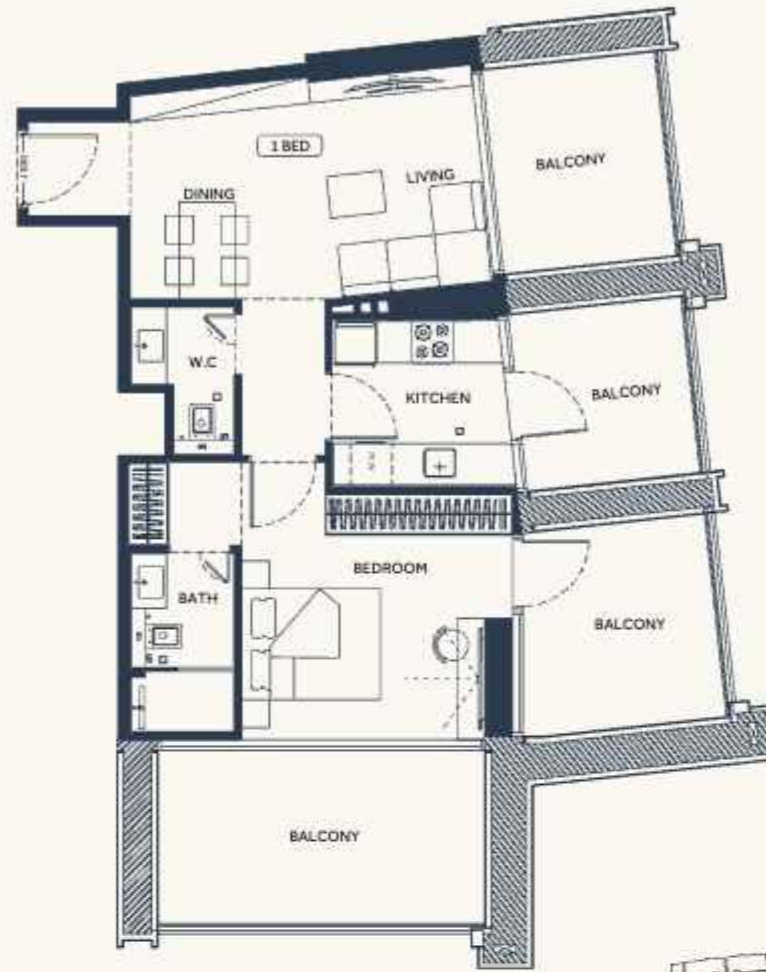
AREA	SQ.M	SQ.FT
SUITE AREA	51.23 m <sup>2</sup>	551.43 ft <sup>2</sup>
BALCONY AREA	29.35 m <sup>2</sup>	315.92 ft <sup>2</sup>
TOTAL UNIT AREA	80.58 m <sup>2</sup>	867.35 ft <sup>2</sup>

#### FLAT DESIGN COMPONENTS

BATH	3 m <sup>2</sup>
BEDROOM	14 m <sup>2</sup>
LIVING & DINING	17 m <sup>2</sup>
KITCHEN	8 m <sup>2</sup>
CORRIDOR	5 m <sup>2</sup>
LAUNDRY	1 m <sup>2</sup>

## 1 BEDROOM Type 04

Disclaimer: 1. All room dimensions are measured by structural elements and exclude wall finishes and distribution services. 2. All dimensions have been provided by our structural architect. 3. All materials, dimensions and drawings are approximate. Information is subject to change without notice. 4. Actual suite area may vary from the stated area. Drawings not to scale. The developer reserves the right to make revisions. 5. Calculation of suite area is measured as the area bounded by the centre line of demising or partition walls separating one unit from another unit, the exterior face of all exterior walls, and the exterior face of the corridor wall enclosing the adjoining unit. 6. Calculation of balcony area is measured as the area bounded by the centre line of demising or partition walls separating one unit from another unit, the exterior face of the enclosing guard and the exterior face of the adjoining balcony. 7. The units are measured at typical floor in the building. Balcony area may vary in size depending on the floor level. 8. For each unit type, unit sizes and areas might be slightly different. Please refer to the sales and purchase agreement for the actual size of each specific unit.



# 1 BEDROOM Type 05

AREA	SQ.M	SQ.FT
SUITE AREA	60.69 m <sup>2</sup>	653.26 ft <sup>2</sup>
BALCONY AREA	46.32 m <sup>2</sup>	498.58 ft <sup>2</sup>
TOTAL UNIT AREA	107.01 m <sup>2</sup>	1151.84 ft <sup>2</sup>

### FLAT DESIGN COMPONENTS

M.BATH	4m <sup>2</sup>
M.BEDROOM	16m <sup>2</sup>
LIVING & DINING	16m <sup>2</sup>
KITCHEN	6 m <sup>2</sup>
CORRIDOR	5m <sup>2</sup>
WC	3m <sup>2</sup>

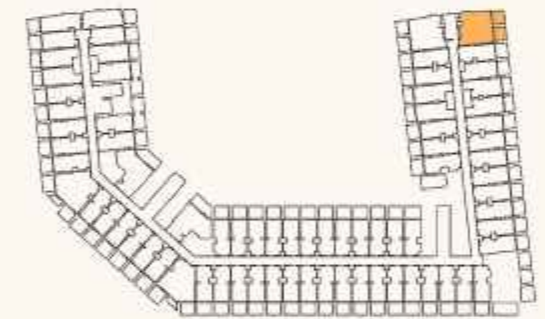
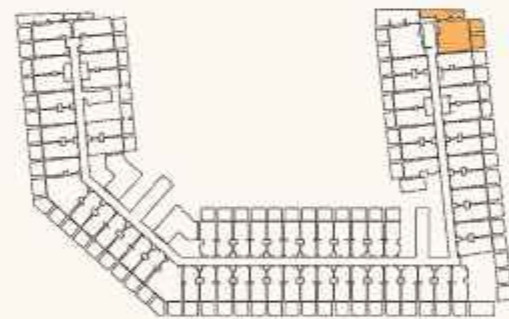
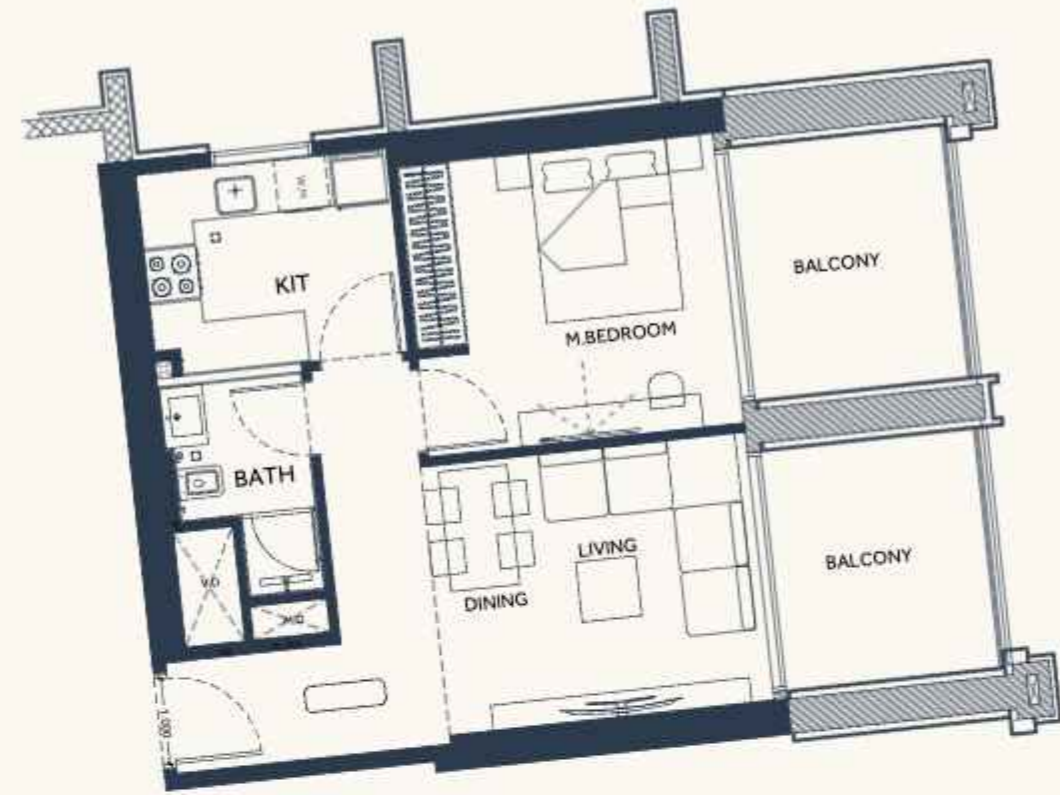
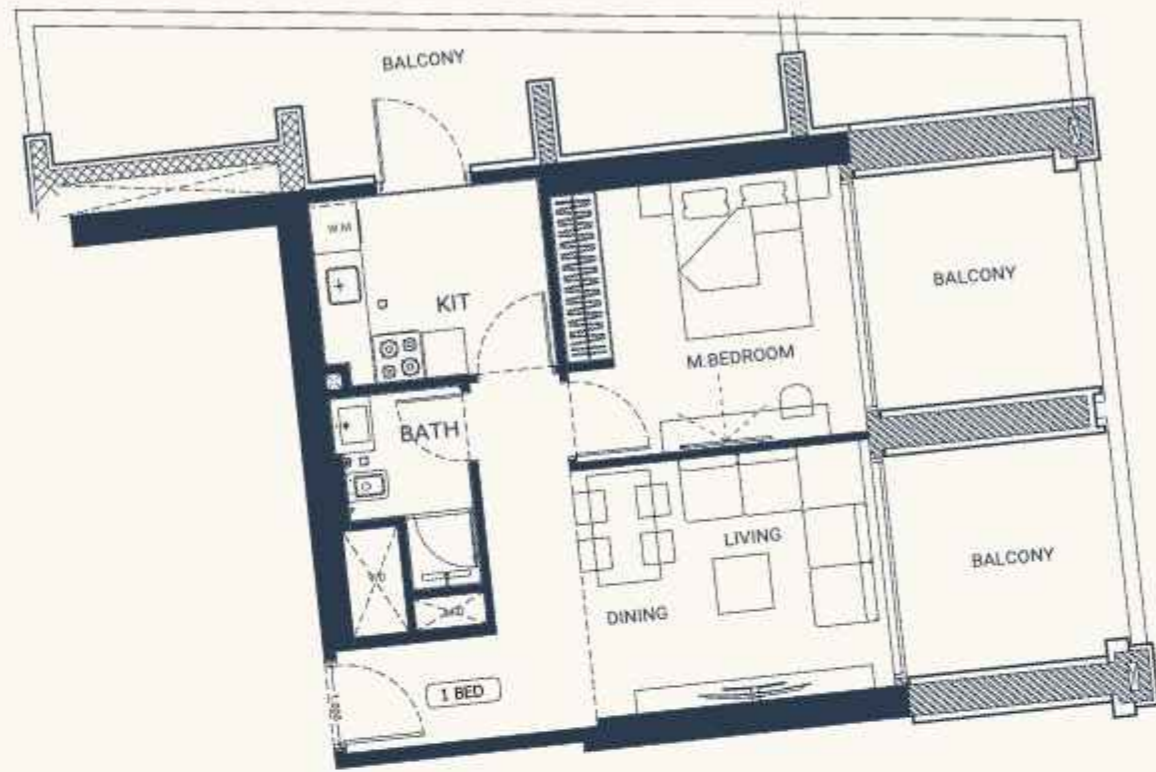
# 1 BEDROOM Type 06

AREA	SQ.M	SQ.FT
SUITE AREA	48.55 m <sup>2</sup>	522.58 ft <sup>2</sup>
BALCONY AREA	59.76 m <sup>2</sup>	643.25 ft <sup>2</sup>
TOTAL UNIT AREA	108.31 m <sup>2</sup>	1165.83 ft <sup>2</sup>

### FLAT DESIGN COMPONENTS

BATH	4m <sup>2</sup>
BEDROOM	12m <sup>2</sup>
LIVING & DINING	12m <sup>2</sup>
KITCHEN	7m <sup>2</sup>
CORRIDOR	8m <sup>2</sup>





# 1 BEDROOM Type 07

AREA	SQ.M	SQ.FT
SUITE AREA	47.91 m <sup>2</sup>	515.69 ft <sup>2</sup>
BALCONY AREA	44.28 m <sup>2</sup>	476.62 ft <sup>2</sup>
TOTAL UNIT AREA	92.19 m <sup>2</sup>	992.32 ft <sup>2</sup>

### FLAT DESIGN COMPONENTS

BATH	4m <sup>2</sup>
BEDROOM	13m <sup>2</sup>
LIVING & DINING	12m <sup>2</sup>
KITCHEN	7m <sup>2</sup>
CORRIDOR	8m <sup>2</sup>

# 1 BEDROOM Type 08

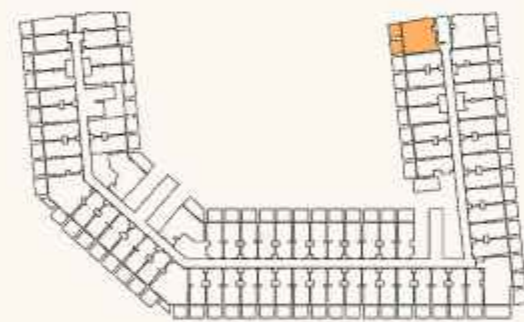
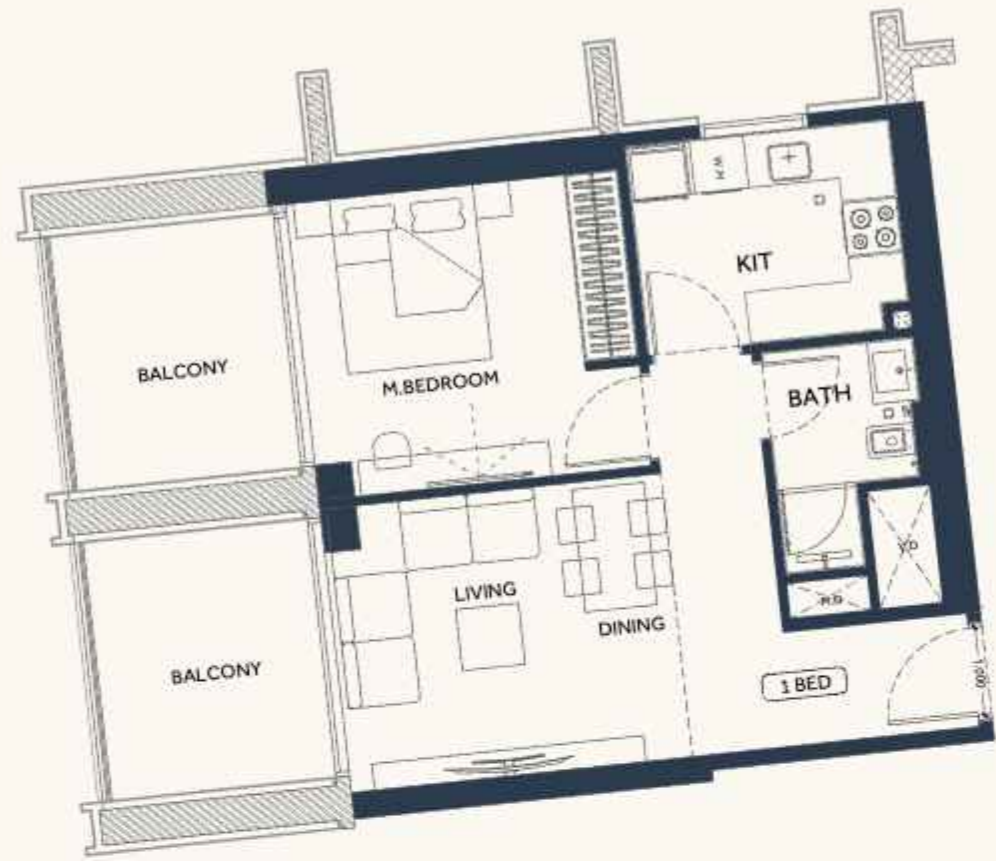
AREA	SQ.M	SQ.FT
SUITE AREA	48.13 m <sup>2</sup>	518.06 ft <sup>2</sup>
BALCONY AREA	17.40 m <sup>2</sup>	187.29 ft <sup>2</sup>
TOTAL UNIT AREA	65.53 m <sup>2</sup>	705.35 ft <sup>2</sup>

### FLAT DESIGN COMPONENTS

BATH	4m <sup>2</sup>
BEDROOM	13m <sup>2</sup>
LIVING & DINING	12m <sup>2</sup>
KITCHEN	7m <sup>2</sup>
CORRIDOR	8m <sup>2</sup>

Disclaimer: 1. All room dimensions are measured to structural elements and exclude wall finishes and construction tolerances. 2. All dimensions have been provided by our structural architect. 3. All materials, dimensions and drawings are approximate. Information is subject to change without notice. 4. Actual suite area may vary from the stated area. Drawings not to scale. The Developer reserves the right to make revisions. 5. Calculation of suite area is measured as the area bounded by the centre line of demising or partition walls separating one unit from another unit, the exterior face of all exterior walls, and the exterior face of the corridor wall enclosing the adjoining unit. 6. Calculation of balcony area is measured as the area bounded by the centre line of demising or partition walls separating one unit from another unit, the exterior face of the enclosing guard and the exterior face of the adjoining balcony. 7. The units are measured at typical floor in the building. Balcony area may vary in size depending on the floor level. 8. For each unit type, unit sizes and details might be slightly different. Please refer to the sales and purchase agreement for the actual size of each specific unit.

إشعار: 1. جميع أبعاد الغرف هي مقاسة إلى العناصر الهيكلية وتتجاهل طلاء الجدران والبناء. 2. جميع الأبعاد قد تم توفيرها من قبل المهندس المعماري الهيكلي. 3. جميع المواد والأبعاد والرسومات هي تقريبية. المعلومات هي عرضة للتغيير دون إشعار مسبق. 4. المساحة الفعلية للغرفة قد تختلف عن المساحة المذكورة. الرسومات ليست بالقياس. 5. حساب مساحة الغرفة هو المقاس إلى الخط المركزي للجدران الفاصلة بين الوحدات، الوجه الخارجي لجميع الجدران الخارجية، والوجه الخارجي للجدران المحيطة بالوحدات المجاورة. 6. حساب مساحة الشرفة هو المقاس إلى الخط المركزي للجدران الفاصلة بين الوحدات، الوجه الخارجي للجدران المحيطة بالشرفة، والوجه الخارجي للشرفة المجاورة. 7. الوحدات هي مقاسة على الطابق النموذجي في المبنى. مساحة الشرفة قد تختلف في الحجم اعتماداً على مستوى الطابق. 8. لكل نوع وحدة، قد تختلف الأحجام والتفاصيل قليلاً. يرجى الرجوع إلى اتفاقية البيع والشراء للحصول على الحجم الفعلي لكل وحدة محددة.



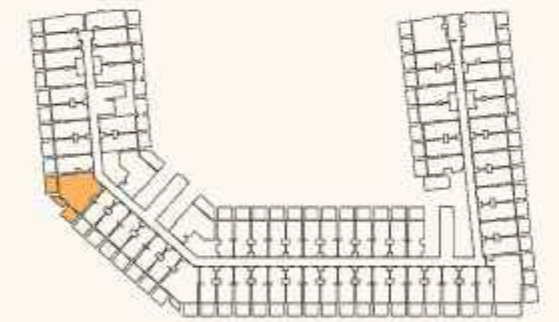
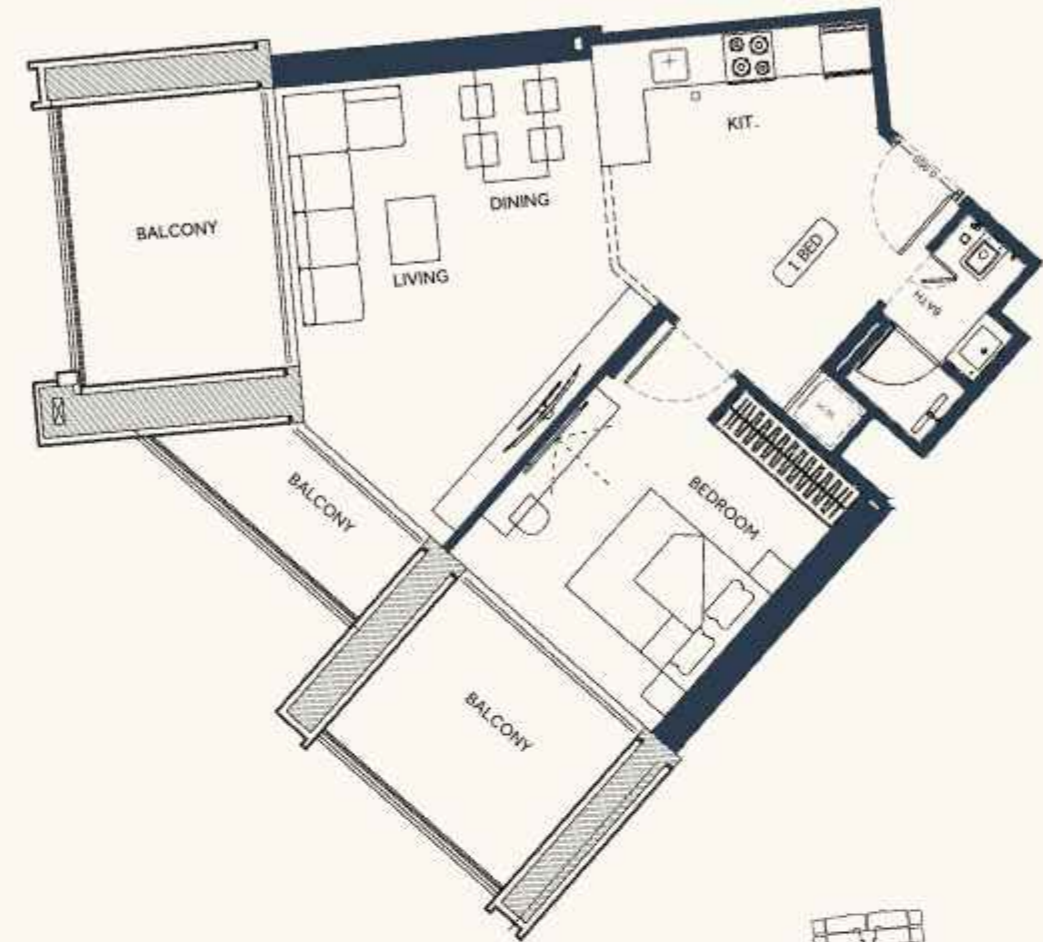
# 1 BEDROOM Type 09

AREA	SQ.M	SQ.FT
SUITE AREA	48.77 m <sup>2</sup>	524.95 ft <sup>2</sup>
BALCONY AREA	17.40 m <sup>2</sup>	187.29 ft <sup>2</sup>
TOTAL UNIT AREA	66.17 m <sup>2</sup>	712.24 ft <sup>2</sup>

### FLAT DESIGN COMPONENTS

BATH	4m <sup>2</sup>
BEDROOM	12m <sup>2</sup>
LIVING & DINING	12m <sup>2</sup>
KITCHEN	7 m <sup>2</sup>
CORRIDOR	8m <sup>2</sup>

Disclaimer: 1. All room dimensions are measured to structural elements and exclude wall finishes and construction tolerances. 2. All dimensions have been provided by our structural architect. 3. All materials, dimensions and drawings are approximate. Information is subject to change without notice. 4. Actual suite area may vary from the stated area. Drawings not to scale. The Developer reserves the right to make revisions. 5. Calculation of suite area is measured as the area bounded by the centre line of demising or partition walls separating one unit from another unit, the exterior face of all exterior walls, and the exterior face of the corridor wall enclosing the adjoining unit. 6. Calculation of balcony area is measured as the area bounded by the centre line of demising or partition walls separating one unit from another unit, the exterior face of the enclosing guard and the exterior face of the adjoining balcony. 7. The units are measured at typical floor in the building. Balcony area may vary in size depending on the floor level. 8. For each unit type, unit sizes and details might be slightly different. Please refer to the sales and purchase agreement for the actual size of each specific unit.



# 1 BEDROOM Type 10

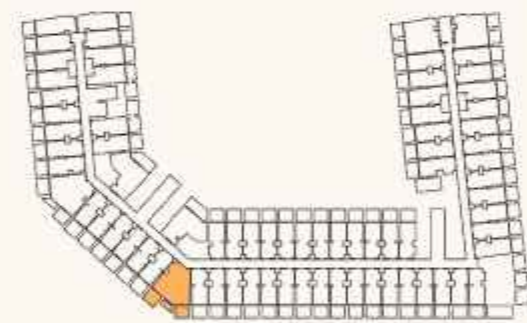
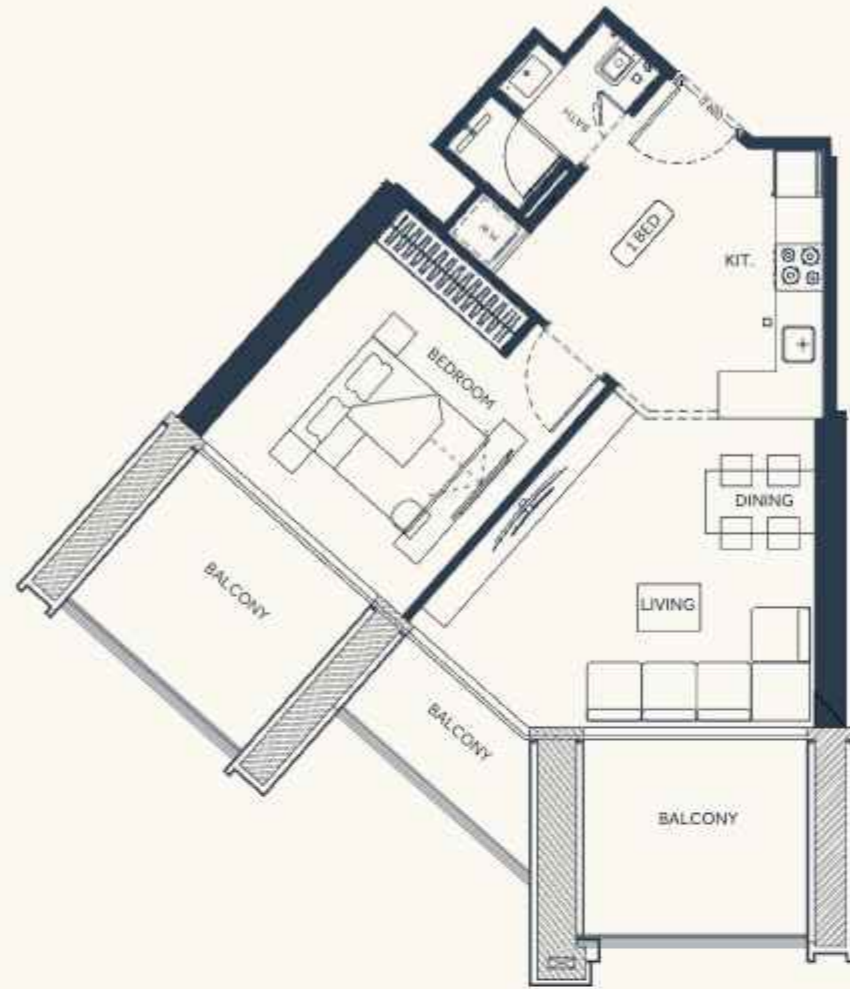
AREA	SQ. M	SQ. FT
SUITE AREA	55.24 m <sup>2</sup>	594.59 ft <sup>2</sup>
BALCONY AREA	24.21 m <sup>2</sup>	260.59 ft <sup>2</sup>
TOTAL UNIT AREA	79.45 m <sup>2</sup>	855.19 ft <sup>2</sup>

### FLAT DESIGN COMPONENTS

BATH	3 m <sup>2</sup>
BEDROOM	13 m <sup>2</sup>
LIVING & DINING	19 m <sup>2</sup>
KITCHEN	8 m <sup>2</sup>
CORRIDOR	6 m <sup>2</sup>
LAUNDRY	1 m <sup>2</sup>

Disclaimer: 1. All room dimensions are measured to structural elements and exclude wall finishes and construction tolerances. 2. All dimensions have been provided by our structural architect. 3. All materials, dimensions and drawings are approximate. Information is subject to change without notice. 4. Actual suite area may vary from the stated area. Drawings not to scale. The Developer reserves the right to make revisions. 5. Calculation of suite area is measured as the area bounded by the centre line of demising or partition walls separating one unit from another unit, the exterior face of all exterior walls, and the exterior face of the corridor wall enclosing the adjoining unit. 6. Calculation of balcony area is measured as the area bounded by the centre line of demising or partition walls separating one unit from another unit, the exterior face of the enclosing guard and the exterior face of the adjoining balcony. 7. The units are measured at typical floor in the building. Balcony area may vary in size depending on the floor level. 8. For each unit type, unit sizes and details might be slightly different. Please refer to the sales and purchase agreement for the actual size of each specific unit.





# 1 BEDROOM Type 11

AREA	SQ.M	SQ.FT
SUITE AREA	51.23 m <sup>2</sup>	551.43 ft <sup>2</sup>
BALCONY AREA	22.41 m <sup>2</sup>	241.21 ft <sup>2</sup>
TOTAL UNIT AREA	73.64 m <sup>2</sup>	792.65 ft <sup>2</sup>

## FLAT DESIGN COMPONENTS

BATH	3 m <sup>2</sup>
BEDROOM	14 m <sup>2</sup>
LIVING & DINING	17 m <sup>2</sup>
KITCHEN	8 m <sup>2</sup>
CORRIDOR	5 m <sup>2</sup>
LAUNDRY	1 m <sup>2</sup>



## A LEGACY OF ARCHITECTURAL ARTISTRY

In the heart of Dubai's vibrant real estate landscape, Binghatti stands as a testament to architectural ingenuity and unwavering commitment to excellence. As a distinguished Emirati property brand, Binghatti has carved a niche for itself by creating iconic landmarks that redefine the skyline. The brand's diverse portfolio caters to a wide spectrum of discerning clientele, offering projects that range from accessible elegance to ultra-high-end luxury. Binghatti's signature design DNA, meticulously woven into each development, sets it apart on the global stage. With over 60 projects valued at more than AED 40 billion, Binghatti is a leading privately held developer in the UAE. The company's impressive track record, including the successful delivery of 25,000 units prior to 2024, underscores its dedication to crafting exceptional living spaces. Through groundbreaking collaborations with prestigious luxury brands such as BUGATTI, Mercedes-Benz, and Jacob & Co., Binghatti continues to push boundaries and set new benchmarks in the world of branded real estate.





SCAN TO  
VISIT THE WEBSITE