

A stack of three books is shown against a light beige background. The books have rounded corners and a cover featuring a desert landscape with sand dunes under a warm, golden light. The title 'ONE BEVERLY' is printed in white, serif, all-caps font across the middle of the books. At the bottom of the stack, the author's name 'A R J A N' is printed in white, spaced-out, all-caps font.

ONE BEVERLY

A R J A N

INFLUENCED BY THE ESSENCE OF ART DECO

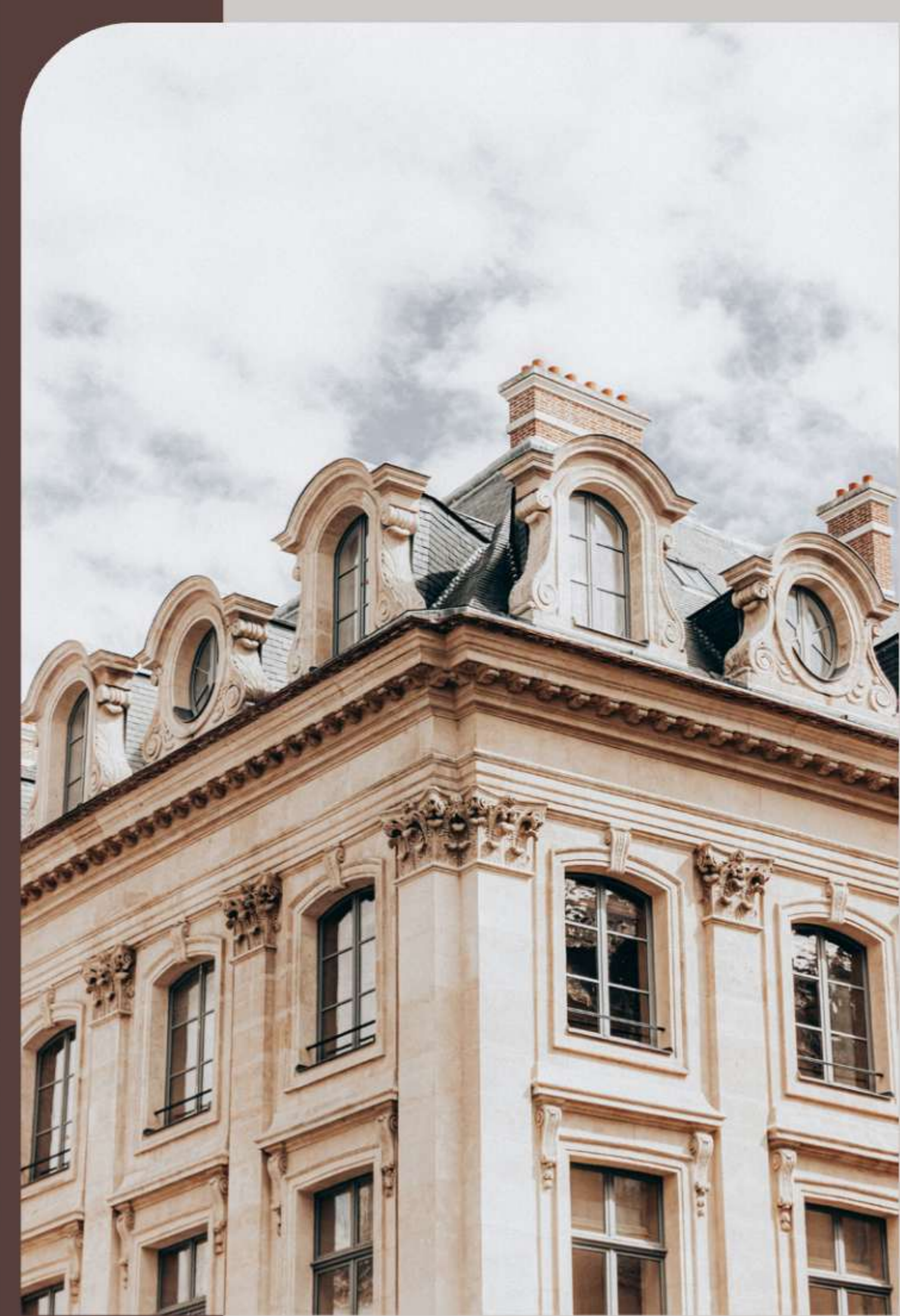
DON'T JUST SETTLE.
SETTLE FOR THE EXCEPTIONAL.



ADORNING ELEGANCE

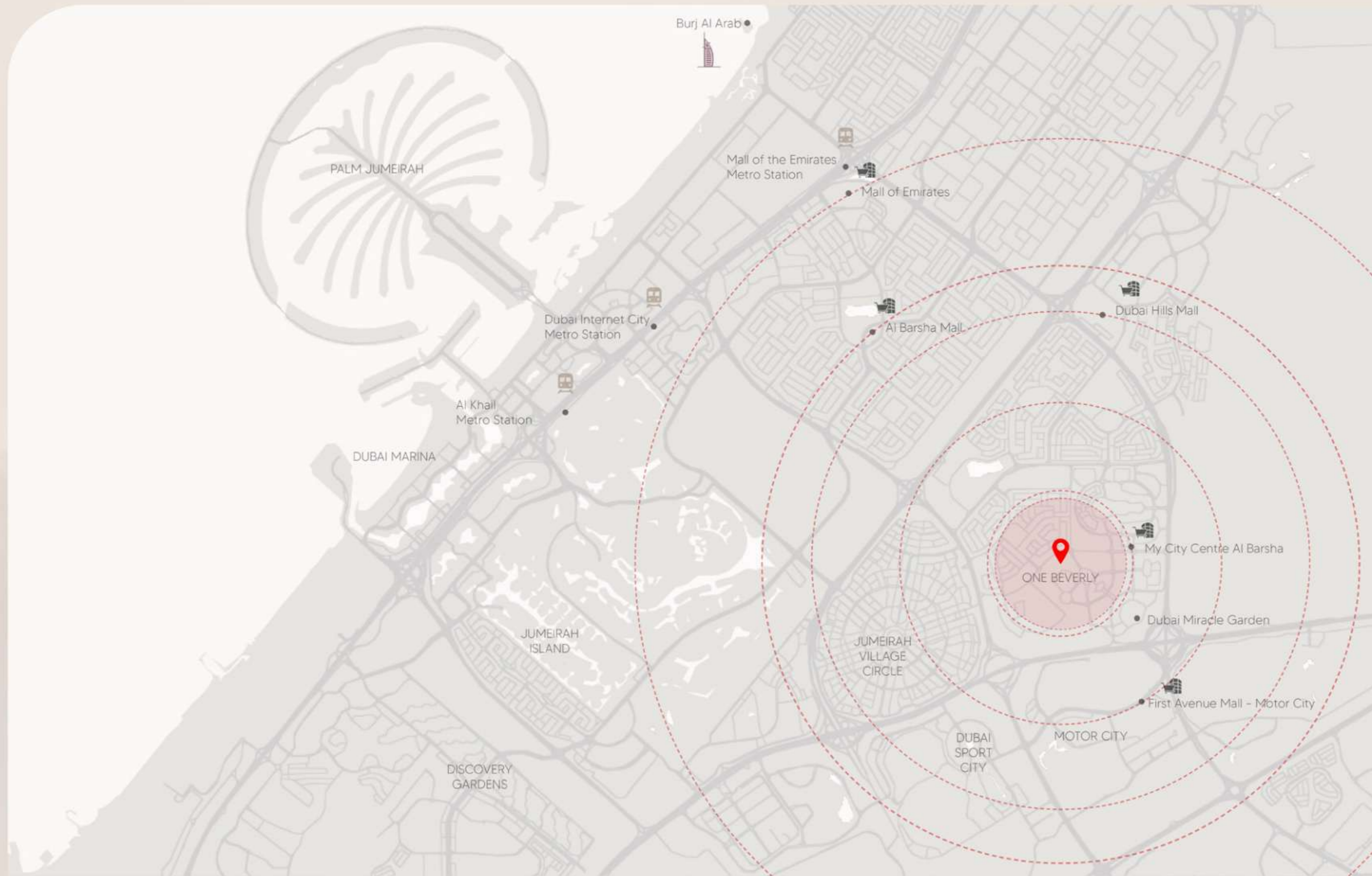
WHAT SUPERIOR METHOD EXISTS TO EMBRACE BOTH ITS POSSESSIONS AND SIGNIFICANCE THAN TO DISCOVER A STRUCTURE THAT EMBODIES THAT IDENTICAL MEANING.

A STRUCTURE THAT EMANATES BOTH CONTENTMENT AND ASPIRATION.



ARJAN

Arjan stands as an esteemed residential community in Dubai, seamlessly integrating modern conveniences with a tight-knit neighborhood ambiance. Its inviting atmosphere and plethora of upscale residential offerings draw individuals seeking a refined yet dynamic lifestyle. Effortlessly blending contemporary luxuries such as high-end residences and amenities with a vibrant community ethos, Arjan epitomizes the ideal balance of sophistication, connectivity, and boundless opportunities for its residents.



GRAND PANORAMA

BRINGING ABSOLUTE SOPHISTICATION TO LIFE REQUIRES A VISIONARY BOLDNESS.

ONE BEVERLY epitomizes peerless craftsmanship, blending glass-reinforced concrete facades with sleek frames and soft lighting. Each floor boasts curved designs, showcasing panoramic views. Residences offer seamless integration with outdoor terraces. It stands as the pinnacle of sophistication and luxury.



— • —
EMBRACING THE
TRIFECTA OF
LUXURY, OPULENCE,
AND GLAMOUR
— • —



— • —
FLOURISH AMIDST
THE CITY, UNWIND
IN TRANQUILITY.
— • —





MASTERING
UNMATCHED
SOPHISTICATION





MORE THAN A
MERE SPACE,
IT STANDS AS
A CAPTIVATING
SYMBOL OF
RESIDENCE,
ENTICING IN ITS
ALLURE.

EXCEPTIONAL AT
EVERY GLANCE



AN ULTIMATE
LIFESTYLE
DESTINATION
CRAFTED FOR
THE DISCERNING
INDIVIDUAL



AMENITIES

- Multipurpose Area
- Prayer room
- Water Fountain
- Outdoor Basket ball court
- Open Cinema
- Shallow pool
- Kids pool
- Beach pool
- Rain Shower
- Splash Pad
- Aqua Kids play area
- Pool side Cabana
- Landscape Area
- Zen garden
- Zen yoga
- Male Sauna
- Male Jacuzzi
- Female Sauna
- Female Jacuzzi
- Sunken sitting with fire pit
- Indoor Gym
- Aqua Gym
- Outdoor Golf
- Outdoor Family Lounge
- Open Air gym
- Outdoor kids play area
- Jogging Track
- Indoor kids play area
- Kids Rope Climbing
- Water slide
- BBQ Area
- Trampoline
- Outdoor Kids boxing area
- EV Charge station
- Home Automation





FACILITIES OR FEATURES

EXPERIENCE THE LUXURY OF DISTINCTION—AN UNRIVALED SKYLINE SILHOUETTE UNLIKE ANY OTHER.



Nestled within the vicinity of ONE BEVERLY, your home serves as a tranquil oasis, embracing you with serene tranquility as you return from a demanding day's work. It becomes more than just a residence; it becomes a sanctuary that enriches your mental and spiritual well-being, nurturing a sense of peace and positivity in your everyday life.

— • —
FACILITIES THAT
SUPPORT A
LIFESTYLE
THAT IS LIVED TO
THE FULLEST
— • —



RECHARGE

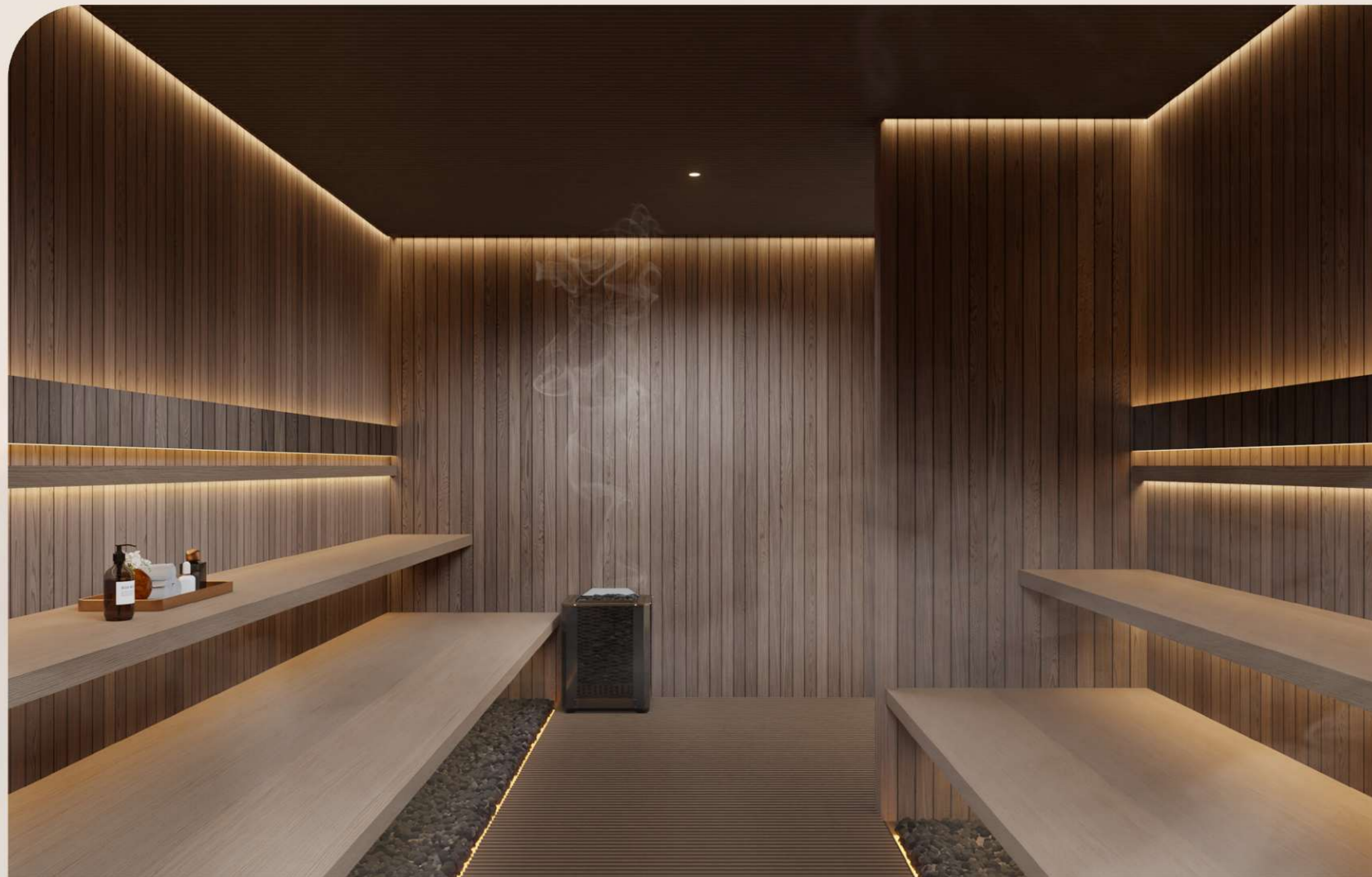
REVITALIZE YOUR ENERGY AT OUR STATE-OF-THE-ART FITNESS CLUB WHILE INDULGING IN THE MESMERIZING VISTA THAT SURROUNDS YOU.



Embark on a journey of fitness and fun in our cutting-edge courtyard, featuring both indoor and outdoor amenities that empower you to reach your full potential.



SPA & SAUNA





JACUZZI





LIVING AREA





KITCHEN





SANITARY
FACILITIES





HMB HOMES

REAL ESTATE DEVELOPMENT