



BAYGROVE  
RESIDENCES

DUBAI ISLANDS

F L O O R P L A N S

**NAKHEEL**

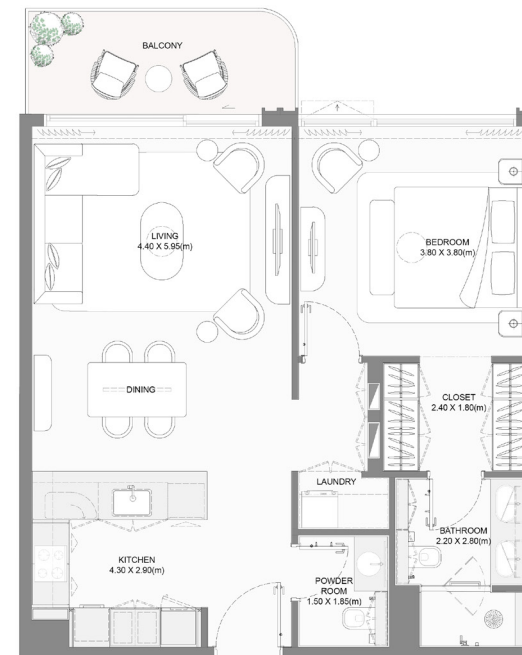
A background image of a sunset over a body of water. The sun is low on the horizon, creating a bright orange and yellow glow that reflects on the water's surface. The water has gentle ripples, and the overall scene is peaceful and serene.

1 BEDROOM

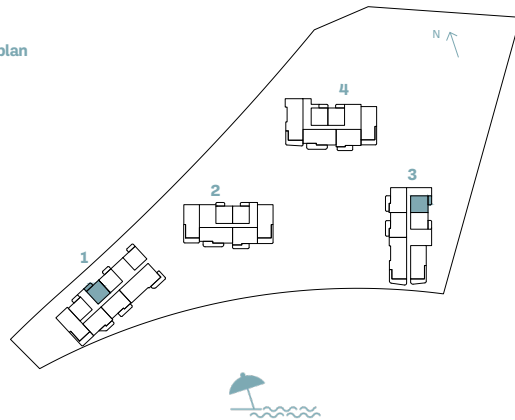
# 1-BEDROOM

## TYPE A

BUILDING	UNIT NUMBER	Suite Area NIA		Balcony Area		Total Area NSA	
		SQM	SQFT	SQM	SQFT	SQM	SQFT
1	107	73.34	789.43	8.18	88.05	81.52	877.47
1	207   307   407   505   605   704   803	73.34	789.43	8.19	88.16	81.53	877.58
3	205   305   405   505   605   703	73.33	789.32	8.20	88.26	81.53	877.58



Key plan

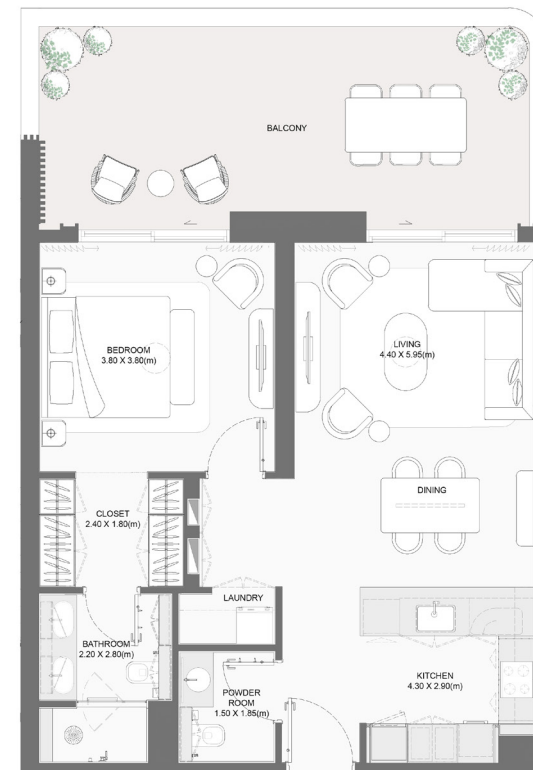


Disclaimer: All measurements, dimensions, coordinates, and drawings provided as the Floor Plans in the literature are approximate and provided only for the purpose of marketing, illustration, information, and general guidance, as these drawings are not to scale. All the rooms, sizes, locations, orientations, dimensions, fixtures, fittings, finishes, and specifications (including materials, placement, size of rooms, windows, doors, balconies, and built-in wardrobes) provided in the floor plans may vary as the same have been taken from concept designs prior the actual development/construction. Therefore, their accuracy in relation to the completed construction cannot be confirmed. We make no guarantee, warranty, or representation regarding the accuracy and completeness of the floor plan information, as changes may occur during the development process without notice. Always refer to the latest IFC design available in the sales office for the most accurate representation of all construction details.

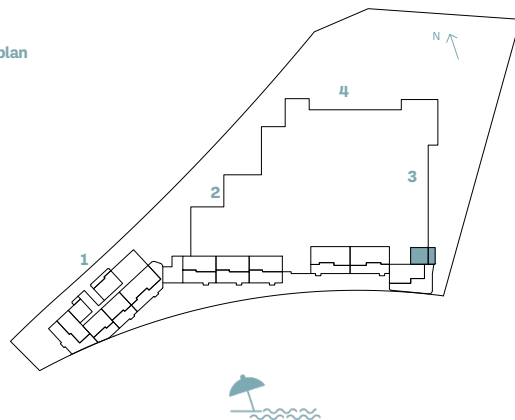
# 1-BEDROOM

## TYPE B

BUILDING	UNIT NUMBER	Suite Area NIA		Balcony Area		Total Area NSA	
		SQM	SQFT	SQM	SQFT	SQM	SQFT
3	G01	73.56	791.79	29.60	318.61	103.16	1110.40



Key plan



Disclaimer: All measurements, dimensions, coordinates, and drawings provided as the Floor Plans in the literature are approximate and provided only for the purpose of marketing, illustration, information, and general guidance, as these drawings are not to scale. All the rooms, sizes, locations, orientations, dimensions, fixtures, fittings, finishes, and specifications (including materials, placement, size of rooms, windows, doors, balconies, and built-in wardrobes) provided in the floor plans may vary as the same have been taken from concept designs prior to the actual development/construction. Therefore, their accuracy in relation to the completed construction cannot be confirmed. We make no guarantee, warranty, or representation regarding the accuracy and completeness of the floor plan information, as changes may occur during the development process without notice. Always refer to the latest IFC design available in the sales office for the most accurate representation of all construction details.

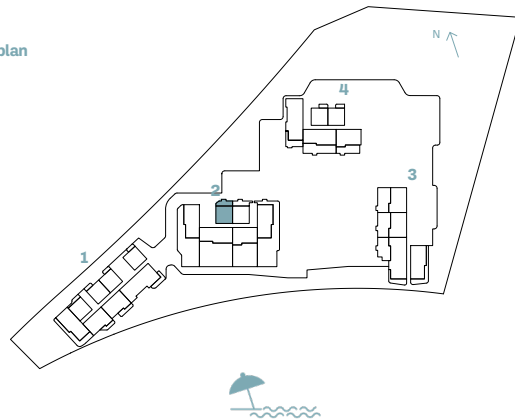
# 1-BEDROOM

## TYPE C

BUILDING	UNIT NUMBER	Suite Area NIA		Balcony Area		Total Area NSA	
		SQM	SQFT	SQM	SQFT	SQM	SQFT
2	101	73.57	791.90	21.47	231.10	95.04	1023.00



Key plan



Disclaimer: All measurements, dimensions, coordinates, and drawings provided as the Floor Plans in the literature are approximate and provided only for the purpose of marketing, illustration, information, and general guidance, as these drawings are not to scale. All the rooms, sizes, locations, orientations, dimensions, fixtures, fittings, finishes, and specifications (including materials, placement, size of rooms, windows, doors, balconies, and built-in wardrobes) provided in the floor plans may vary as the same have been taken from concept designs prior to the actual development/construction. Therefore, their accuracy in relation to the completed construction cannot be confirmed. We make no guarantee, warranty, or representation regarding the accuracy and completeness of the floor plan information, as changes may occur during the development process without notice. Always refer to the latest IFC design available in the sales office for the most accurate representation of all construction details.

# 1-BEDROOM

## TYPE D

BUILDING	UNIT NUMBER	Suite Area NIA		Balcony Area		Total Area NSA	
		SQM	SQFT	SQM	SQFT	SQM	SQFT
2	102	73.58	792.01	23.92	257.47	97.50	1049.48



Key plan



Disclaimer: All measurements, dimensions, coordinates, and drawings provided as the Floor Plans in the literature are approximate and provided only for the purpose of marketing, illustration, information, and general guidance, as these drawings are not to scale. All the rooms, sizes, locations, orientations, dimensions, fixtures, fittings, finishes, and specifications (including materials, placement, size of rooms, windows, doors, balconies, and built-in wardrobes) provided in the floor plans may vary as the same have been taken from concept designs prior to the actual development/construction. Therefore, their accuracy in relation to the completed construction cannot be confirmed. We make no guarantee, warranty, or representation regarding the accuracy and completeness of the floor plan information, as changes may occur during the development process without notice. Always refer to the latest IFC design available in the sales office for the most accurate representation of all construction details.

# 1-BEDROOM

## TYPE E

BUILDING	UNIT NUMBER	Suite Area NIA		Balcony Area		Total Area NSA	
		SQM	SQFT	SQM	SQFT	SQM	SQFT
1	106	73.38	789.86	11.11	119.59	84.49	909.44

Key plan

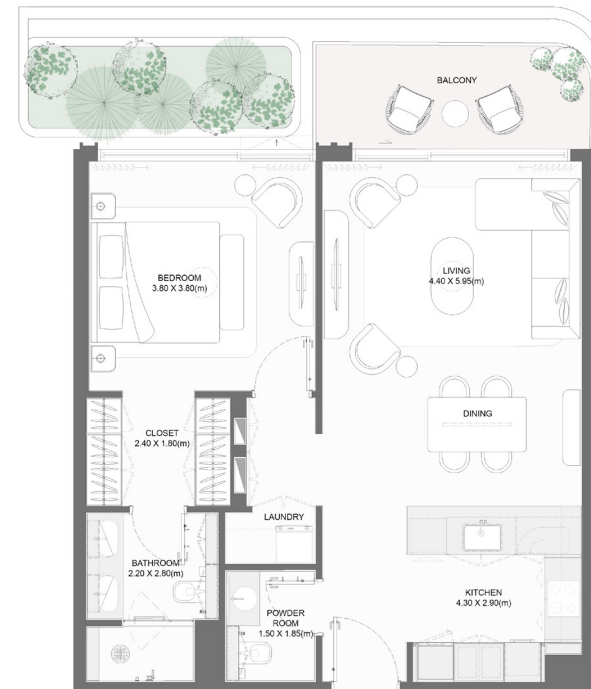


Disclaimer: All measurements, dimensions, coordinates, and drawings provided as the Floor Plans in the literature are approximate and provided only for the purpose of marketing, illustration, information, and general guidance, as these drawings are not to scale. All the rooms, sizes, locations, orientations, dimensions, fixtures, fittings, finishes, and specifications (including materials, placement, size of rooms, windows, doors, balconies, and built-in wardrobes) provided in the floor plans may vary as the same have been taken from concept designs prior to the actual development/construction. Therefore, their accuracy in relation to the completed construction cannot be confirmed. We make no guarantee, warranty, or representation regarding the accuracy and completeness of the floor plan information, as changes may occur during the development process without notice. Always refer to the latest IFC design available in the sales office for the most accurate representation of all construction details.

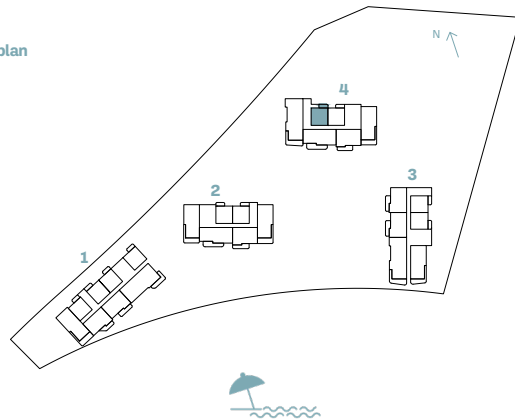
# 1-BEDROOM

## TYPE F

BUILDING	UNIT NUMBER	Suite Area NIA		Balcony Area		Total Area NSA	
		SQM	SQFT	SQM	SQFT	SQM	SQFT
4	205   305   405   505   605   705 805   905   1005   1105   1205 1305   1405   1505   1605   1705 1805   1904   2002	73.38	789.86	8.36	89.99	81.74	879.84
4	104	73.38	789.86	8.60	92.57	81.98	882.43



Key plan



Disclaimer: All measurements, dimensions, coordinates, and drawings provided as the Floor Plans in the literature are approximate and provided only for the purpose of marketing, illustration, information, and general guidance, as these drawings are not to scale. All the rooms, sizes, locations, orientations, dimensions, fixtures, fittings, finishes, and specifications (including materials, placement, size of rooms, windows, doors, balconies, and built-in wardrobes) provided in the floor plans may vary as the same have been taken from concept designs prior to the actual development/construction. Therefore, their accuracy in relation to the completed construction cannot be confirmed. We make no guarantee, warranty, or representation regarding the accuracy and completeness of the floor plan information, as changes may occur during the development process without notice. Always refer to the latest IFC design available in the sales office for the most accurate representation of all construction details.

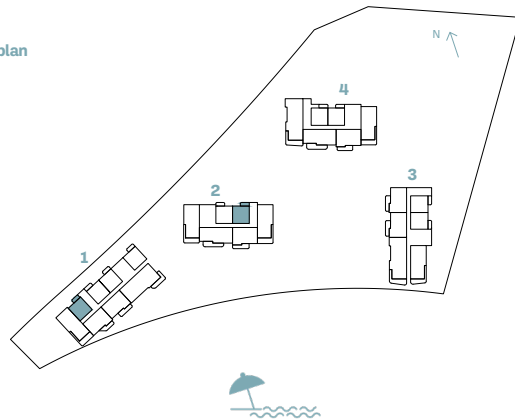


# 1-BEDROOM

## TYPE G

BUILDING	UNIT NUMBER	Suite Area NIA		Balcony Area		Total Area NSA	
		SQM	SQFT	SQM	SQFT	SQM	SQFT
1	G05	73.34	789.43	7.54	81.16	80.88	870.59
2	202   302   402   502   602   702 802   902   1002   1102   1202   1302	73.34	789.43	8.19	88.16	81.53	877.58
1	206   306   406	73.38	789.86	7.54	81.16	80.92	871.02

Key plan



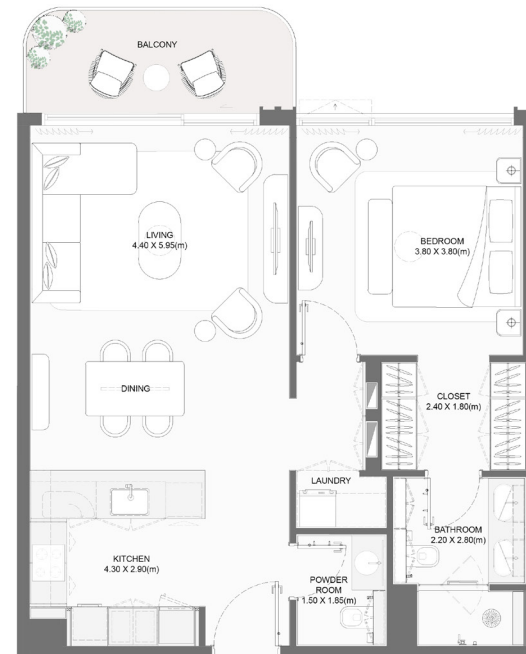
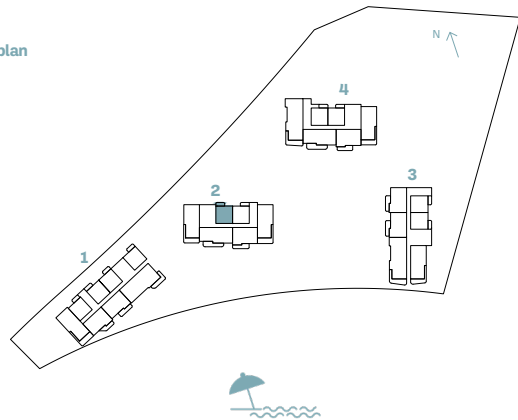
Disclaimer: All measurements, dimensions, coordinates, and drawings provided as the Floor Plans in the literature are approximate and provided only for the purpose of marketing, illustration, information, and general guidance, as these drawings are not to scale. All the rooms, sizes, locations, orientations, dimensions, fixtures, fittings, finishes, and specifications (including materials, placement, size of rooms, windows, doors, balconies, and built-in wardrobes) provided in the floor plans may vary as the same have been taken from concept designs prior the actual development/construction. Therefore, their accuracy in relation to the completed construction cannot be confirmed. We make no guarantee, warranty, or representation regarding the accuracy and completeness of the floor plan information, as changes may occur during the development process without notice. Always refer to the latest IFC design available in the sales office for the most accurate representation of all construction details.

# 1-BEDROOM

## TYPE H

BUILDING	UNIT NUMBER	Suite Area NIA		Balcony Area		Total Area NSA	
		SQM	SQFT	SQM	SQFT	SQM	SQFT
2	201   301   401   501   601   701 801   901   1001   1101   1201   1301	73.34	789.43	7.97	85.79	81.31	875.21

Key plan



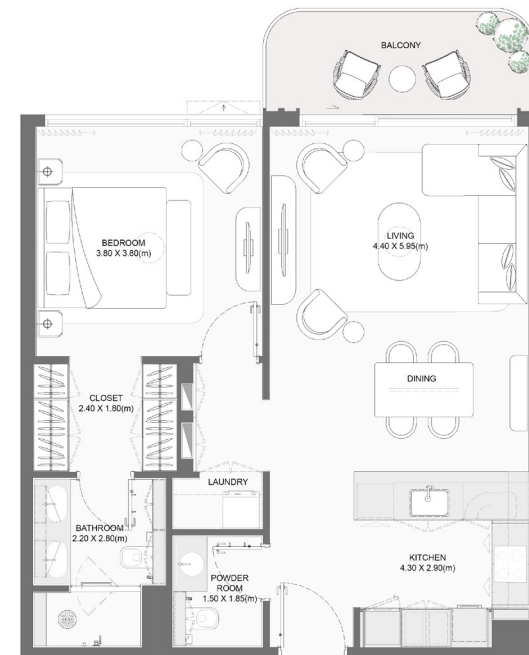
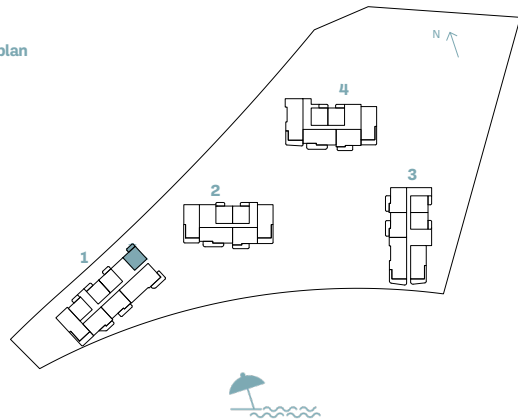
Disclaimer: All measurements, dimensions, coordinates, and drawings provided as the Floor Plans in the literature are approximate and provided only for the purpose of marketing, illustration, information, and general guidance, as these drawings are not to scale. All the rooms, sizes, locations, orientations, dimensions, fixtures, fittings, finishes, and specifications (including materials, placement, size of rooms, windows, doors, balconies, and built-in wardrobes) provided in the floor plans may vary as the same have been taken from concept designs prior the actual development/construction. Therefore, their accuracy in relation to the completed construction cannot be confirmed. We make no guarantee, warranty, or representation regarding the accuracy and completeness of the floor plan information, as changes may occur during the development process without notice. Always refer to the latest IFC design available in the sales office for the most accurate representation of all construction details.

# 1-BEDROOM

## TYPE I

BUILDING	UNIT NUMBER	Suite Area NIA		Balcony Area		Total Area NSA	
		SQM	SQFT	SQM	SQFT	SQM	SQFT
1	201   301   401   501   601   701   801	73.31	789.10	7.98	85.90	81.29	875.00
1	101	73.31	789.10	8.05	86.65	81.36	875.75

Key plan



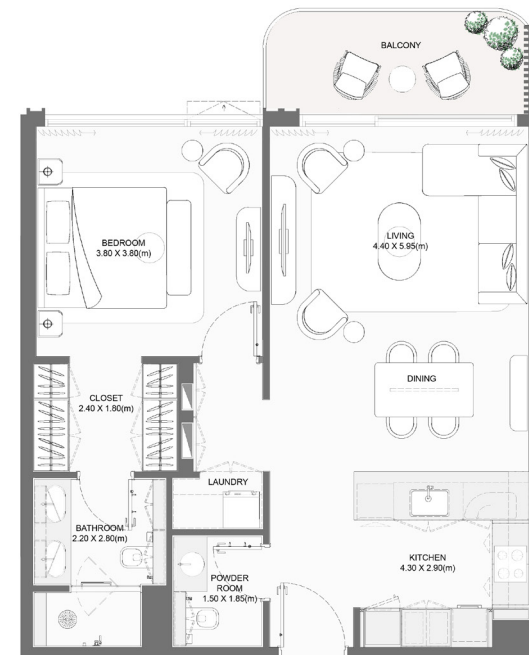
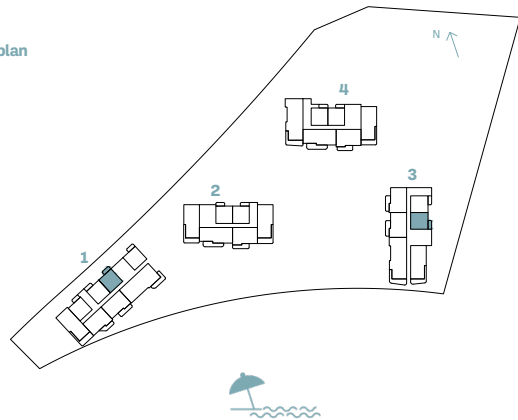
Disclaimer: All measurements, dimensions, coordinates, and drawings provided as the Floor Plans in the literature are approximate and provided only for the purpose of marketing, illustration, information, and general guidance, as these drawings are not to scale. All the rooms, sizes, locations, orientations, dimensions, fixtures, fittings, finishes, and specifications (including materials, placement, size of rooms, windows, doors, balconies, and built-in wardrobes) provided in the floor plans may vary as the same have been taken from concept designs prior the actual development/construction. Therefore, their accuracy in relation to the completed construction cannot be confirmed. We make no guarantee, warranty, or representation regarding the accuracy and completeness of the floor plan information, as changes may occur during the development process without notice. Always refer to the latest IFC design available in the sales office for the most accurate representation of all construction details.

# 1-BEDROOM

## TYPE J

BUILDING	UNIT NUMBER	Suite Area NIA		Balcony Area		Total Area NSA	
		SQM	SQFT	SQM	SQFT	SQM	SQFT
1	108	73.34	789.43	7.78	83.74	81.12	873.17
3	206   306   406   506   606   704	73.34	789.43	7.96	85.68	81.30	875.11
1	208   308   408   506   606   705   804	73.34	789.43	7.98	85.90	81.32	875.32

Key plan



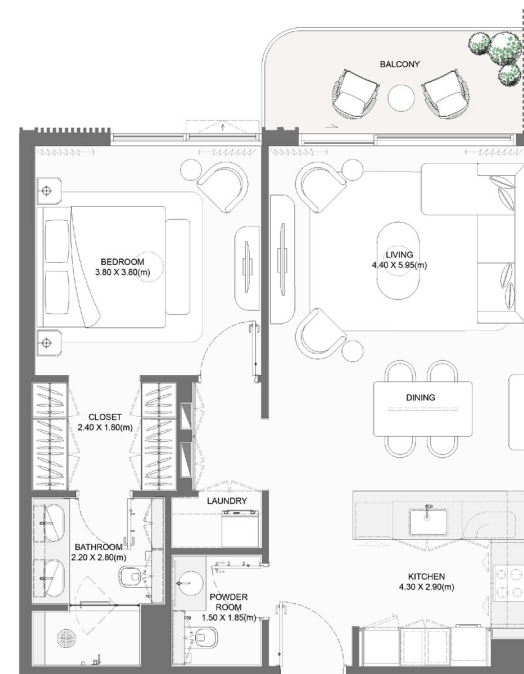
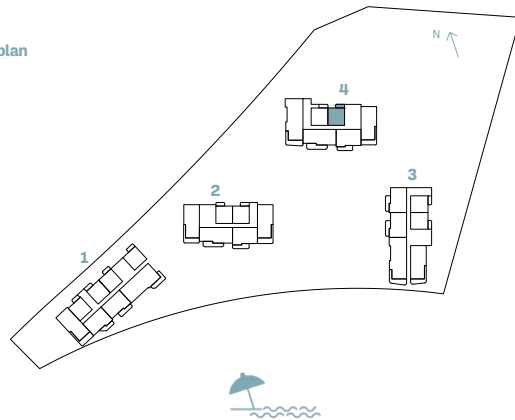
Disclaimer: All measurements, dimensions, coordinates, and drawings provided as the Floor Plans in the literature are approximate and provided only for the purpose of marketing, illustration, information, and general guidance, as these drawings are not to scale. All the rooms, sizes, locations, orientations, dimensions, fixtures, fittings, finishes, and specifications (including materials, placement, size of rooms, windows, doors, balconies, and built-in wardrobes) provided in the floor plans may vary as the same have been taken from concept designs prior to the actual development/construction. Therefore, their accuracy in relation to the completed construction cannot be confirmed. We make no guarantee, warranty, or representation regarding the accuracy and completeness of the floor plan information, as changes may occur during the development process without notice. Always refer to the latest IFC design available in the sales office for the most accurate representation of all construction details.

# 1-BEDROOM

## TYPE K

BUILDING	UNIT NUMBER	Suite Area NIA		Balcony Area		Total Area NSA	
		SQM	SQFT	SQM	SQFT	SQM	SQFT
4	206   306   406   506   606   706 806   906   1006   1106   1206 1306   1406   1506   1606   1706 1806   1905   2003	73.72	793.52	8.16	87.83	81.88	881.35
4	105	73.72	793.52	8.62	92.78	82.34	886.30

Key plan



Disclaimer: All measurements, dimensions, coordinates, and drawings provided as the Floor Plans in the literature are approximate and provided only for the purpose of marketing, illustration, information, and general guidance, as these drawings are not to scale. All the rooms, sizes, locations, orientations, dimensions, fixtures, fittings, finishes, and specifications (including materials, placement, size of rooms, windows, doors, balconies, and built-in wardrobes) provided in the floor plans may vary as the same have been taken from concept designs prior to the actual development/construction. Therefore, their accuracy in relation to the completed construction cannot be confirmed. We make no guarantee, warranty, or representation regarding the accuracy and completeness of the floor plan information, as changes may occur during the development process without notice. Always refer to the latest IFC design available in the sales office for the most accurate representation of all construction details.

The background features a sunset scene with a bright orange and yellow sky at the top, transitioning into a darker, blueish-grey sky. Below the sky, there are long, horizontal, wavy light trails in shades of yellow and orange, suggesting a long-exposure photograph of a sunset over water or a similar reflective surface. The overall mood is serene and atmospheric.

2 BEDROOM

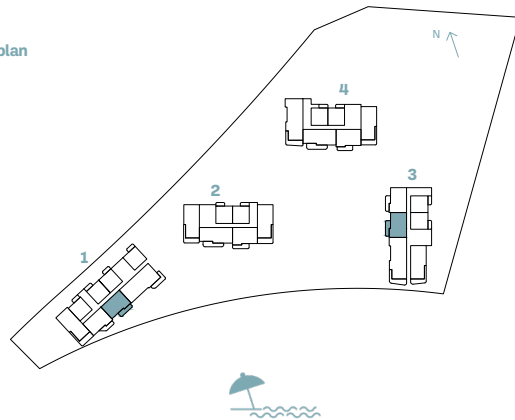
# 2-BEDROOM

## TYPE A

BUILDING	UNIT NUMBER	Suite Area NIA		Balcony Area		Total Area NSA	
		SQM	SQFT	SQM	SQFT	SQM	SQFT
3	203   303   403   503   603   701	103.82	1117.51	17.45	187.83	121.27	1305.34
1	103   203   303   403   503 603   703	103.82	1117.51	17.66	190.09	121.48	1307.60



Key plan



Disclaimer: All measurements, dimensions, coordinates, and drawings provided as the Floor Plans in the literature are approximate and provided only for the purpose of marketing, illustration, information, and general guidance, as these drawings are not to scale. All the rooms, sizes, locations, orientations, dimensions, fixtures, fittings, finishes, and specifications (including materials, placement, size of rooms, windows, doors, balconies, and built-in wardrobes) provided in the floor plans may vary as the same have been taken from concept designs prior to the actual development/construction. Therefore, their accuracy in relation to the completed construction cannot be confirmed. We make no guarantee, warranty, or representation regarding the accuracy and completeness of the floor plan information, as changes may occur during the development process without notice. Always refer to the latest IFC design available in the sales office for the most accurate representation of all construction details.

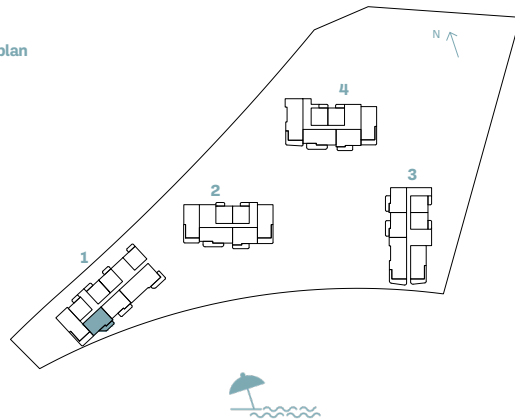
# 2-BEDROOM

## TYPE B

BUILDING	UNIT NUMBER	Suite Area NIA		Balcony Area		Total Area NSA	
		SQM	SQFT	SQM	SQFT	SQM	SQFT
1	104	103.76	1116.86	15.17	163.29	118.93	1280.15
1	204   304   404	103.76	1116.86	15.42	165.98	119.18	1282.84



Key plan



Disclaimer: All measurements, dimensions, coordinates, and drawings provided as the Floor Plans in the literature are approximate and provided only for the purpose of marketing, illustration, information, and general guidance, as these drawings are not to scale. All the rooms, sizes, locations, orientations, dimensions, fixtures, fittings, finishes, and specifications (including materials, placement, size of rooms, windows, doors, balconies, and built-in wardrobes) provided in the floor plans may vary as the same have been taken from concept designs prior to the actual development/construction. Therefore, their accuracy in relation to the completed construction cannot be confirmed. We make no guarantee, warranty, or representation regarding the accuracy and completeness of the floor plan information, as changes may occur during the development process without notice. Always refer to the latest IFC design available in the sales office for the most accurate representation of all construction details.



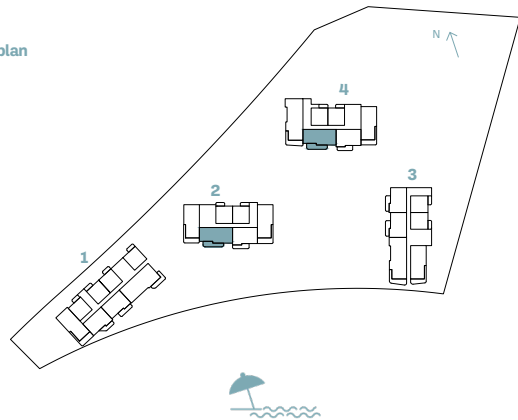
# 2-BEDROOM

## TYPE C

BUILDING	UNIT NUMBER	Suite Area NIA		Balcony Area		Total Area NSA	
		SQM	SQFT	SQM	SQFT	SQM	SQFT
2	205   305   405   505   605   705 805   905   1005   1105   1205   1304	124.95	1344.95	26.68	287.18	151.63	1632.13
4	403   503   603   703 803   903   1103   1203   1303 1403   1503   1603   1703 1803   1902	124.97	1345.17	26.68	287.18	151.65	1632.35
4	203   303   1003	124.89	1344.30	26.68	287.18	151.57	1631.49



Key plan



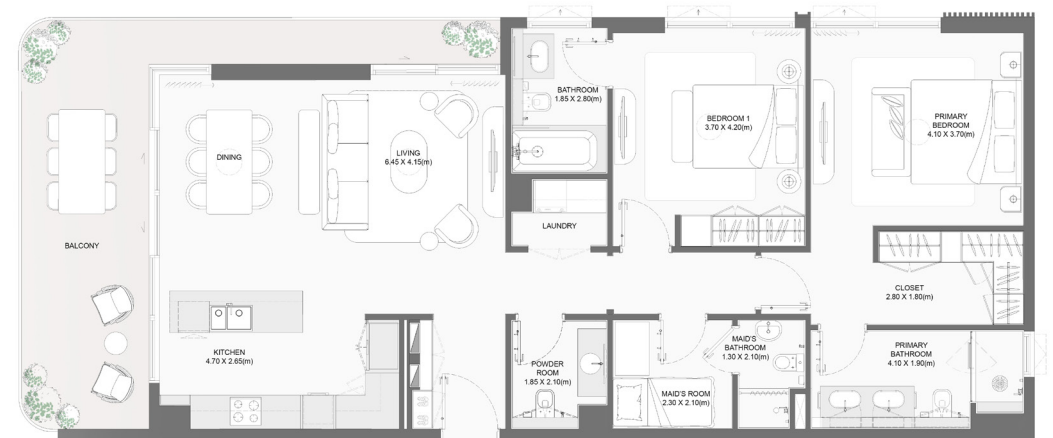
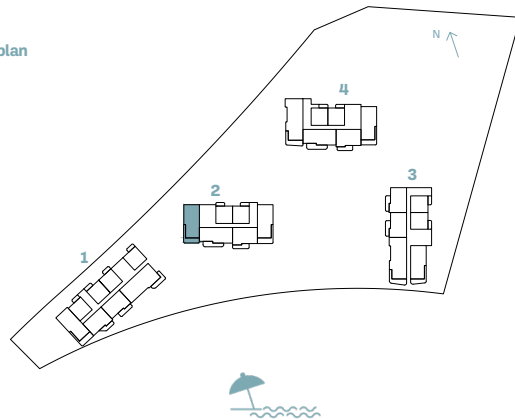
Disclaimer: All measurements, dimensions, coordinates, and drawings provided as the Floor Plans in the literature are approximate and provided only for the purpose of marketing, illustration, information, and general guidance, as these drawings are not to scale. All the rooms, sizes, locations, orientations, dimensions, fixtures, fittings, finishes, and specifications (including materials, placement, size of rooms, windows, doors, balconies, and built-in wardrobes) provided in the floor plans may vary as the same have been taken from concept designs prior to the actual development/construction. Therefore, their accuracy in relation to the completed construction cannot be confirmed. We make no guarantee, warranty, or representation regarding the accuracy and completeness of the floor plan information, as changes may occur during the development process without notice. Always refer to the latest IFC design available in the sales office for the most accurate representation of all construction details.

# 2-BEDROOM

## TYPE D

BUILDING	UNIT NUMBER	Suite Area NIA		Balcony Area		Total Area NSA	
		SQM	SQFT	SQM	SQFT	SQM	SQFT
2	206   306   406   506   606 706   806   906   1006   1106 1206   1305	125.11	1346.67	26.92	289.76	152.03	1636.44

Key plan



Disclaimer: All measurements, dimensions, coordinates, and drawings provided as the Floor Plans in the literature are approximate and provided only for the purpose of marketing, illustration, information, and general guidance, as these drawings are not to scale. All the rooms, sizes, locations, orientations, dimensions, fixtures, fittings, finishes, and specifications (including materials, placement, size of rooms, windows, doors, balconies, and built-in wardrobes) provided in the floor plans may vary as the same have been taken from concept designs prior to the actual development/construction. Therefore, their accuracy in relation to the completed construction cannot be confirmed. We make no guarantee, warranty, or representation regarding the accuracy and completeness of the floor plan information, as changes may occur during the development process without notice. Always refer to the latest IFC design available in the sales office for the most accurate representation of all construction details.

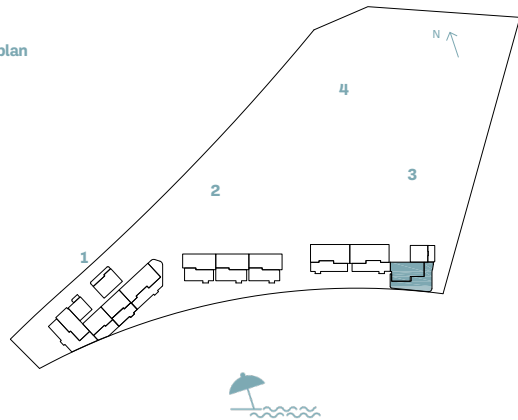
# 2-BEDROOM

## TYPE E

BUILDING	UNIT NUMBER	Suite Area NIA		Balcony Area		Total Area NSA	
		SQM	SQFT	SQM	SQFT	SQM	SQFT
3	G02	142.86	1537.73	154.18	1659.58	297.04	3197.31



Key plan



Disclaimer: All measurements, dimensions, coordinates, and drawings provided as the Floor Plans in the literature are approximate and provided only for the purpose of marketing, illustration, information, and general guidance, as these drawings are not to scale. All the rooms, sizes, locations, orientations, dimensions, fixtures, fittings, finishes, and specifications (including materials, placement, size of rooms, windows, doors, balconies, and built-in wardrobes) provided in the floor plans may vary as the same have been taken from concept designs prior to the actual development/construction. Therefore, their accuracy in relation to the completed construction cannot be confirmed. We make no guarantee, warranty, or representation regarding the accuracy and completeness of the floor plan information, as changes may occur during the development process without notice. Always refer to the latest IFC design available in the sales office for the most accurate representation of all construction details.

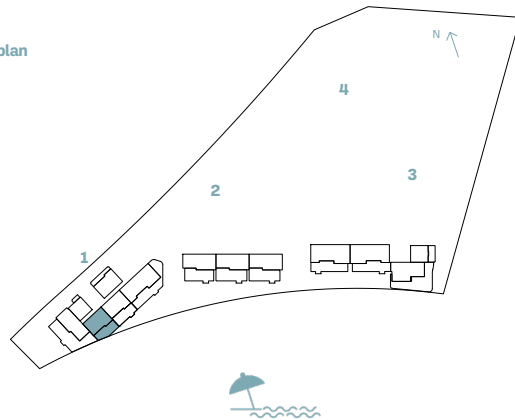
# 2-BEDROOM

## TYPE F

BUILDING	UNIT NUMBER	Suite Area NIA		Balcony Area		Total Area NSA	
		SQM	SQFT	SQM	SQFT	SQM	SQFT
1	G03	103.91	1118.48	58.78	632.70	162.69	1751.18



Key plan

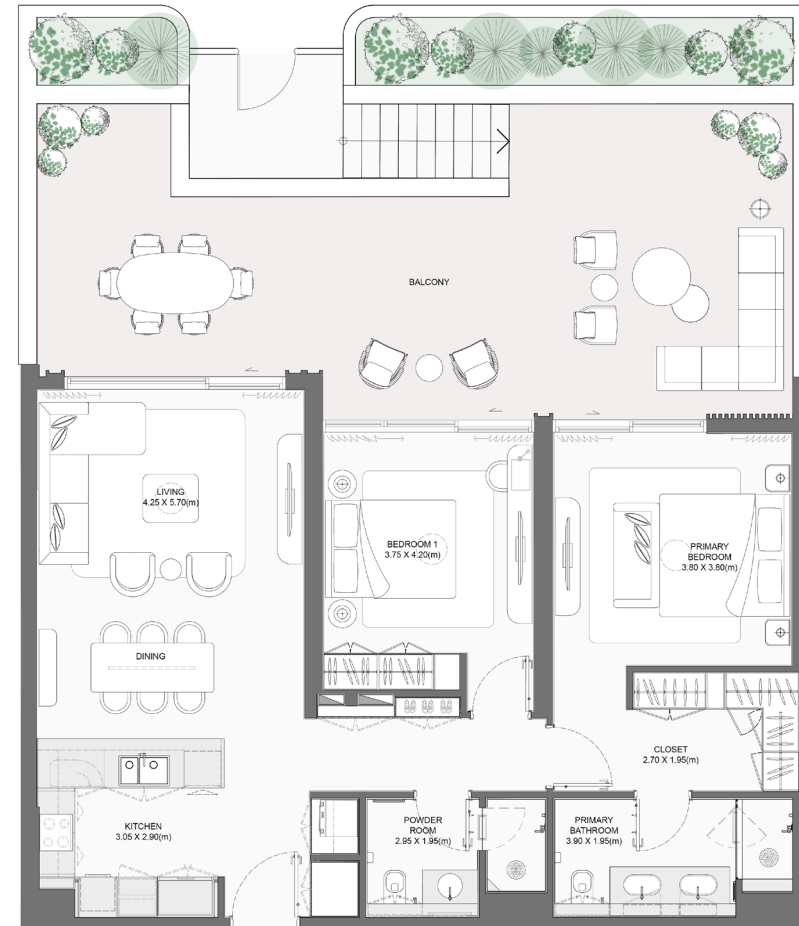


Disclaimer: All measurements, dimensions, coordinates, and drawings provided as the Floor Plans in the literature are approximate and provided only for the purpose of marketing, illustration, information, and general guidance, as these drawings are not to scale. All the rooms, sizes, locations, orientations, dimensions, fixtures, fittings, finishes, and specifications (including materials, placement, size of rooms, windows, doors, balconies, and built-in wardrobes) provided in the floor plans may vary as the same have been taken from concept designs prior to the actual development/construction. Therefore, their accuracy in relation to the completed construction cannot be confirmed. We make no guarantee, warranty, or representation regarding the accuracy and completeness of the floor plan information, as changes may occur during the development process without notice. Always refer to the latest IFC design available in the sales office for the most accurate representation of all construction details.

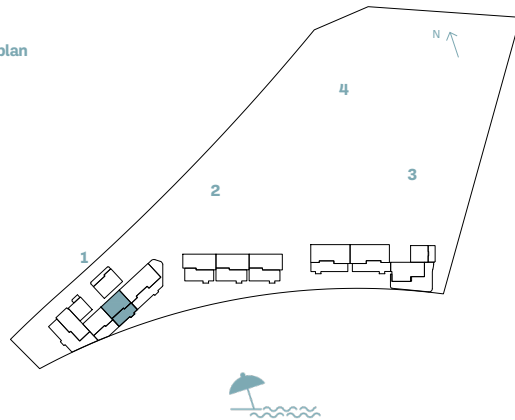
# 2-BEDROOM

## TYPE G

BUILDING	UNIT NUMBER	Suite Area NIA		Balcony Area		Total Area NSA	
		SQM	SQFT	SQM	SQFT	SQM	SQFT
1	G02	103.93	1118.69	66.66	717.52	170.59	1836.22



Key plan



Disclaimer: All measurements, dimensions, coordinates, and drawings provided as the Floor Plans in the literature are approximate and provided only for the purpose of marketing, illustration, information, and general guidance, as these drawings are not to scale. All the rooms, sizes, locations, orientations, dimensions, fixtures, fittings, finishes, and specifications (including materials, placement, size of rooms, windows, doors, balconies, and built-in wardrobes) provided in the floor plans may vary as the same have been taken from concept designs prior to the actual development/construction. Therefore, their accuracy in relation to the completed construction cannot be confirmed. We make no guarantee, warranty, or representation regarding the accuracy and completeness of the floor plan information, as changes may occur during the development process without notice. Always refer to the latest IFC design available in the sales office for the most accurate representation of all construction details.

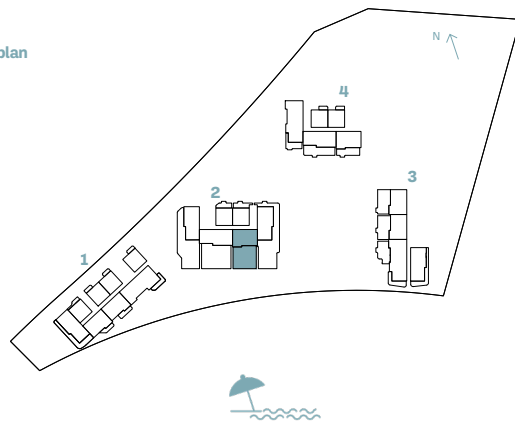
# 2-BEDROOM

## TYPE H

BUILDING	UNIT NUMBER	Suite Area NIA		Balcony Area		Total Area NSA	
		SQM	SQFT	SQM	SQFT	SQM	SQFT
2	104	103.96	1119.02	134.99	1453.02	238.95	2572.04



Key plan

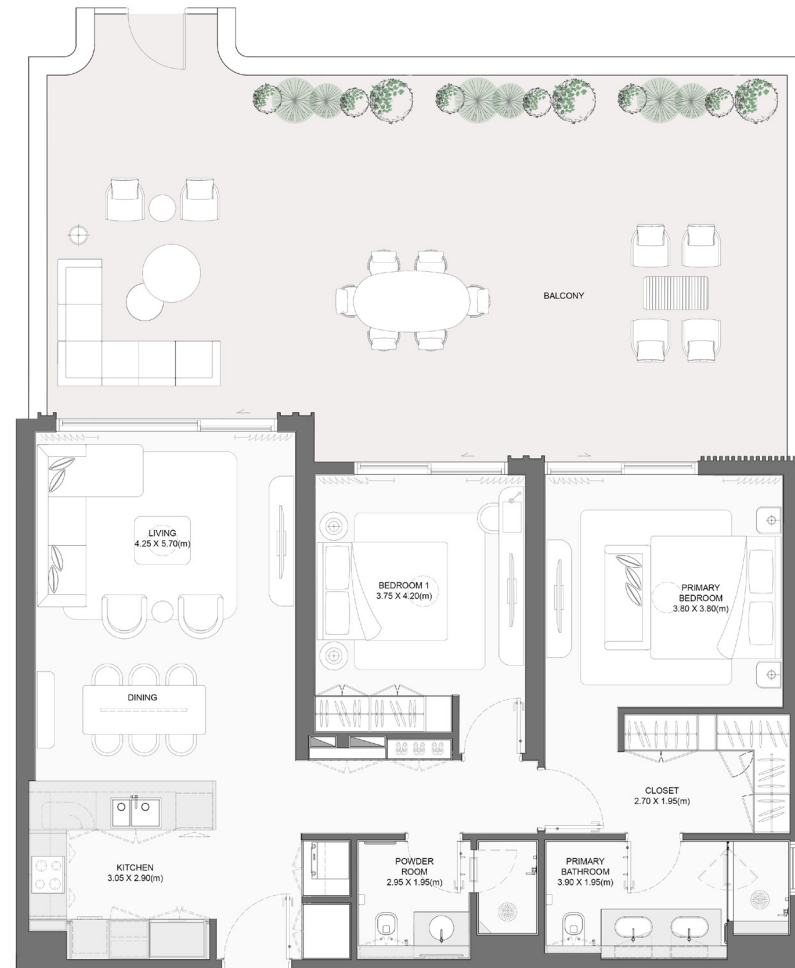


Disclaimer: All measurements, dimensions, coordinates, and drawings provided as the Floor Plans in the literature are approximate and provided only for the purpose of marketing, illustration, information, and general guidance, as these drawings are not to scale. All the rooms, sizes, locations, orientations, dimensions, fixtures, fittings, finishes, and specifications (including materials, placement, size of rooms, windows, doors, balconies, and built-in wardrobes) provided in the floor plans may vary as the same have been taken from concept designs prior to the actual development/construction. Therefore, their accuracy in relation to the completed construction cannot be confirmed. We make no guarantee, warranty, or representation regarding the accuracy and completeness of the floor plan information, as changes may occur during the development process without notice. Always refer to the latest IFC design available in the sales office for the most accurate representation of all construction details.

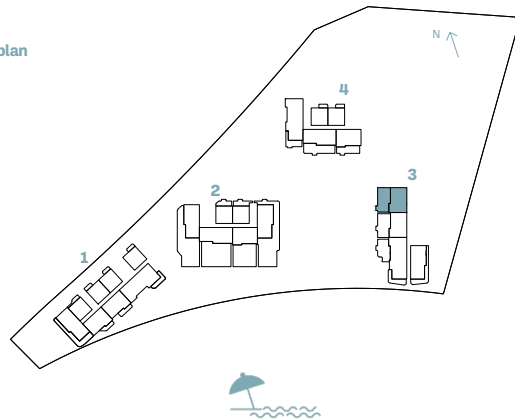
# 2-BEDROOM

## TYPE 1

BUILDING	UNIT NUMBER	Suite Area NIA		Balcony Area		Total Area NSA	
		SQM	SQFT	SQM	SQFT	SQM	SQFT
3	104	103.90	1118.37	79.98	860.90	183.88	1979.27



Key plan



Disclaimer: All measurements, dimensions, coordinates, and drawings provided as the Floor Plans in the literature are approximate and provided only for the purpose of marketing, illustration, information, and general guidance, as these drawings are not to scale. All the rooms, sizes, locations, orientations, dimensions, fixtures, fittings, finishes, and specifications (including materials, placement, size of rooms, windows, doors, balconies, and built-in wardrobes) provided in the floor plans may vary as the same have been taken from concept designs prior to the actual development/construction. Therefore, their accuracy in relation to the completed construction cannot be confirmed. We make no guarantee, warranty, or representation regarding the accuracy and completeness of the floor plan information, as changes may occur during the development process without notice. Always refer to the latest IFC design available in the sales office for the most accurate representation of all construction details.

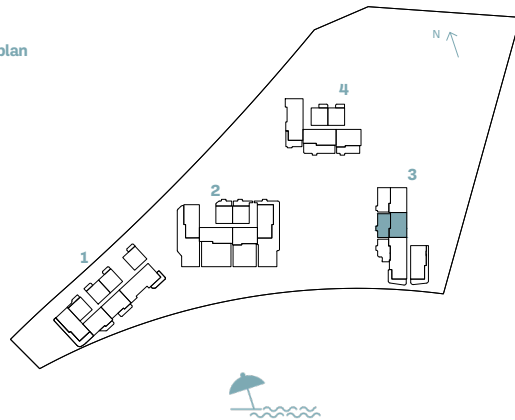
# 2-BEDROOM

## TYPE J

BUILDING	UNIT NUMBER	Suite Area NIA		Balcony Area		Total Area NSA	
		SQM	SQFT	SQM	SQFT	SQM	SQFT
3	103	103.93	1118.69	77.76	837.00	181.69	1955.69



Key plan



Disclaimer: All measurements, dimensions, coordinates, and drawings provided as the Floor Plans in the literature are approximate and provided only for the purpose of marketing, illustration, information, and general guidance, as these drawings are not to scale. All the rooms, sizes, locations, orientations, dimensions, fixtures, fittings, finishes, and specifications (including materials, placement, size of rooms, windows, doors, balconies, and built-in wardrobes) provided in the floor plans may vary as the same have been taken from concept designs prior to the actual development/construction. Therefore, their accuracy in relation to the completed construction cannot be confirmed. We make no guarantee, warranty, or representation regarding the accuracy and completeness of the floor plan information, as changes may occur during the development process without notice. Always refer to the latest IFC design available in the sales office for the most accurate representation of all construction details.



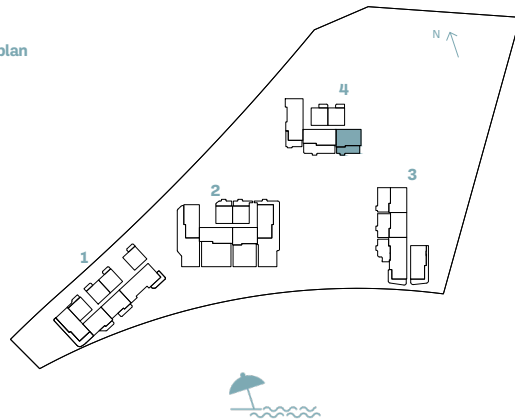
# 2-BEDROOM

## TYPE K

BUILDING	UNIT NUMBER	Suite Area NIA		Balcony Area		Total Area NSA	
		SQM	SQFT	SQM	SQFT	SQM	SQFT
4	101	103.97	1119.12	46.14	496.65	150.11	1615.77



Key plan



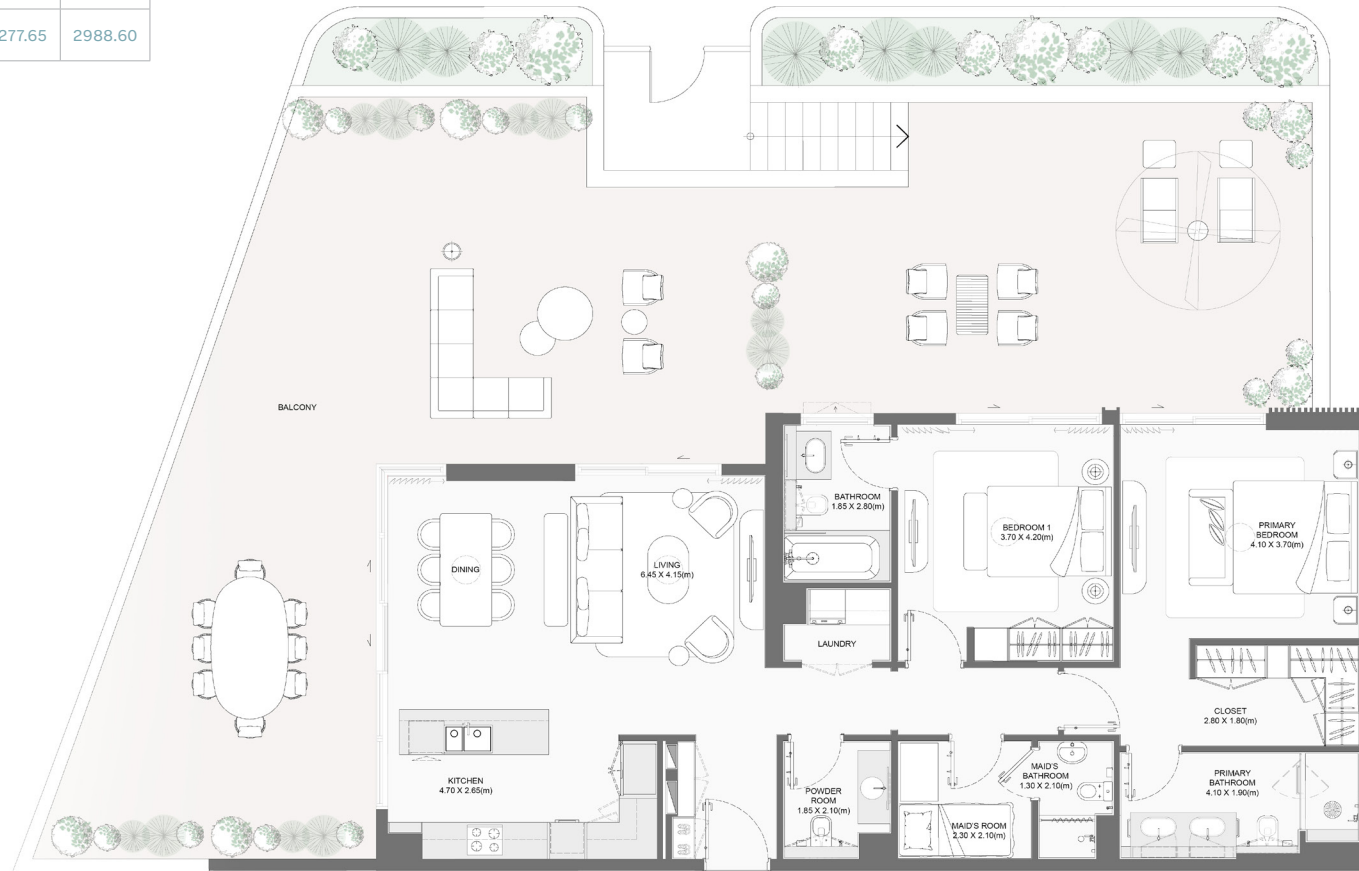
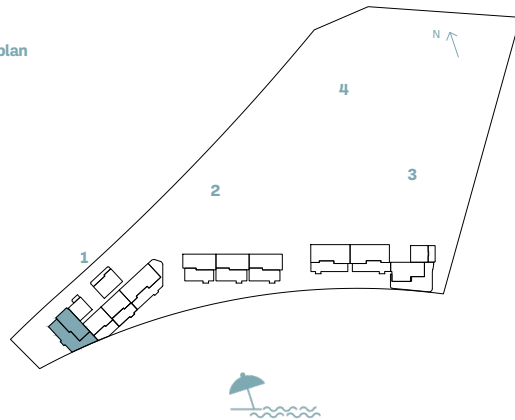
Disclaimer: All measurements, dimensions, coordinates, and drawings provided as the Floor Plans in the literature are approximate and provided only for the purpose of marketing, illustration, information, and general guidance, as these drawings are not to scale. All the rooms, sizes, locations, orientations, dimensions, fixtures, fittings, finishes, and specifications (including materials, placement, size of rooms, windows, doors, balconies, and built-in wardrobes) provided in the floor plans may vary as the same have been taken from concept designs prior to the actual development/construction. Therefore, their accuracy in relation to the completed construction cannot be confirmed. We make no guarantee, warranty, or representation regarding the accuracy and completeness of the floor plan information, as changes may occur during the development process without notice. Always refer to the latest IFC design available in the sales office for the most accurate representation of all construction details.

# 2-BEDROOM

## TYPE L

BUILDING	UNIT NUMBER	Suite Area NIA		Balcony Area		Total Area NSA	
		SQM	SQFT	SQM	SQFT	SQM	SQFT
1	G04	125.01	1345.60	152.64	1643.00	277.65	2988.60

Key plan



Disclaimer: All measurements, dimensions, coordinates, and drawings provided as the Floor Plans in the literature are approximate and provided only for the purpose of marketing, illustration, information, and general guidance, as these drawings are not to scale. All the rooms, sizes, locations, orientations, dimensions, fixtures, fittings, finishes, and specifications (including materials, placement, size of rooms, windows, doors, balconies, and built-in wardrobes) provided in the floor plans may vary as the same have been taken from concept designs prior to the actual development/construction. Therefore, their accuracy in relation to the completed construction cannot be confirmed. We make no guarantee, warranty, or representation regarding the accuracy and completeness of the floor plan information, as changes may occur during the development process without notice. Always refer to the latest IFC design available in the sales office for the most accurate representation of all construction details.

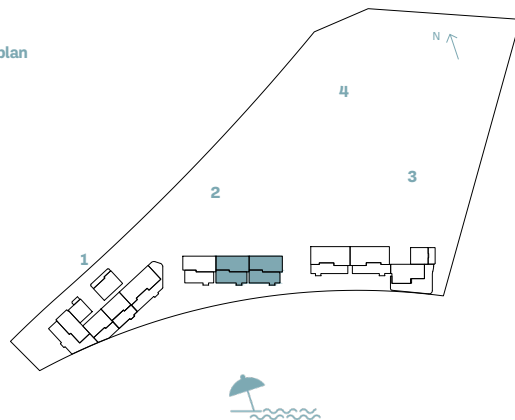
# 2-BEDROOM

## TYPE M

BUILDING	UNIT NUMBER	Suite Area NIA		Balcony Area		Total Area NSA	
		SQM	SQFT	SQM	SQFT	SQM	SQFT
2	G01   G02	125.01	1345.60	97.69 TO 97.21	1046.36 TO 1051.53	222.22 TO 222.70	2391.96 TO 2397.12



Key plan

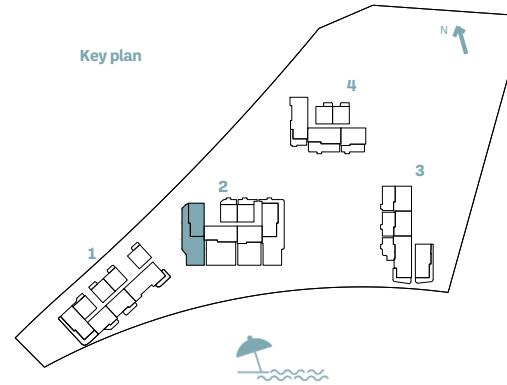


Disclaimer: All measurements, dimensions, coordinates, and drawings provided as the Floor Plans in the literature are approximate and provided only for the purpose of marketing, illustration, information, and general guidance, as these drawings are not to scale. All the rooms, sizes, locations, orientations, dimensions, fixtures, fittings, finishes, and specifications (including materials, placement, size of rooms, windows, doors, balconies, and built-in wardrobes) provided in the floor plans may vary as the same have been taken from concept designs prior to the actual development/construction. Therefore, their accuracy in relation to the completed construction cannot be confirmed. We make no guarantee, warranty, or representation regarding the accuracy and completeness of the floor plan information, as changes may occur during the development process without notice. Always refer to the latest IFC design available in the sales office for the most accurate representation of all construction details.

# 2-BEDROOM

## TYPE N

BUILDING	UNIT NUMBER	Suite Area NIA		Balcony Area		Total Area NSA	
		SQM	SQFT	SQM	SQFT	SQM	SQFT
2	106	125.35	1349.26	207.05	2228.67	332.40	3577.92



Disclaimer: All measurements, dimensions, coordinates, and drawings provided as the Floor Plans in the literature are approximate and provided only for the purpose of marketing, illustration, information, and general guidance, as these drawings are not to scale. All the rooms, sizes, locations, orientations, dimensions, fixtures, fittings, finishes, and specifications (including materials, placement, size of rooms, windows, doors, balconies, and built-in wardrobes) provided in the floor plans may vary as the same have been taken from concept designs prior to the actual development/construction. Therefore, their accuracy in relation to the completed construction cannot be confirmed. We make no guarantee, warranty, or representation regarding the accuracy and completeness of the floor plan information, as changes may occur during the development process without notice. Always refer to the latest IFC design available in the sales office for the most accurate representation of all construction details.

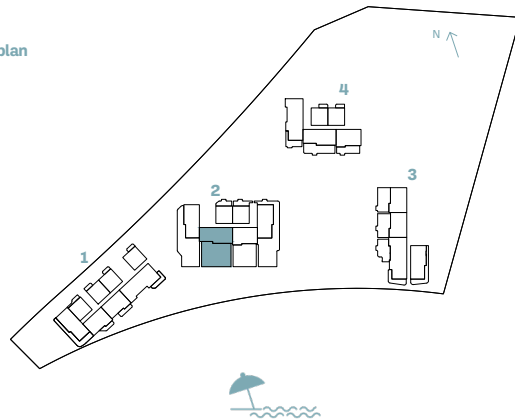
# 2-BEDROOM

## TYPE O

BUILDING	UNIT NUMBER	Suite Area NIA		Balcony Area		Total Area NSA	
		SQM	SQFT	SQM	SQFT	SQM	SQFT
2	105	125.06	1346.13	182.91	1968.83	307.97	3314.96



Key plan

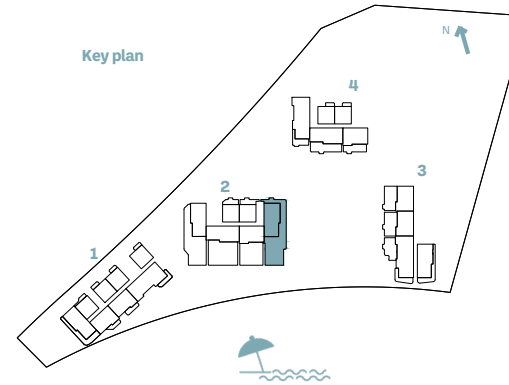


Disclaimer: All measurements, dimensions, coordinates, and drawings provided as the Floor Plans in the literature are approximate and provided only for the purpose of marketing, illustration, information, and general guidance, as these drawings are not to scale. All the rooms, sizes, locations, orientations, dimensions, fixtures, fittings, finishes, and specifications (including materials, placement, size of rooms, windows, doors, balconies, and built-in wardrobes) provided in the floor plans may vary as the same have been taken from concept designs prior to the actual development/construction. Therefore, their accuracy in relation to the completed construction cannot be confirmed. We make no guarantee, warranty, or representation regarding the accuracy and completeness of the floor plan information, as changes may occur during the development process without notice. Always refer to the latest IFC design available in the sales office for the most accurate representation of all construction details.

# 2-BEDROOM

## TYPE P

BUILDING	UNIT NUMBER	Suite Area NIA		Balcony Area		Total Area NSA	
		SQM	SQFT	SQM	SQFT	SQM	SQFT
2	103	125.38	1349.58	232.40	2501.53	357.78	3851.11



Disclaimer: All measurements, dimensions, coordinates, and drawings provided as the Floor Plans in the literature are approximate and provided only for the purpose of marketing, illustration, information, and general guidance, as these drawings are not to scale. All the rooms, sizes, locations, orientations, dimensions, fixtures, fittings, finishes, and specifications (including materials, placement, size of rooms, windows, doors, balconies, and built-in wardrobes) provided in the floor plans may vary as the same have been taken from concept designs prior to the actual development/construction. Therefore, their accuracy in relation to the completed construction cannot be confirmed. We make no guarantee, warranty, or representation regarding the accuracy and completeness of the floor plan information, as changes may occur during the development process without notice. Always refer to the latest IFC design available in the sales office for the most accurate representation of all construction details.

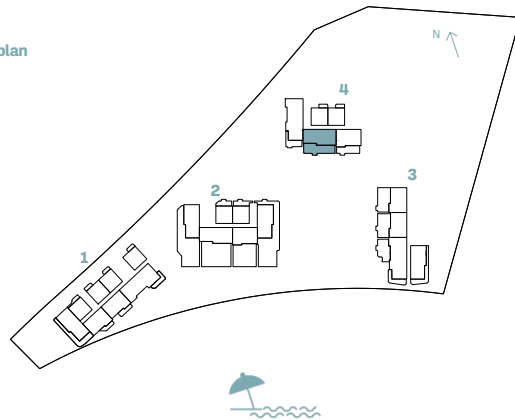
# 2-BEDROOM

## TYPE Q

BUILDING	UNIT NUMBER	Suite Area NIA		Balcony Area		Total Area NSA	
		SQM	SQFT	SQM	SQFT	SQM	SQFT
4	102	124.97	1345.17	74.79	805.03	199.76	2150.20



Key plan



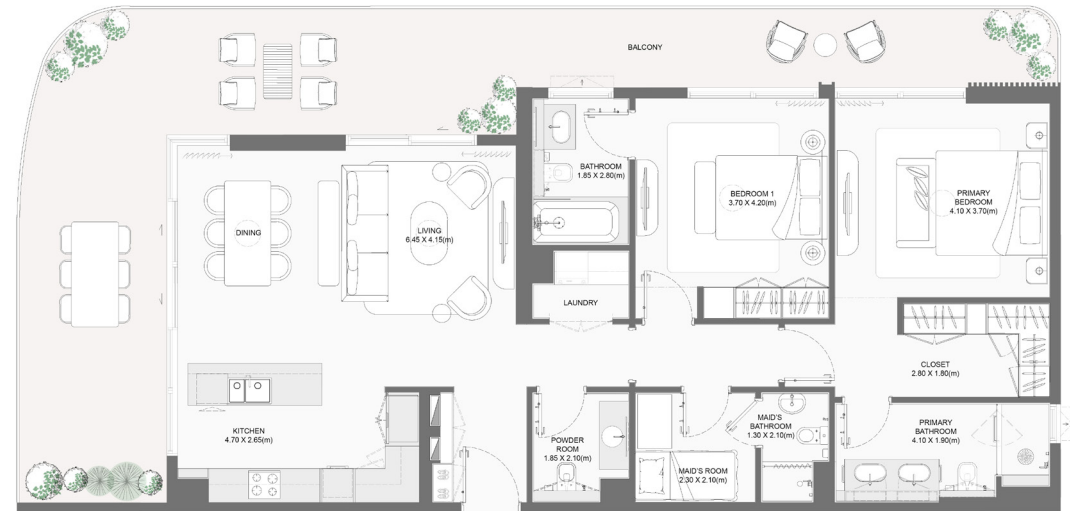
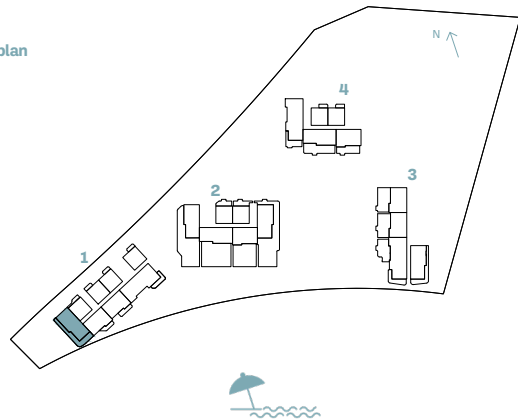
Disclaimer: All measurements, dimensions, coordinates, and drawings provided as the Floor Plans in the literature are approximate and provided only for the purpose of marketing, illustration, information, and general guidance, as these drawings are not to scale. All the rooms, sizes, locations, orientations, dimensions, fixtures, fittings, finishes, and specifications (including materials, placement, size of rooms, windows, doors, balconies, and built-in wardrobes) provided in the floor plans may vary as the same have been taken from concept designs prior to the actual development/construction. Therefore, their accuracy in relation to the completed construction cannot be confirmed. We make no guarantee, warranty, or representation regarding the accuracy and completeness of the floor plan information, as changes may occur during the development process without notice. Always refer to the latest IFC design available in the sales office for the most accurate representation of all construction details.

# 2-BEDROOM

## TYPE R

BUILDING	UNIT NUMBER	Suite Area NIA		Balcony Area		Total Area NSA	
		SQM	SQFT	SQM	SQFT	SQM	SQFT
1	105	125.01	1345.60	59.96	645.40	184.97	1991.00

Key plan



Disclaimer: All measurements, dimensions, coordinates, and drawings provided as the Floor Plans in the literature are approximate and provided only for the purpose of marketing, illustration, information, and general guidance, as these drawings are not to scale. All the rooms, sizes, locations, orientations, dimensions, fixtures, fittings, finishes, and specifications (including materials, placement, size of rooms, windows, doors, balconies, and built-in wardrobes) provided in the floor plans may vary as the same have been taken from concept designs prior to the actual development/construction. Therefore, their accuracy in relation to the completed construction cannot be confirmed. We make no guarantee, warranty, or representation regarding the accuracy and completeness of the floor plan information, as changes may occur during the development process without notice. Always refer to the latest IFC design available in the sales office for the most accurate representation of all construction details.

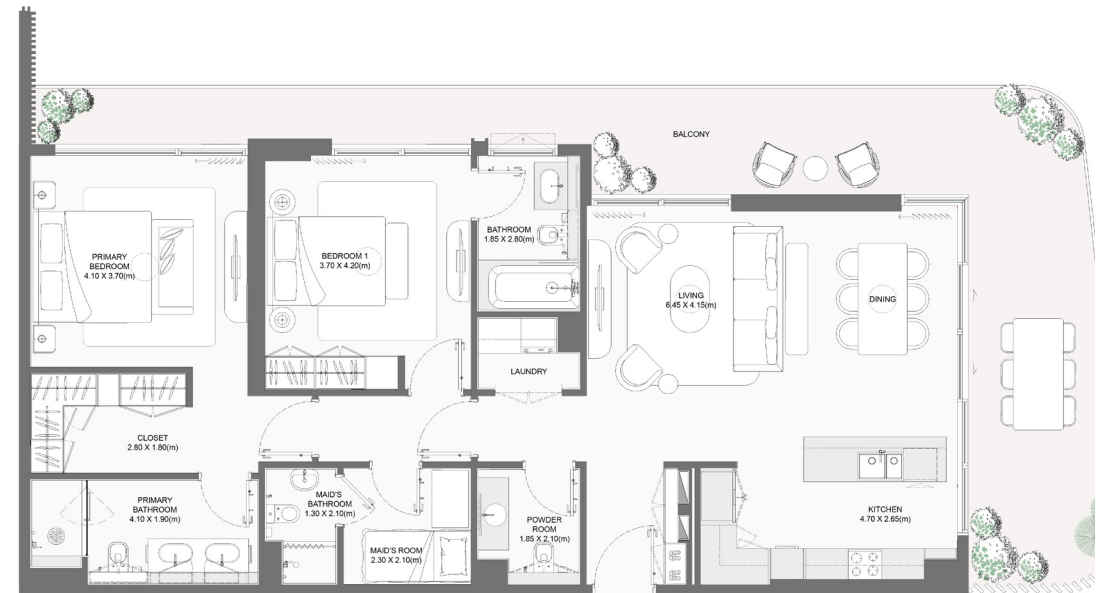
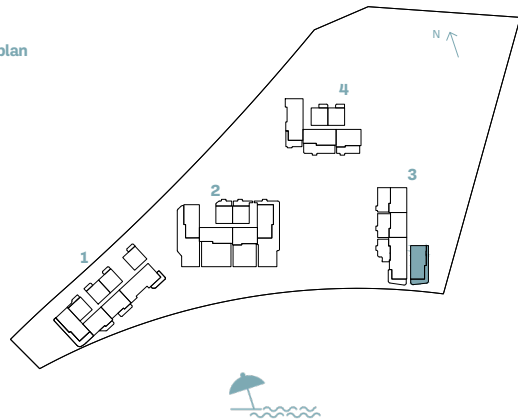


# 2-BEDROOM

## TYPE S

BUILDING	UNIT NUMBER	Suite Area NIA		Balcony Area		Total Area NSA	
		SQM	SQFT	SQM	SQFT	SQM	SQFT
3	101	125.23	1347.96	47.50	511.29	172.73	1859.25

Key plan



Disclaimer: All measurements, dimensions, coordinates, and drawings provided as the Floor Plans in the literature are approximate and provided only for the purpose of marketing, illustration, information, and general guidance, as these drawings are not to scale. All the rooms, sizes, locations, orientations, dimensions, fixtures, fittings, finishes, and specifications (including materials, placement, size of rooms, windows, doors, balconies, and built-in wardrobes) provided in the floor plans may vary as the same have been taken from concept designs prior to the actual development/construction. Therefore, their accuracy in relation to the completed construction cannot be confirmed. We make no guarantee, warranty, or representation regarding the accuracy and completeness of the floor plan information, as changes may occur during the development process without notice. Always refer to the latest IFC design available in the sales office for the most accurate representation of all construction details.

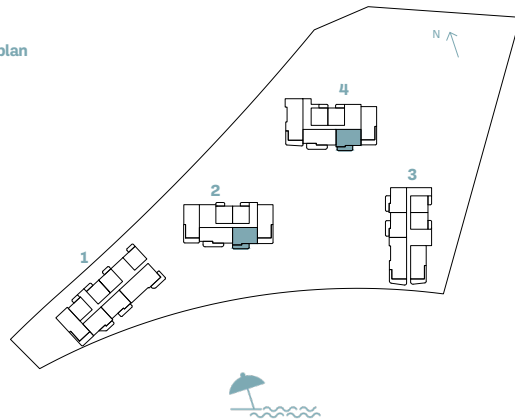
# 2-BEDROOM

## TYPE T

BUILDING	UNIT NUMBER	Suite Area NIA		Balcony Area		Total Area NSA	
		SQM	SQFT	SQM	SQFT	SQM	SQFT
4	202   302   402   502   602   702   802   902   1002   1102   1202   1302   1402   1502   1602   1702   1802   1901	103.89	1118.26	17.54	188.80	121.43	1307.06
2	204   304   404   504   604   704   804   904   1004   1104   1204   1303	103.85	1117.83	17.56	189.01	121.41	1306.85



Key plan



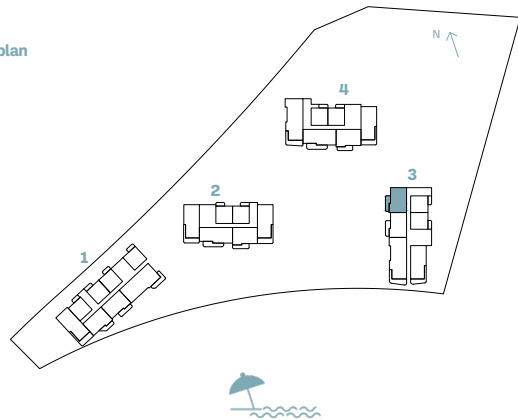
Disclaimer: All measurements, dimensions, coordinates, and drawings provided as the Floor Plans in the literature are approximate and provided only for the purpose of marketing, illustration, information, and general guidance, as these drawings are not to scale. All the rooms, sizes, locations, orientations, dimensions, fixtures, fittings, finishes, and specifications (including materials, placement, size of rooms, windows, doors, balconies, and built-in wardrobes) provided in the floor plans may vary as the same have been taken from concept designs prior to the actual development/construction. Therefore, their accuracy in relation to the completed construction cannot be confirmed. We make no guarantee, warranty, or representation regarding the accuracy and completeness of the floor plan information, as changes may occur during the development process without notice. Always refer to the latest IFC design available in the sales office for the most accurate representation of all construction details.

# 2-BEDROOM

## TYPE U

BUILDING	UNIT NUMBER	Suite Area NIA		Balcony Area		Total Area NSA	
		SQM	SQFT	SQM	SQFT	SQM	SQFT
3	204   304   404   504   604   702	103.79	1117.19	17.44	187.72	121.23	1304.91

Key plan



Disclaimer: All measurements, dimensions, coordinates, and drawings provided as the Floor Plans in the literature are approximate and provided only for the purpose of marketing, illustration, information, and general guidance, as these drawings are not to scale. All the rooms, sizes, locations, orientations, dimensions, fixtures, fittings, finishes, and specifications (including materials, placement, size of rooms, windows, doors, balconies, and built-in wardrobes) provided in the floor plans may vary as the same have been taken from concept designs prior to the actual development/construction. Therefore, their accuracy in relation to the completed construction cannot be confirmed. We make no guarantee, warranty, or representation regarding the accuracy and completeness of the floor plan information, as changes may occur during the development process without notice. Always refer to the latest IFC design available in the sales office for the most accurate representation of all construction details.

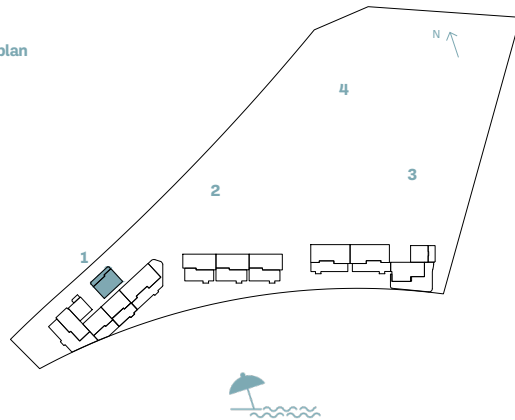
# 2 BEDROOM

## TYPE V

BUILDING	UNIT NUMBER	Suite Area NIA		Balcony Area		Total Area NSA	
		SQM	SQFT	SQM	SQFT	SQM	SQFT
1	G06	104.38	1123.54	28.21	303.65	132.59	1427.19



Key plan



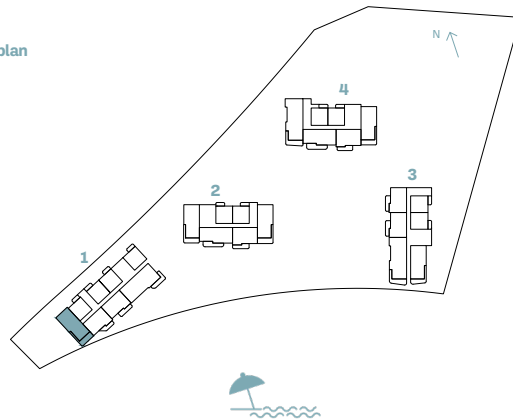
Disclaimer: All measurements, dimensions, coordinates, and drawings provided as the Floor Plans in the literature are approximate and provided only for the purpose of marketing, illustration, information, and general guidance, as these drawings are not to scale. All the rooms, sizes, locations, orientations, dimensions, fixtures, fittings, finishes, and specifications (including materials, placement, size of rooms, windows, doors, balconies, and built-in wardrobes) provided in the floor plans may vary as the same have been taken from concept designs prior to the actual development/construction. Therefore, their accuracy in relation to the completed construction cannot be confirmed. We make no guarantee, warranty, or representation regarding the accuracy and completeness of the floor plan information, as changes may occur during the development process without notice. Always refer to the latest IFC design available in the sales office for the most accurate representation of all construction details.

# 2-BEDROOM

## TYPE W

BUILDING	UNIT NUMBER	Suite Area NIA		Balcony Area		Total Area NSA	
		SQM	SQFT	SQM	SQFT	SQM	SQFT
1	205   305   405	124.78	1343.12	29.82	320.98	154.60	1664.10

Key plan



Disclaimer: All measurements, dimensions, coordinates, and drawings provided as the Floor Plans in the literature are approximate and provided only for the purpose of marketing, illustration, information, and general guidance, as these drawings are not to scale. All the rooms, sizes, locations, orientations, dimensions, fixtures, fittings, finishes, and specifications (including materials, placement, size of rooms, windows, doors, balconies, and built-in wardrobes) provided in the floor plans may vary as the same have been taken from concept designs prior to the actual development/construction. Therefore, their accuracy in relation to the completed construction cannot be confirmed. We make no guarantee, warranty, or representation regarding the accuracy and completeness of the floor plan information, as changes may occur during the development process without notice. Always refer to the latest IFC design available in the sales office for the most accurate representation of all construction details.

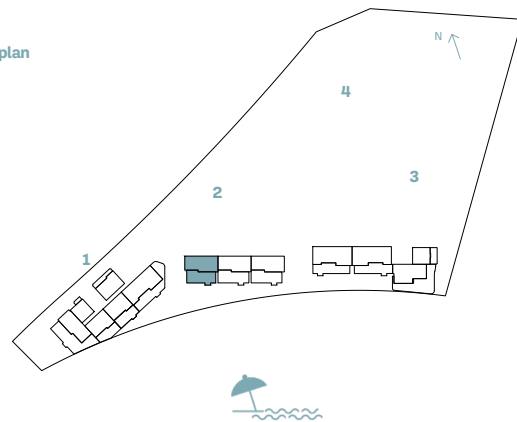
# 2-BEDROOM

## TYPE X

BUILDING	UNIT NUMBER	Suite Area NIA		Balcony Area		Total Area NSA	
		SQM	SQFT	SQM	SQFT	SQM	SQFT
2	G03	125.00	1345.49	91.17	981.35	216.17	2326.83



Key plan



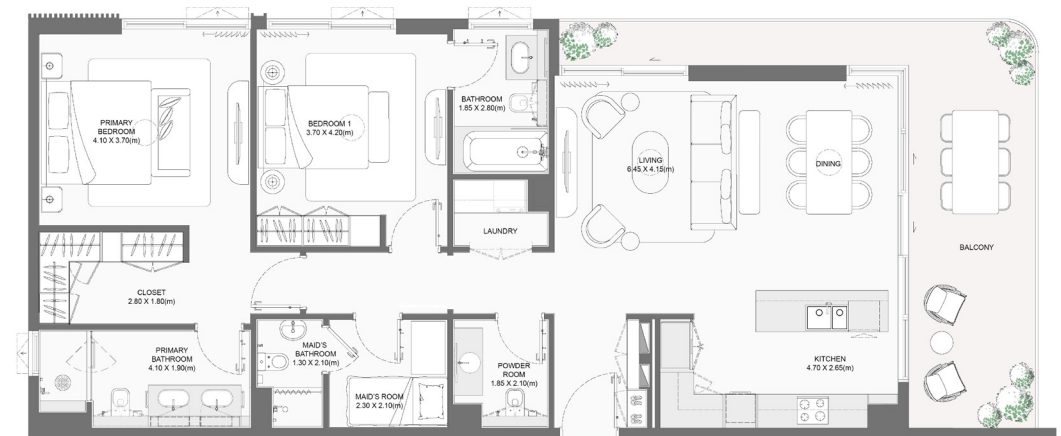
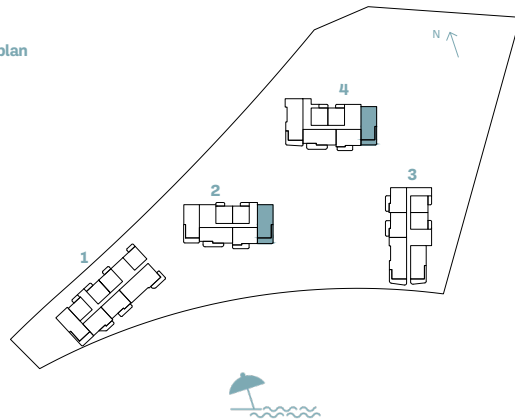
Disclaimer: All measurements, dimensions, coordinates, and drawings provided as the Floor Plans in the literature are approximate and provided only for the purpose of marketing, illustration, information, and general guidance, as these drawings are not to scale. All the rooms, sizes, locations, orientations, dimensions, fixtures, fittings, finishes, and specifications (including materials, placement, size of rooms, windows, doors, balconies, and built-in wardrobes) provided in the floor plans may vary as the same have been taken from concept designs prior to the actual development/construction. Therefore, their accuracy in relation to the completed construction cannot be confirmed. We make no guarantee, warranty, or representation regarding the accuracy and completeness of the floor plan information, as changes may occur during the development process without notice. Always refer to the latest IFC design available in the sales office for the most accurate representation of all construction details.

# 2-BEDROOM

## TYPE Y

BUILDING	UNIT NUMBER	Suite Area NIA		Balcony Area		Total Area NSA	
		SQM	SQFT	SQM	SQFT	SQM	SQFT
4	201   301   401   501   601   701 801   901   1001   1101   1201   1301   1401   1501   1601   1701   1801	125.13	1346.89	27.07	291.38	152.20	1638.27
2	203   303   403   503   603   703 803   903   1003   1103   1203	125.14	1347.00	27.08	291.49	152.22	1638.48

Key plan



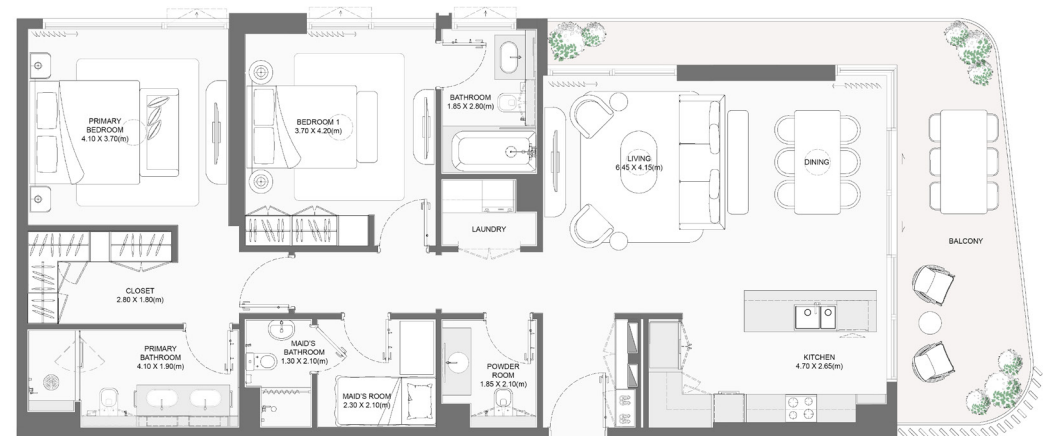
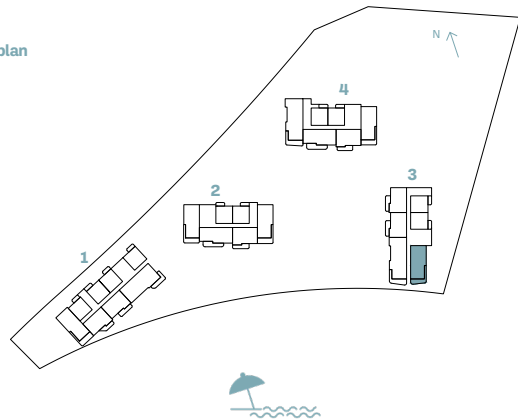
Disclaimer: All measurements, dimensions, coordinates, and drawings provided as the Floor Plans in the literature are approximate and provided only for the purpose of marketing, illustration, information, and general guidance, as these drawings are not to scale. All the rooms, sizes, locations, orientations, dimensions, fixtures, fittings, finishes, and specifications (including materials, placement, size of rooms, windows, doors, balconies, and built-in wardrobes) provided in the floor plans may vary as the same have been taken from concept designs prior the actual development/construction. Therefore, their accuracy in relation to the completed construction cannot be confirmed. We make no guarantee, warranty, or representation regarding the accuracy and completeness of the floor plan information, as changes may occur during the development process without notice. Always refer to the latest IFC design available in the sales office for the most accurate representation of all construction details.

# 2-BEDROOM

## TYPE Z

BUILDING	UNIT NUMBER	Suite Area NIA		Balcony Area		Total Area NSA	
		SQM	SQFT	SQM	SQFT	SQM	SQFT
3	201   301   401   501	124.80	1343.34	25.00	269.10	149.80	1612.43

Key plan



Disclaimer: All measurements, dimensions, coordinates, and drawings provided as the Floor Plans in the literature are approximate and provided only for the purpose of marketing, illustration, information, and general guidance, as these drawings are not to scale. All the rooms, sizes, locations, orientations, dimensions, fixtures, fittings, finishes, and specifications (including materials, placement, size of rooms, windows, doors, balconies, and built-in wardrobes) provided in the floor plans may vary as the same have been taken from concept designs prior the actual development/construction. Therefore, their accuracy in relation to the completed construction cannot be confirmed. We make no guarantee, warranty, or representation regarding the accuracy and completeness of the floor plan information, as changes may occur during the development process without notice. Always refer to the latest IFC design available in the sales office for the most accurate representation of all construction details.



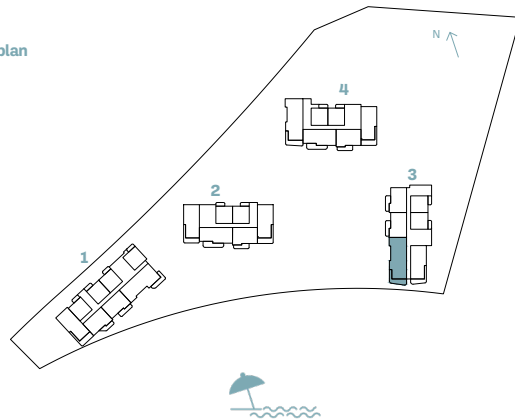


# 3-BEDROOM

## TYPE A

BUILDING	UNIT NUMBER	Suite Area NIA		Balcony Area		Total Area NSA	
		SQM	SQFT	SQM	SQFT	SQM	SQFT
3	202   302   402   502	171.91	1850.42	28.69	308.82	200.60	2159.24

Key plan



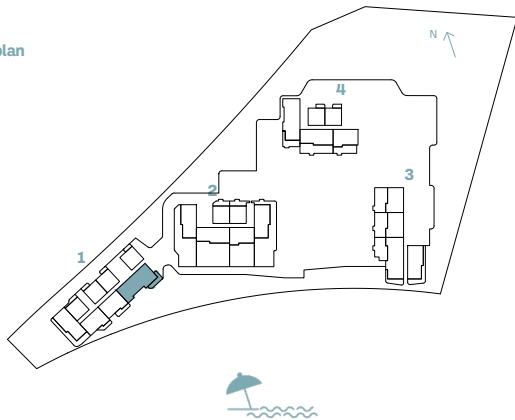
Disclaimer: All measurements, dimensions, coordinates, and drawings provided as the Floor Plans in the literature are approximate and provided only for the purpose of marketing, illustration, information, and general guidance, as these drawings are not to scale. All the rooms, sizes, locations, orientations, dimensions, fixtures, fittings, finishes, and specifications (including materials, placement, size of rooms, windows, doors, balconies, and built-in wardrobes) provided in the floor plans may vary as the same have been taken from concept designs prior to the actual development/construction. Therefore, their accuracy in relation to the completed construction cannot be confirmed. We make no guarantee, warranty, or representation regarding the accuracy and completeness of the floor plan information, as changes may occur during the development process without notice. Always refer to the latest IFC design available in the sales office for the most accurate representation of all construction details.

# 3-BEDROOM

## TYPE B

BUILDING	UNIT NUMBER	Suite Area NIA		Balcony Area		Total Area NSA	
		SQM	SQFT	SQM	SQFT	SQM	SQFT
1	102   202   302   402   502   602   702	174.11	1874.10	22.91	246.60	197.02	2120.71

Key plan



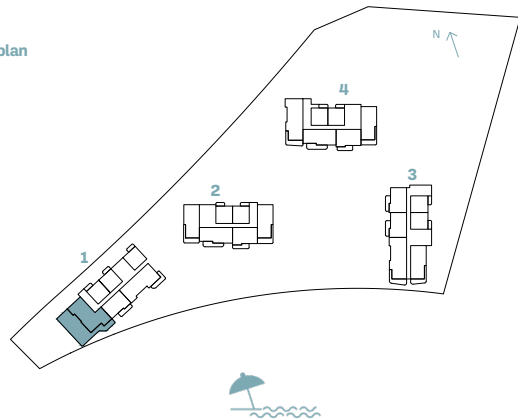
Disclaimer: All measurements, dimensions, coordinates, and drawings provided as the Floor Plans in the literature are approximate and provided only for the purpose of marketing, illustration, information, and general guidance, as these drawings are not to scale. All the rooms, sizes, locations, orientations, dimensions, fixtures, fittings, finishes, and specifications (including materials, placement, size of rooms, windows, doors, balconies, and built-in wardrobes) provided in the floor plans may vary as the same have been taken from concept designs prior to the actual development/construction. Therefore, their accuracy in relation to the completed construction cannot be confirmed. We make no guarantee, warranty, or representation regarding the accuracy and completeness of the floor plan information, as changes may occur during the development process without notice. Always refer to the latest IFC design available in the sales office for the most accurate representation of all construction details.

# 3-BEDROOM

## TYPE C

BUILDING	UNIT NUMBER	Suite Area NIA		Balcony Area		Total Area NSA	
		SQM	SQFT	SQM	SQFT	SQM	SQFT
1	504	176.12	1895.74	184.74	1988.52	360.86	3884.26

Key plan



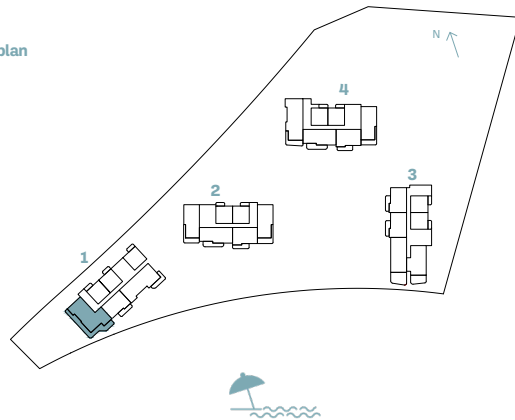
Disclaimer: All measurements, dimensions, coordinates, and drawings provided as the Floor Plans in the literature are approximate and provided only for the purpose of marketing, illustration, information, and general guidance, as these drawings are not to scale. All the rooms, sizes, locations, orientations, dimensions, fixtures, fittings, finishes, and specifications (including materials, placement, size of rooms, windows, doors, balconies, and built-in wardrobes) provided in the floor plans may vary as the same have been taken from concept designs prior to the actual development/construction. Therefore, their accuracy in relation to the completed construction cannot be confirmed. We make no guarantee, warranty, or representation regarding the accuracy and completeness of the floor plan information, as changes may occur during the development process without notice. Always refer to the latest IFC design available in the sales office for the most accurate representation of all construction details.

# 3-BEDROOM

## TYPE D

BUILDING	UNIT NUMBER	Suite Area NIA		Balcony Area		Total Area NSA	
		SQM	SQFT	SQM	SQFT	SQM	SQFT
1	604	176.12	1895.74	75.71	814.94	251.83	2710.68

Key plan



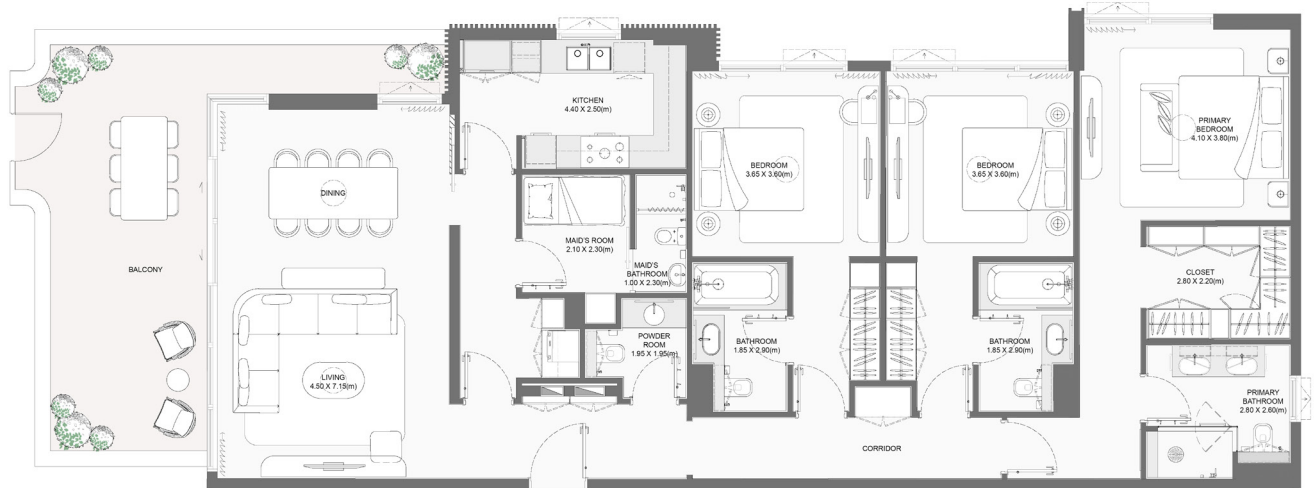
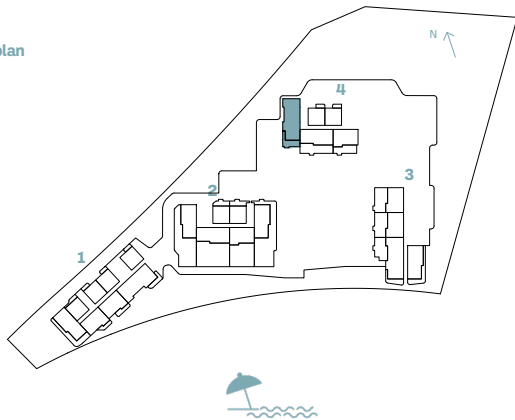
Disclaimer: All measurements, dimensions, coordinates, and drawings provided as the Floor Plans in the literature are approximate and provided only for the purpose of marketing, illustration, information, and general guidance, as these drawings are not to scale. All the rooms, sizes, locations, orientations, dimensions, fixtures, fittings, finishes, and specifications (including materials, placement, size of rooms, windows, doors, balconies, and built-in wardrobes) provided in the floor plans may vary as the same have been taken from concept designs prior the actual development/construction. Therefore, their accuracy in relation to the completed construction cannot be confirmed. We make no guarantee, warranty, or representation regarding the accuracy and completeness of the floor plan information, as changes may occur during the development process without notice. Always refer to the latest IFC design available in the sales office for the most accurate representation of all construction details.

# 3-BEDROOM

## TYPE E

BUILDING	UNIT NUMBER	Suite Area NIA		Balcony Area		Total Area NSA	
		SQM	SQFT	SQM	SQFT	SQM	SQFT
4	103	172.40	1855.70	33.93	365.22	206.33	2220.92

Key plan



Disclaimer: All measurements, dimensions, coordinates, and drawings provided as the Floor Plans in the literature are approximate and provided only for the purpose of marketing, illustration, information, and general guidance, as these drawings are not to scale. All the rooms, sizes, locations, orientations, dimensions, fixtures, fittings, finishes, and specifications (including materials, placement, size of rooms, windows, doors, balconies, and built-in wardrobes) provided in the floor plans may vary as the same have been taken from concept designs prior to the actual development/construction. Therefore, their accuracy in relation to the completed construction cannot be confirmed. We make no guarantee, warranty, or representation regarding the accuracy and completeness of the floor plan information, as changes may occur during the development process without notice. Always refer to the latest IFC design available in the sales office for the most accurate representation of all construction details.

# 3-BEDROOM

## TYPE F

BUILDING	UNIT NUMBER	Suite Area NIA		Balcony Area		Total Area NSA	
		SQM	SQFT	SQM	SQFT	SQM	SQFT
3	102	172.26	1854.19	99.65	1072.62	271.91	2926.81



Key plan



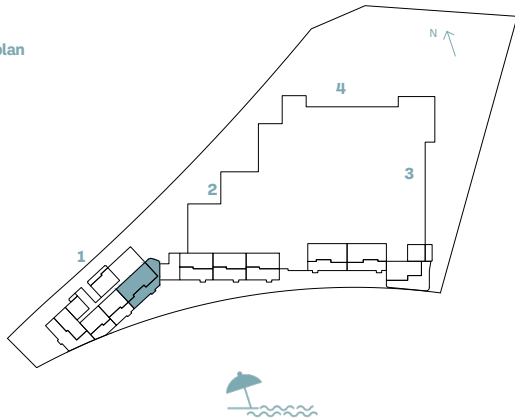
Disclaimer: All measurements, dimensions, coordinates, and drawings provided as the Floor Plans in the literature are approximate and provided only for the purpose of marketing, illustration, information, and general guidance, as these drawings are not to scale. All the rooms, sizes, locations, orientations, dimensions, fixtures, fittings, finishes, and specifications (including materials, placement, size of rooms, windows, doors, balconies, and built-in wardrobes) provided in the floor plans may vary as the same have been taken from concept designs prior to the actual development/construction. Therefore, their accuracy in relation to the completed construction cannot be confirmed. We make no guarantee, warranty, or representation regarding the accuracy and completeness of the floor plan information, as changes may occur during the development process without notice. Always refer to the latest IFC design available in the sales office for the most accurate representation of all construction details.

# 3-BEDROOM

## TYPE G

BUILDING	UNIT NUMBER	Suite Area NIA		Balcony Area		Total Area NSA	
		SQM	SQFT	SQM	SQFT	SQM	SQFT
1	G01	174.57	1879.06	130.34	1402.97	304.91	3282.02

Key plan



Disclaimer: All measurements, dimensions, coordinates, and drawings provided as the Floor Plans in the literature are approximate and provided only for the purpose of marketing, illustration, information, and general guidance, as these drawings are not to scale. All the rooms, sizes, locations, orientations, dimensions, fixtures, fittings, finishes, and specifications (including materials, placement, size of rooms, windows, doors, balconies, and built-in wardrobes) provided in the floor plans may vary as the same have been taken from concept designs prior to the actual development/construction. Therefore, their accuracy in relation to the completed construction cannot be confirmed. We make no guarantee, warranty, or representation regarding the accuracy and completeness of the floor plan information, as changes may occur during the development process without notice. Always refer to the latest IFC design available in the sales office for the most accurate representation of all construction details.



# 3-BEDROOM

## TYPE H

BUILDING	UNIT NUMBER	Suite Area NIA		Balcony Area		Total Area NSA	
		SQM	SQFT	SQM	SQFT	SQM	SQFT
3	G04	174.58	1879.16	93.34	1004.70	267.92	2883.87



Key plan



Disclaimer: All measurements, dimensions, coordinates, and drawings provided as the Floor Plans in the literature are approximate and provided only for the purpose of marketing, illustration, information, and general guidance, as these drawings are not to scale. All the rooms, sizes, locations, orientations, dimensions, fixtures, fittings, finishes, and specifications (including materials, placement, size of rooms, windows, doors, balconies, and built-in wardrobes) provided in the floor plans may vary as the same have been taken from concept designs prior to the actual development/construction. Therefore, their accuracy in relation to the completed construction cannot be confirmed. We make no guarantee, warranty, or representation regarding the accuracy and completeness of the floor plan information, as changes may occur during the development process without notice. Always refer to the latest IFC design available in the sales office for the most accurate representation of all construction details.

# 3-BEDROOM

## TYPE I

BUILDING	UNIT NUMBER	Suite Area NIA		Balcony Area		Total Area NSA	
		SQM	SQFT	SQM	SQFT	SQM	SQFT
3	G03	174.69	1880.35	96.30	1036.56	270.99	2916.91



Key plan



Disclaimer: All measurements, dimensions, coordinates, and drawings provided as the Floor Plans in the literature are approximate and provided only for the purpose of marketing, illustration, information, and general guidance, as these drawings are not to scale. All the rooms, sizes, locations, orientations, dimensions, fixtures, fittings, finishes, and specifications (including materials, placement, size of rooms, windows, doors, balconies, and built-in wardrobes) provided in the floor plans may vary as the same have been taken from concept designs prior to the actual development/construction. Therefore, their accuracy in relation to the completed construction cannot be confirmed. We make no guarantee, warranty, or representation regarding the accuracy and completeness of the floor plan information, as changes may occur during the development process without notice. Always refer to the latest IFC design available in the sales office for the most accurate representation of all construction details.

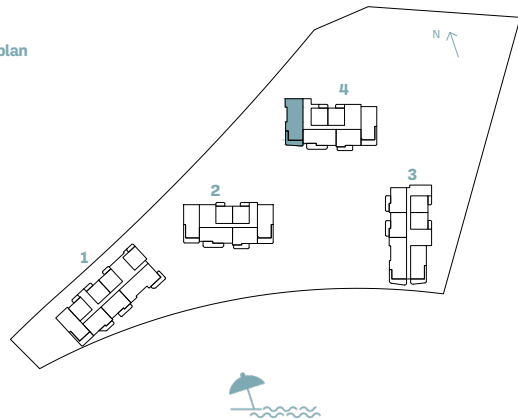
# 3-BEDROOM

## TYPE J

BUILDING	UNIT NUMBER	Suite Area NIA		Balcony Area		Total Area NSA	
		SQM	SQFT	SQM	SQFT	SQM	SQFT
4	404   504   604   704   804   904 1104   1204   1304   1404   1504 1604   1704   1804	172.40	1855.70	29.56	318.18	201.96	2173.88
4	1903	172.44	1856.13	29.56	318.18	202.00	2174.31
4	204   304   1004	172.40	1855.70	29.63	318.93	202.03	2174.63



Key plan



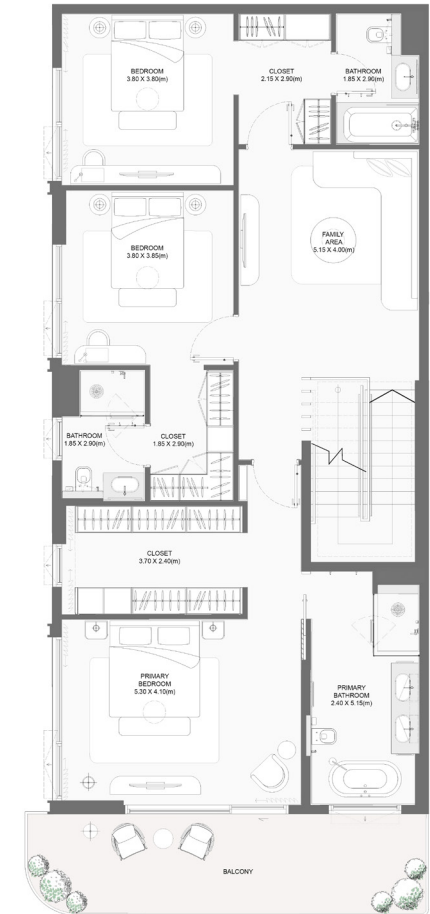
Disclaimer: All measurements, dimensions, coordinates, and drawings provided as the Floor Plans in the literature are approximate and provided only for the purpose of marketing, illustration, information, and general guidance, as these drawings are not to scale. All the rooms, sizes, locations, orientations, dimensions, fixtures, fittings, finishes, and specifications (including materials, placement, size of rooms, windows, doors, balconies, and built-in wardrobes) provided in the floor plans may vary as the same have been taken from concept designs prior the actual development/construction. Therefore, their accuracy in relation to the completed construction cannot be confirmed. We make no guarantee, warranty, or representation regarding the accuracy and completeness of the floor plan information, as changes may occur during the development process without notice. Always refer to the latest IFC design available in the sales office for the most accurate representation of all construction details.

4 BEDROOM

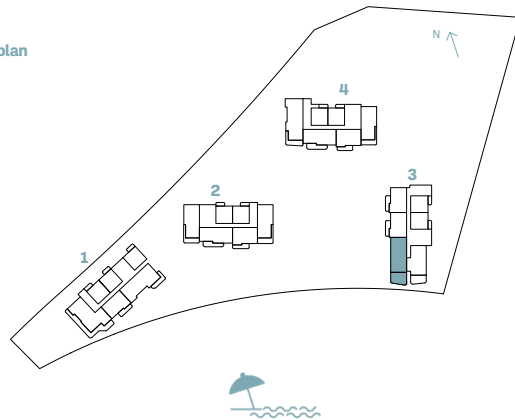
# 4-BEDROOM

## TYPE A

BUILDING	UNIT NUMBER	Suite Area NIA		Balcony Area		Total Area NSA	
		SQM	SQFT	SQM	SQFT	SQM	SQFT
3	602	281.34	3028.32	71.48	769.40	352.82	3797.72



Key plan



Disclaimer: All measurements, dimensions, coordinates, and drawings provided as the Floor Plans in the literature are approximate and provided only for the purpose of marketing, illustration, information, and general guidance, as these drawings are not to scale. All the rooms, sizes, locations, orientations, dimensions, fixtures, fittings, finishes, and specifications (including materials, placement, size of rooms, windows, doors, balconies, and built-in wardrobes) provided in the floor plans may vary as the same have been taken from concept designs prior to the actual development/construction. Therefore, their accuracy in relation to the completed construction cannot be confirmed. We make no guarantee, warranty, or representation regarding the accuracy and completeness of the floor plan information, as changes may occur during the development process without notice. Always refer to the latest IFC design available in the sales office for the most accurate representation of all construction details.

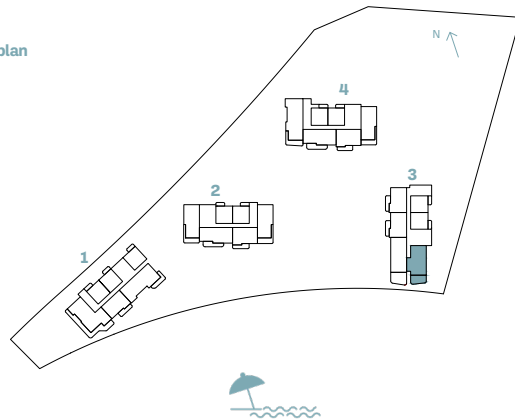
# 4-BEDROOM

## TYPE B

BUILDING	UNIT NUMBER	Suite Area NIA		Balcony Area		Total Area NSA	
		SQM	SQFT	SQM	SQFT	SQM	SQFT
3	601	271.88	2926.49	47.00	505.90	318.88	3432.40



Key plan

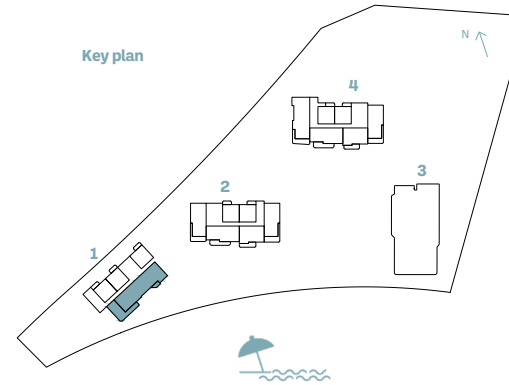


Disclaimer: All measurements, dimensions, coordinates, and drawings provided as the Floor Plans in the literature are approximate and provided only for the purpose of marketing, illustration, information, and general guidance, as these drawings are not to scale. All the rooms, sizes, locations, orientations, dimensions, fixtures, fittings, finishes, and specifications (including materials, placement, size of rooms, windows, doors, balconies, and built-in wardrobes) provided in the floor plans may vary as the same have been taken from concept designs prior to the actual development/construction. Therefore, their accuracy in relation to the completed construction cannot be confirmed. We make no guarantee, warranty, or representation regarding the accuracy and completeness of the floor plan information, as changes may occur during the development process without notice. Always refer to the latest IFC design available in the sales office for the most accurate representation of all construction details.

# 4-BEDROOM

## TYPE C

BUILDING	UNIT NUMBER	Suite Area NIA		Balcony Area		Total Area NSA	
		SQM	SQFT	SQM	SQFT	SQM	SQFT
1	802	236.65	2547.28	79.76	858.53	316.41	3405.81

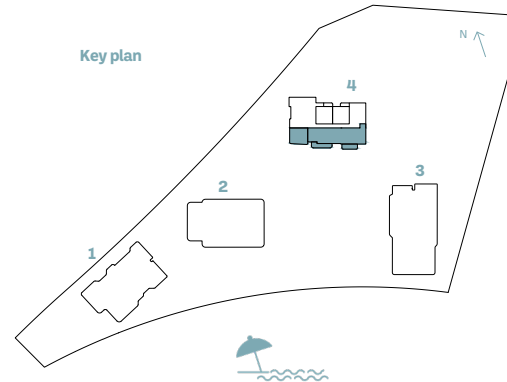


Disclaimer: All measurements, dimensions, coordinates, and drawings provided as the Floor Plans in the literature are approximate and provided only for the purpose of marketing, illustration, information, and general guidance, as these drawings are not to scale. All the rooms, sizes, locations, orientations, dimensions, fixtures, fittings, finishes, and specifications (including materials, placement, size of rooms, windows, doors, balconies, and built-in wardrobes) provided in the floor plans may vary as the same have been taken from concept designs prior the actual development/construction. Therefore, their accuracy in relation to the completed construction cannot be confirmed. We make no guarantee, warranty, or representation regarding the accuracy and completeness of the floor plan information, as changes may occur during the development process without notice. Always refer to the latest IFC design available in the sales office for the most accurate representation of all construction details.

# 4-BEDROOM

## TYPE D

BUILDING	UNIT NUMBER	Suite Area NIA		Balcony Area		Total Area NSA	
		SQM	SQFT	SQM	SQFT	SQM	SQFT
4	2001	234.18	2520.69	117.02	1259.59	351.20	3780.29



Disclaimer: All measurements, dimensions, coordinates, and drawings provided as the Floor Plans in the literature are approximate and provided only for the purpose of marketing, illustration, information, and general guidance, as these drawings are not to scale. All the rooms, sizes, locations, orientations, dimensions, fixtures, fittings, finishes, and specifications (including materials, placement, size of rooms, windows, doors, balconies, and built-in wardrobes) provided in the floor plans may vary as the same have been taken from concept designs prior to the actual development/construction. Therefore, their accuracy in relation to the completed construction cannot be confirmed. We make no guarantee, warranty, or representation regarding the accuracy and completeness of the floor plan information, as changes may occur during the development process without notice. Always refer to the latest IFC design available in the sales office for the most accurate representation of all construction details.





**NAKHEEL**