



**BAYGROVE**  
RESIDENCES

DUBAI ISLANDS

F A C T S H E E T

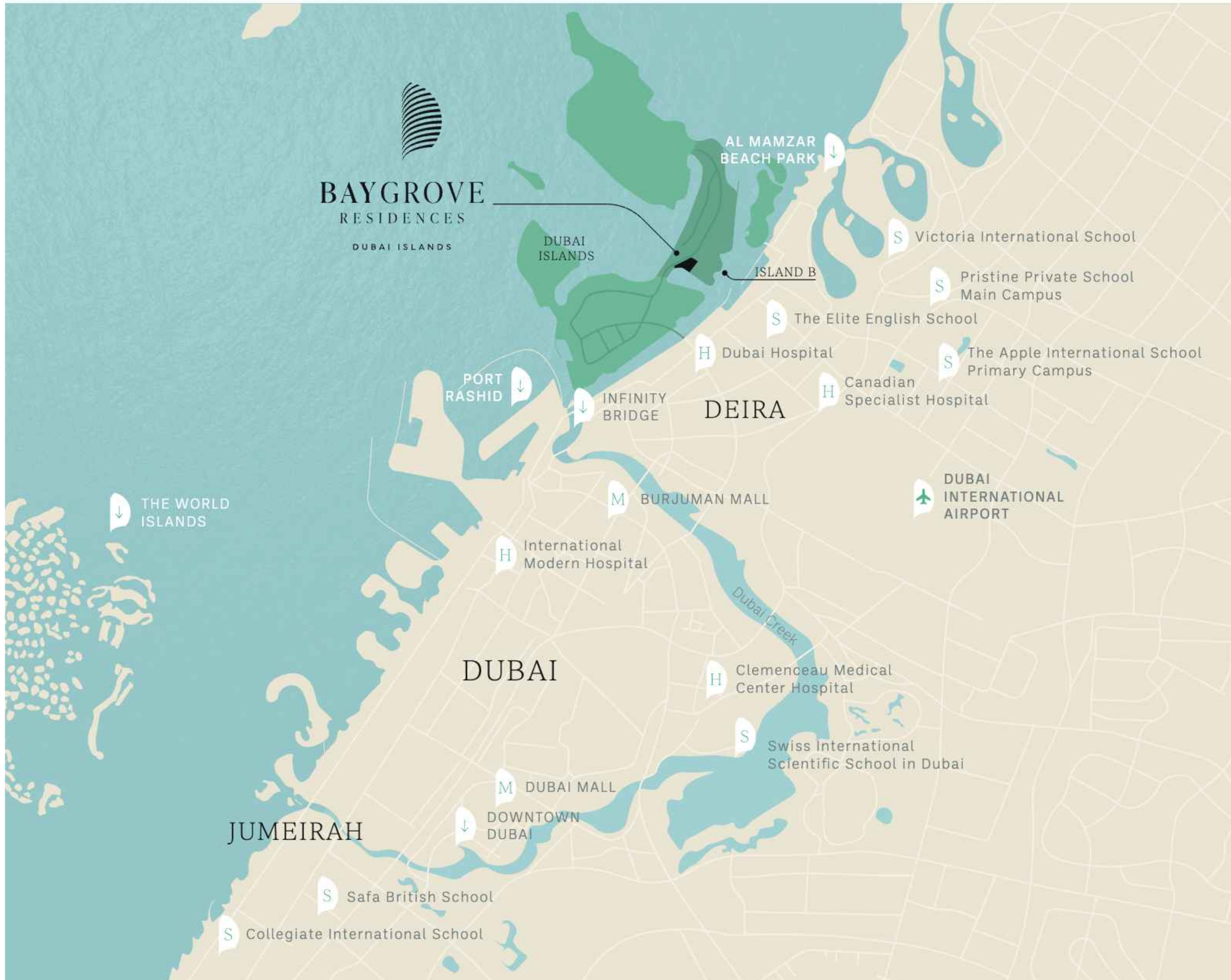
**NAKHEEL**

# MY - Rhythm

THE LOCATION



BAYGROVE  
RESIDENCES  
DUBAI ISLANDS



### ★ Points of Interest

- Infinity Bridge: 6min / 6kms
- Port Rashid: 19min / 12kms
- Dubai International Airport: 18min / 13kms
- Downtown Dubai: 26min / 19kms
- Al Mamzar Beach Park: 26min / 15kms

### 🛒 Malls

- Burjuman Mall: 18min / 11kms
- Dubai Mall: 25min / 18kms

### 🎓 Schools

- Victoria International School: 19min / 12kms
- Pristine Private School Main Campus: 14min / 10kms
- The Elite English School: 6min / 6kms
- The Apple International School Primary Campus: 16min / 11kms
- Swiss International Scientific School in Dubai: 30min / 24kms
- Safa British School: 26min / 20kms
- Collegiate International School: 34min / 30kms

### ⊕ Hospital

- Dubai Hospital: 8min / 6kms
- Canadian Specialist Hospital: 10min / 7kms
- International Modern Hospital: 14min / 10kms
- Clemenceau Medical Center Hospital: 22min / 17kms

Where *your home* is the connection  
to the environment, to yourself, *in harmony*.



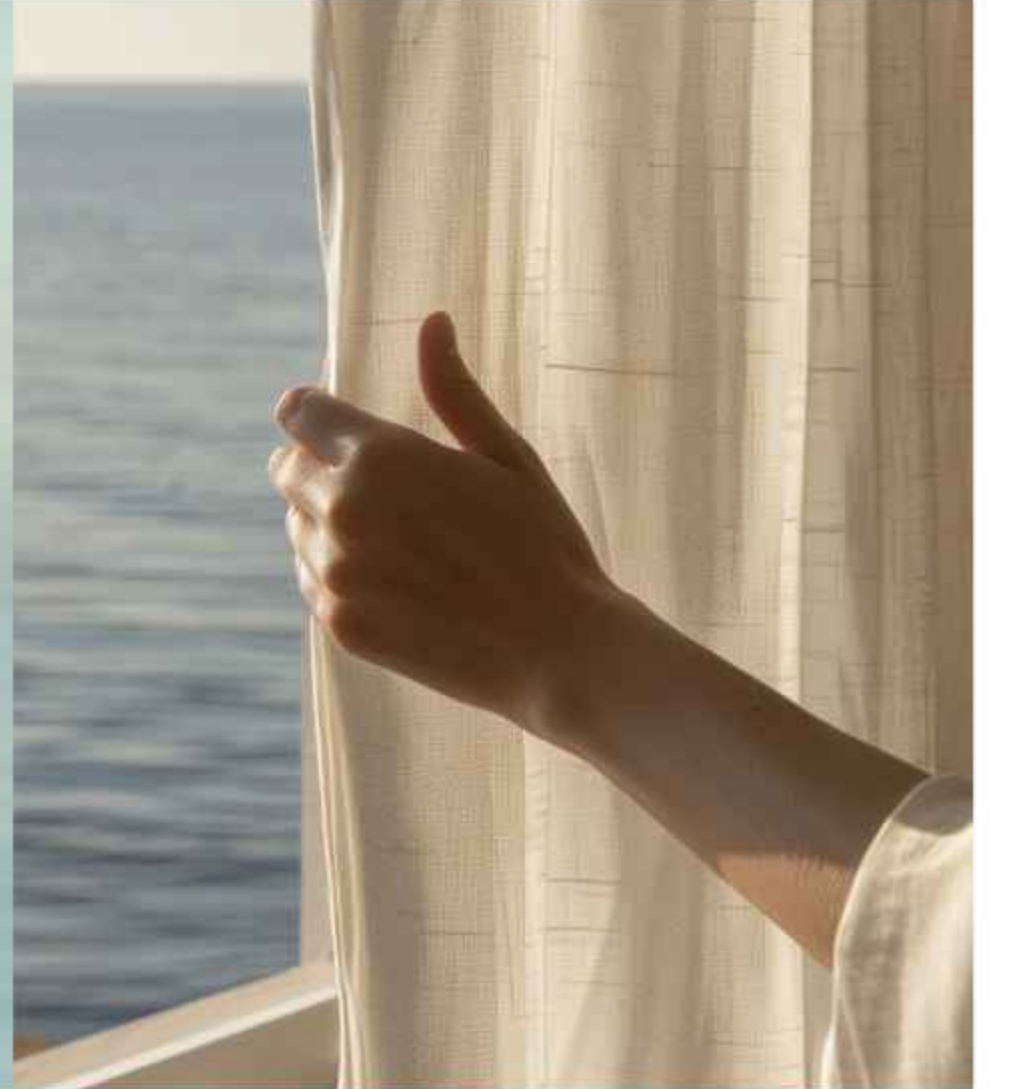
USPS OF EXTERIOR DESIGN



CONTEMPORARY  
Architecture  
Design



GREEN / LUSH  
Podium  
Level



EXCLUSIVE  
Crystal Beach



MARINA  
Beach



Units  
POSITION

Units are positioned  
at optimum angles to  
maximise the view to  
the water

BAY GROVE RESIDENCES

# Area GFA

**NO. OF FLOORS/STOREYS** G+7 to G+20

LENGTH OF BEACH: 500 m

	QUANTITY	SUITE SQM (NO BALCONY)	TOTAL SQM (WITH BALCONY)
1 Bedroom	108	73	82
2 Bedroom without Maid	60	104	127
2 Bedroom with Maid	88	125	165
3 Bedroom	36	173	215
4 Bedroom - Penthouses	4	256	335
<b>TOTAL APARTMENTS</b>	<b>296</b>		

## Parking offering

1 Bedroom	1 per unit
2 Bedroom	1 per unit
3 Bedroom	2 per unit
4 Bedroom - Duplex	3 per unit



# MY - View

THE INTERIORS

3-Bedroom Apartment Living







USPS OF INTERIOR DESIGN



Kitchen  
WITH BUILT-IN FIXTURES



Terraces  
OVERLOOKING THE BEACH AND  
PODIUM GARDEN



Units  
CONSIST OF ENSUITE TOILET



Apartment Kitchen





# MY - Lifestyle

THE AMENITIES



Adult pool

PROJECT LANDSCAPE DETAILS



KIDS'  
Pool



KIDS'  
Play Area



ADULT  
Pool



BEACH-LEVEL  
Snack Bar



PODIUM-LEVEL  
Gardens



# List of amenities



ADULT POOL



KIDS' POOL



KIDS' PLAY AREA



FITNESS CENTRE



Fitness Centre





DISCOVER MORE

[BAYGROVE.NAKHEEL.COM](http://BAYGROVE.NAKHEEL.COM)

800 NAKHEEL  
NAKHEEL.COM

This publication is for illustrative purposes only. Some of the images shown in the document were developed with computer graphics technology (photorealistic rendering), with reference to details of the façade and elevations, common areas, private areas and interiors of the apartments, for the sole purpose of presenting a plan for future realization and/or the various, potential solutions following user customization. All furniture and art are represented for marketing and rendering purposes only. For this reason, all information, descriptions and images are purely indicative and subject to change. This document has no contractual value and is not binding on the investment company that owns the rights and information reported. The reproduction and the partial use of texts and images is forbidden without prior authorization.





**BAYGROVE**  
RESIDENCES

DUBAI ISLANDS

**NAKHEEL**