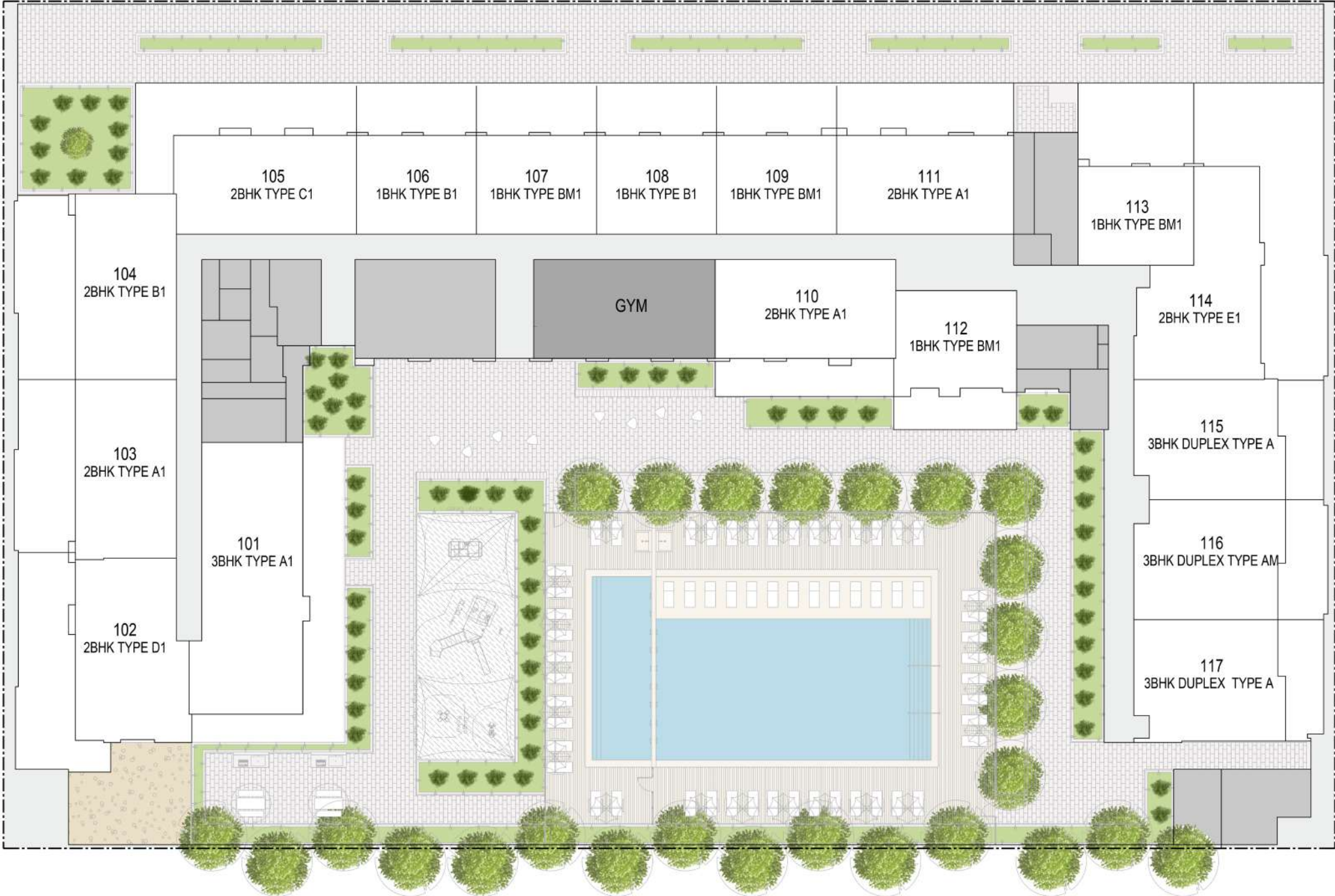


POOL & PARTIAL PARK VIEW

BOULEVARD

**TOWN SQUARE
PARK**

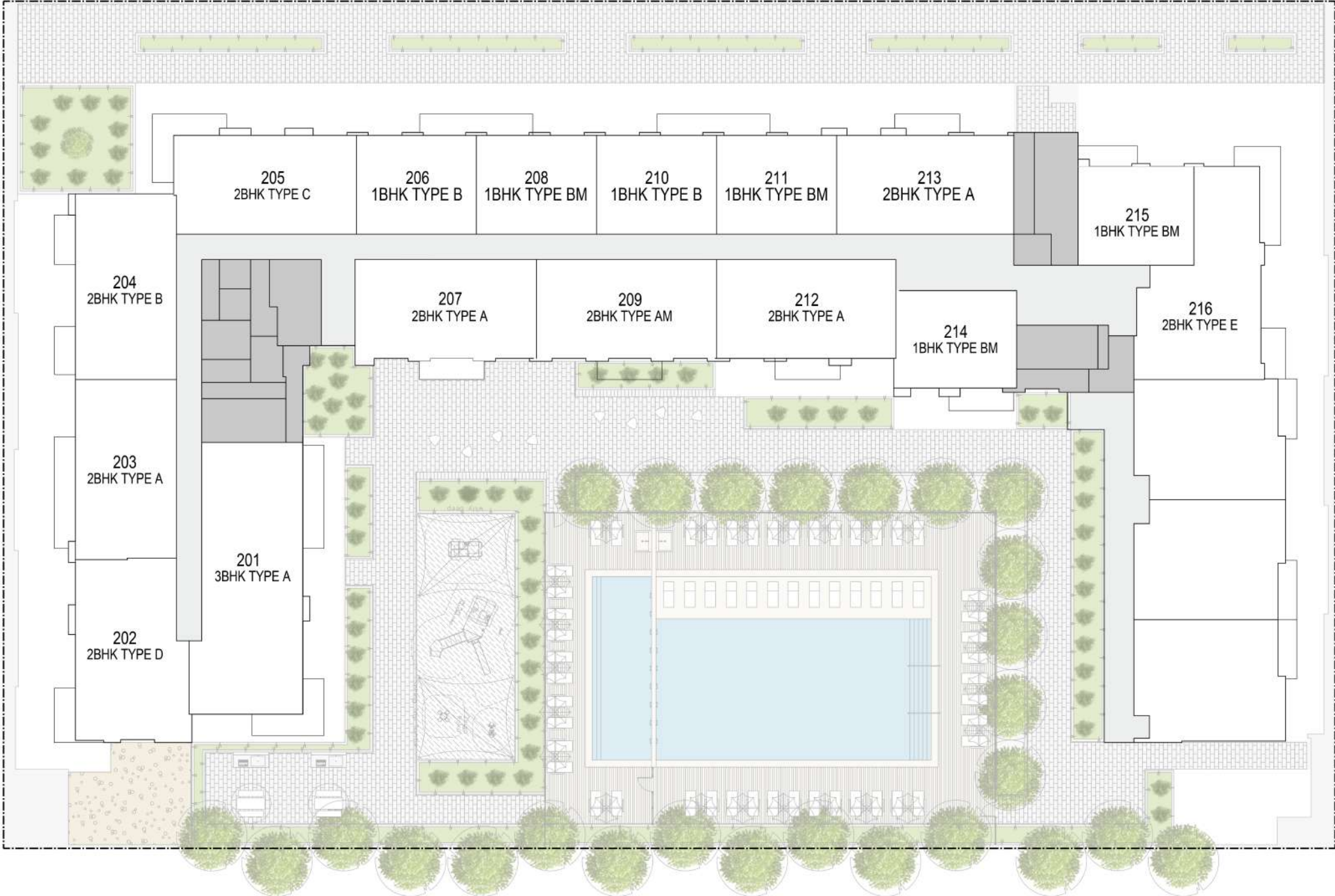


1ST FLOOR

POOL & PARTIAL PARK VIEW

BOULEVARD

**TOWN SQUARE
PARK**

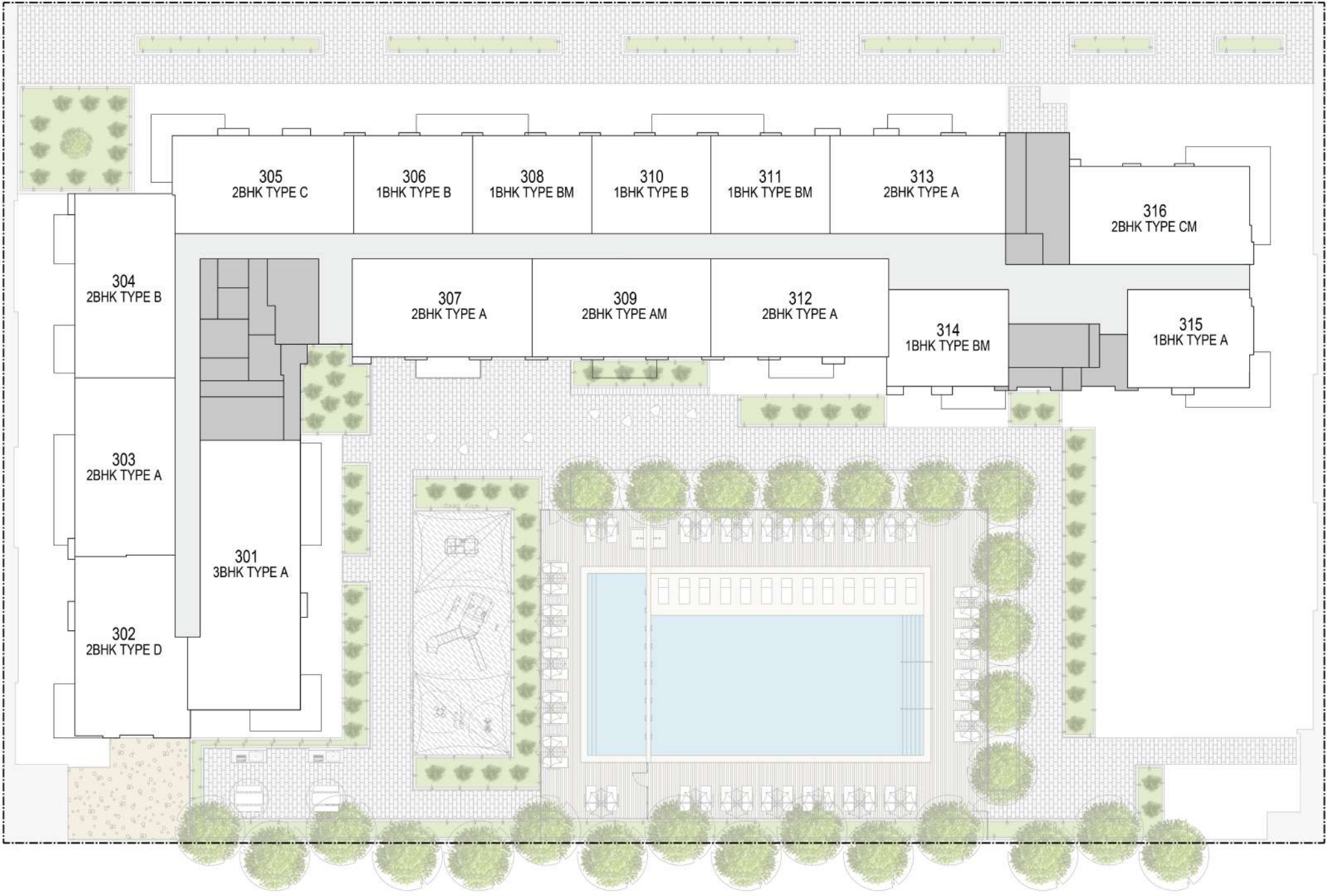


2ND FLOOR

POOL & PARTIAL PARK VIEW

BOULEVARD

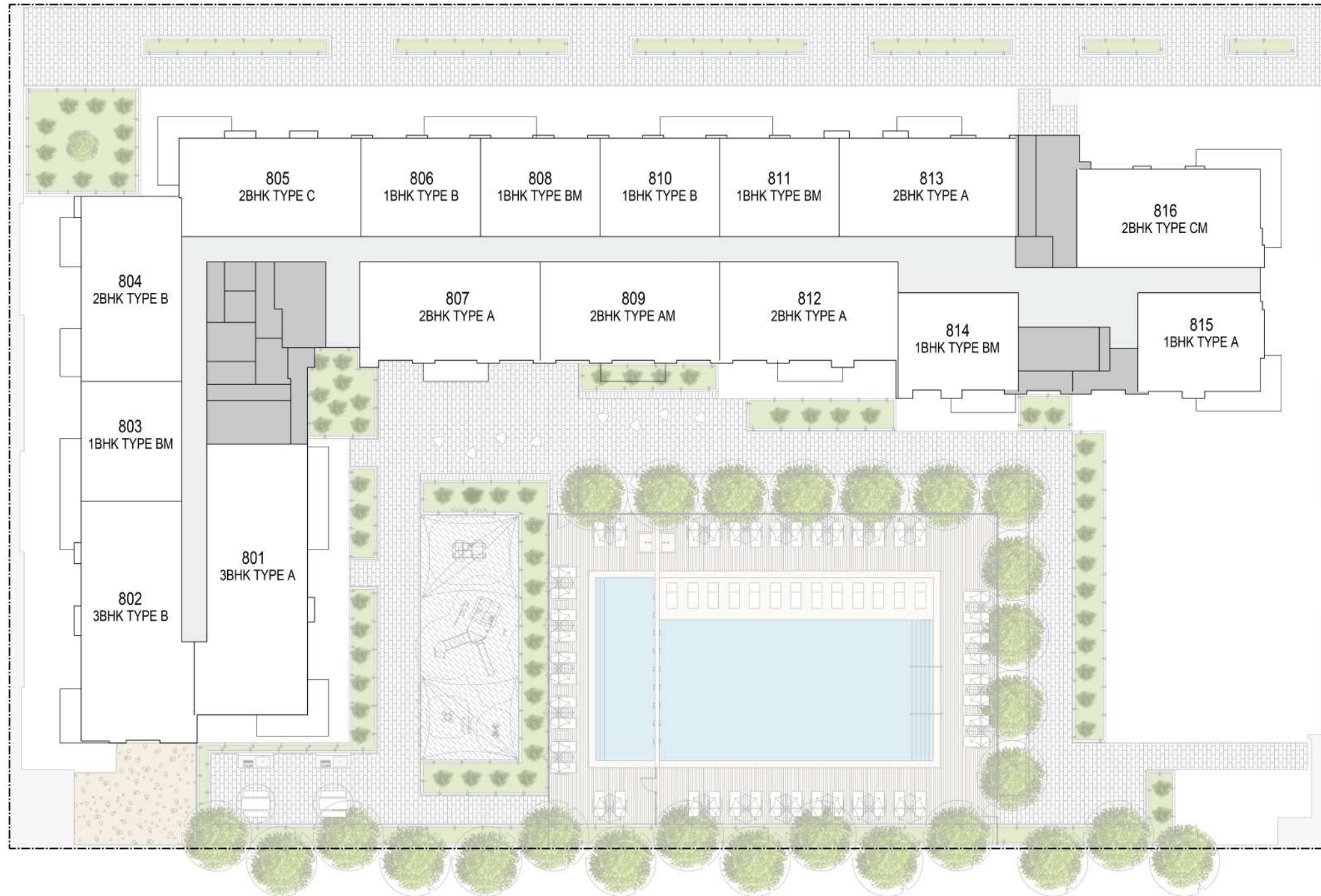
**TOWN SQUARE
PARK**



3RD TO 7TH FLOOR

POOL & PARTIAL PARK VIEW

BOULEVARD



TOWN SQUARE
PARK

8TH TO 12TH FLOOR