

MANGROVE

CREEK BEACH

FLOOR PLANS - BUILDING 1

EMAAR

MANGROVE

CREEK BEACH

BUILDING - 1

2 BEDROOM

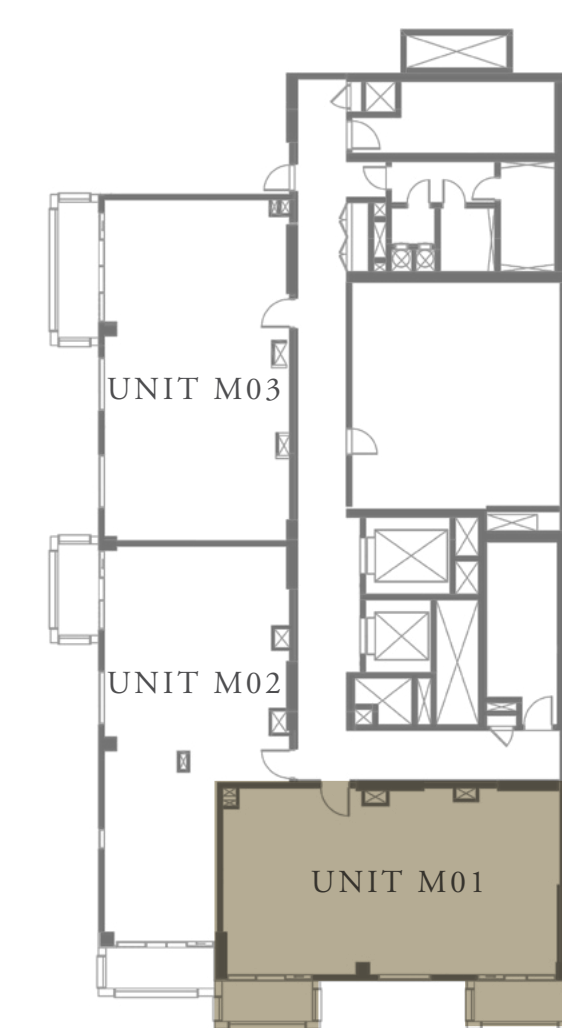
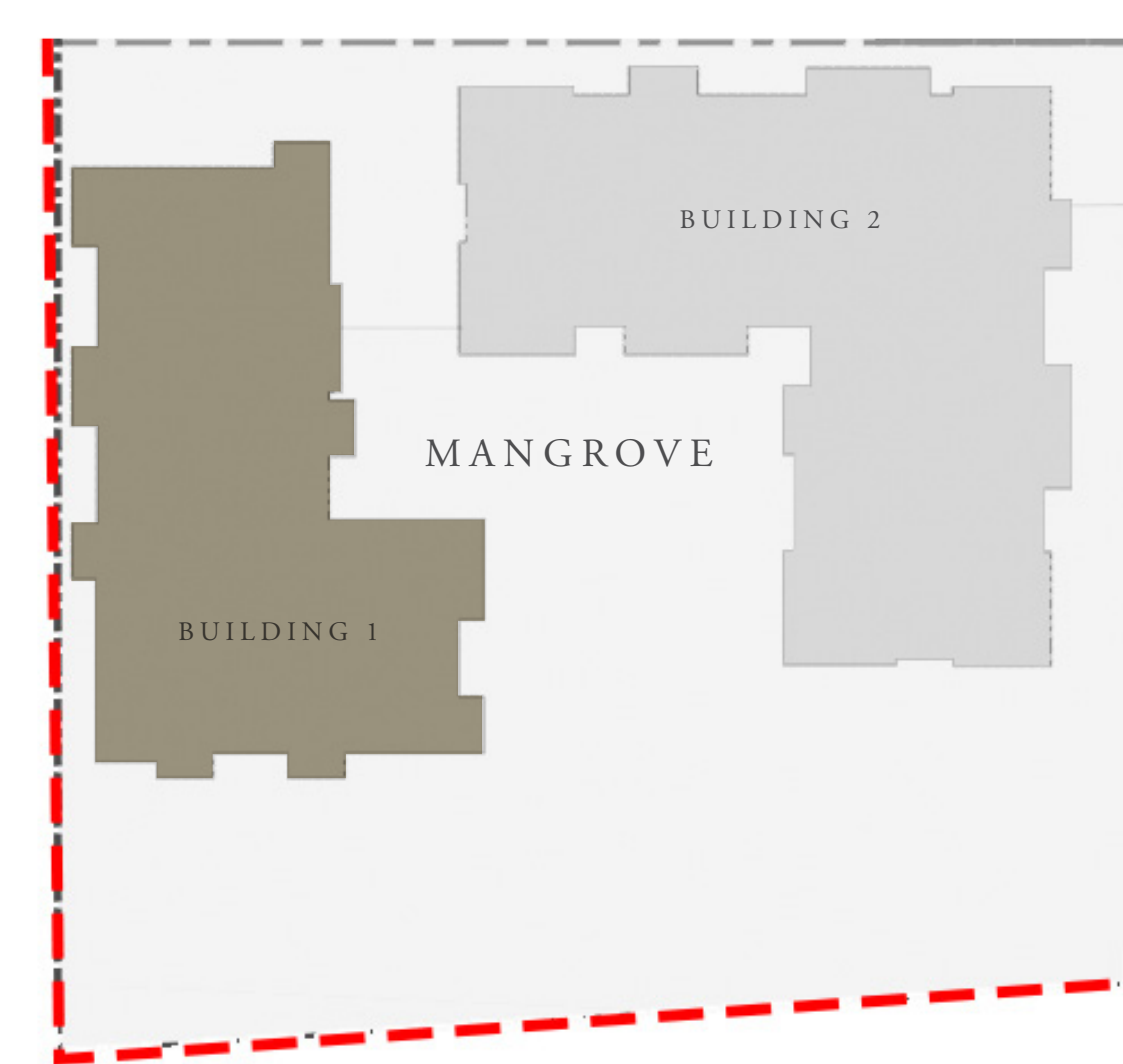
LEVEL MF UNIT M01

| | | |
|----------------|----------------|-------------|
| APARTMENT AREA | 929.25 SQ.FT. | 86.33 SQ.M. |
| BALCONY AREA | 126.69 SQ.FT. | 11.77 SQ.M. |
| TOTAL AREA | 1055.94 SQ.FT. | 98.10 SQ.M. |

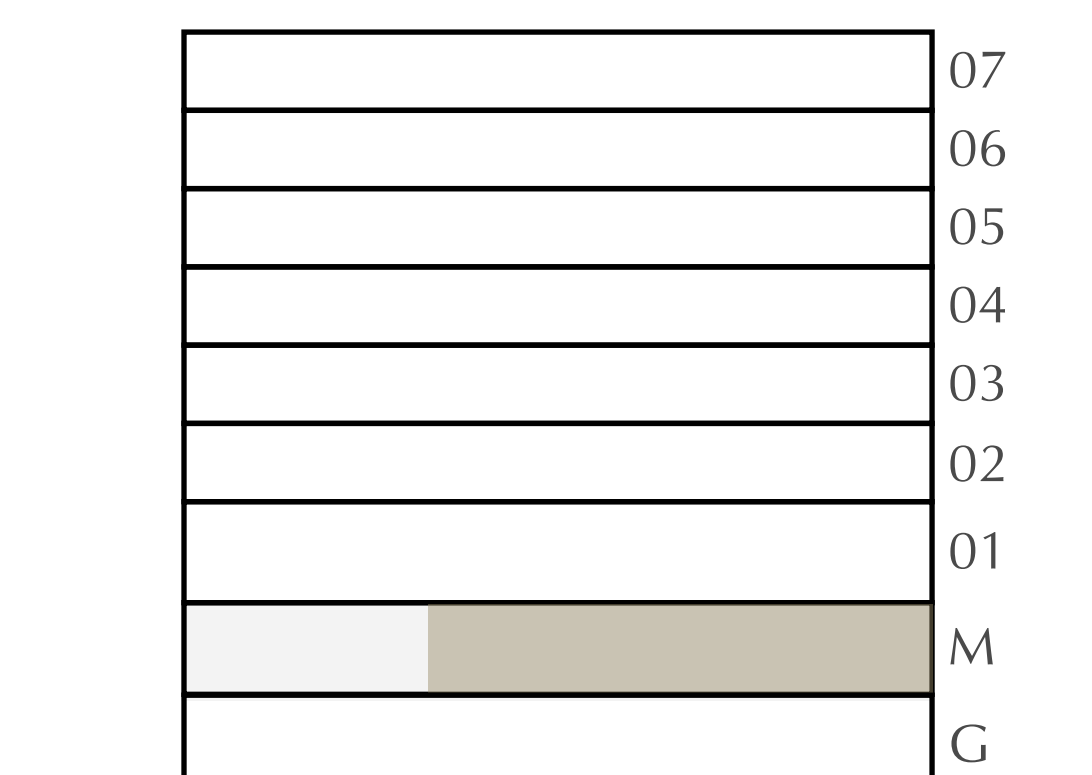


CANAL

PARK



KEY PLAN



FLOOR PLAN 1. All dimensions are in imperial and metric, and measured from finish to finish excluding construction tolerances. 2. All materials, dimensions, and drawings are approximate only. 3. Information is subject to change without notice, at developer's absolute discretion. 4. Actual area may vary from the stated area. 5. Drawings not to scale. 6. All images used are for illustrative purposes only and do not represent the actual size, features, specifications, fittings, and furnishings. 7. The developer reserves the right to make revisions / alterations, at it's absolute discretion, without any liability whatsoever.

MANGROVE

CREEK BEACH

BUILDING - 1

2 BEDROOM

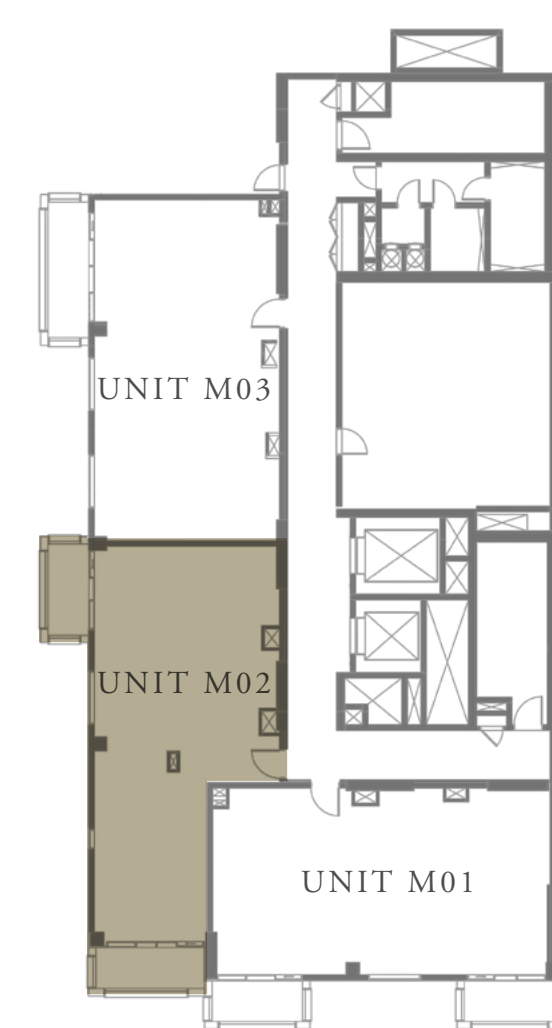
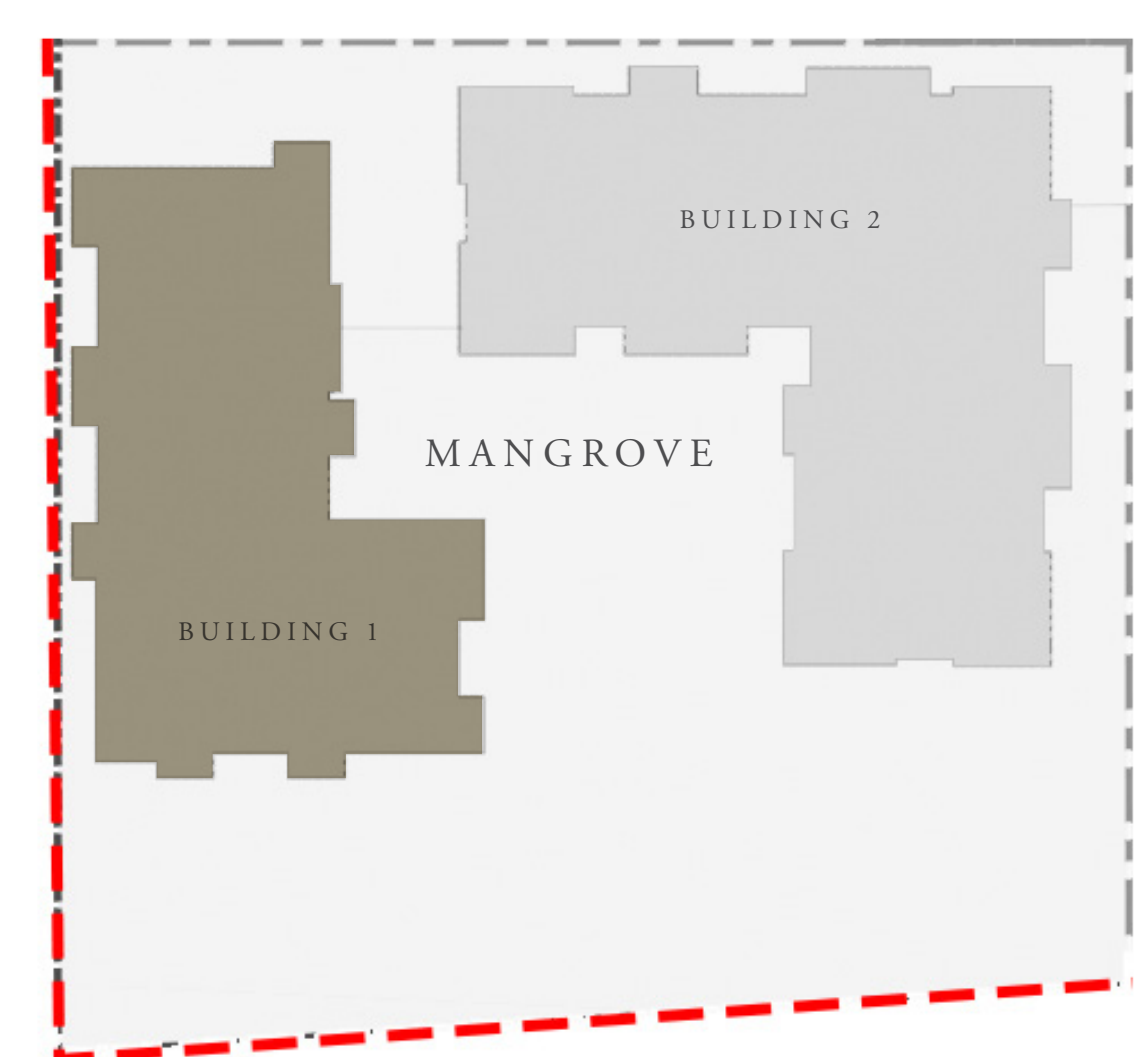
LEVEL MF

UNIT M02

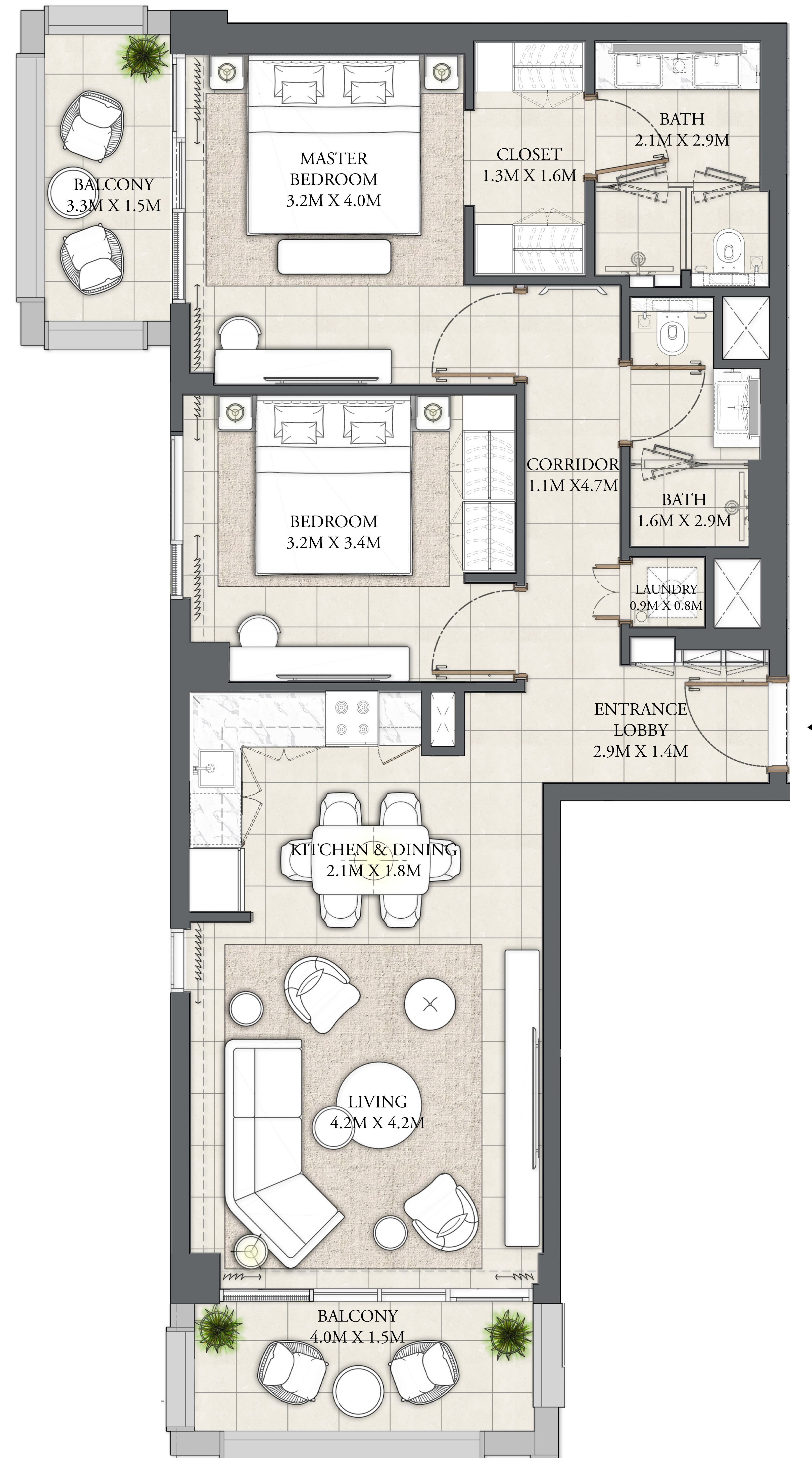
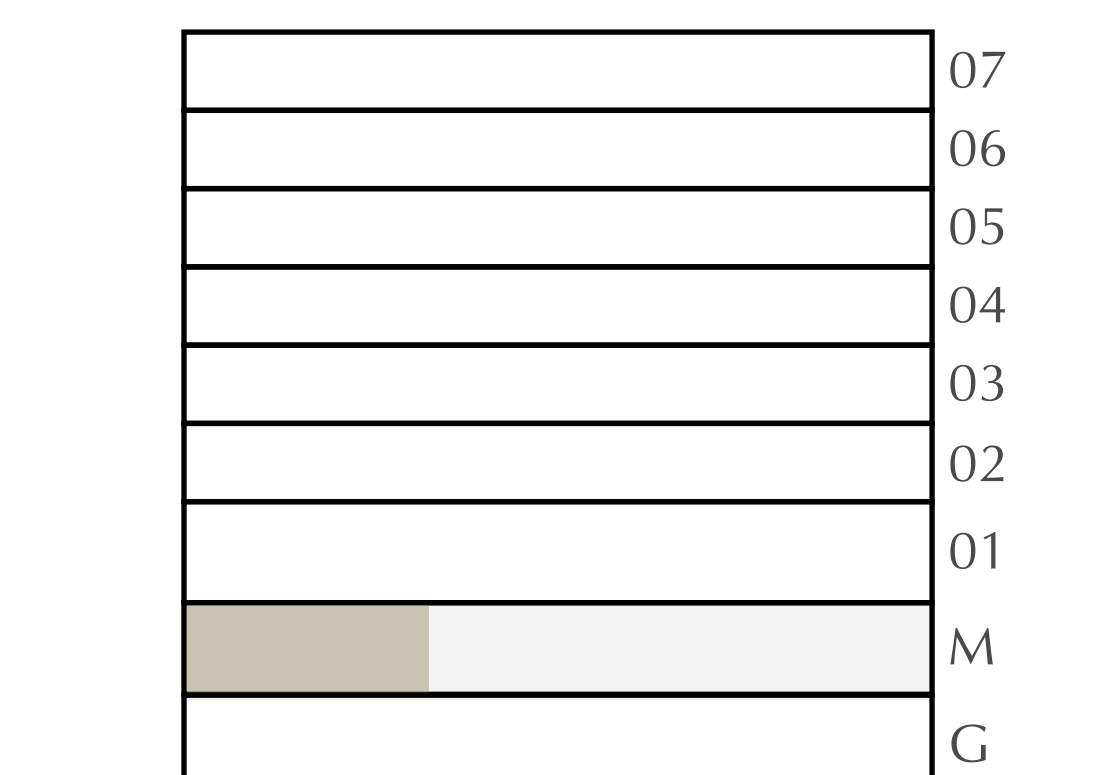
| | | |
|----------------|----------------|-------------|
| APARTMENT AREA | 917.73 SQ.FT. | 85.26 SQ.M. |
| BALCONY AREA | 141.55 SQ.FT. | 13.15 SQ.M. |
| TOTAL AREA | 1059.28 SQ.FT. | 98.41 SQ.M. |

CANAL

PARK



KEY PLAN



FLOOR PLAN 1. All dimensions are in imperial and metric, and measured from finish to finish excluding construction tolerances. 2. All materials, dimensions, and drawings are approximate only. 3. Information is subject to change without notice, at developer's absolute discretion. 4. Actual area may vary from the stated area. 5. Drawings not to scale. 6. All images used are for illustrative purposes only and do not represent the actual size, features, specifications, fittings, and furnishings. 7. The developer reserves the right to make revisions / alterations, at it's absolute discretion, without any liability whatsoever.

MANGROVE

CREEK BEACH

BUILDING - 1

2 BEDROOM

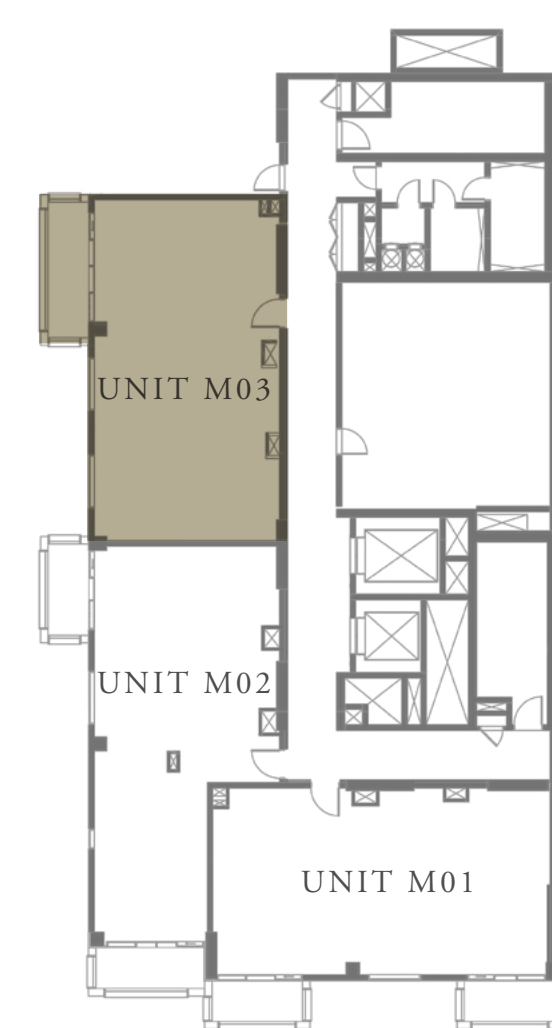
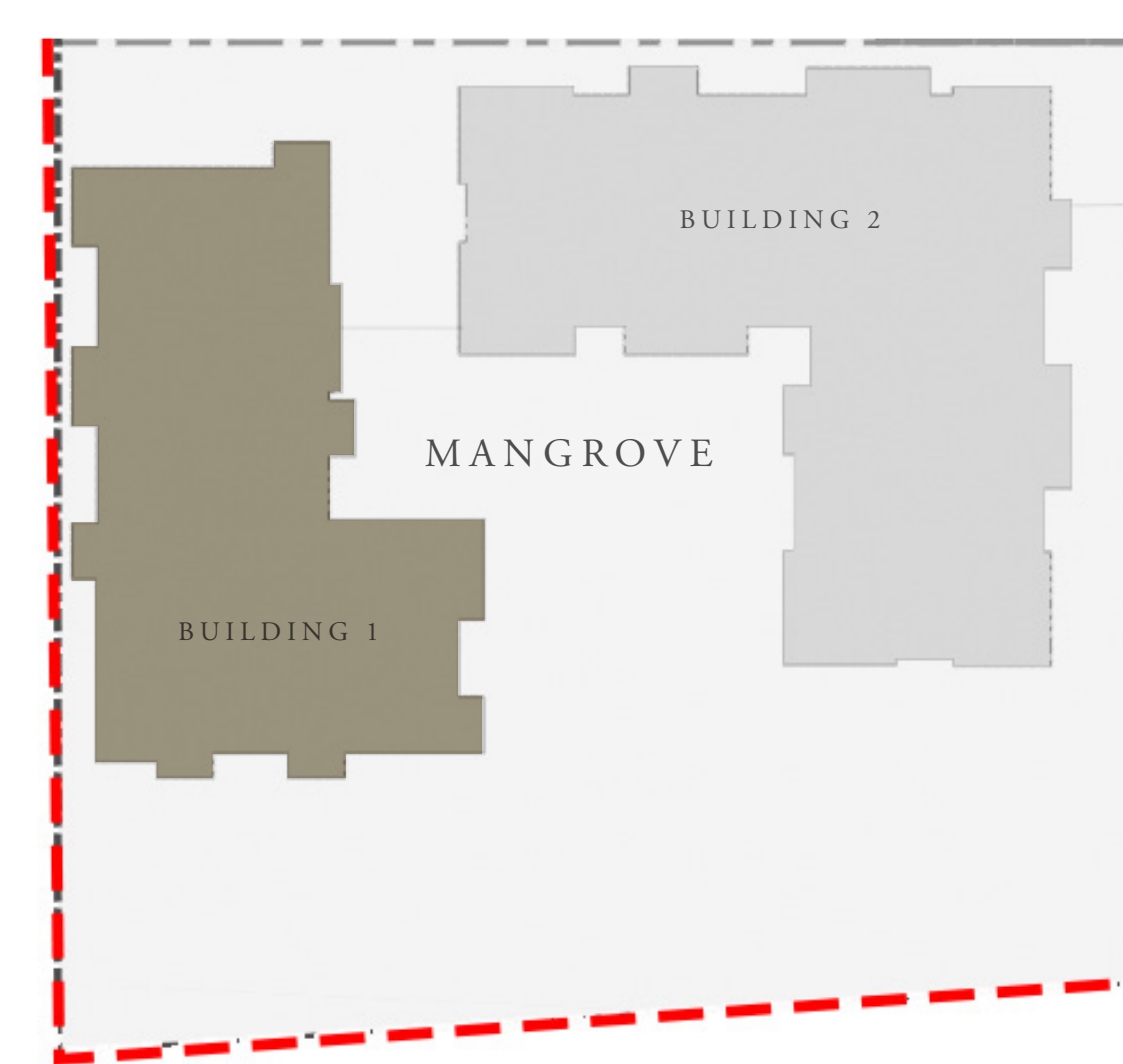
LEVEL MF

UNIT M03

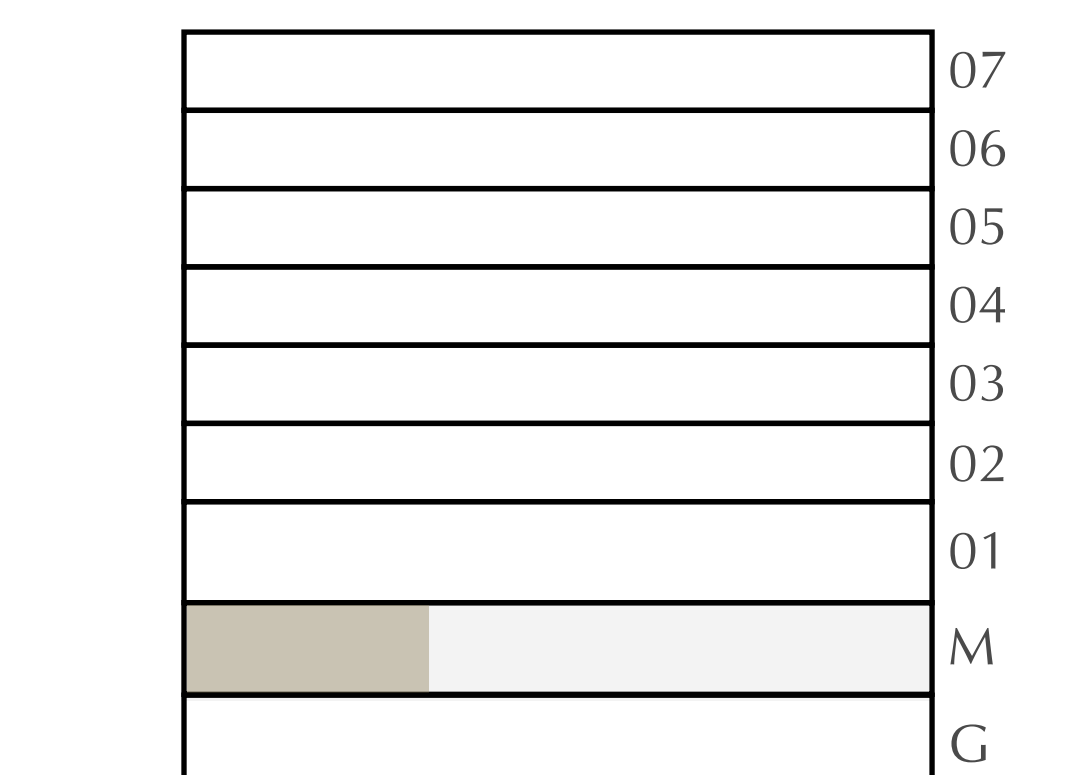
| | | |
|----------------|----------------|-------------|
| APARTMENT AREA | 932.69 SQ.FT. | 86.65 SQ.M. |
| BALCONY AREA | 92.57 SQ.FT. | 8.60 SQ.M. |
| TOTAL AREA | 1025.26 SQ.FT. | 95.25 SQ.M. |

CANAL

PARK



KEY PLAN



FLOOR PLAN 1. All dimensions are in imperial and metric, and measured from finish to finish excluding construction tolerances. 2. All materials, dimensions, and drawings are approximate only. 3. Information is subject to change without notice, at developer's absolute discretion. 4. Actual area may vary from the stated area. 5. Drawings not to scale. 6. All images used are for illustrative purposes only and do not represent the actual size, features, specifications, fittings, and furnishings. 7. The developer reserves the right to make revisions / alterations, at its absolute discretion, without any liability whatsoever.

MANGROVE

CREEK BEACH

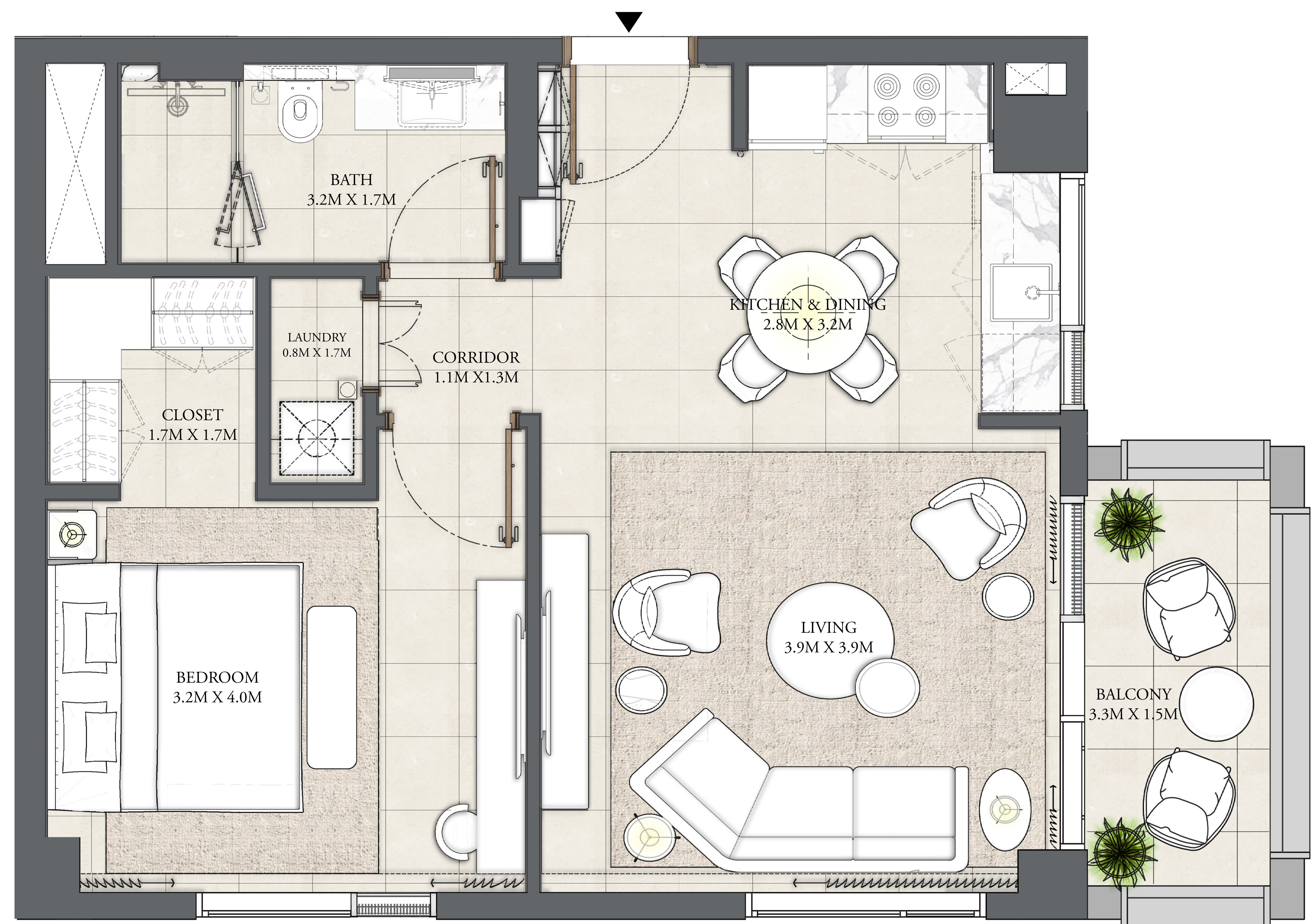
BUILDING - 1

1 BEDROOM

LEVEL 1

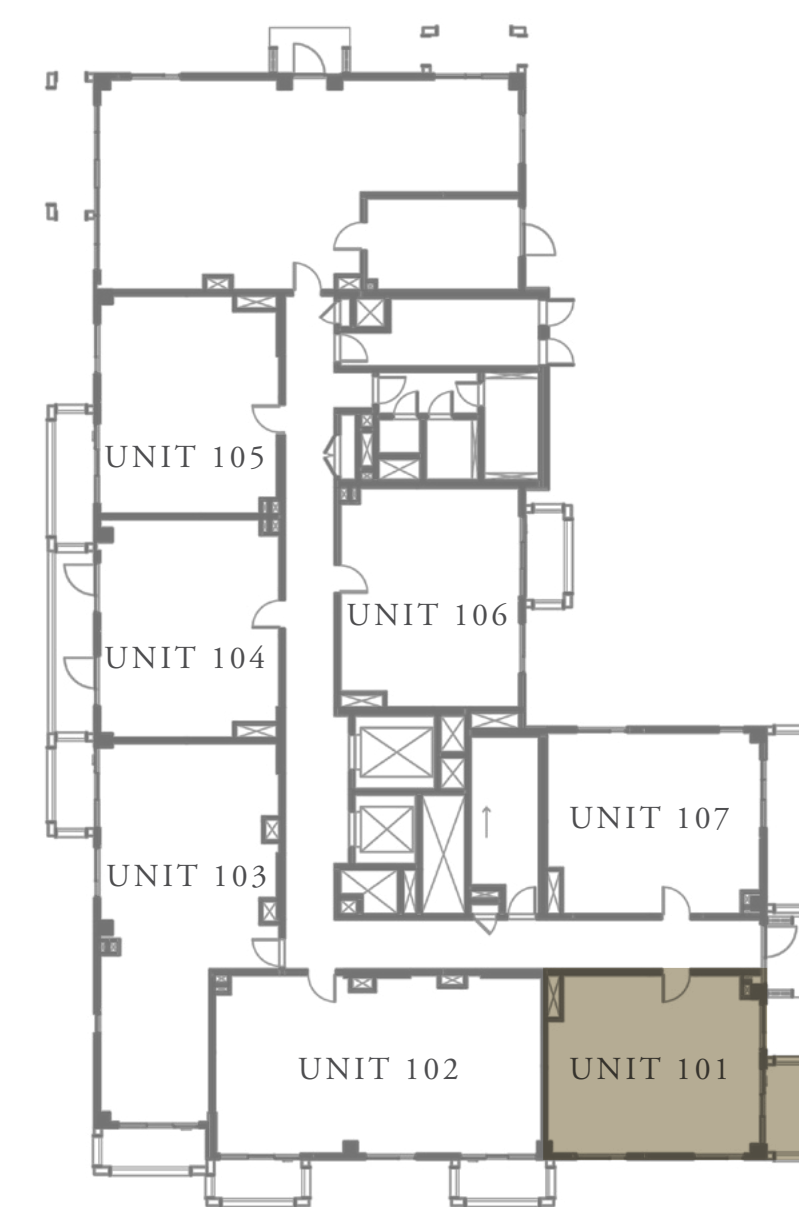
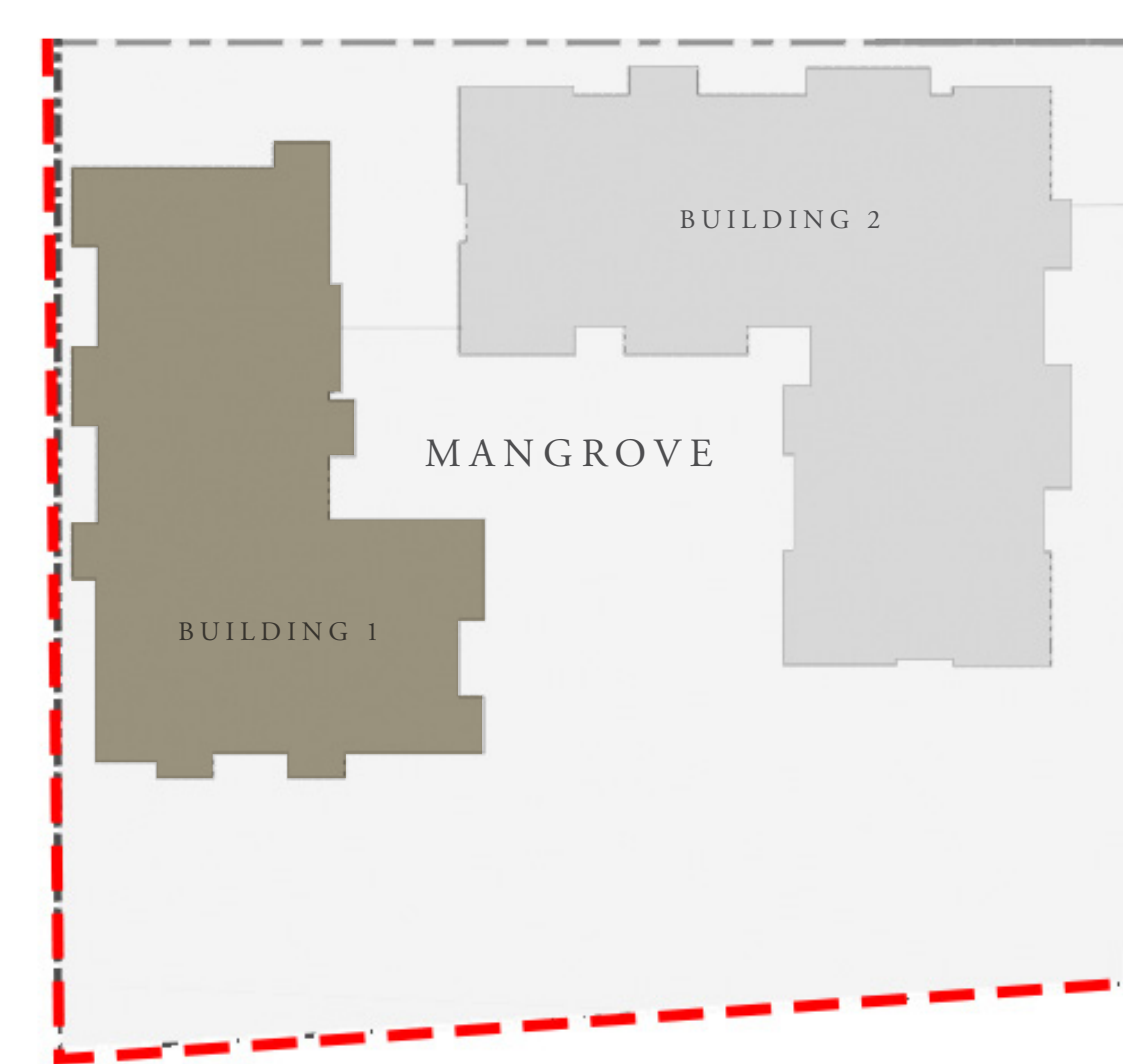
UNIT 101

| | | |
|----------------|---------------|-------------|
| APARTMENT AREA | 609.56 SQ.FT. | 56.63 SQ.M. |
| BALCONY AREA | 63.51 SQ.FT. | 5.90 .M. |
| TOTAL AREA | 673.07 SQ.FT. | 62.53 SQ.M. |

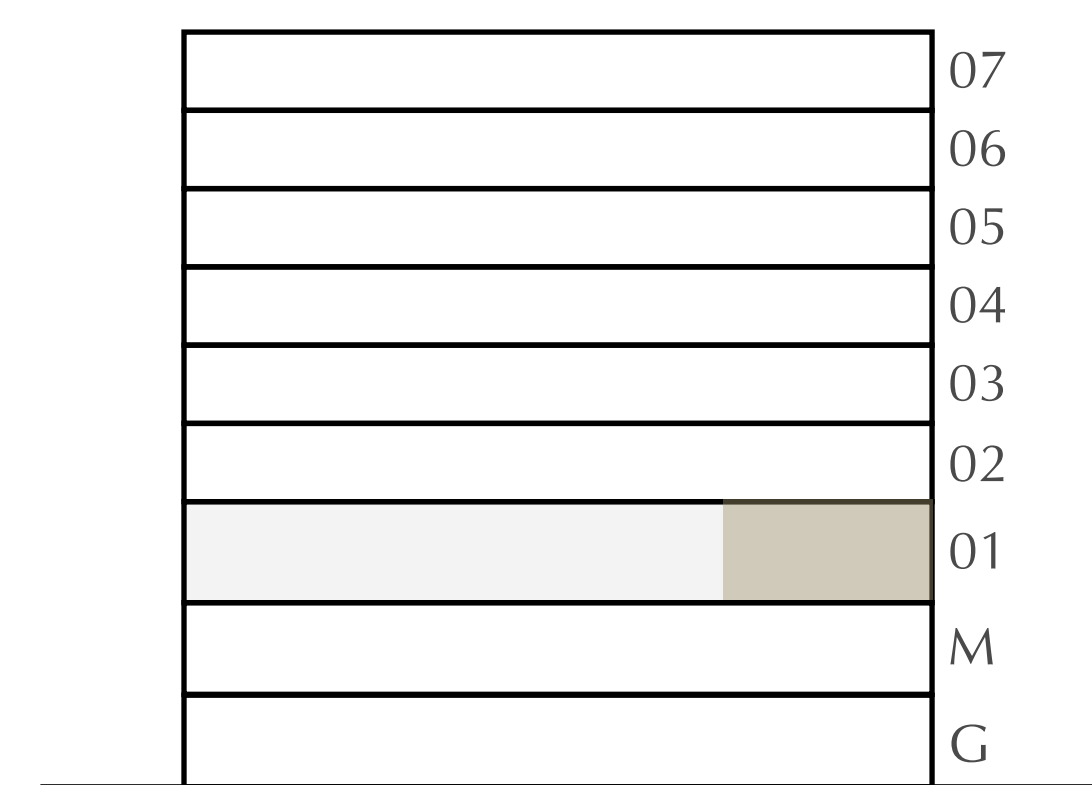


CANAL

PARK



KEY PLAN



FLOOR PLAN 1. All dimensions are in imperial and metric, and measured from finish to finish excluding construction tolerances. 2. All materials, dimensions, and drawings are approximate only. 3. Information is subject to change without notice, at developer's absolute discretion. 4. Actual area may vary from the stated area. 5. Drawings not to scale. 6. All images used are for illustrative purposes only and do not represent the actual size, features, specifications, fittings, and furnishings. 7. The developer reserves the right to make revisions / alterations, at it's absolute discretion, without any liability whatsoever.

MANGROVE

CREEK BEACH

BUILDING - 1

2 BEDROOM

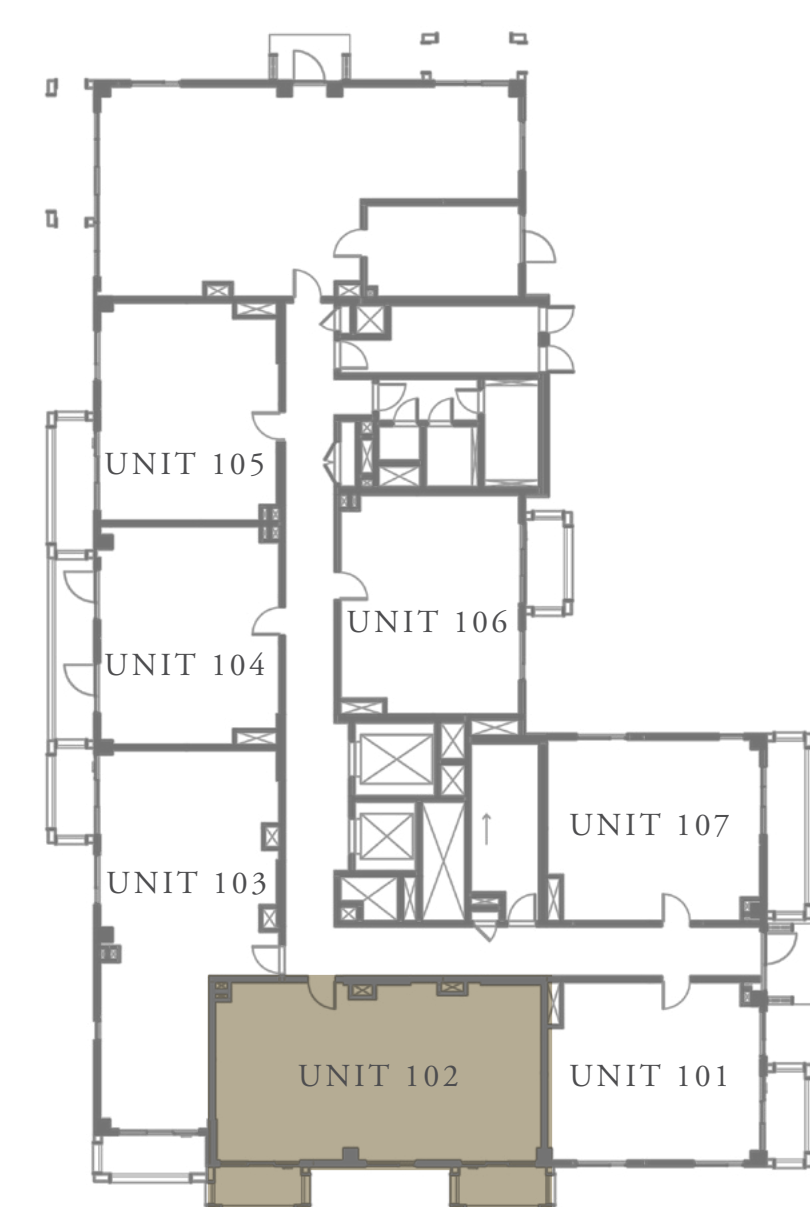
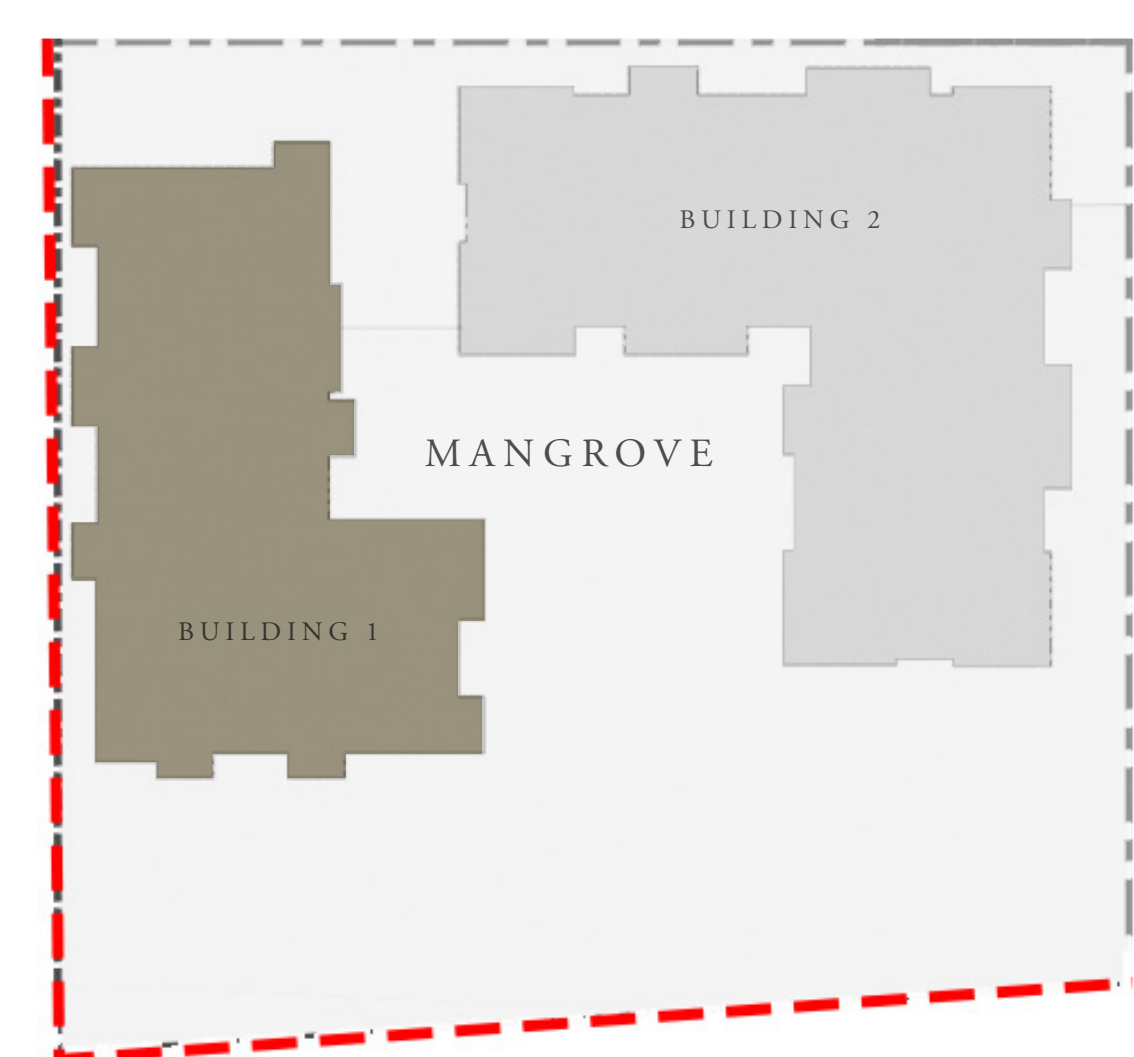
LEVEL 1 UNIT 102

| | | |
|----------------|----------------|-------------|
| APARTMENT AREA | 929.25 SQ.FT. | 86.33 SQ.M. |
| BALCONY AREA | 126.80 SQ.FT. | 11.78 SQ.M. |
| TOTAL AREA | 1056.05 SQ.FT. | 98.11 SQ.M. |

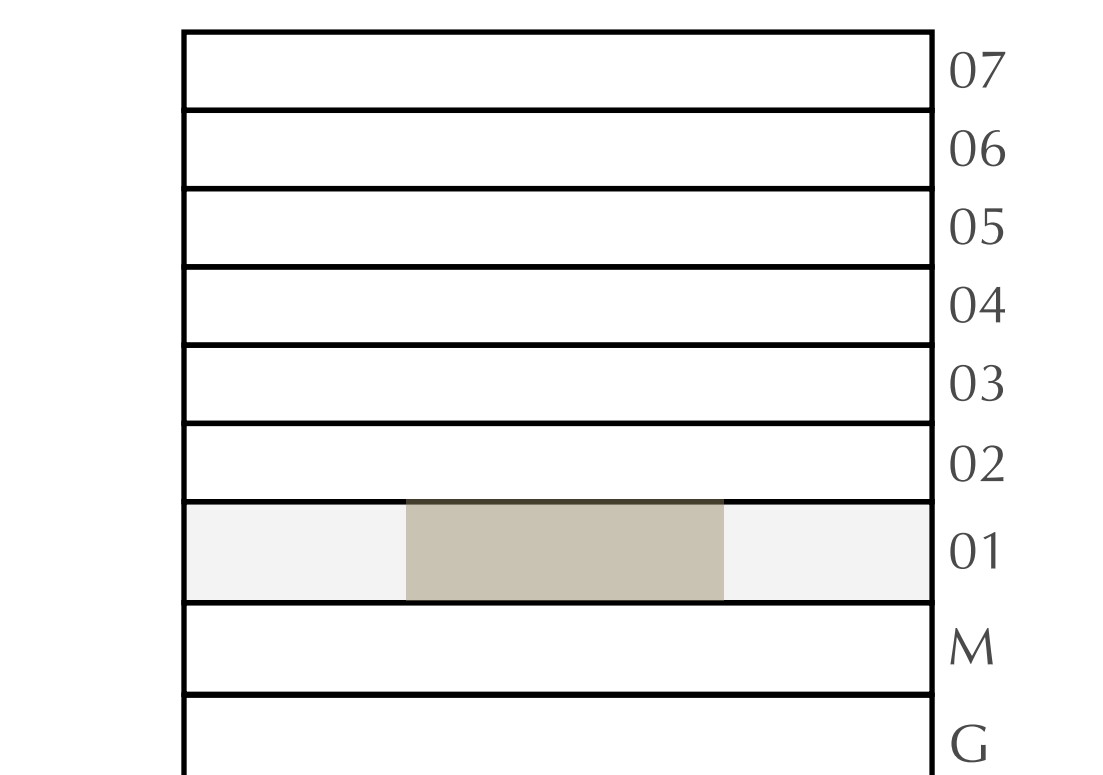


CANAL

PARK



KEY PLAN



FLOOR PLAN 1. All dimensions are in imperial and metric, and measured from finish to finish excluding construction tolerances. 2. All materials, dimensions, and drawings are approximate only. 3. Information is subject to change without notice, at developer's absolute discretion. 4. Actual area may vary from the stated area. 5. Drawings not to scale. 6. All images used are for illustrative purposes only and do not represent the actual size, features, specifications, fittings, and furnishings. 7. The developer reserves the right to make revisions / alterations, at its absolute discretion, without any liability whatsoever.

MANGROVE

CREEK BEACH

BUILDING - 1

2 BEDROOM

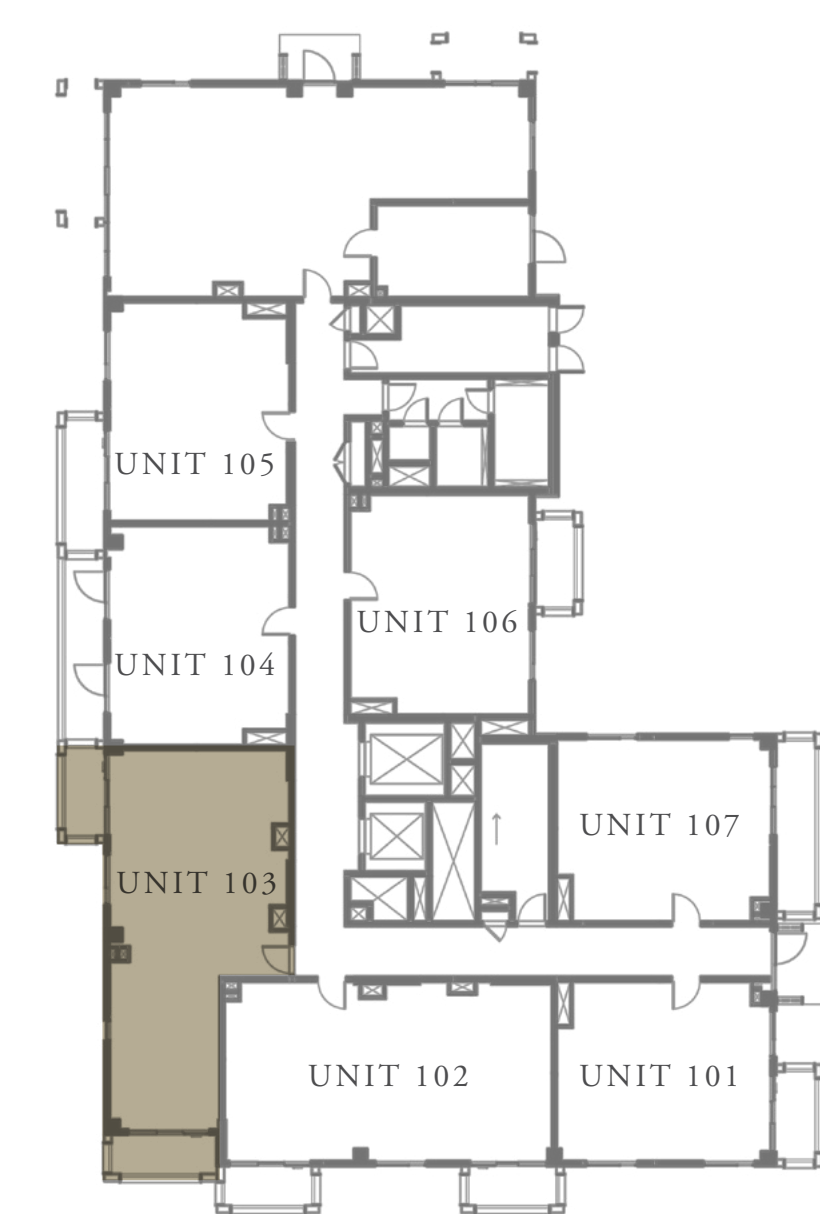
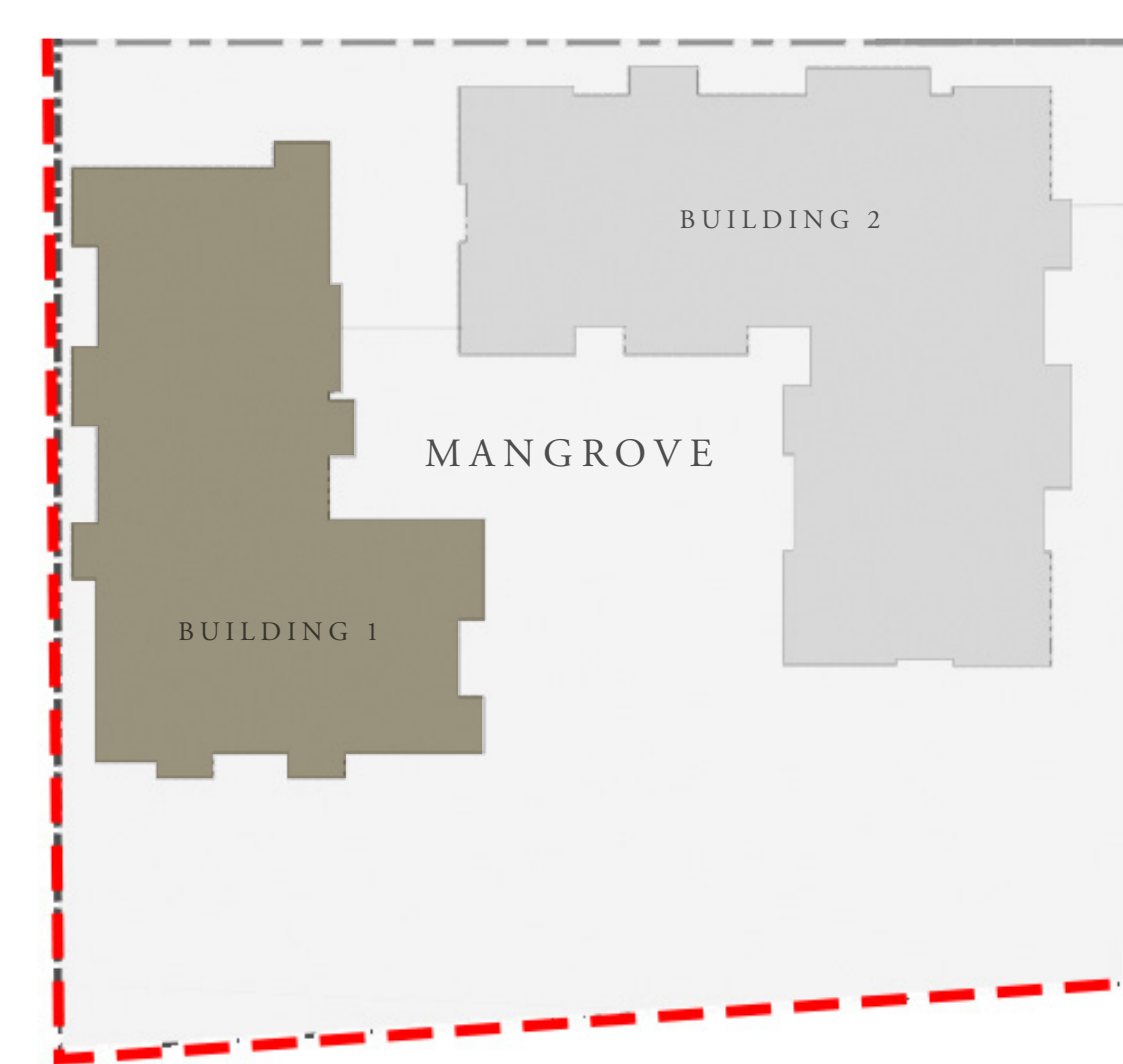
LEVEL 1

UNIT 103

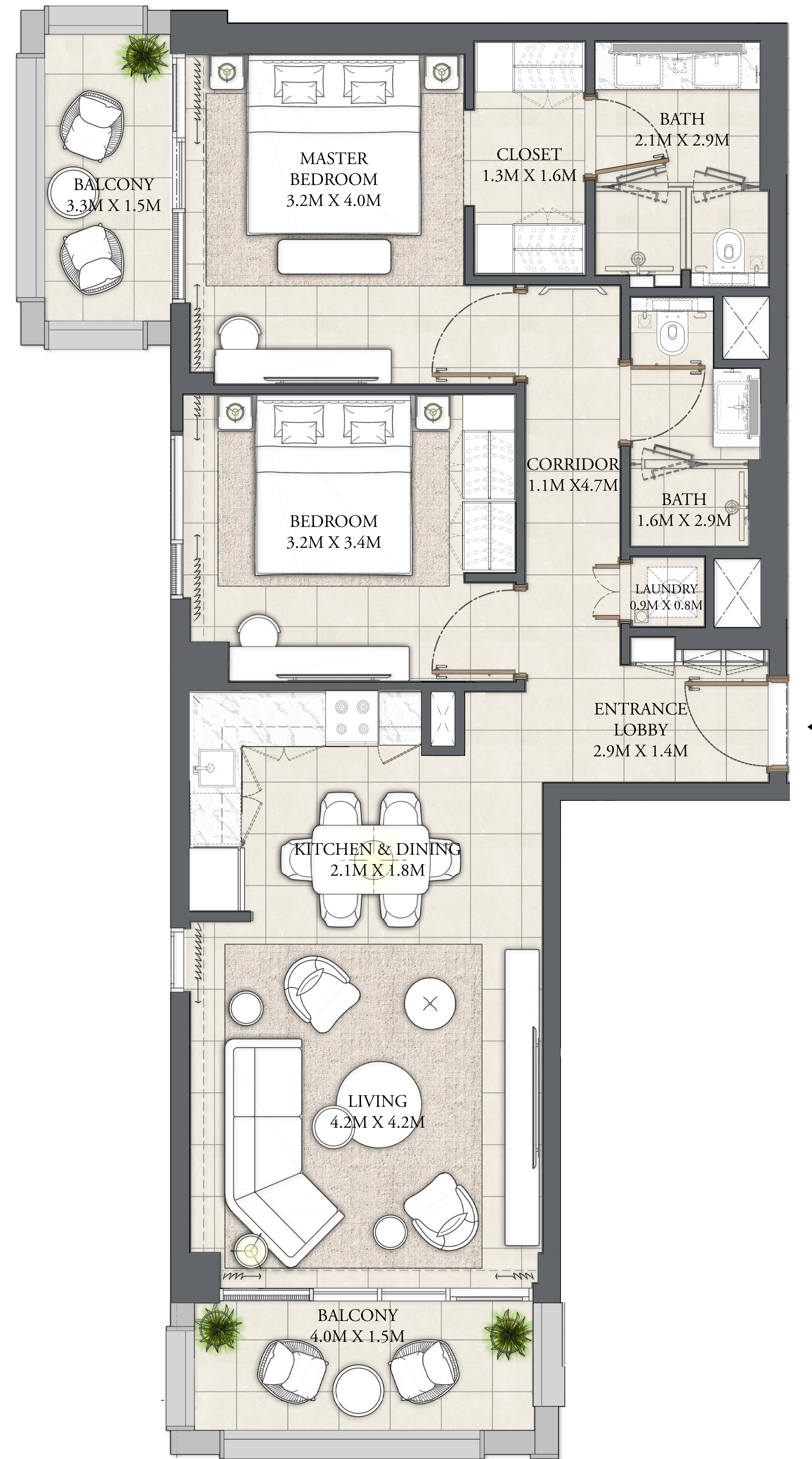
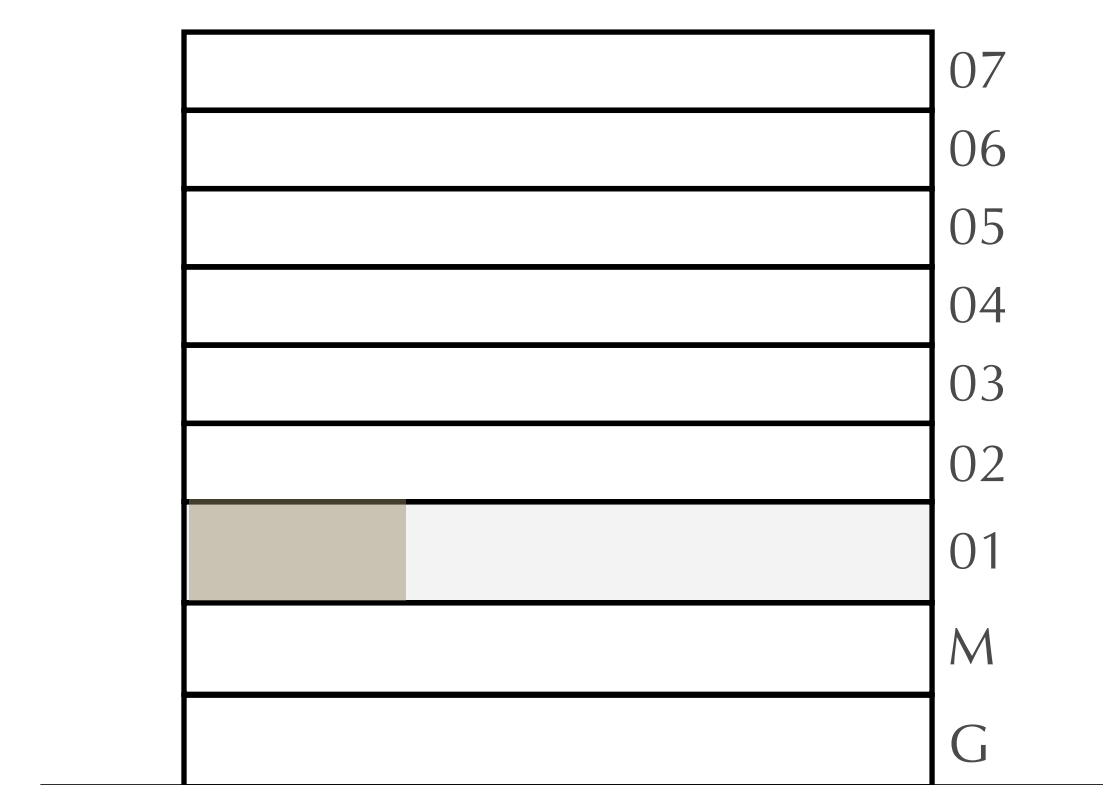
| | | |
|----------------|----------------|-------------|
| APARTMENT AREA | 917.52 SQ.FT. | 85.24 SQ.M. |
| BALCONY AREA | 141.87 SQ.FT. | 13.18 SQ.M. |
| TOTAL AREA | 1059.39 SQ.FT. | 98.42 SQ.M. |

CANAL

PARK



KEY PLAN



FLOOR PLAN 1. All dimensions are in imperial and metric, and measured from finish to finish excluding construction tolerances. 2. All materials, dimensions, and drawings are approximate only. 3. Information is subject to change without notice, at developer's absolute discretion. 4. Actual area may vary from the stated area. 5. Drawings not to scale. 6. All images used are for illustrative purposes only and do not represent the actual size, features, specifications, fittings, and furnishings. 7. The developer reserves the right to make revisions / alterations, at its absolute discretion, without any liability whatsoever.

MANGROVE

CREEK BEACH

BUILDING - 1

1 BEDROOM

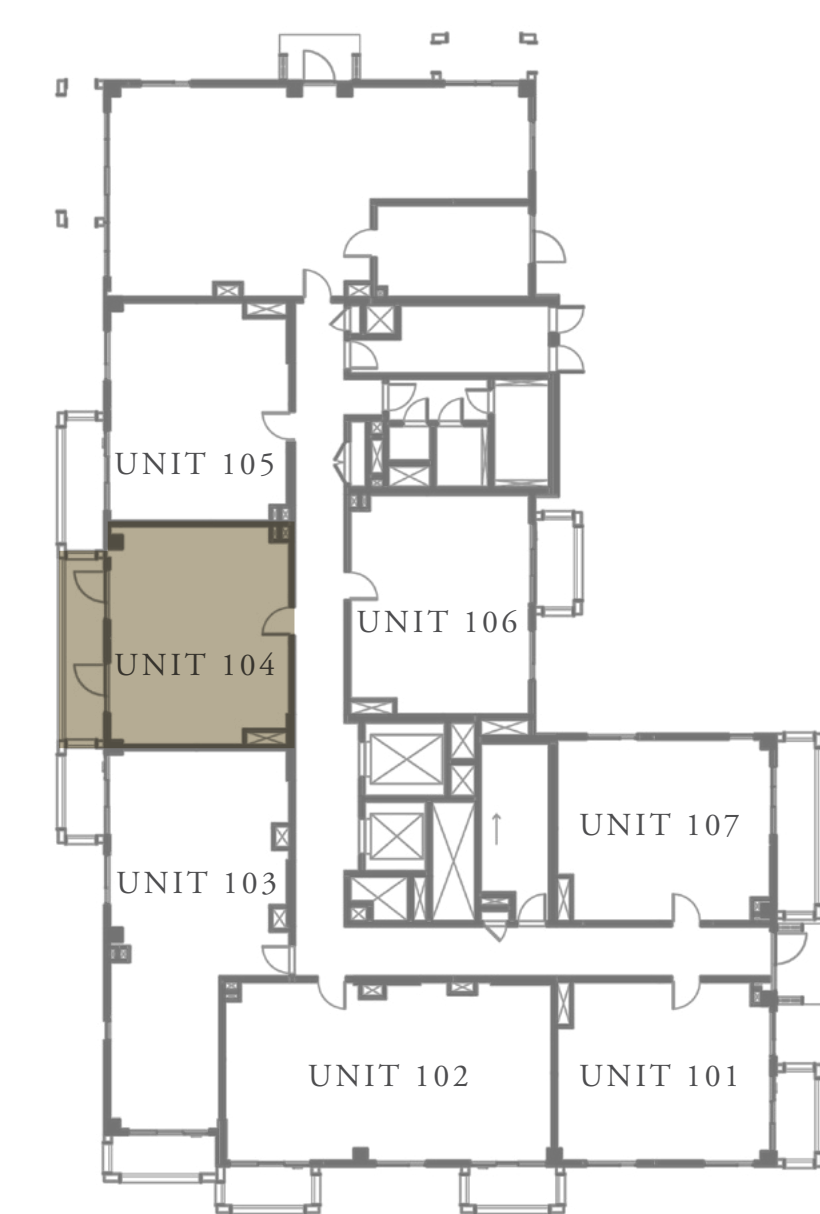
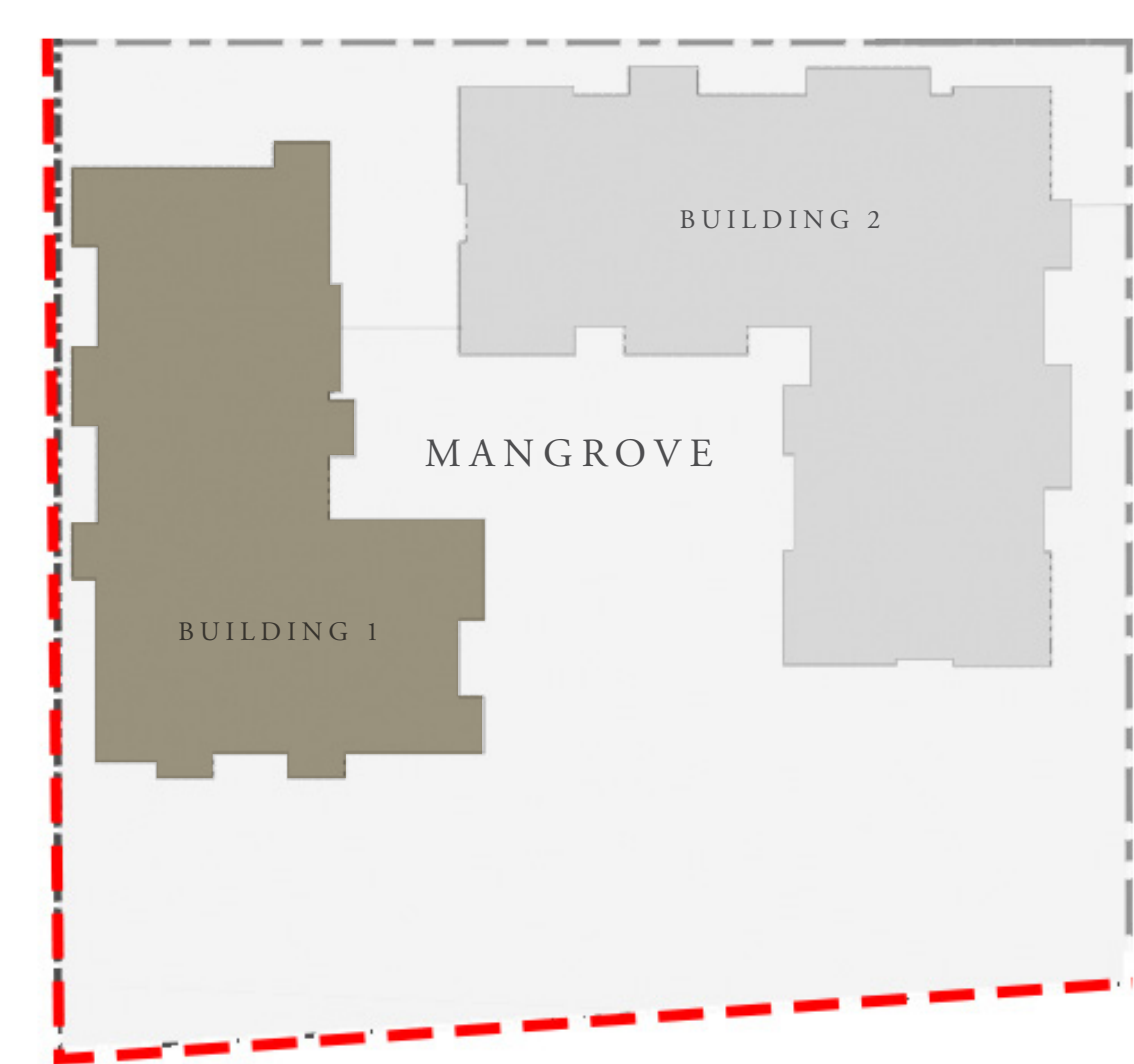
LEVEL 1

UNIT 104

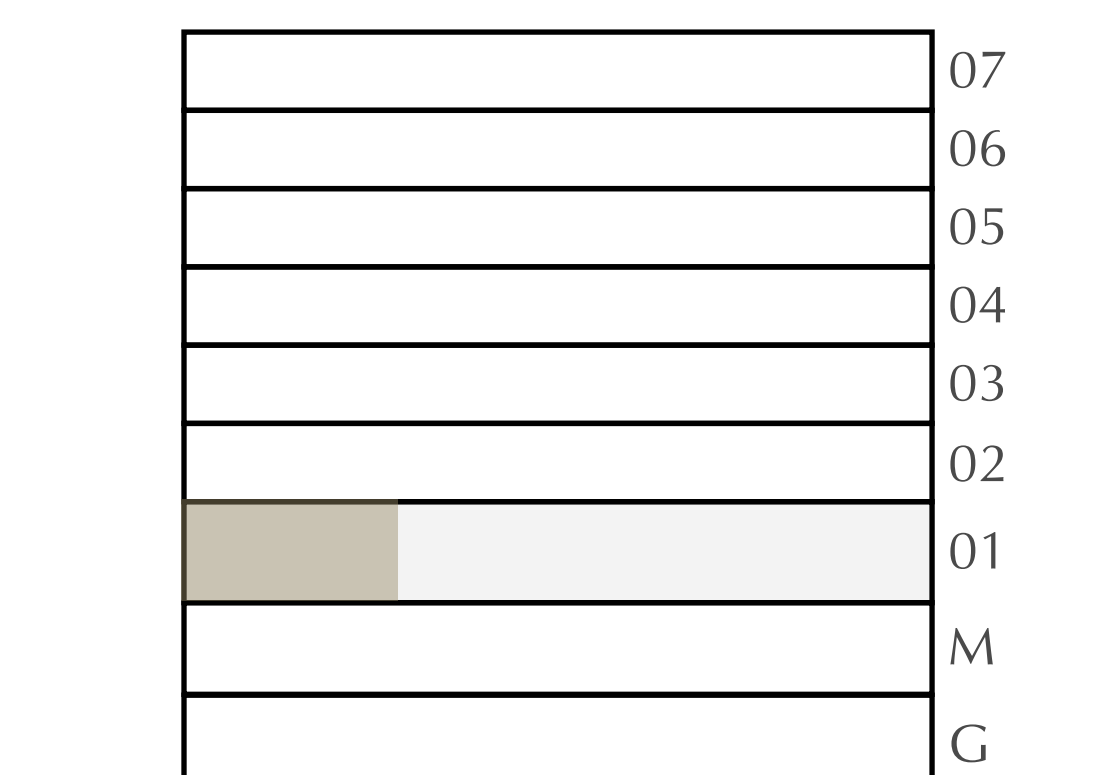
| | | |
|----------------|---------------|-------------|
| APARTMENT AREA | 628.40 SQ.FT. | 58.38 SQ.M. |
| BALCONY AREA | 127.66 SQ.FT. | 11.86 SQ.M. |
| TOTAL AREA | 756.06 SQ.FT. | 70.24 SQ.M. |

CANAL

PARK



KEY PLAN



FLOOR PLAN 1. All dimensions are in imperial and metric, and measured from finish to finish excluding construction tolerances. 2. All materials, dimensions, and drawings are approximate only. 3. Information is subject to change without notice, at developer's absolute discretion. 4. Actual area may vary from the stated area. 5. Drawings not to scale. 6. All images used are for illustrative purposes only and do not represent the actual size, features, specifications, fittings, and furnishings. 7. The developer reserves the right to make revisions / alterations, at it's absolute discretion, without any liability whatsoever.

MANGROVE

CREEK BEACH

BUILDING - 1

1 BEDROOM

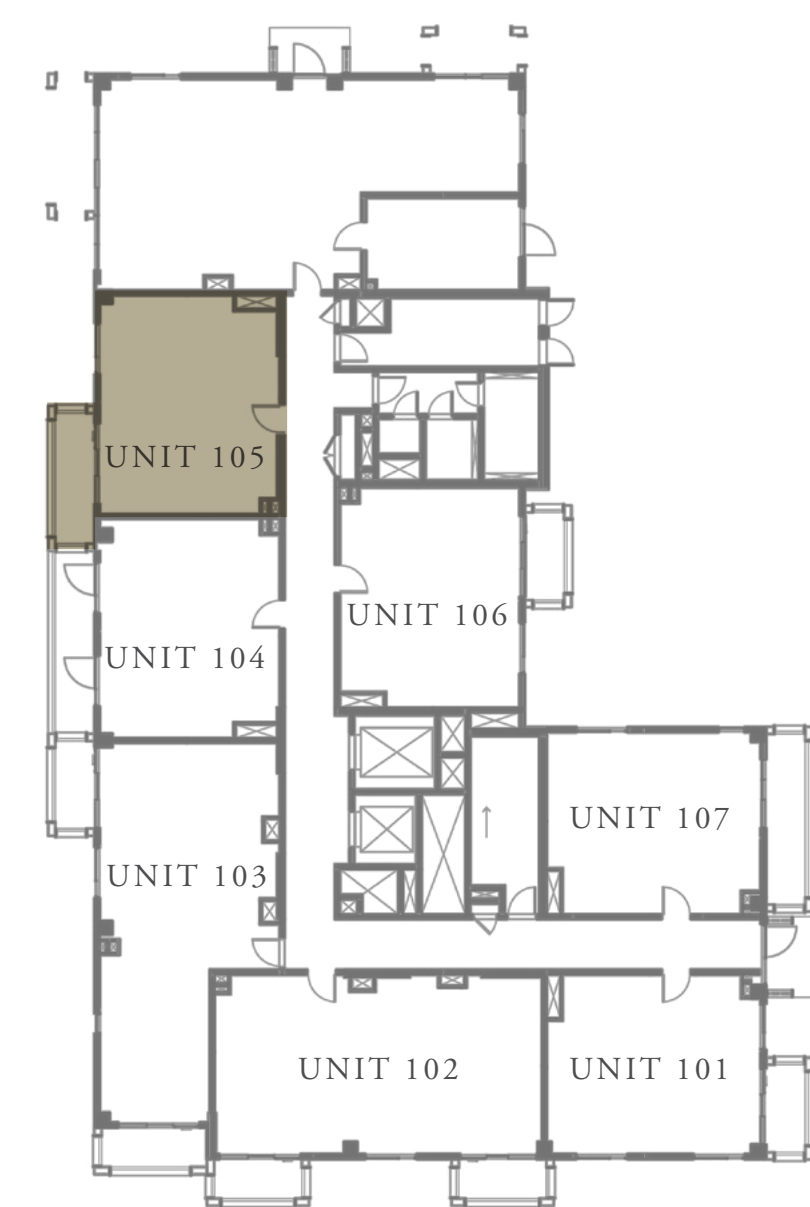
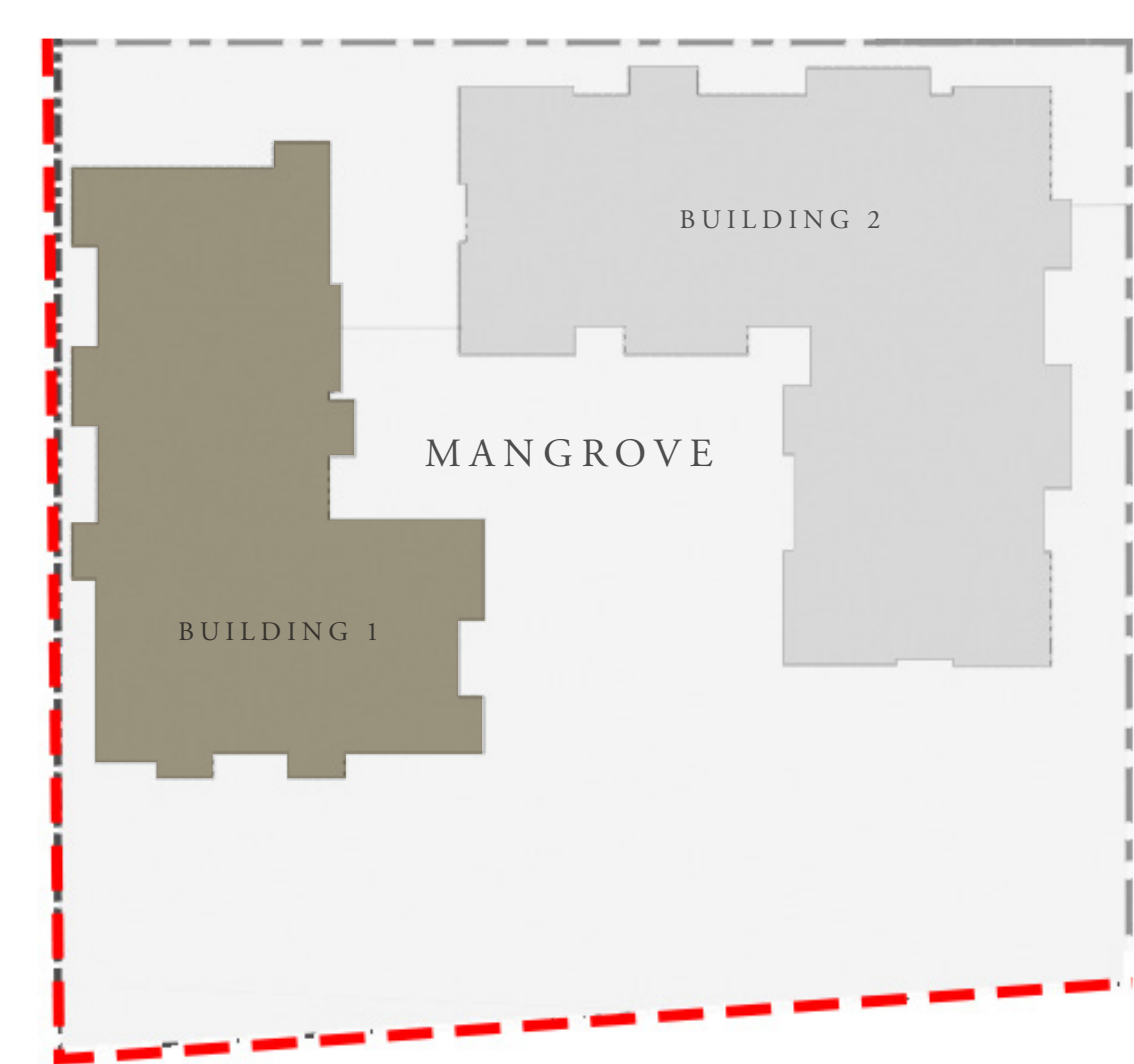
LEVEL 1

UNIT 105

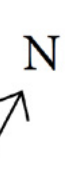
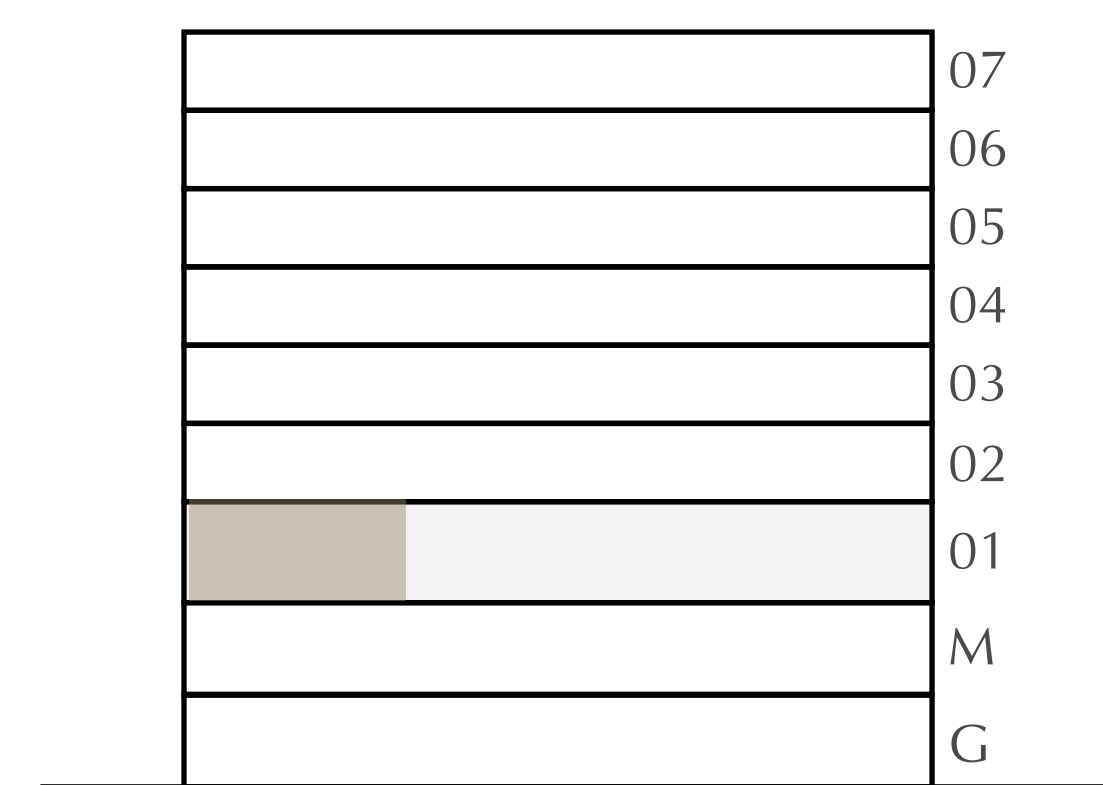
| | | |
|----------------|---------------|-------------|
| APARTMENT AREA | 623.66 SQ.FT. | 57.94 SQ.M. |
| BALCONY AREA | 92.03 SQ.FT. | 8.55 SQ.M. |
| TOTAL AREA | 715.69 SQ.FT. | 66.49 SQ.M. |

CANAL

PARK



KEY PLAN



FLOOR PLAN 1. All dimensions are in imperial and metric, and measured from finish to finish excluding construction tolerances. 2. All materials, dimensions, and drawings are approximate only. 3. Information is subject to change without notice, at developer's absolute discretion. 4. Actual area may vary from the stated area. 5. Drawings not to scale. 6. All images used are for illustrative purposes only and do not represent the actual size, features, specifications, fittings, and furnishings. 7. The developer reserves the right to make revisions / alterations, at its absolute discretion, without any liability whatsoever.

MANGROVE

CREEK BEACH

BUILDING - 1

1 BEDROOM

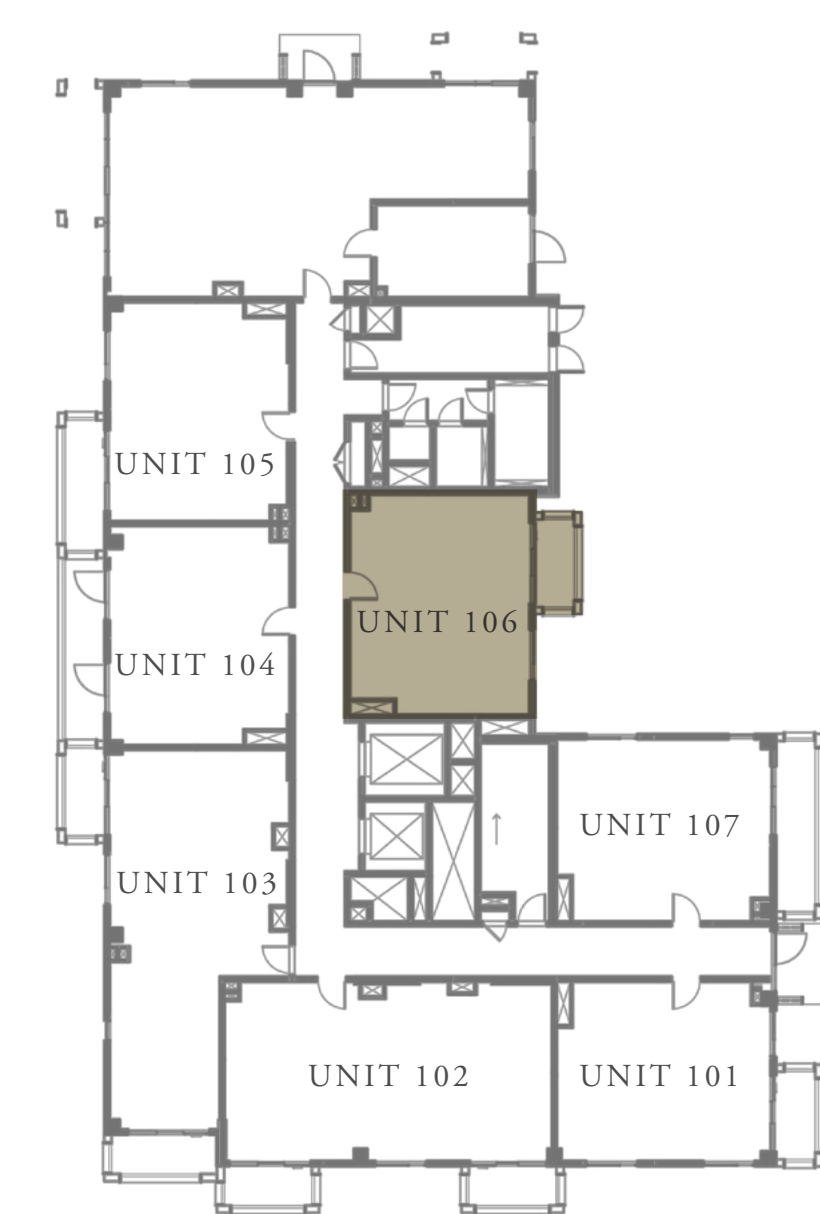
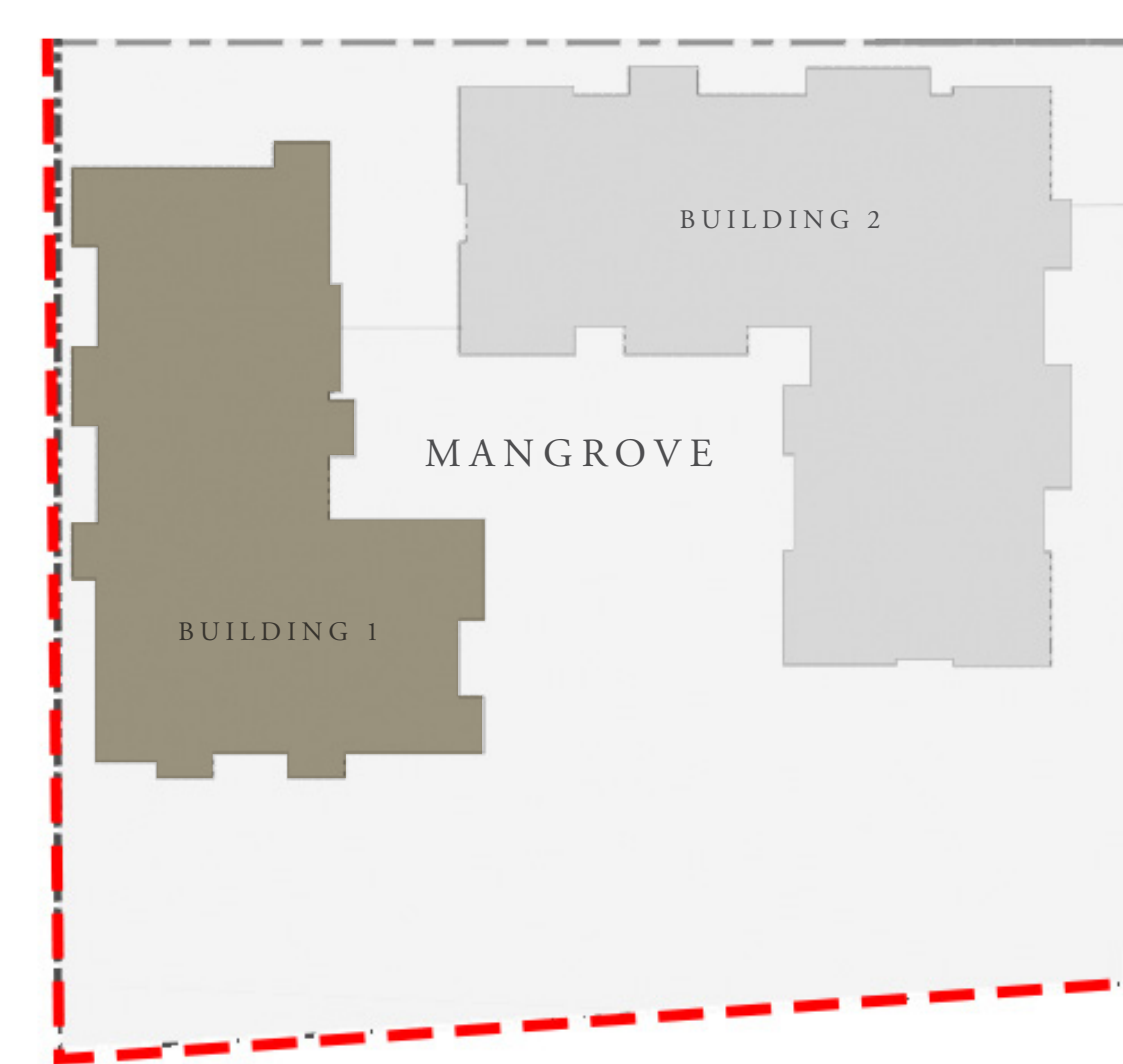
LEVEL 1

UNIT 106

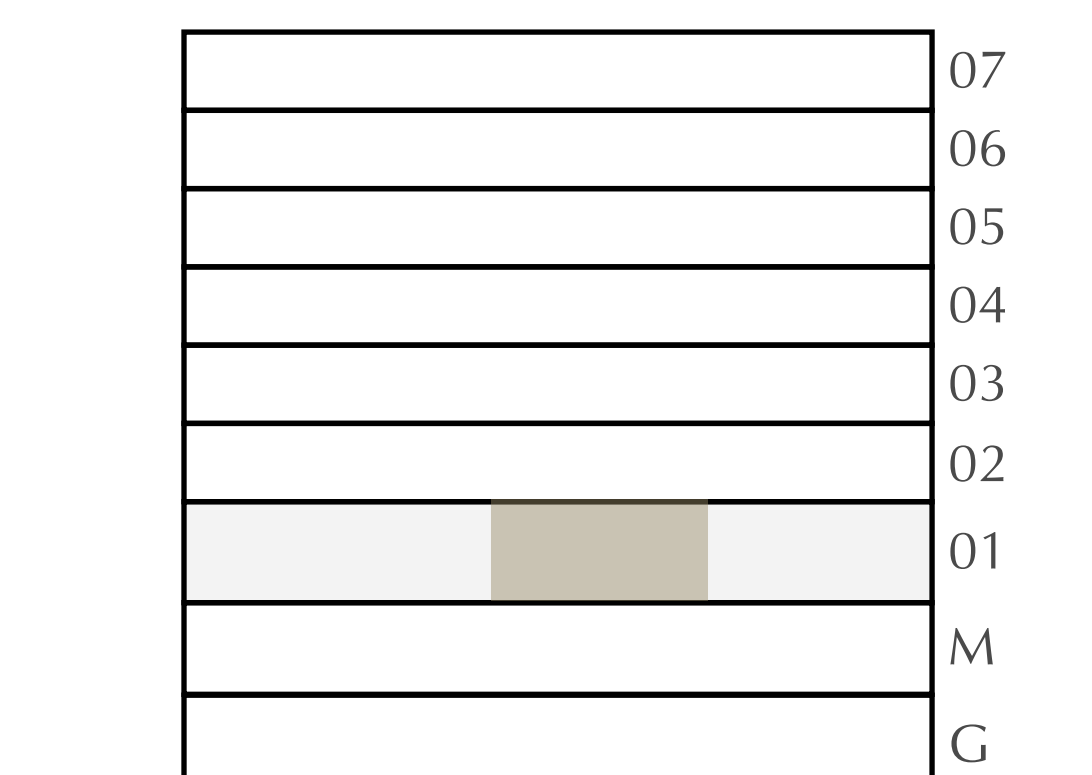
| | | |
|----------------|---------------|-------------|
| APARTMENT AREA | 631.63 SQ.FT. | 58.68 SQ.M. |
| BALCONY AREA | 63.40 SQ.FT. | 5.89 SQ.M. |
| TOTAL AREA | 695.03 SQ.FT. | 64.57 SQ.M. |

CANAL

PARK



KEY PLAN



FLOOR PLAN 1. All dimensions are in imperial and metric, and measured from finish to finish excluding construction tolerances. 2. All materials, dimensions, and drawings are approximate only. 3. Information is subject to change without notice, at developer's absolute discretion. 4. Actual area may vary from the stated area. 5. Drawings not to scale. 6. All images used are for illustrative purposes only and do not represent the actual size, features, specifications, fittings, and furnishings. 7. The developer reserves the right to make revisions / alterations, at it's absolute discretion, without any liability whatsoever.

MANGROVE

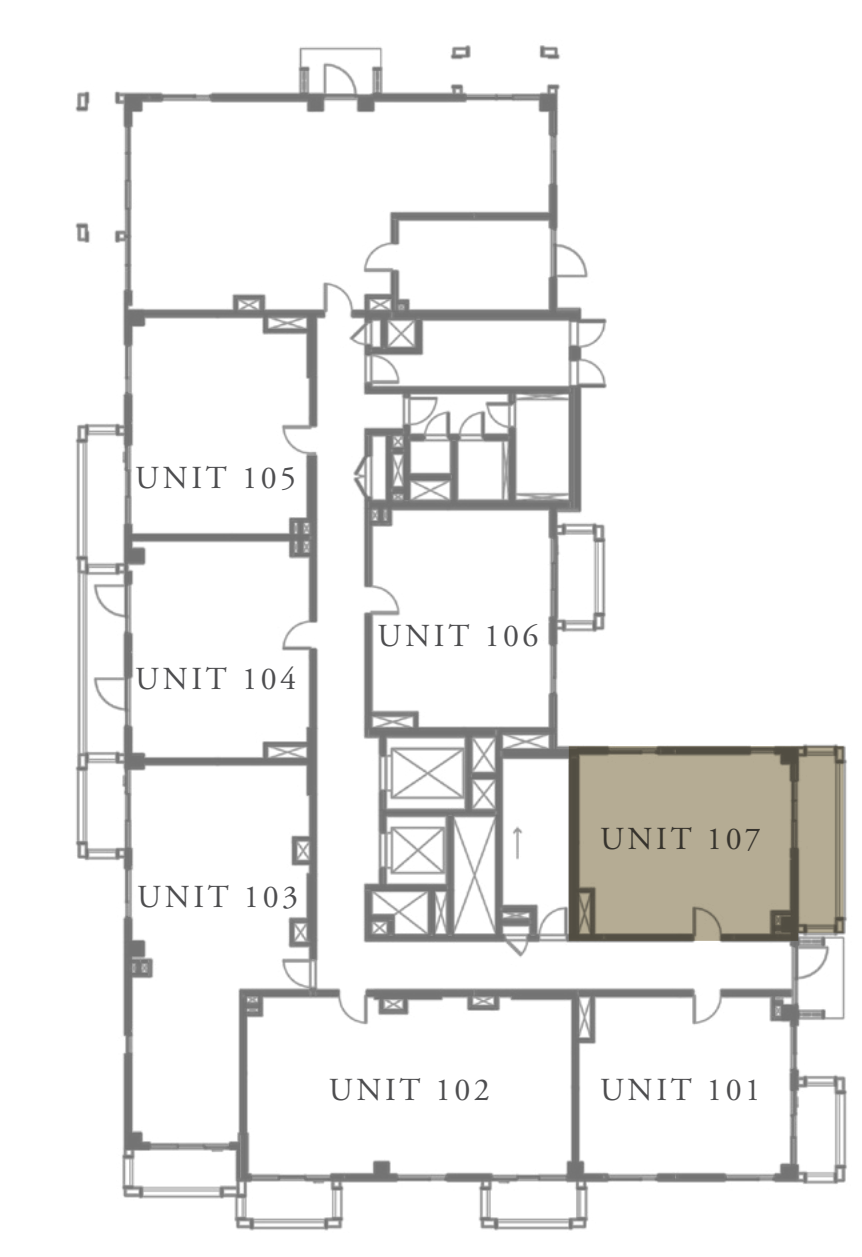
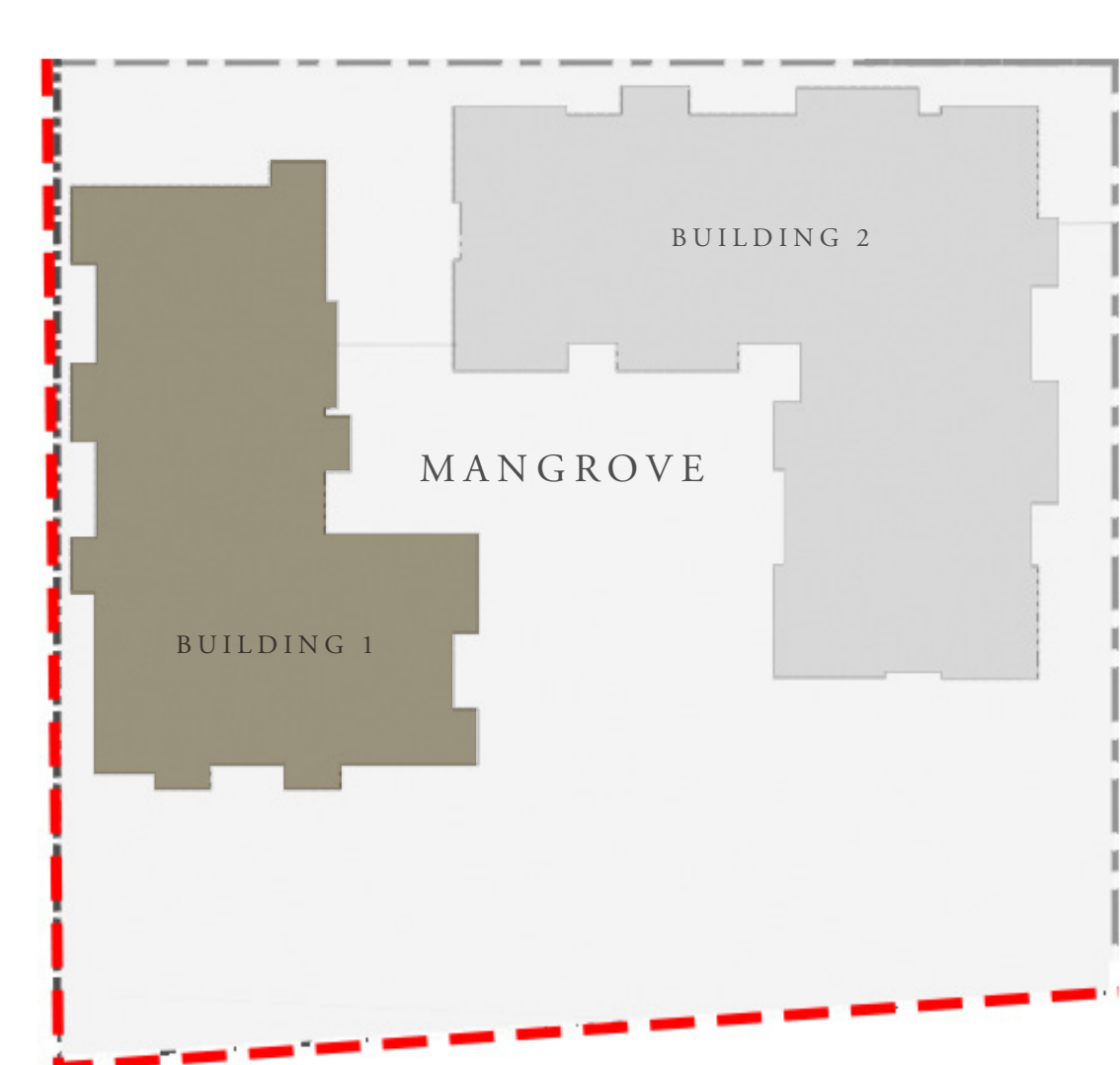
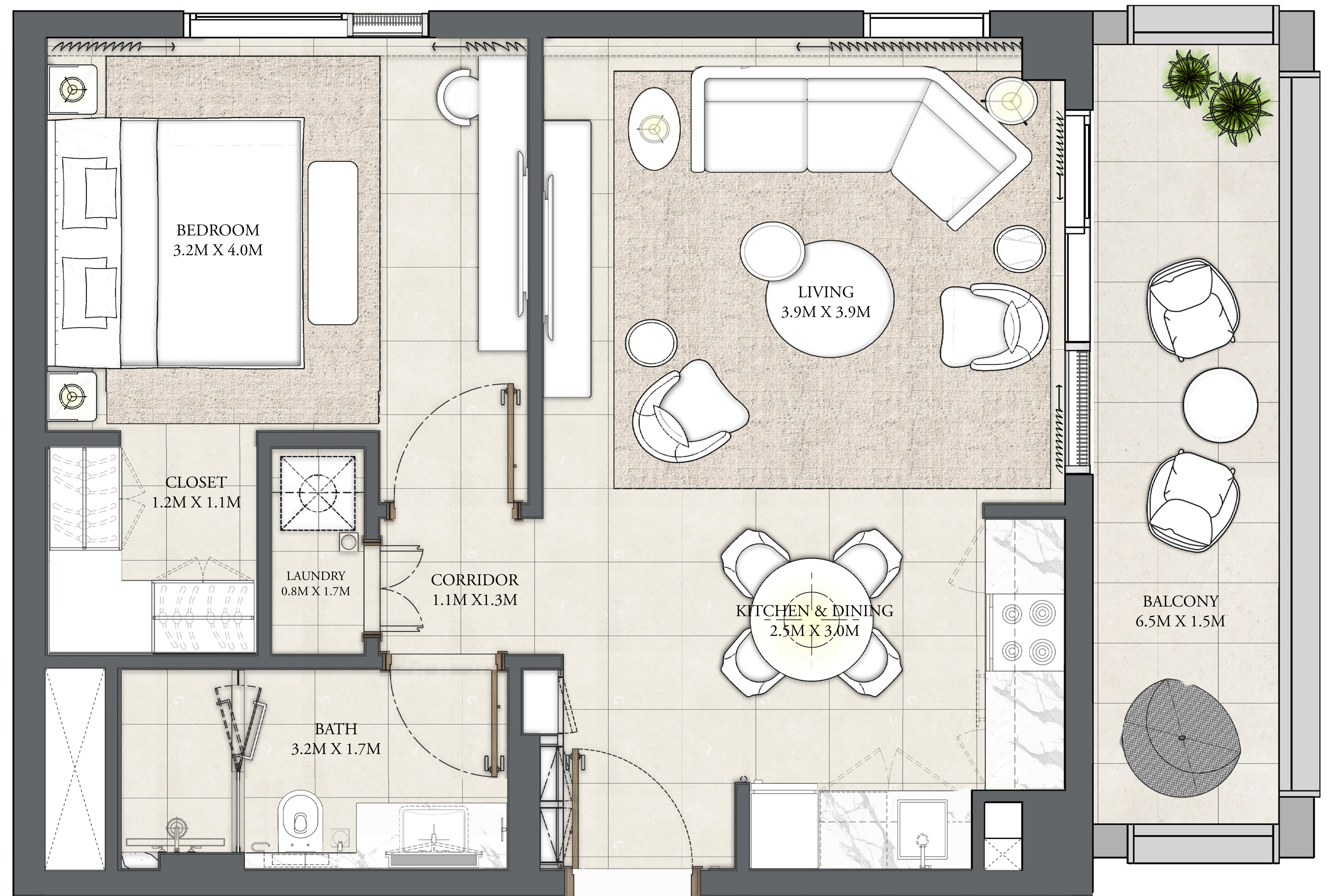
CREEK BEACH

BUILDING - 1

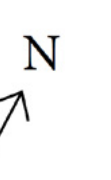
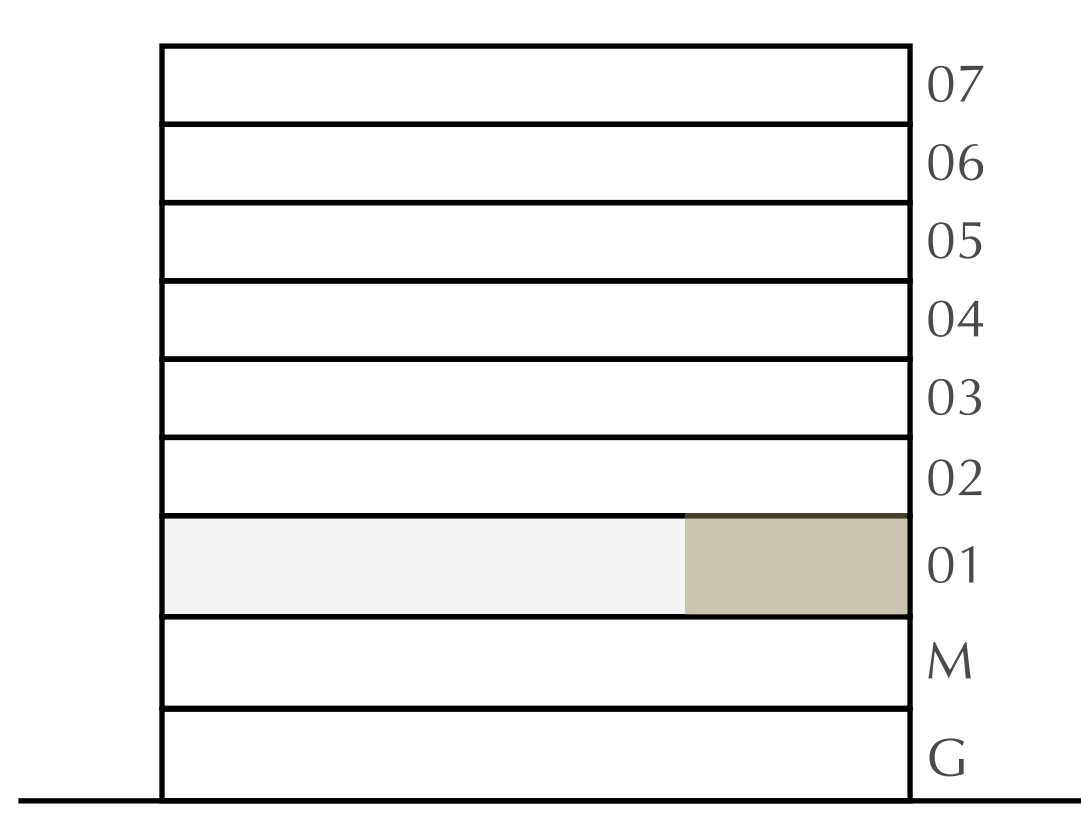
1 BEDROOM

LEVEL 1 UNIT 107

| | | |
|----------------|---------------|-------------|
| APARTMENT AREA | 619.36 SQ.FT. | 57.54 SQ.M. |
| BALCONY AREA | 119.16 SQ.FT. | 11.07 SQ.M. |
| TOTAL AREA | 738.52 SQ.FT. | 68.61 SQ.M. |



KEY PLAN



FLOOR PLAN 1. All dimensions are in imperial and metric, and measured from finish to finish excluding construction tolerances. 2. All materials, dimensions, and drawings are approximate only. 3. Information is subject to change without notice, at developer's absolute discretion. 4. Actual area may vary from the stated area. 5. Drawings not to scale. 6. All images used are for illustrative purposes only and do not represent the actual size, features, specifications, fittings, and furnishings. 7. The developer reserves the right to make revisions / alterations, at its absolute discretion, without any liability whatsoever.

MANGROVE

CREEK BEACH

BUILDING - 1

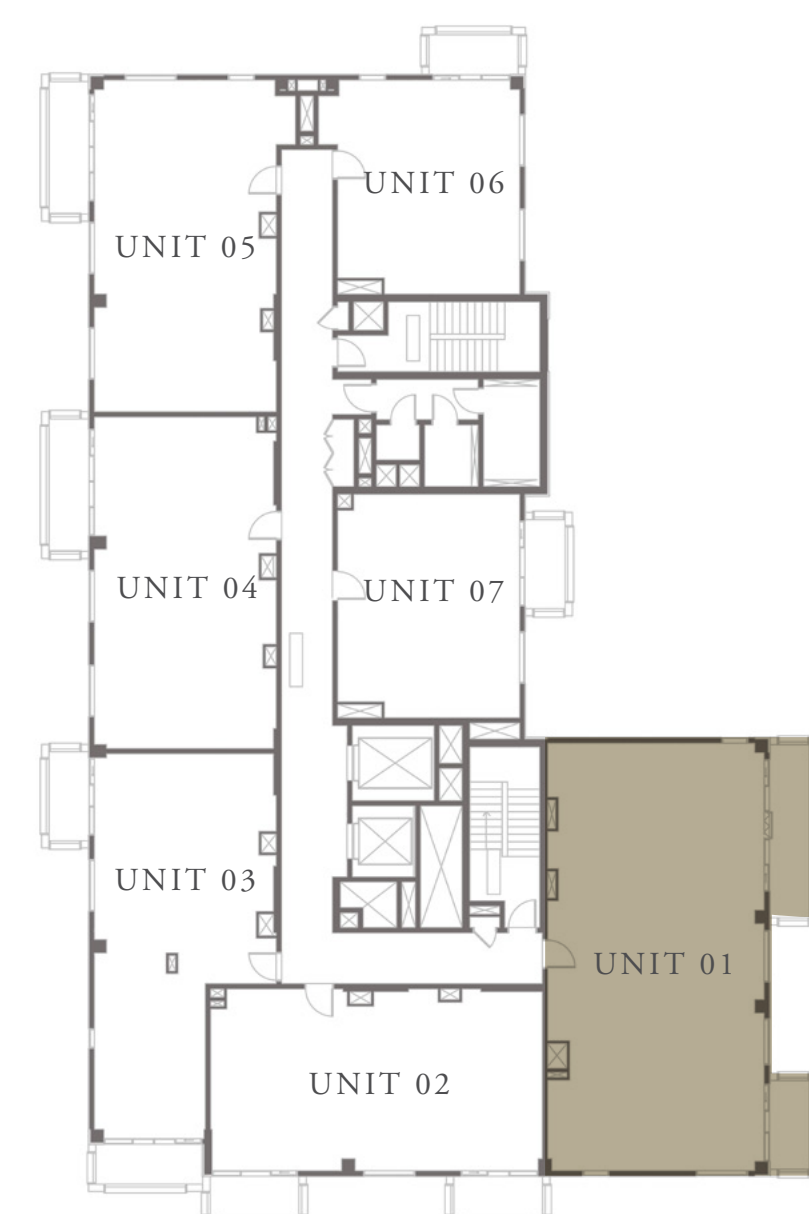
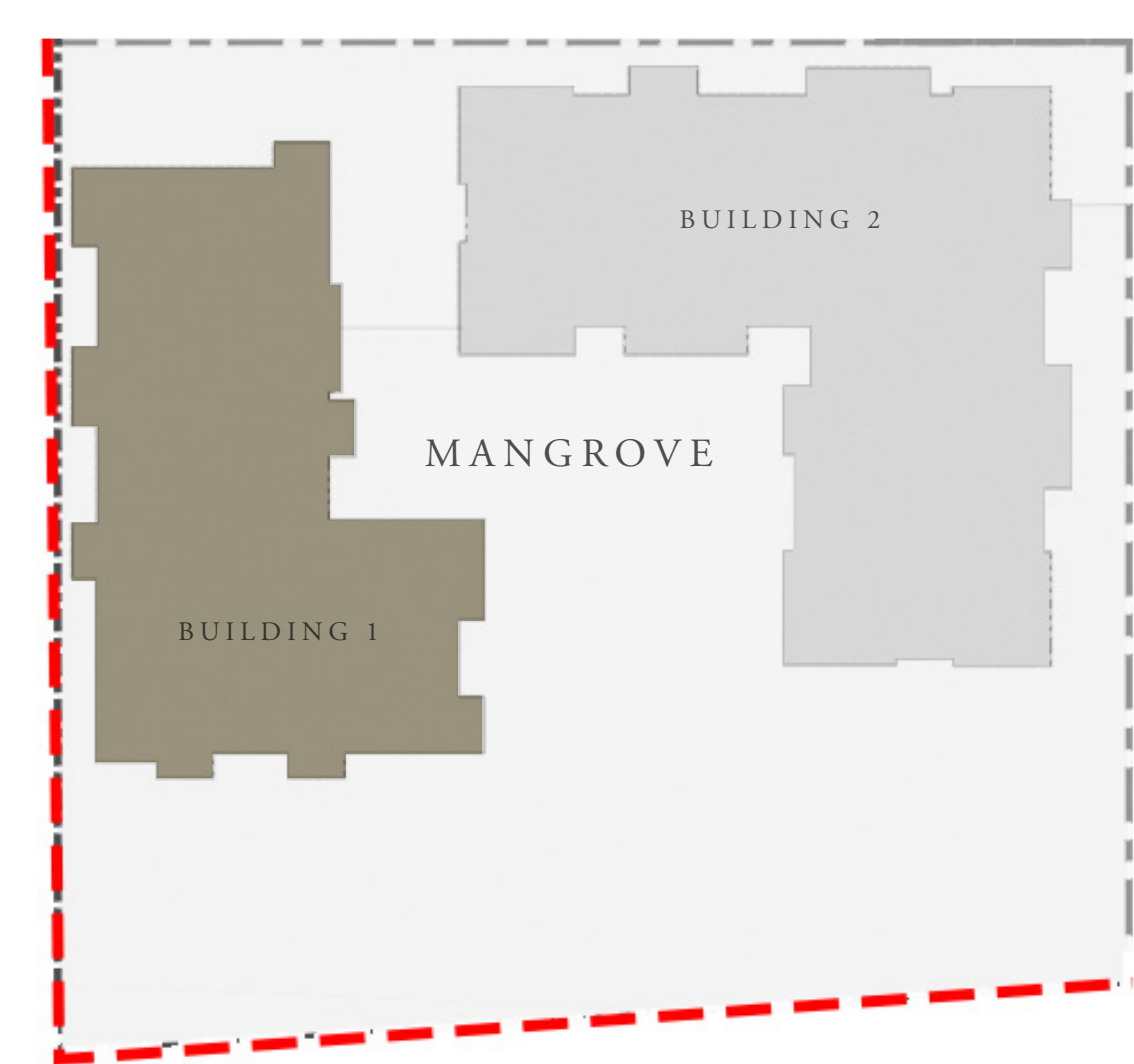
3 BEDROOM

LEVEL 2-7 UNIT 01

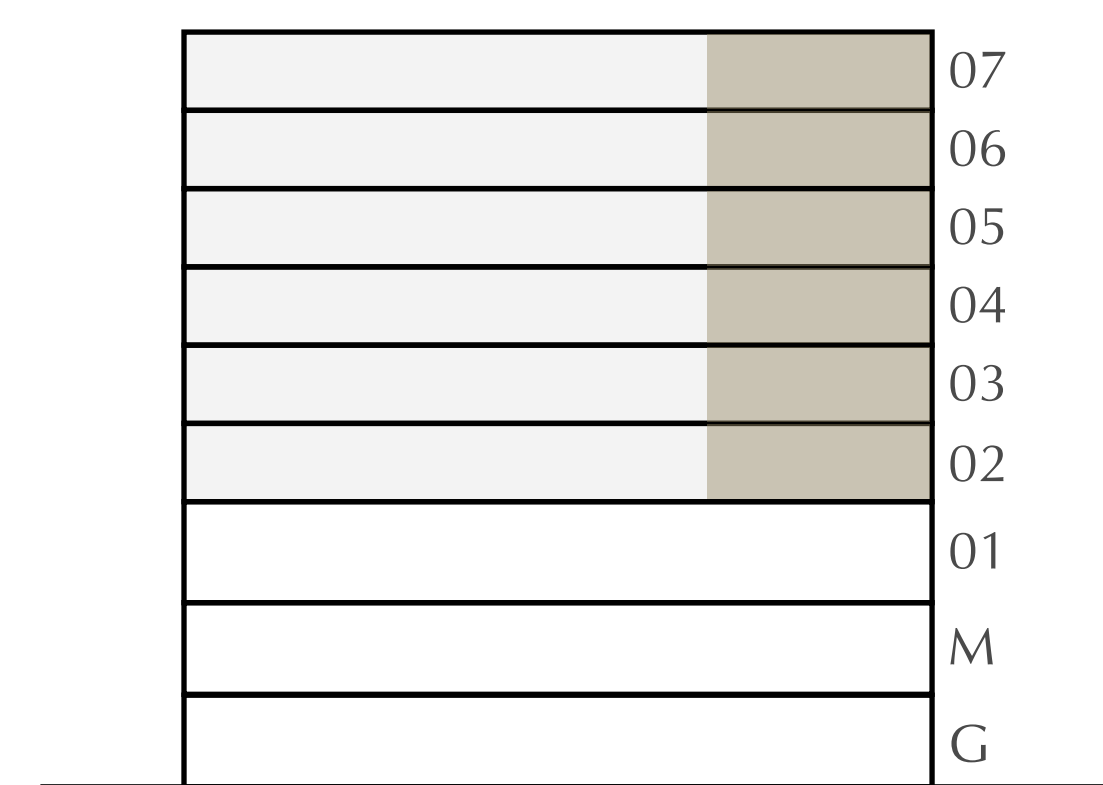
| | | |
|----------------|----------------|--------------|
| APARTMENT AREA | 1431.06 SQ.FT. | 132.95 SQ.M. |
| BALCONY AREA | 181.69 SQ.FT. | 16.88 SQ.M. |
| TOTAL AREA | 1612.75 SQ.FT. | 149.83 SQ.M. |

CANAL

PARK



KEY PLAN



FLOOR PLAN 1. All dimensions are in imperial and metric, and measured from finish to finish excluding construction tolerances. 2. All materials, dimensions, and drawings are approximate only. 3. Information is subject to change without notice, at developer's absolute discretion. 4. Actual area may vary from the stated area. 5. Drawings not to scale. 6. All images used are for illustrative purposes only and do not represent the actual size, features, specifications, fittings, and furnishings. 7. The developer reserves the right to make revisions / alterations, at it's absolute discretion, without any liability whatsoever.

MANGROVE

CREEK BEACH

BUILDING - 1

2 BEDROOM

LEVEL 2-7

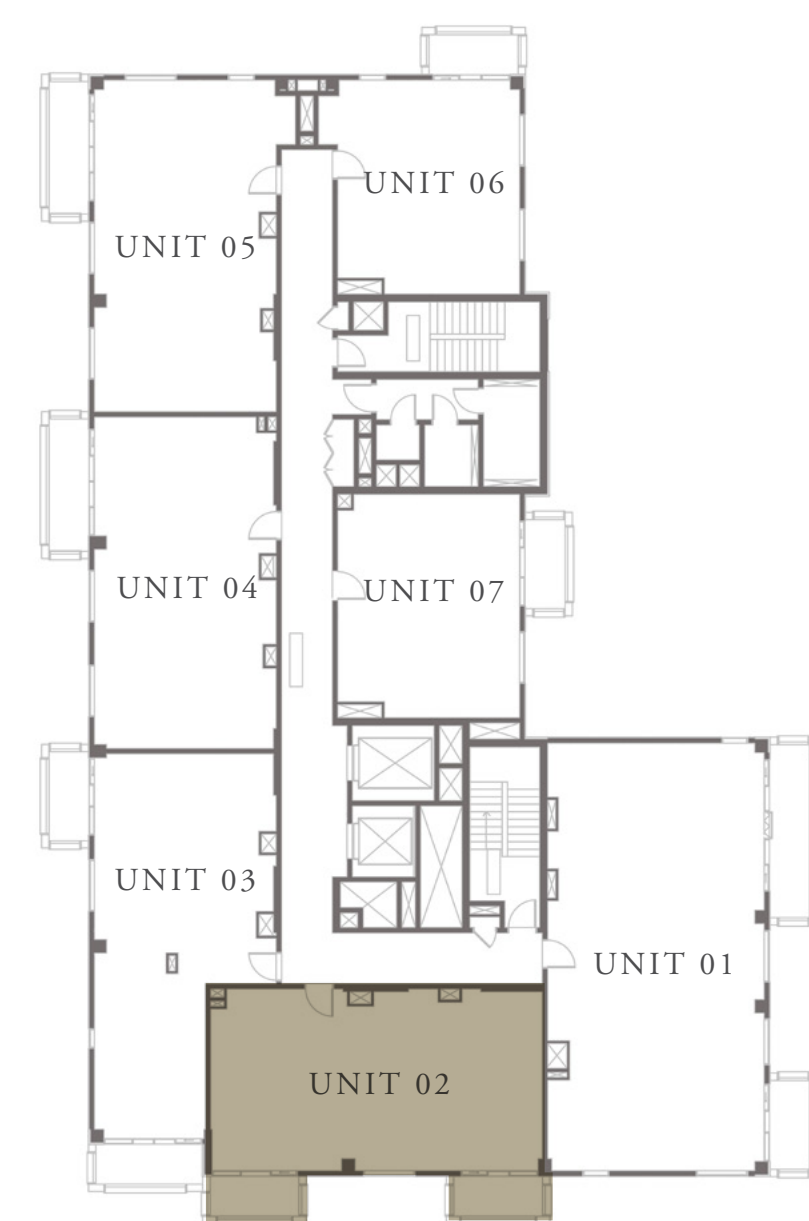
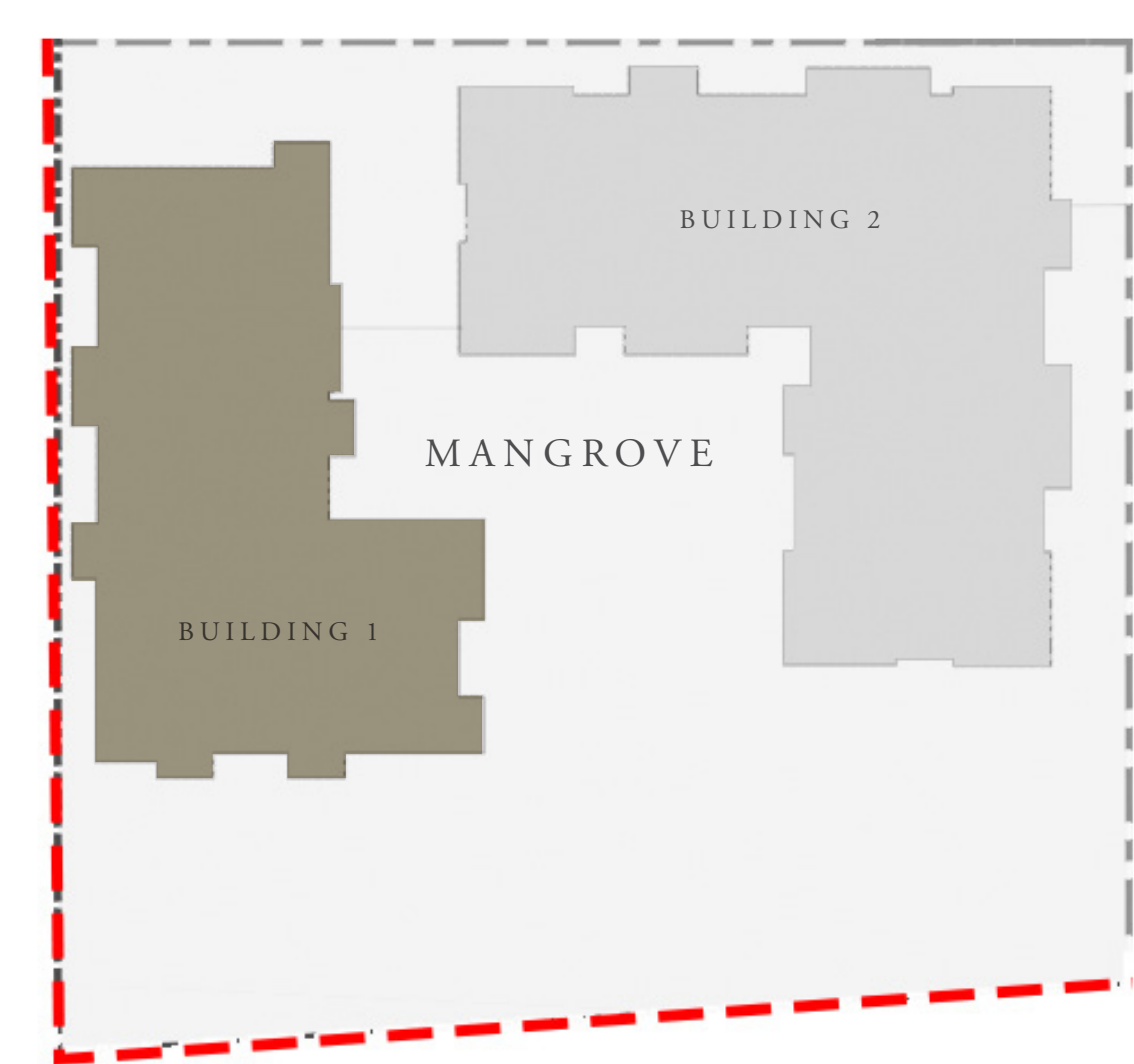
UNIT 02

| | | |
|----------------|----------------|-------------|
| APARTMENT AREA | 929.36 SQ.FT. | 86.34 SQ.M. |
| BALCONY AREA | 126.80 SQ.FT. | 11.78 SQ.M. |
| TOTAL AREA | 1056.16 SQ.FT. | 98.12 SQ.M. |

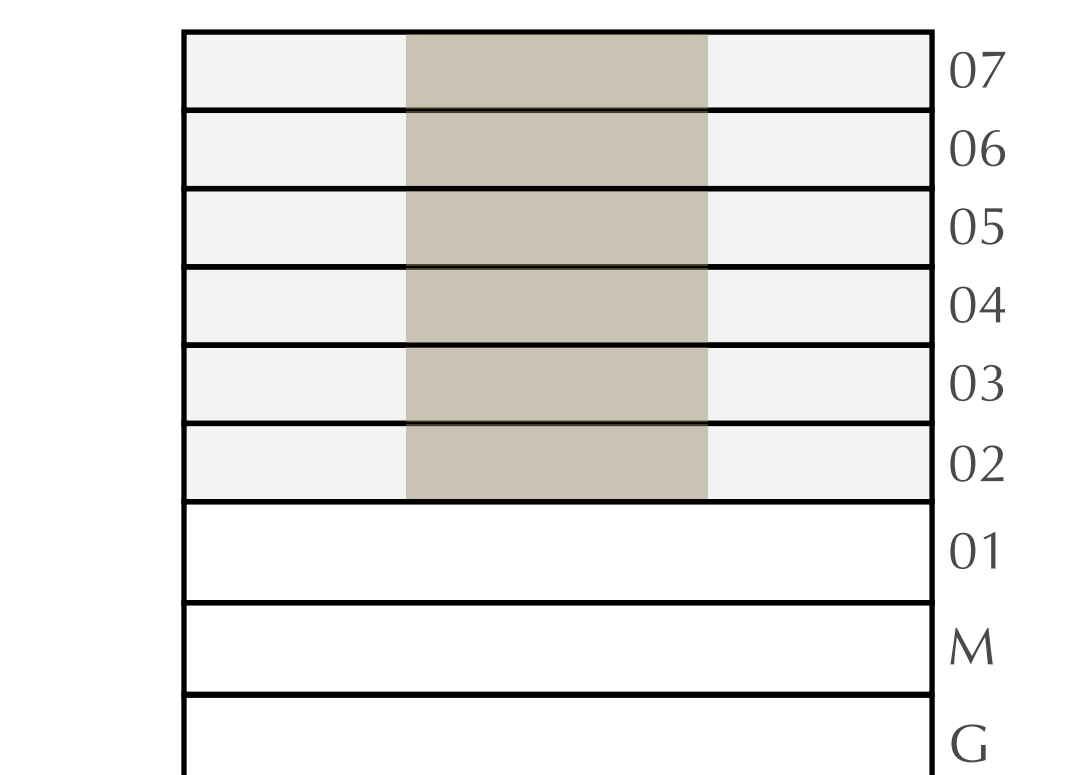


CANAL

PARK



KEY PLAN



FLOOR PLAN 1. All dimensions are in imperial and metric, and measured from finish to finish excluding construction tolerances. 2. All materials, dimensions, and drawings are approximate only. 3. Information is subject to change without notice, at developer's absolute discretion. 4. Actual area may vary from the stated area. 5. Drawings not to scale. 6. All images used are for illustrative purposes only and do not represent the actual size, features, specifications, fittings, and furnishings. 7. The developer reserves the right to make revisions / alterations, at it's absolute discretion, without any liability whatsoever.

MANGROVE

CREEK BEACH

BUILDING - 1

2 BEDROOM

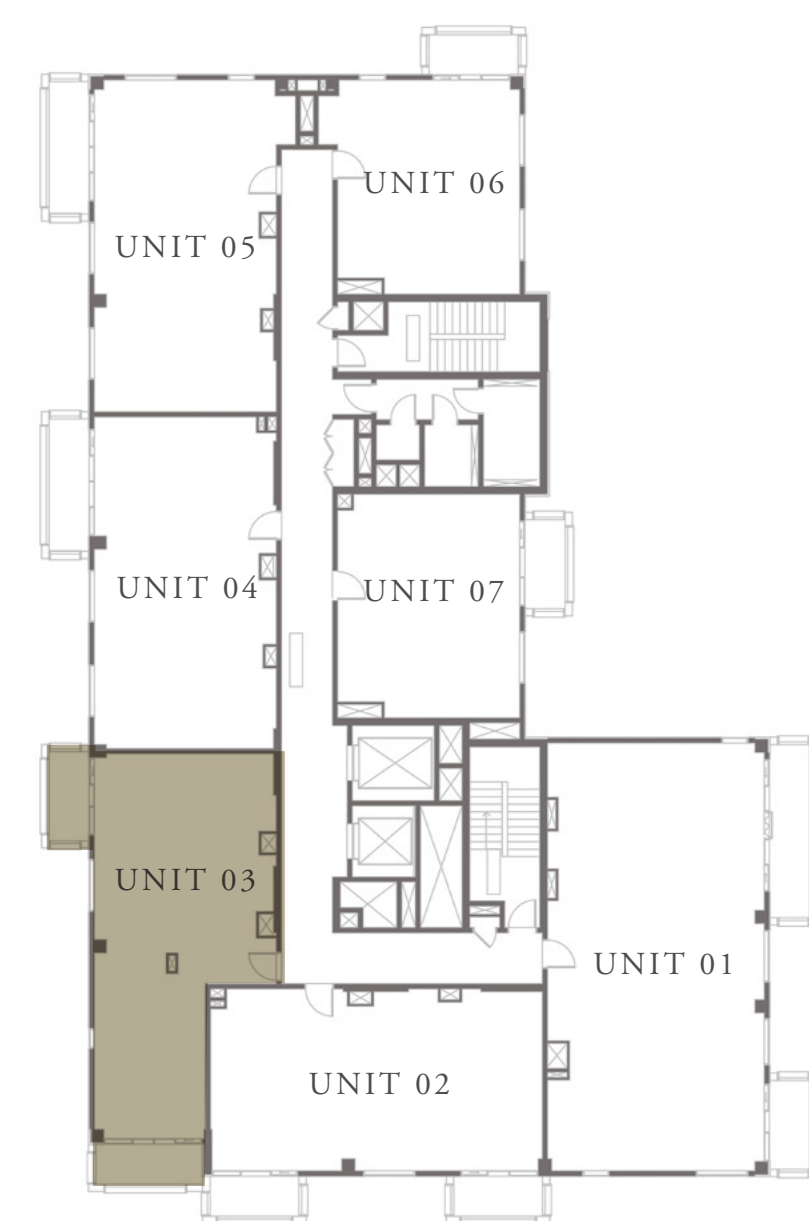
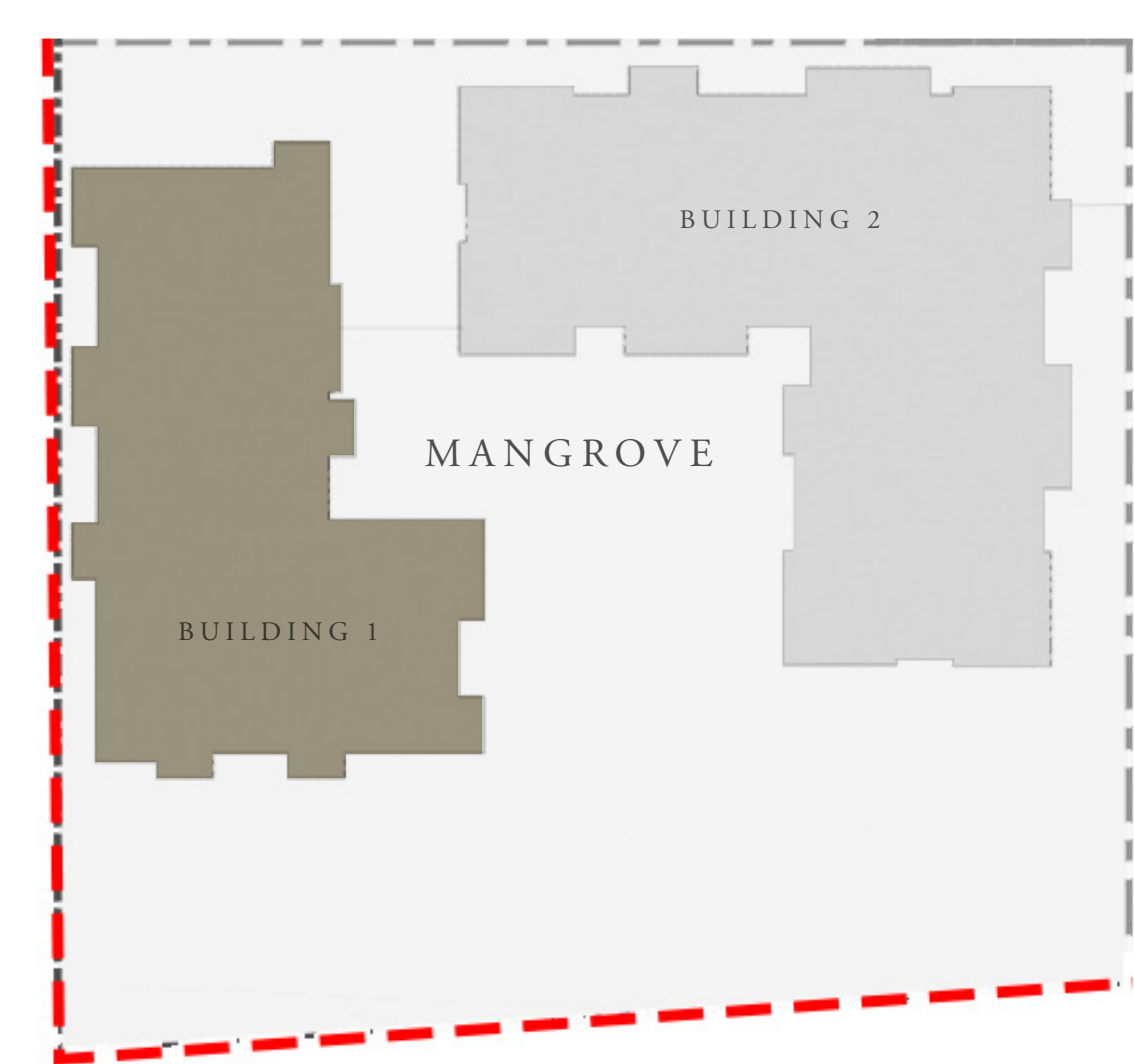
LEVEL 2-7

UNIT 03

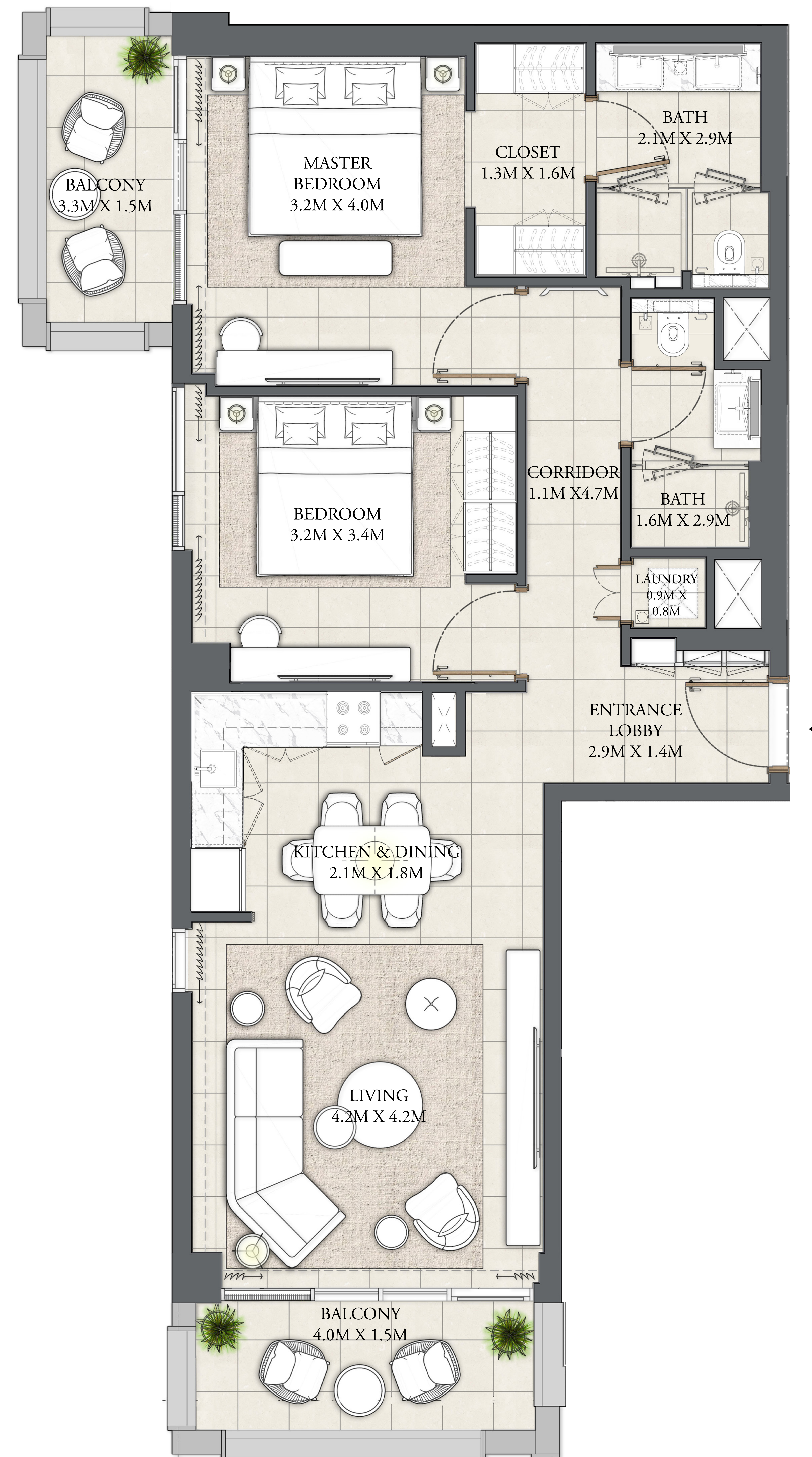
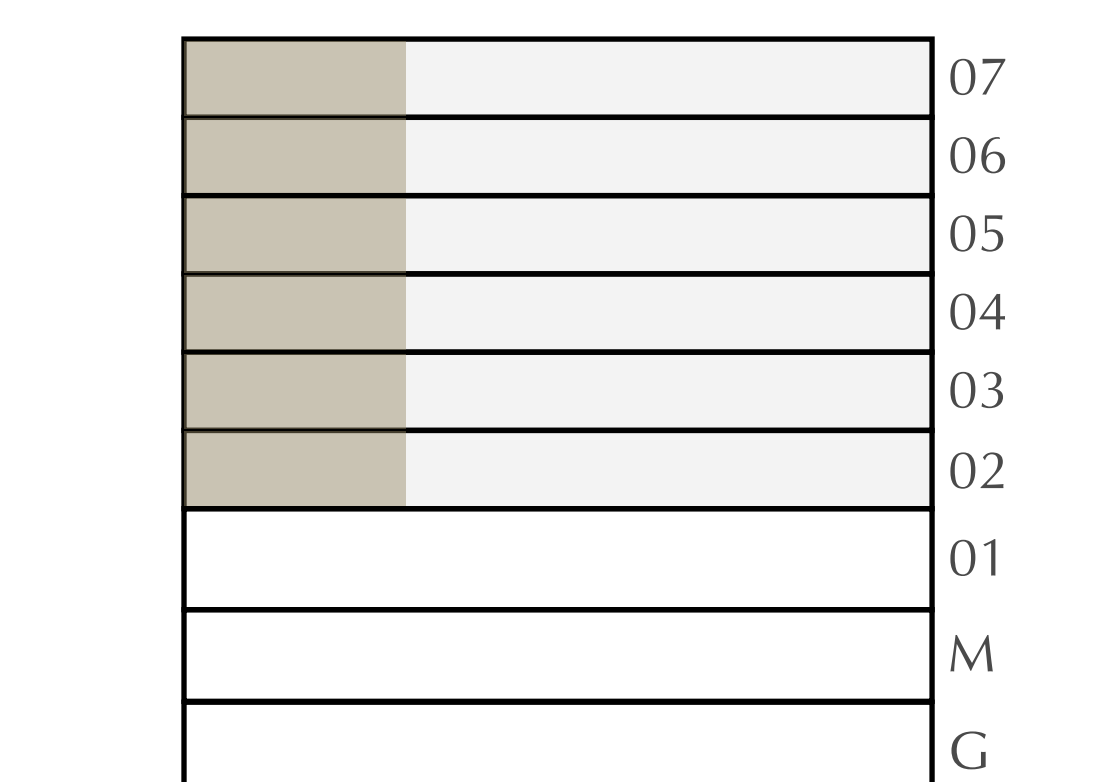
| | | |
|----------------|----------------|-------------|
| APARTMENT AREA | 915.79 SQ.FT. | 85.08 SQ.M. |
| BALCONY AREA | 141.65 SQ.FT. | 13.16 SQ.M. |
| TOTAL AREA | 1057.44 SQ.FT. | 98.24 SQ.M. |

CANAL

PARK



KEY PLAN



FLOOR PLAN 1. All dimensions are in imperial and metric, and measured from finish to finish excluding construction tolerances. 2. All materials, dimensions, and drawings are approximate only. 3. Information is subject to change without notice, at developer's absolute discretion. 4. Actual area may vary from the stated area. 5. Drawings not to scale. 6. All images used are for illustrative purposes only and do not represent the actual size, features, specifications, fittings, and furnishings. 7. The developer reserves the right to make revisions / alterations, at it's absolute discretion, without any liability whatsoever.

MANGROVE

CREEK BEACH

BUILDING - 1

2 BEDROOM

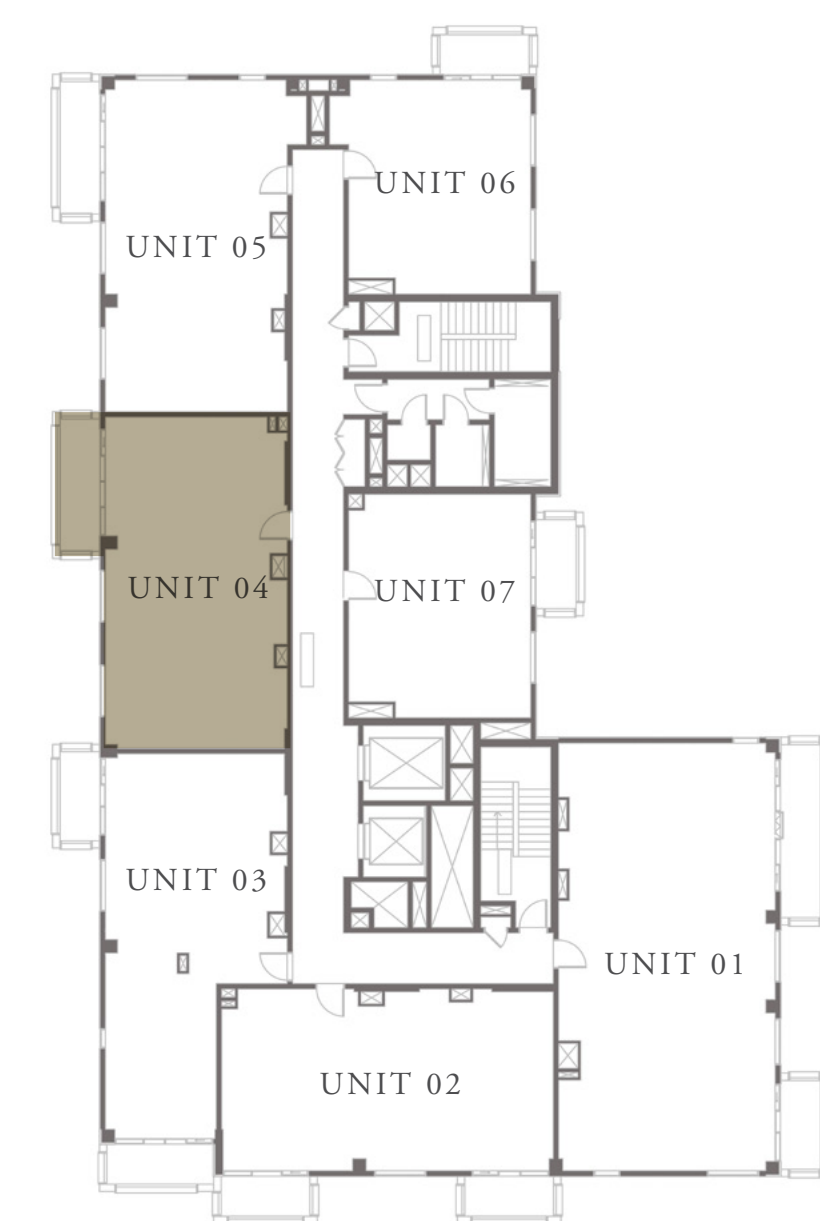
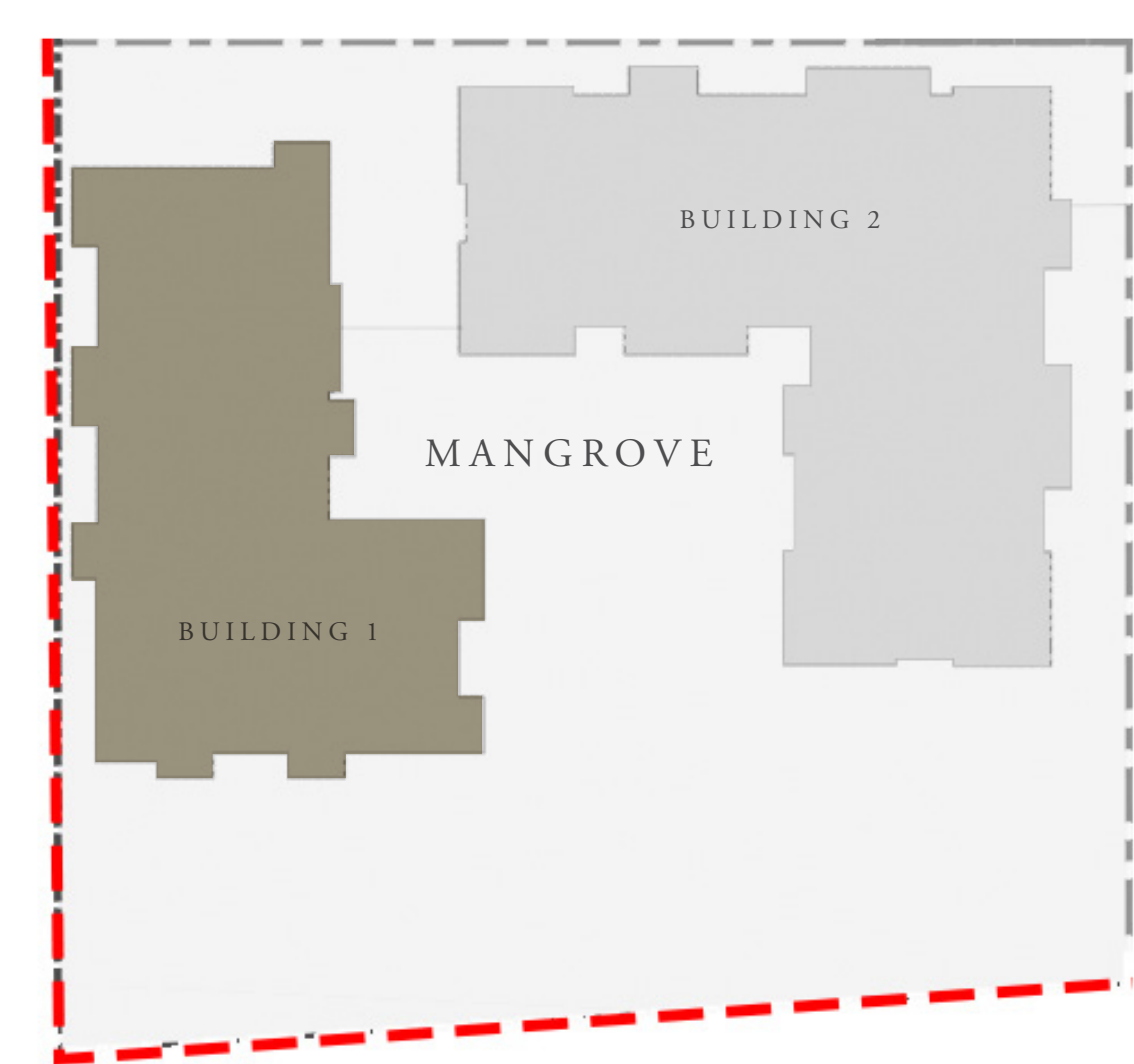
LEVEL 2-7

UNIT 04

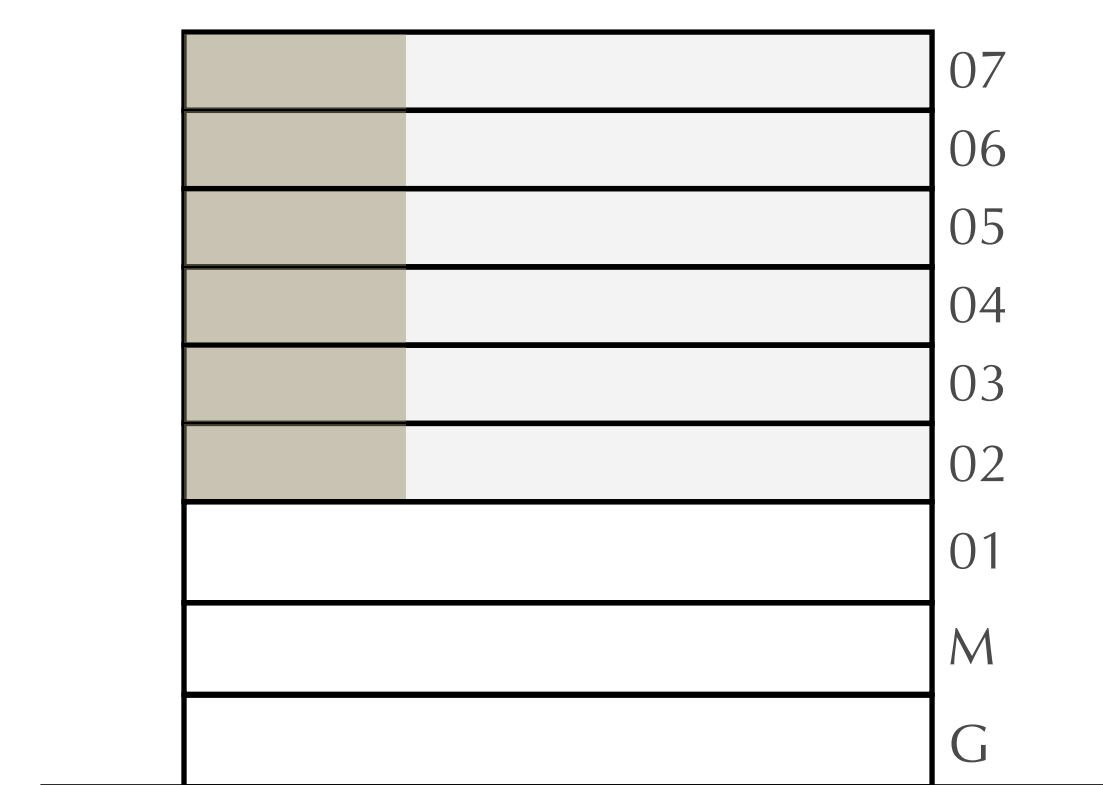
| | | |
|----------------|----------------|-------------|
| APARTMENT AREA | 931.83 SQ.FT. | 86.57 SQ.M. |
| BALCONY AREA | 93.00 SQ.FT. | 8.64 SQ.M. |
| TOTAL AREA | 1024.83 SQ.FT. | 95.21 SQ.M. |

CANAL

PARK



KEY PLAN



FLOOR PLAN 1. All dimensions are in imperial and metric, and measured from finish to finish excluding construction tolerances. 2. All materials, dimensions, and drawings are approximate only. 3. Information is subject to change without notice, at developer's absolute discretion. 4. Actual area may vary from the stated area. 5. Drawings not to scale. 6. All images used are for illustrative purposes only and do not represent the actual size, features, specifications, fittings, and furnishings. 7. The developer reserves the right to make revisions / alterations, at its absolute discretion, without any liability whatsoever.

MANGROVE

CREEK BEACH

BUILDING - 1

2 BEDROOM

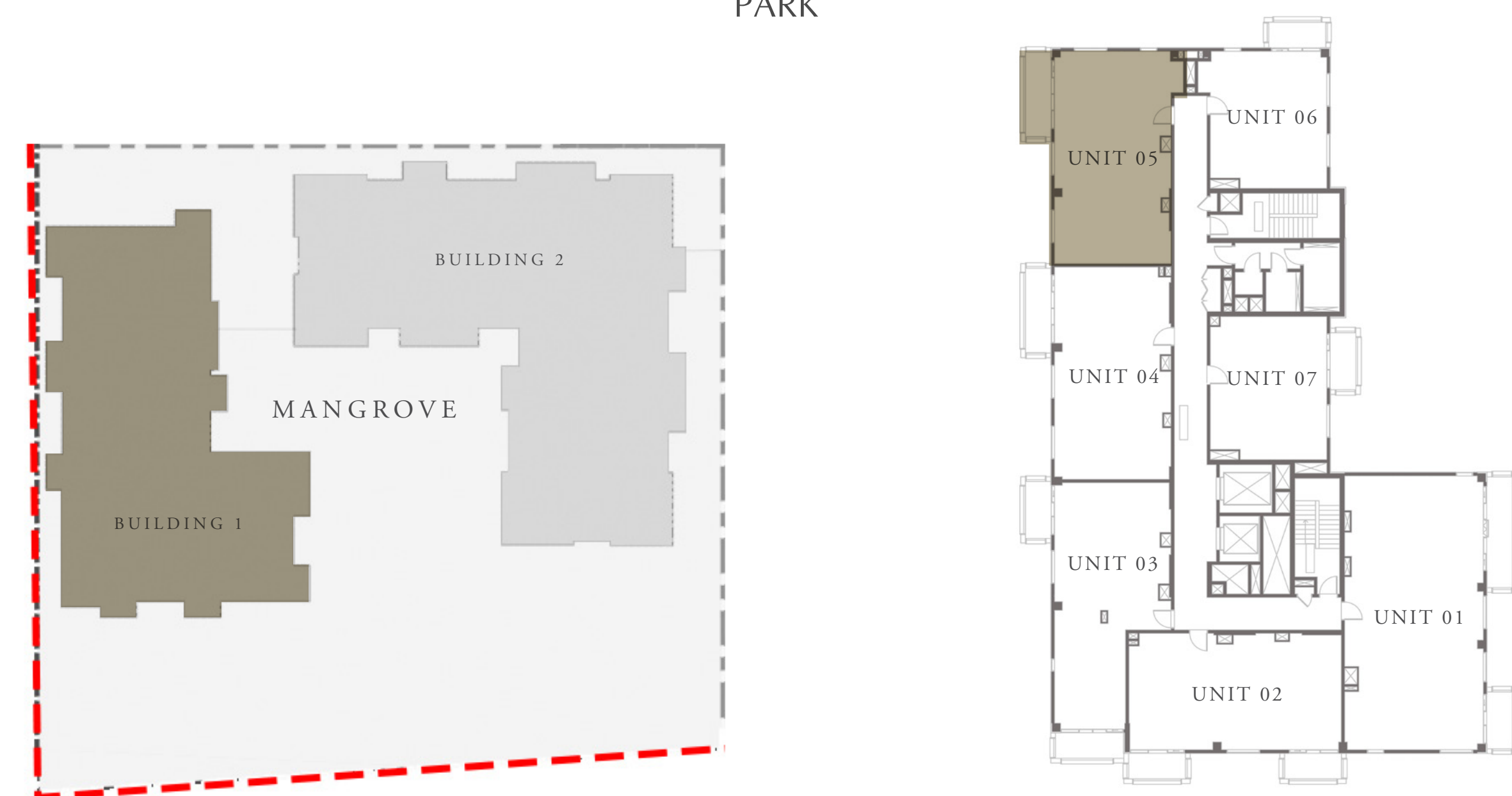
LEVEL 2-7

UNIT 05

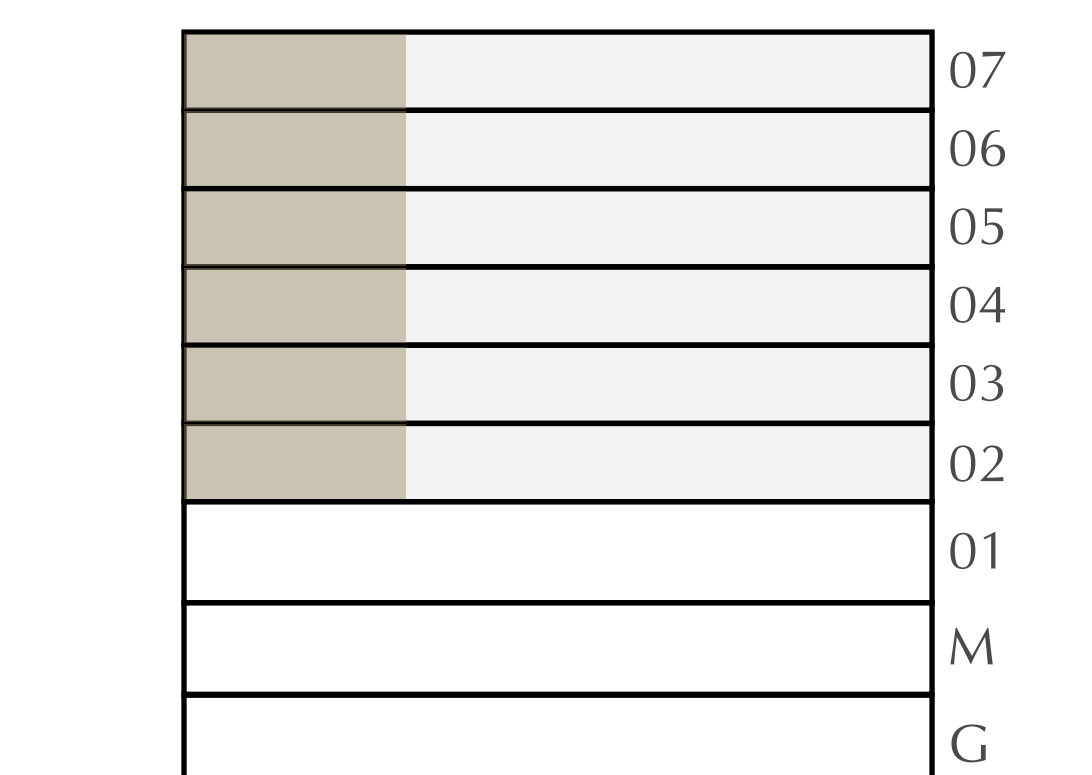
| | | |
|----------------|----------------|-------------|
| APARTMENT AREA | 955.19 SQ.FT. | 88.74 SQ.M. |
| BALCONY AREA | 93.00 SQ.FT. | 8.64 SQ.M. |
| TOTAL AREA | 1048.19 SQ.FT. | 97.38 SQ.M. |

CANAL

PARK



KEY PLAN



FLOOR PLAN 1. All dimensions are in imperial and metric, and measured from finish to finish excluding construction tolerances. 2. All materials, dimensions, and drawings are approximate only. 3. Information is subject to change without notice, at developer's absolute discretion. 4. Actual area may vary from the stated area. 5. Drawings not to scale. 6. All images used are for illustrative purposes only and do not represent the actual size, features, specifications, fittings, and furnishings. 7. The developer reserves the right to make revisions / alterations, at it's absolute discretion, without any liability whatsoever.

MANGROVE

CREEK BEACH

BUILDING - 1

1 BEDROOM

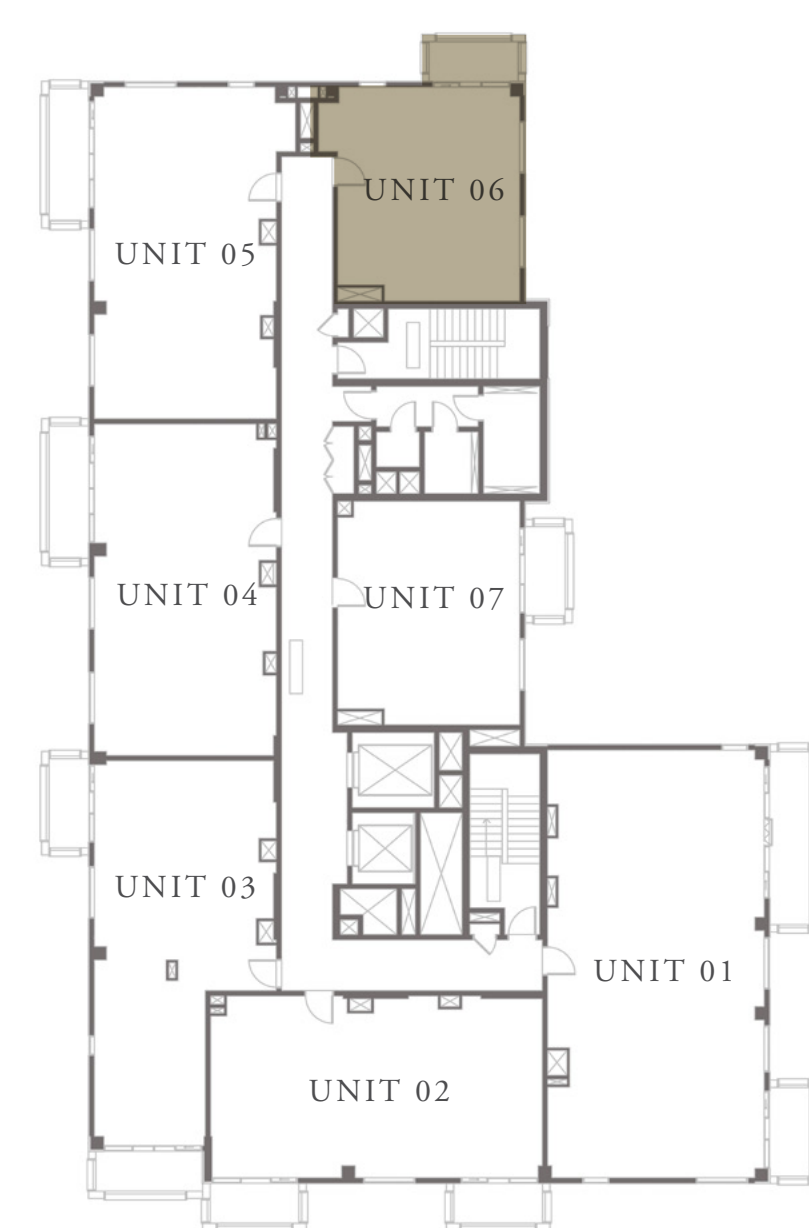
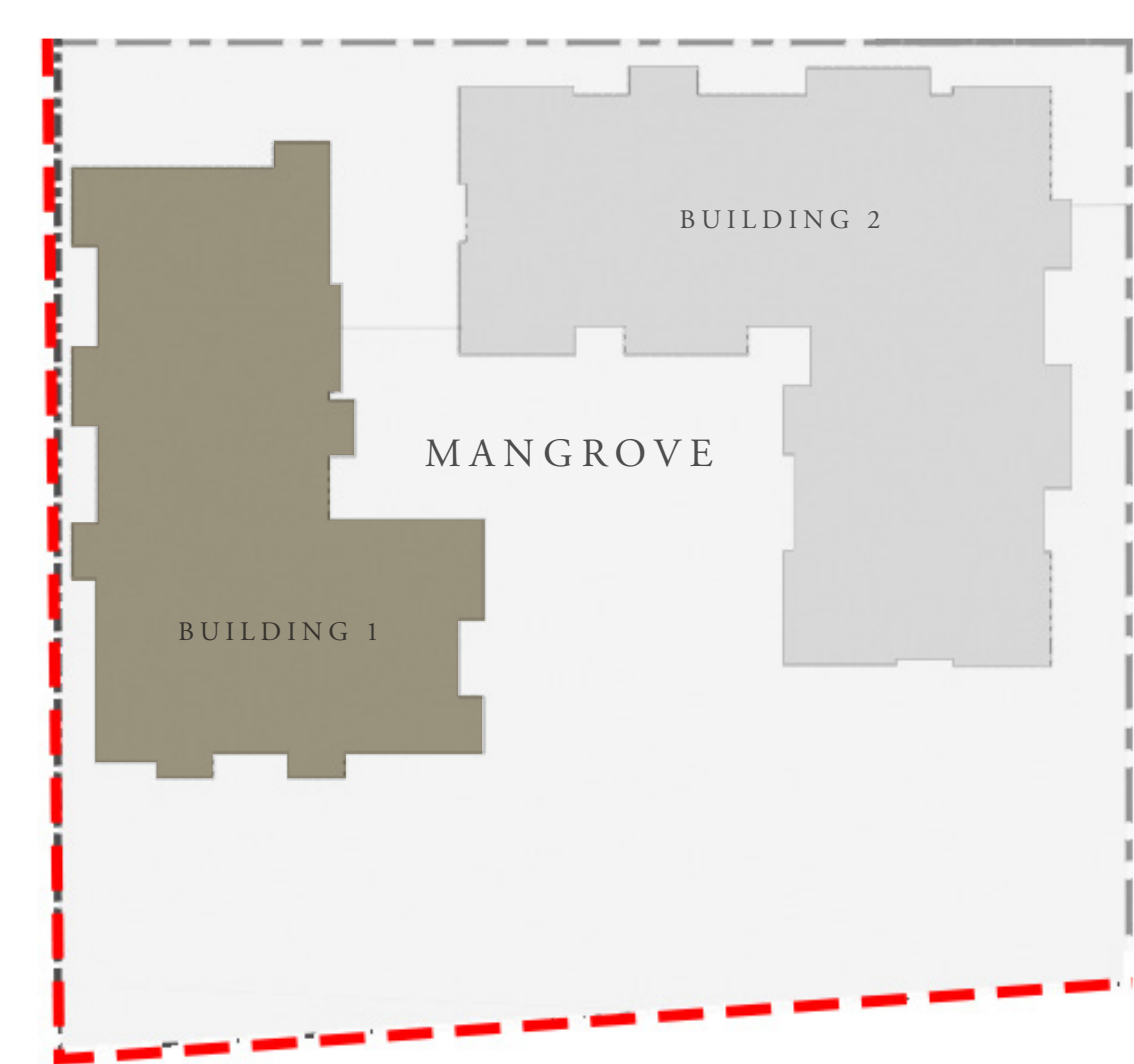
LEVEL 2-7

UNIT 06

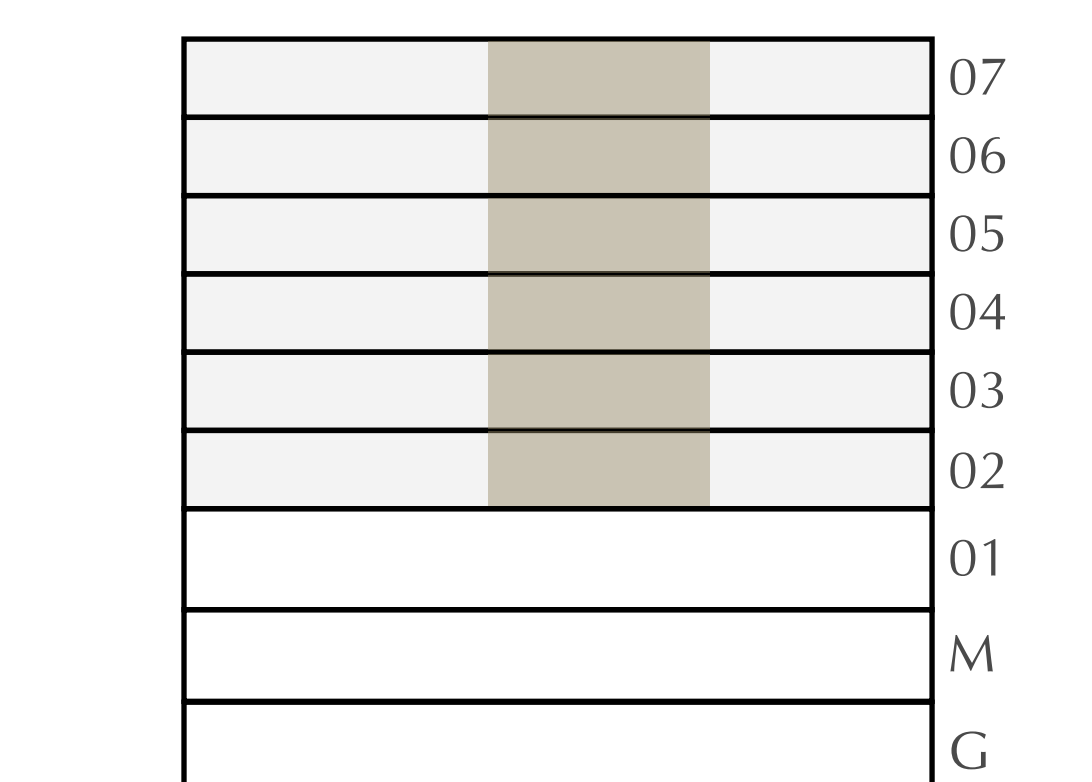
| | | |
|----------------|---------------|-------------|
| APARTMENT AREA | 626.14 SQ.FT. | 58.17 SQ.M. |
| BALCONY AREA | 63.51 SQ.FT. | 5.90 SQ.M. |
| TOTAL AREA | 689.65 SQ.FT. | 64.07 SQ.M. |

CANAL

PARK



KEY PLAN



FLOOR PLAN 1. All dimensions are in imperial and metric, and measured from finish to finish excluding construction tolerances. 2. All materials, dimensions, and drawings are approximate only. 3. Information is subject to change without notice, at developer's absolute discretion. 4. Actual area may vary from the stated area. 5. Drawings not to scale. 6. All images used are for illustrative purposes only and do not represent the actual size, features, specifications, fittings, and furnishings. 7. The developer reserves the right to make revisions / alterations, at it's absolute discretion, without any liability whatsoever.

MANGROVE

CREEK BEACH

BUILDING - 1

1 BEDROOM

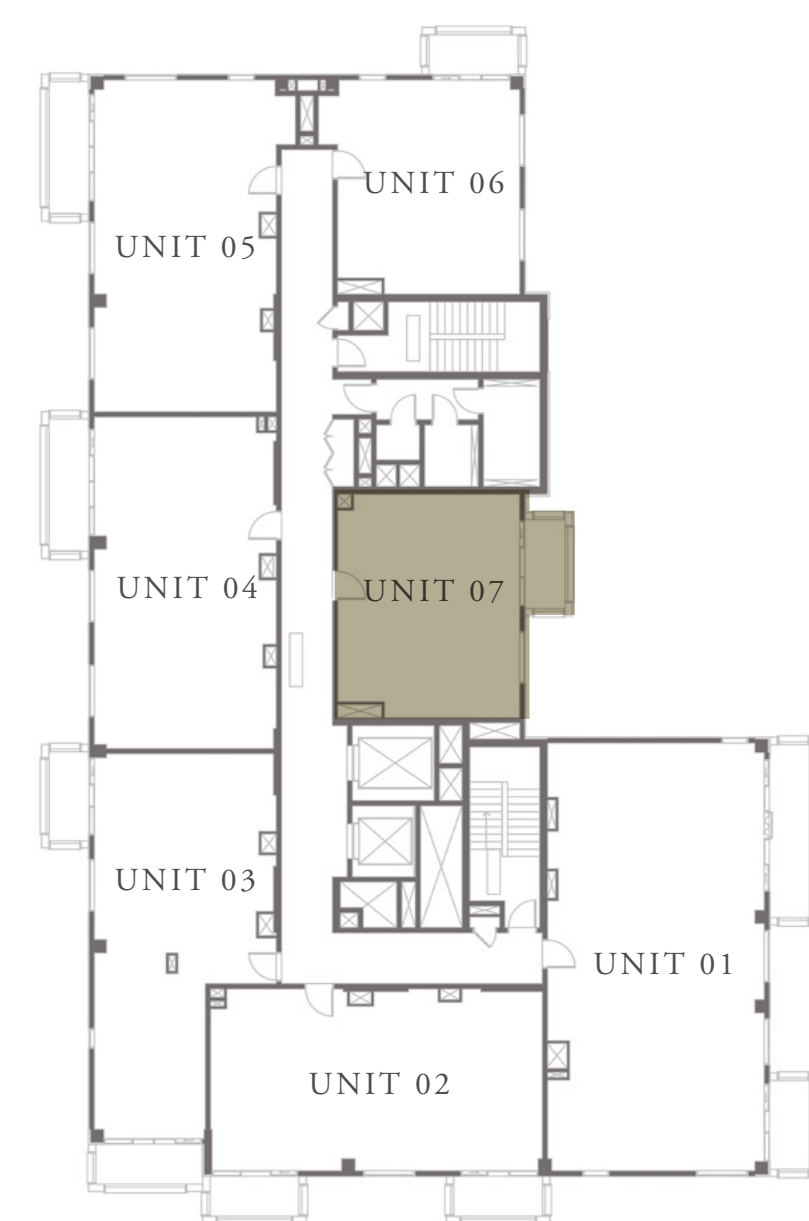
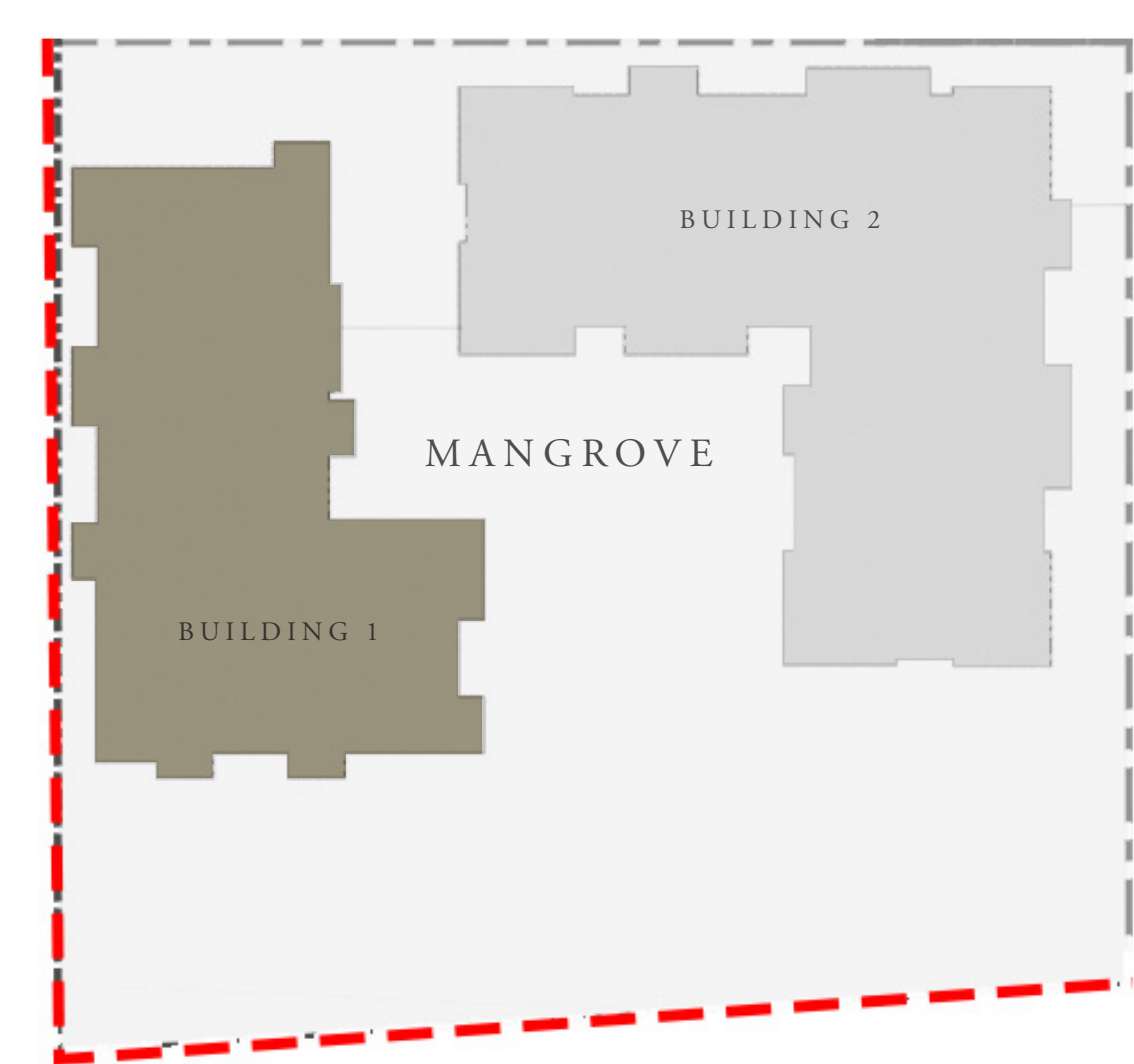
LEVEL 2-7

UNIT 07

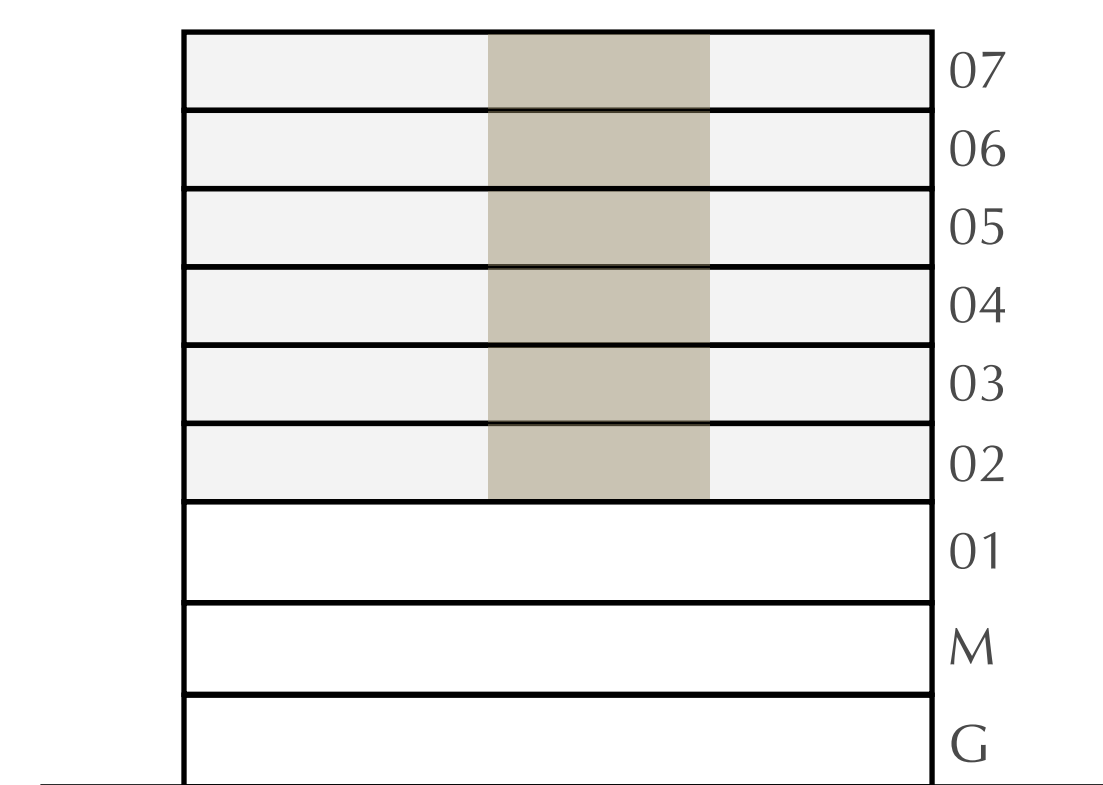
| | | |
|----------------|---------------|-------------|
| APARTMENT AREA | 632.60 SQ.FT. | 58.77 SQ.M. |
| BALCONY AREA | 63.40 SQ.FT. | 5.89 SQ.M. |
| TOTAL AREA | 696.00 SQ.FT. | 64.66 SQ.M. |

CANAL

PARK



KEY PLAN



FLOOR PLAN 1. All dimensions are in imperial and metric, and measured from finish to finish excluding construction tolerances. 2. All materials, dimensions, and drawings are approximate only. 3. Information is subject to change without notice, at developer's absolute discretion. 4. Actual area may vary from the stated area. 5. Drawings not to scale. 6. All images used are for illustrative purposes only and do not represent the actual size, features, specifications, fittings, and furnishings. 7. The developer reserves the right to make revisions / alterations, at its absolute discretion, without any liability whatsoever.